

### LIFE-SAFETY INFORMATION

<b>APPLICABLE CODES</b>		
NFPA 101 LIFE-SAFETY CODE 2015		
<b>OCCUPANCY TYPE(S) AND CHAPTER(S)</b>		
BUSINESS (CHAPTER 38)		
MULTIPLE, MIXED, OR SEPARATE OCCUPANCY (REFERENCE CHAPTER 6)		
N/A		
<b>OCCUPANT LOAD FACTOR</b> (REFERENCE TABLE 7.3.1.2)		
EXISTING BLDG	7,488 S.F.	100 GROSS S.F. / OCCUPANT 74 OCCUPANTS
ADDITION	6,948 S.F.	100 GROSS S.F. / OCCUPANT 69 OCCUPANTS
<b>CLASSIFICATION OF HAZARD OF CONTENTS</b>		
(REFERENCE: OCCUPANCY CHAPTER AND 6.2.2. SPECIFY LOW, ORDINARY, OR HIGH)		
<b>CONSTRUCTION TYPE(S)</b> (REFERENCE: CHAPTERS, TABLE A.8.2.1.2 AND COMMENTARY TABLE 6.1 IN HANDBOOK)		
EXISTING CONSTRUCTION = II (200); NEW CONSTRUCTION = III (200)		
<b>MINIMUM EXIT SEPARATION DISTANCE FOR REMOTELY LOCATED EXITS</b>		
(REFERENCE: SECTION 7.5; SPECIFY 1/2 OR 1/3 DIAGONAL DISTANCE OF AREA SERVED)		
1/2 DIAGONAL =	114.16ft / 2 = 57.08 ft	ACTUAL = 58.11 ft
<b>MAXIMUM DEAD-END CORRIDORS</b> (REFERENCE: OCCUPANCY CHAPTER AND TABLE A.7.6)		
NEW CONSTRUCTION =	20ft	EXISTING CONSTRUCTION = 50 FT
<b>MAXIMUM COMMON PATH OF TRAVEL DISTANCE</b> (REFERENCE: OCCUPANCY CHAPTER AND TABLE A.7.6)		
NEW CONSTRUCTION =	75 FT	EXISTING CONSTRUCTION = 75 FT
<b>MAXIMUM TRAVEL DISTANCE TO EXITS</b> (REFERENCE: OCCUPANCY CHAPTER AND TABLE A.7.6)		
NEW CONSTRUCTION =	200 FT	EXISTING CONSTRUCTION = 200 FT
<b>EXTINGUISHMENT REQUIREMENTS</b>		
NONE REQUIRED		
<b>DETECTION, ALARM, AND COMMUNICATION SYSTEMS</b>		
NONE REQUIRED		
<b>ALLOWABLE HEIGHT AND BUILDING AREA</b>		
PER IBC EQUIVALENT CONSTRUCTION TYPE		

### BUILDING CODE INFORMATION

<b>APPLICABLE CODES</b>		
IBC 2015		
<b>BUSINESS GROUP B</b> (IBC 2012 CHAPTER 13)		
<b>OCCUPANT LOAD CALCULATIONS</b> (TABLE 1004.1.1)		
EXISTING BLDG	7,488 S.F.	100 GROSS S.F. / OCCUPANT 74 OCCUPANTS
ADDITION	6,948 S.F.	100 GROSS S.F. / OCCUPANT 69 OCCUPANTS
<b>CONSTRUCTION TYPE(S)</b> (TABLE 504)		
EXISTING CONSTRUCTION = II; NEW CONSTRUCTION = III (SECTION 504)		
<b>ALLOWABLE HEIGHT AND BUILDING AREA LIMITED BY TYPE OF CONSTRUCTION</b>		
MAXIMUM ALLOWABLE HEIGHT (TABLE 504.3a)	NON-SPRINKLED	55 FT
MAXIMUM ALLOWABLE AREA IN SQUARE FEET (SECTION 503, 506 & 507, TABLE 503)	NON-SPRINKLED	19,000 S.F.
MAXIMUM AREA OF EXTERIOR WALL OPENINGS BASED ON FIRE SEPARATION DISTANCE AND DEGREE OF OPENING PROTECTION	NORTH FACE OF BUILDING IS 15 FROM PROPERTY LINE. IBC TABLE 105.8 ALLOW 15% OF SURFACE AREA TO HAVE UNPROTECTED OPENINGS.	SURFACE AREA IS 1018 S.F. X 15% = 152.7 S.F. UNPROTECTED OPENINGS
	WINDOWS = 12 S.F. X 4 = 48 S.F. UNPROTECTED OPENINGS	

### WIND SPEED DESIGN REQUIREMENTS

THIS BUILDING SHALL BE DESIGNED WITH IBC SEC 1609 AS A FULLY ENCLOSED BLDG USING THE FOLLOWING INFORMATION:

WIND DESIGN DATA:			
DETERMINATION OF WIND LOADS SHALL BE IN ACCORDANCE WITH IBC SEC 1609.3 (1), (2), OR (3) DEPENDING ON THE RISK CATEGORY			
WIND SPEED $V_{ult}$ (3 SECOND GUST) =	131 MPH (IBC FIG 1609.3(1))		
NOMINAL DESIGN WIND SPEED $V_{std}$ =	102 MPH ( $V_{ult} \times (0.6)^{1/2}$ )		
RISK CATEGORY:	CATEGORY II BLDG	SURFACE ROUGHNESS =	C
TOPOGRAPHIC FACTOR =	1	EXPOSURE =	C
INTERNAL PRESSURE COEFFICIENT (ASCE 7-10 TABLE 26.11-1):	+ 0.18		
COMPONENTS AND CLADDING	+19.7 PSF		-22.8 PSF
LIVE LOADS (IBC SEC 1607 & TABLE 1607.1)			
OFFICE LOBBIES & CORRIDORS 1ST FLOOR	100 PSF		
OFFICES	50 PSF		
ROOF LIVE LOADS	20 PSF UNIFORM, 300 LB CONCENTRATED		
SNOW LOADS (IBC SEC 1608):			
GROUND SNOW LOAD (IBC FIG 1608.2):	5 PSF		

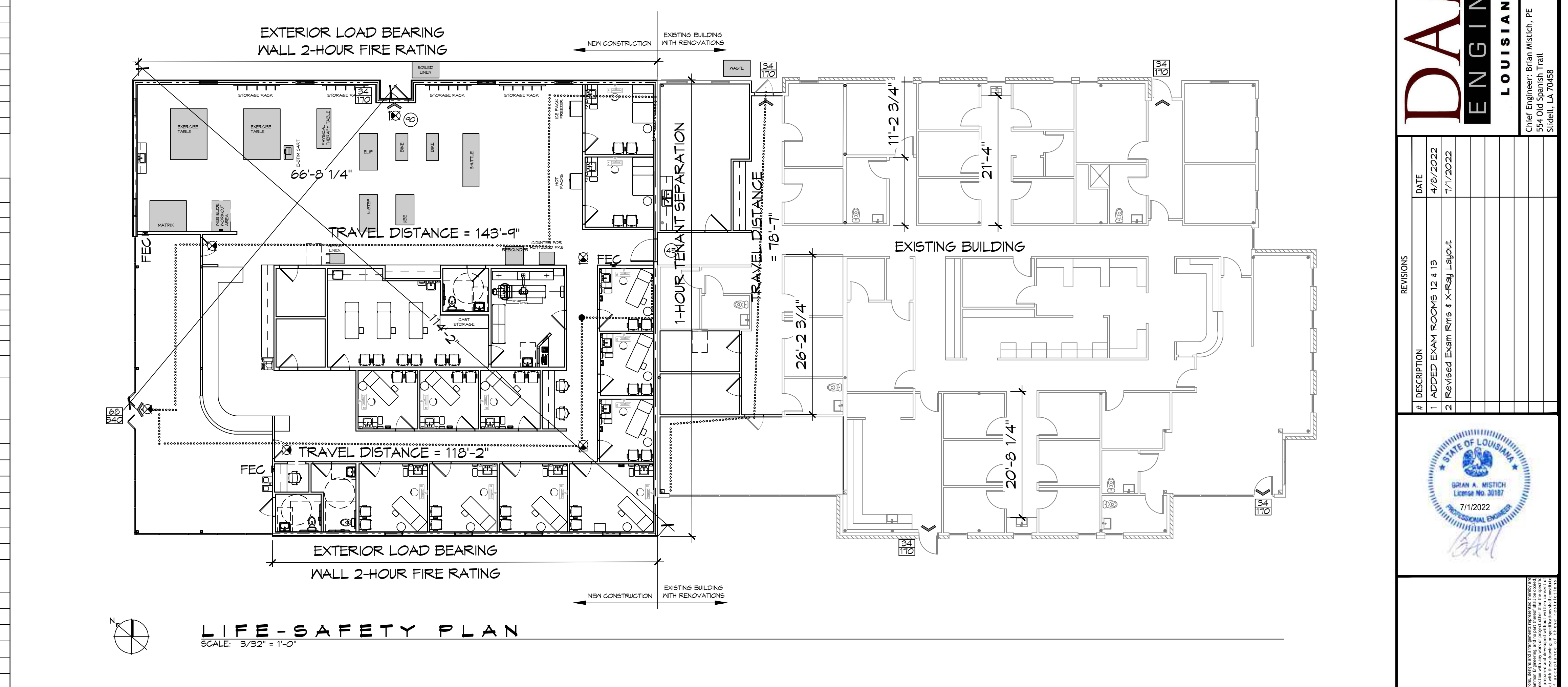
### FLOOD ZONE INFORMATION

22103G0305F EFF. 4/30/2008			
FLOOD ZONE:	X	BASE FLOOD ELEVATION	N/A

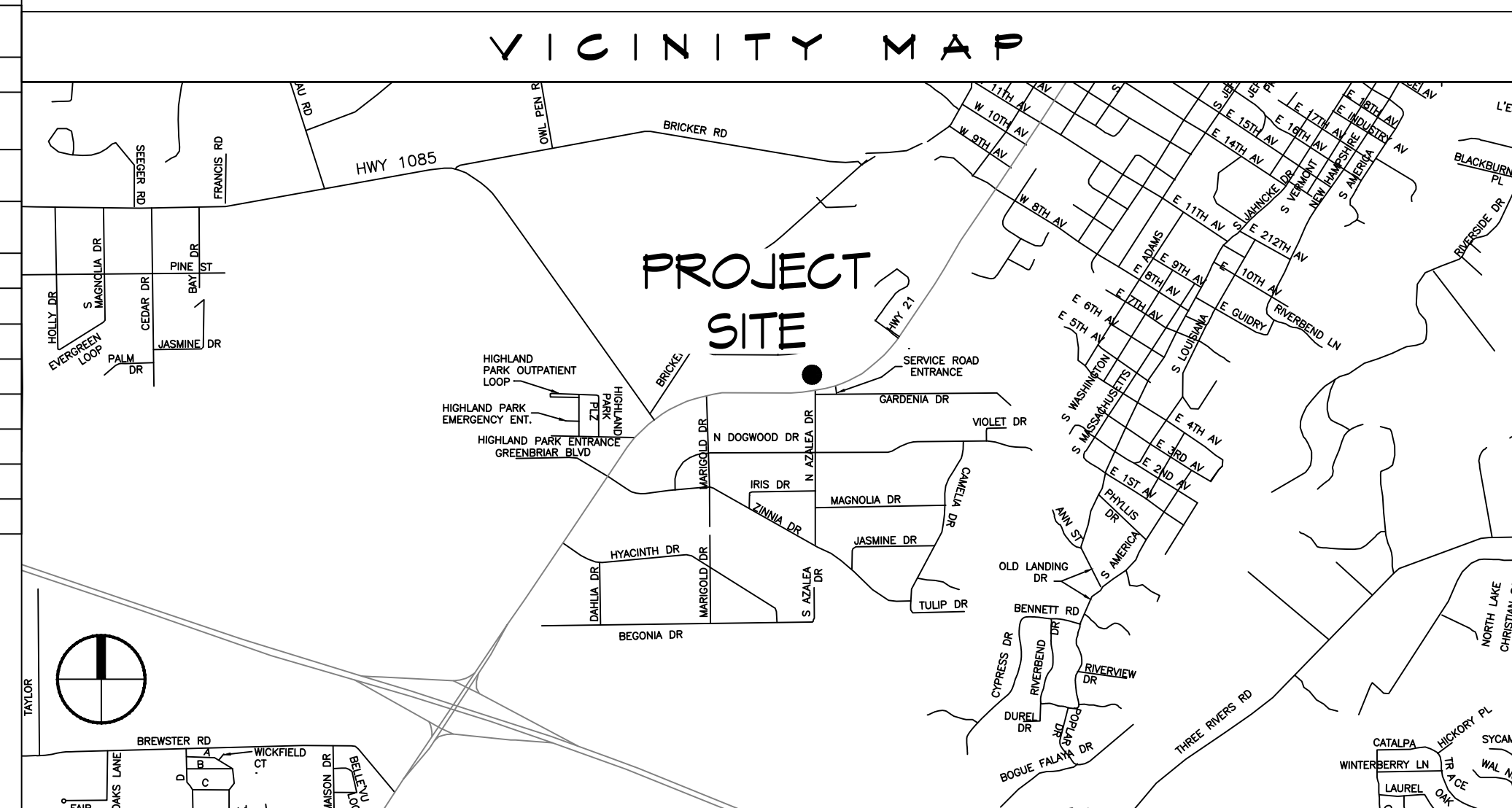
### LIFE-SAFETY LEGEND

SYMBOL	DESCRIPTION
	EXITS
	DOOR FIRE RATING (MINUTES)
	DOOR WIDTH/EGRESS CAPACITY
	EXIT LIGHT
	FIRE EXTINGUISHER AND CABINET
	FIRE EXTINGUISHER IV WALL MTD BRACKET
	COMMON PATH OF TRAVEL
	TRAVEL DISTANCE
	DECISION POINT
	TWO-HOUR FIRE RATED PARTITION
	ONE-HOUR FIRE RATED PARTITION

# NEW ADDITION DR. HONTAS MEDICAL OFFICE BUILDING



**LIFE-SAFETY PLAN**  
SCALE: 3/32" = 1'-0"



### SHEET INDEX

SHEET #	SHEET TITLE	REVISION / DATE
G101	GENERAL INFORMATION SHEET	REV - 7/1/2022
G102	ADA INFORMATION	REV #0 - 6/15/2022
C101	SITE PLAN	REV #1 - 6/30/2022
C102A	EXISTING SITE DRAINAGE PLAN	REV #0 - 6/30/2022
C102B	SITE GRADING AND POST DRAINAGE PLAN	REV #1 - 6/30/2022
C102C	DRAINAGE DETAILS	REV #0 - 6/30/2022
C103	PAVING PLAN	REV #1 - 7/1/2022
C104	SITE UTILITY PLAN	REV #0 - 6/30/2022
C105	SITE EROSION CONTROL PLAN	REV #1 - 7/1/2022
S101	FOUNDATION PLAN	REV #0 - 6/15/2022
S201	STRUCTURAL FRAMING PLAN	REV #0 - 6/15/2022
S202	FRAMING DETAILS	REV #0 - 6/15/2022
D101	DEMO PLAN	REV #0 - 6/15/2022
A101	RENOVATIONS AND NEW FLOOR PLAN	REV #2 - 7/1/2022
A102	EXTERIOR ELEVATIONS	REV #0 - 6/15/2022
A103	ROOF PLAN	REV #0 - 6/15/2022
A104	PARTITION TYPES & STOREFRONT GLASS	REV #0 - 6/15/2022
A105	REFLECTED CEILING PLAN	REV #1 - 7/1/2022
F101	PLUMBING PLAN AND RISER DIAGRAM	REV #2 - 7/1/2022
M101	MECHANICAL PLAN	REV #3 - 7/1/2022
E101	POWER PLAN AND PANEL SCHEDULE	REV #3 - 7/1/2022
E102	LIGHTING PLAN	REV #3 - 7/1/2022

### GENERAL NOTES

- ALL MATERIALS AND WORK, INCIDENTAL TO THE CONSTRUCTION OF THIS PROJECT, SHALL CONFORM TO ALL GOVERNING CODES, AND REGULATIONS OF AGENCIES IN AUTHORITY.
- CONTRACTOR SHALL PROVIDE ALL PUBLIC PROTECTIONS NECESSARY AS REQUIRED BY LAW.
- THE DRAWINGS, SPECIFICATIONS AND ANY SUBSEQUENTLY ISSUED ADDENDA, AMENDMENTS OR SUCH CHANGE ORDERS APPROVED BY THE OWNER AND THE CONTRACTOR ARE PART OF THESE CONTRACT DOCUMENTS.
- CONTRACTOR SHALL WARRANT ALL WORK FOR ONE (1) YEAR FROM THE DATE OF SUBSTANTIAL COMPLETION UNLESS SPECIFICALLY DIRECTED IN OTHER DRAWINGS, SPECIFICATIONS OR SUBSEQUENTLY ISSUED ADDENDA OR AMENDMENTS.
- DO NOT SCALE DRAWINGS.** CONSULT WITH THE ARCHITECT REGARDING ANY ITEMS IN THE CONTRACT DOCUMENTS THAT REQUIRE CLARIFICATION.
- TRASH SHALL BE REMOVED FROM THE SITE NOT LESS THAN TWICE MONTHLY.
- THE GENERAL CONTRACTOR SHALL VERIFY EXISTING CONDITIONS PRIOR TO COMMENCING WORK AND REPORT ANY AND ALL DISCREPANCIES TO THE ARCHITECT.
- CONTRACTOR VEHICLES AND EQUIPMENT NECESSARY FOR CONSTRUCTION MAY BE PARKED ON THE SITE. OTHER VEHICLES PARKED ON THE SITE REQUIRE THE OWNER'S PERMISSION.
- NAMING A CERTAIN BRAND, MAKE OR MANUFACTURER IS TO DESIGNATE THE GENERAL STYLE, TYPE, CHARACTER AND QUALITY STANDARD OF THE PRODUCT DESIRED. SUBSTITUTION REQUESTS MUST BE SUBMITTED PRIOR TO BIDDING.
- ALL MATERIALS/EQUIPMENT SHALL BE INSTALLED PER MANUFACTURER'S RECOMMENDATIONS. WORK NOT CONSISTENT WITH MANUFACTURER'S RECOMMENDATIONS WILL BE REJECTED BY OWNER/ARCHITECT.

## DAMMON ENGINEERING, INC.

LOUISIANA & MISSISSIPPI

Civil Engineer: Brian Mitchell, PE  
554 Old Spanish Trail  
Slidell, LA 70458  
www.dammonengineering.com  
info@dammonengineering.com  
PH: 985.649.5832

REVISIONS	DATE
1	4/8/2022
2	7/1/2022



## HONTAS MOOB

NEW ADDITION

1211 LA HWY 21  
COVINGTON, LA 70438

JOB No: 2443 DATE: 6-15-2022  
DRAWN BY: DDPD CHECKED BY: GKD

SHEET TITLE:  
GENERAL INFORMATION SHEET

DRAWING NUMBER:  
**G101**

SHEET No: 1 of 22