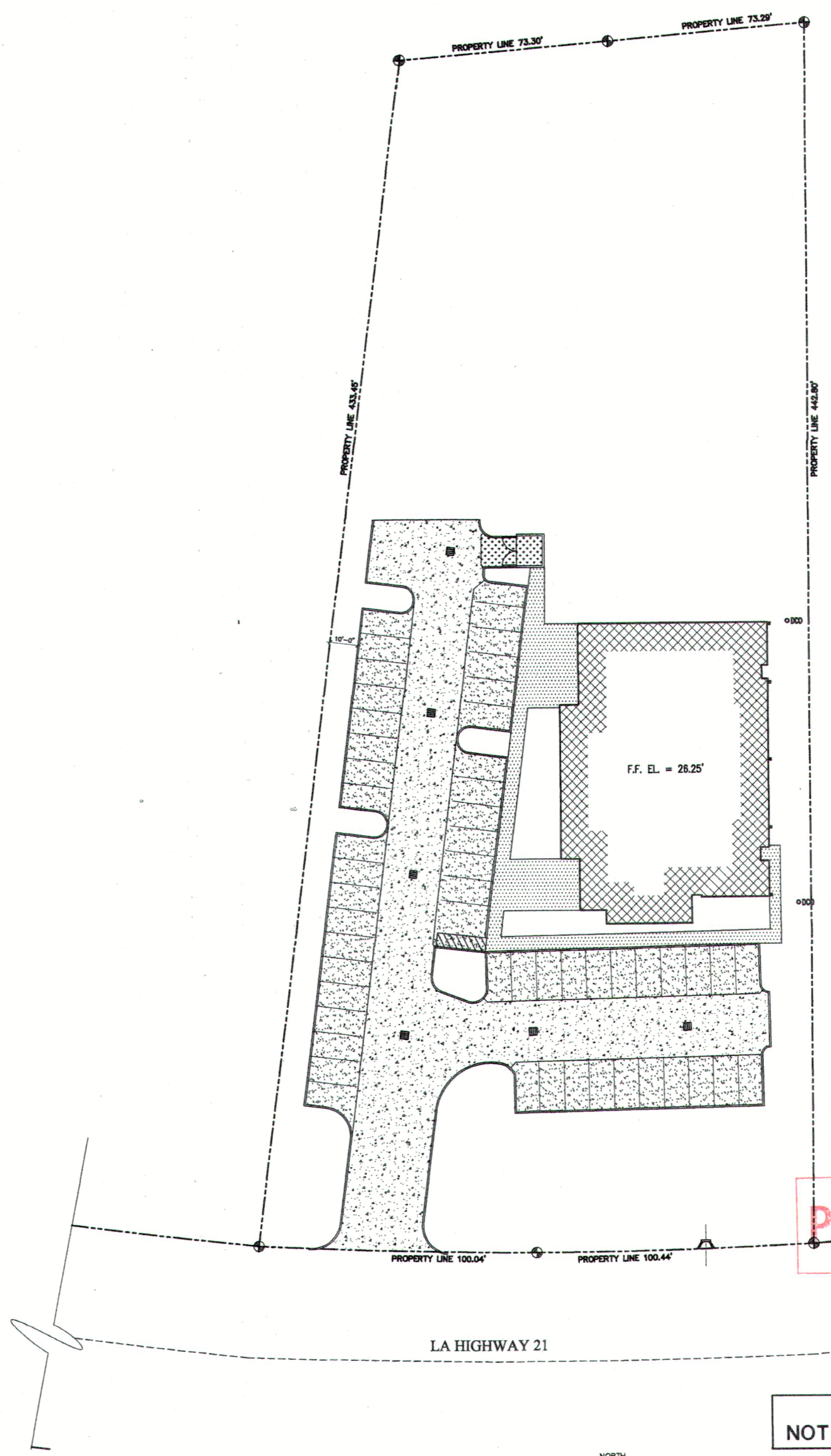


S:\Projects\Comp\2001\12\409 Tulane-hontas\Consultant\Drawing\MM\CV\112-18-2002\01\04\0104.dwg, 12/18/2002 05:05:01 PM, armano



**PAVEMENT LEGEND**

	PORTLAND CEMENT CONCRETE ROADWAY AND CURB SEE 3/02.01
	PORTLAND CEMENT CONCRETE PARKING AREA SEE 3/02.01
	PORTLAND CEMENT CONCRETE COMPACTOR PAD SEE 3/02.01
	PORTLAND CEMENT CONCRETE SIDEWALK SEE 4/02.01

RECEIVED  
DEC 18 2002  
GARCIA BRENNER STROMBERG

**PROGRESS SET**

PROGRESS  
NOT FOR CONSTRUCTION  
**BID SET**

1 PAVING PLAN  
C1.04 1"=20'-0"



MORPHY  
MAKOFSKY  
INCORPORATED  
(504)488-1317  
JOB NO. 02104

NO.	REVISIONS
1	
2	
3	
4	
5	
6	
7	
8	
9	
10	
11	
12	

A. PRINCE, LDB  
SATNOH, LLC  
130 W. RUEILLE  
MANDEVILLE, LA 70471

STATE REG : AA - 0001650

GARCIA BRENNER STROMBERG  
A R C H I T E C T U R E  
Jorge R. Garcia, P.E., AIA, LEED AP  
Stuart M. Brenner, P.E., LEED AP  
Francis J. Stromberg, P.E., LEED AP  
1001 St. Mandéville, Metairie, LA 70006  
Tel: 504.885.1317 Fax: 504.885.1318  
www.gbstr.com

SCALE

PAVING PLAN  
TULANE / HONTAS  
MEDICAL CENTER

PROJECT NO. 21409

SHEET NO. C-1.04

DATE

DEC 23 2002