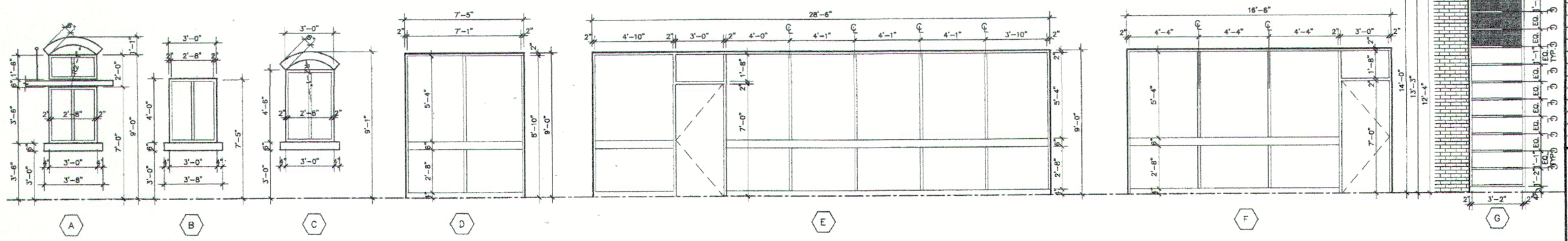


WINDOW SCHEDULE

(S/N)	NOMINAL SIZE	WINDOW TYPE	MASONRY OPENING (USING PRECAST SILLS)	FRAME	GLAZING	REMARKS
A	WIDTH	HEIGHT	WIDTH	HEIGHT		
A	3'-0"	3'-6"	FIXED GL	ALUM.	IMPACT	SEE A1 FOR FIXED WINDOW ABOVE.
B	3'-0"	4'-0"	FIXED GL	ALUM.	IMPACT	
C	3'-0"	4'-0"	FIXED GL	ALUM.	IMPACT	
D	7'-5"	9'-0"	FIXED GL	ALUM.	STORE FRONT	IMPACT RESISTANCE
E	28'-6"	9'-0"	FIXED GL	ALUM.	STORE FRONT	IMPACT RESISTANCE
F	16'-6"	9'-0"	FIXED GL	ALUM.	STORE FRONT	IMPACT RESISTANCE
G	3'-6"	12'-6"	FIXED GL	ALUM.	STORE FRONT	IMPACT RESISTANCE
A1	3'-0"	1'-6"	FIXED GL	ALUM.	IMPACT	

NOTES:

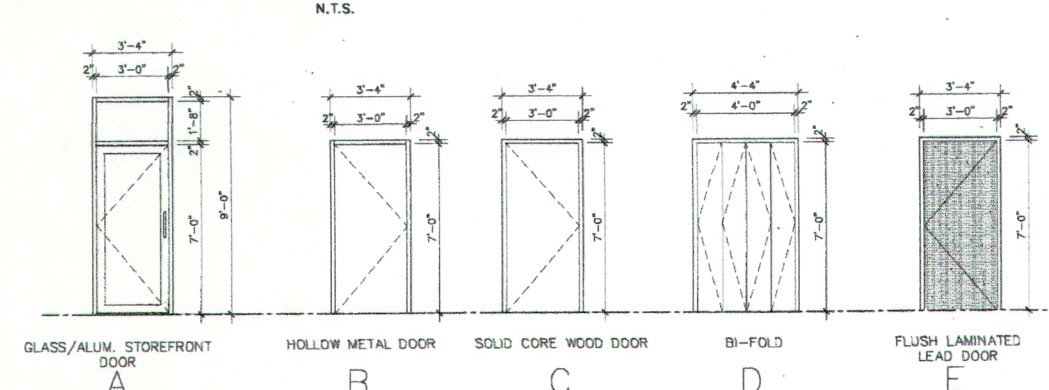
- ALL UNITS BY CGI SERIES TO HAVE MIAMI / DADE COUNTY PRODUCT APPROVAL (OR ARCHITECT APPROVED EQUAL). ALL UNITS IMPACT RESISTANT, UNLESS OTHERWISE NOTED.
- ALL DIMENSIONS ARE NOMINAL (MASONRY OR ROUGH OPENING) DIMENSIONS. SHOP DWGS TO BE PROVIDED FOR ALL UNITS ALONG WITH FIELD DIMENSIONS.
- SHADING COEFFICIENT OF GLAZING TO BE 0.81 WITH 0.91 "U" FACTOR.



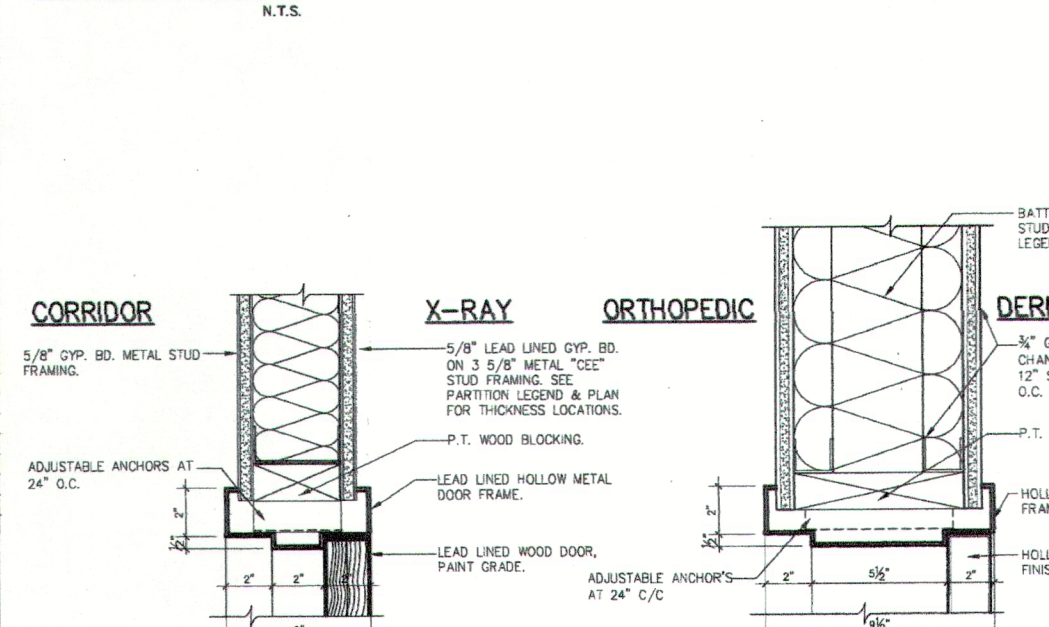
DOOR SCHEDULE

DR. NO.	DR. TYPE	DOOR MATERIAL	WIDTH	HEIGHT	THK.	M.G.	FIRE LABEL	FRAME	THRESHOLD DET.	HARDWARE SET	REMARKS	
101.A	A	GLASS/ALUM	3'-0"	7'-0"	1 3/4"			MTL		1	IMPACT RESISTANCE GLAZING	
101.B	C	S.C. WOOD	3'-0"	7'-0"	1 3/4"			MTL	10/A-10.02	4		
102	C	S.C. WOOD	3'-0"	7'-0"	1 3/4"			MTL	7/A-10.02	3		
103	C	S.C. WOOD	3'-0"	7'-0"	1 3/4"			MTL	8/A-10.02	10		
104	C	S.C. WOOD	3'-0"	7'-0"	1 3/4"			MTL	9/A-10.02	2		
105	C	S.C. WOOD	3'-0"	7'-0"	1 3/4"			MTL	8/A-10.02	9		
107	C	S.C. WOOD	3'-0"	7'-0"	1 3/4"			MTL	8/A-10.02	9		
108	C	S.C. WOOD	3'-0"	7'-0"	1 3/4"			MTL	9/A-10.02	2		
109	C	S.C. WOOD	3'-0"	7'-0"	1 3/4"			MTL	8/A-10.02	2		
110	C	S.C. WOOD	3'-0"	7'-0"	1 3/4"			MTL	8/A-10.02	2		
111	C	S.C. WOOD	3'-0"	7'-0"	1 3/4"			MTL	8/A-10.02	2		
112	C	S.C. WOOD	3'-0"	7'-0"	1 3/4"			MTL	8/A-10.02	2		
113.A	C	S.C. WOOD	3'-0"	7'-0"	1 3/4"			MTL	8/A-10.02	3		
113.B	B	H.M.	3'-0"	7'-0"	1 3/4"			C	MTL	11/A-10.02	11	
114	C	S.C. WOOD	3'-0"	7'-0"	1 3/4"			MTL	8/A-10.02	3		
115.A	C	S.C. WOOD	3'-0"	7'-0"	1 3/4"			MTL	10/A-10.02	3		
115.B	C	S.C. WOOD	3'-0"	7'-0"	1 3/4"			C	MTL	10/A-10.02	3	
116	C	S.C. WOOD	3'-0"	7'-0"	1 3/4"			MTL	8/A-10.02	2		
117	C	S.C. WOOD	3'-0"	7'-0"	1 3/4"			MTL	8/A-10.02	2		
118	C	S.C. WOOD	3'-0"	7'-0"	1 3/4"			MTL	8/A-10.02	2		
120	D	BI-FOLD	(PR) 2'-0"	7'-0"	1 3/4"			MTL		8		
121	C	S.C. WOOD	3'-0"	7'-0"	1 3/4"			MTL	8/A-10.02	2		
122	C	S.C. WOOD	3'-0"	7'-0"	1 3/4"			MTL	8/A-10.02	10		
123	C	S.C. WOOD	3'-0"	7'-0"	1 3/4"			MTL	8/A-10.02	2		
125	C	S.C. WOOD	3'-0"	7'-0"	1 3/4"			MTL	8/A-10.02	10		
126	C	S.C. WOOD	3'-0"	7'-0"	1 3/4"			MTL	9/A-10.02	2		
127	C	S.C. WOOD	3'-0"	7'-0"	1 3/4"			MTL	7/A-10.02	9		
128.A	C	S.C. WOOD	3'-0"	7'-0"	1 3/4"			MTL	7/A-10.02	4		
128.B	B	H.M.	3'-0"	7'-0"	1 3/4"			C	MTL	11/A-10.02	11	
129	C	S.C. WOOD	3'-0"	7'-0"	1 3/4"			MTL	7/A-10.02	9		
130	C	S.C. WOOD	3'-0"	7'-0"	1 3/4"			MTL	7/A-10.02	9		
131.A	C	S.C. WOOD	3'-0"	7'-0"	1 3/4"			MTL	7/A-10.02	4		
131.B	C	S.C. WOOD	3'-0"	7'-0"	1 3/4"			MTL	7/A-10.02	4		
131.C	A	GLASS/ALUM	3'-0"	7'-0"	1 3/4"			MTL		1	IMPACT RESISTANCE GLAZING	
134	C	S.C. WOOD	3'-0"	7'-0"	1 3/4"			MTL	7/A-10.02	9		
135	C	S.C. WOOD	3'-0"	7'-0"	1 3/4"			MTL	9/A-10.02	2		
136	C	S.C. WOOD	3'-0"	7'-0"	1 3/4"			MTL	9/A-10.02	2		
137	C	S.C. WOOD	3'-0"	7'-0"	1 3/4"			MTL	8/A-10.02	2		
138	C	S.C. WOOD	2'-0"	7'-0"	1 3/4"			MTL	8/A-10.02	5		
140	C	S.C. WOOD	3'-0"	7'-0"	1 3/4"			MTL	8/A-10.02	2		
141.A	C	S.C. WOOD	3'-0"	7'-0"	1 3/4"			MTL	7/A-10.02	4		
141.B	C	S.C. WOOD	3'-0"	7'-0"	1 3/4"			MTL	7/A-10.02	9		
142	C	S.C. WOOD	3'-0"	7'-0"	1 3/4"			MTL	8/A-10.02	2		
143	C	S.C. WOOD	3'-0"	7'-0"	1 3/4"			MTL	8/A-10.02	2		
144	C	S.C. WOOD	3'-0"	7'-0"	1 3/4"			MTL	8/A-10.02	2		
147	E	S.C. WOOD	3'-0"	7'-0"	1 3/4"			MTL	7/A-10.02	3	LEAD LINED DOOR	
148	C	S.C. WOOD	3'-0"	7'-0"	1 3/4"			MTL	9/A-10.02	2		
149	E	S.C. WOOD	3'-0"	7'-0"	1 3/4"			MTL	7/A-10.02	3	LEAD LINED DOOR	
150	E	S.C. WOOD	3'-0"	7'-0"	1 3/4"			MTL	7/A-10.02	2	LEAD LINED DOOR	
151	F	S.C. WOOD	(PR) 3'-0"	7'-0"	1 3/4"			MTL		8	SLIDING DOORS	
152.A	C	S.C. WOOD	3'-0"	7'-0"	1 3/4"			MTL	7/A-10.02	2		
152.B	B	H.M.	3'-0"	7'-0"	1 3/4"			C	MTL	11/A-10.02	11	

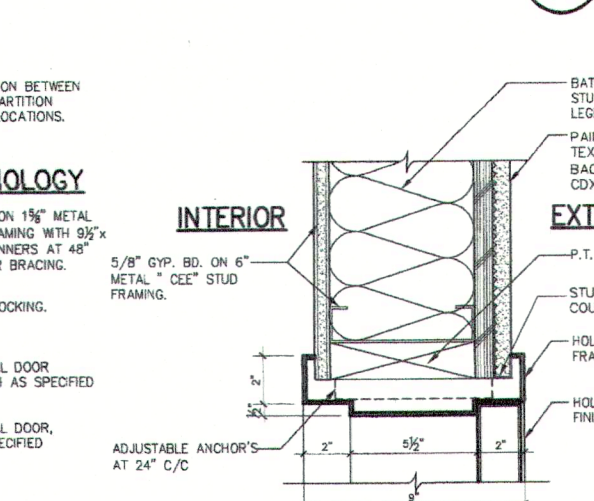
WINDOWS TYPES



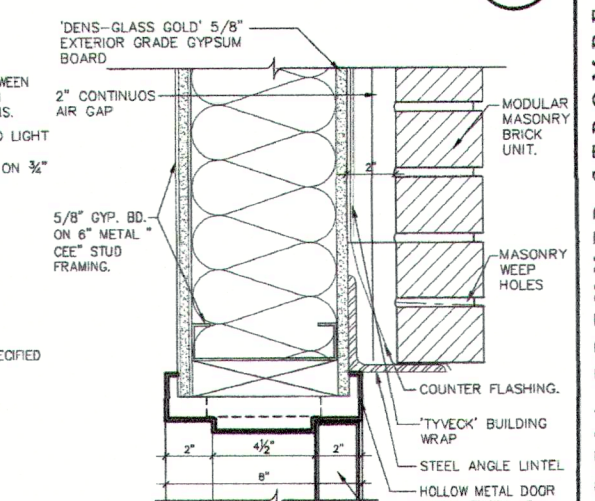
DOOR TYPES



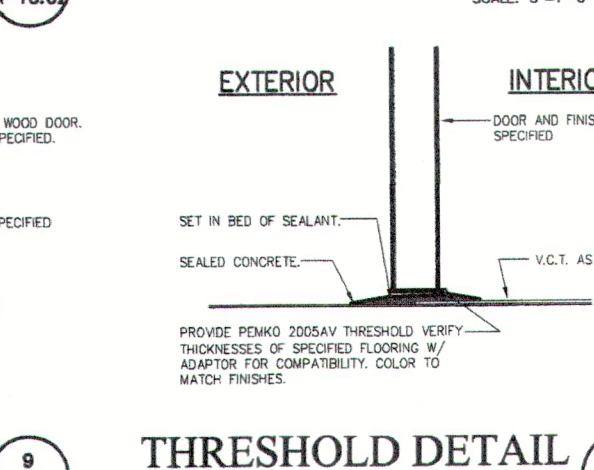
HEAD/JAMB DETAIL 1



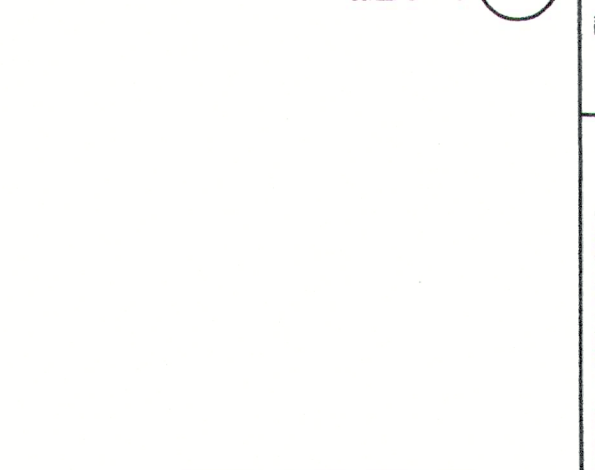
HEAD/JAMB DETAIL 2



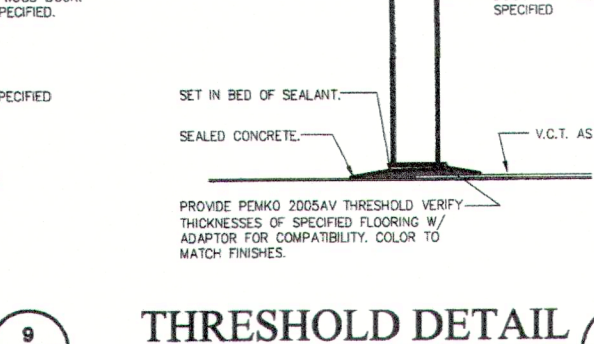
HEAD/JAMB DETAIL 3



HEAD/JAMB DETAIL 4



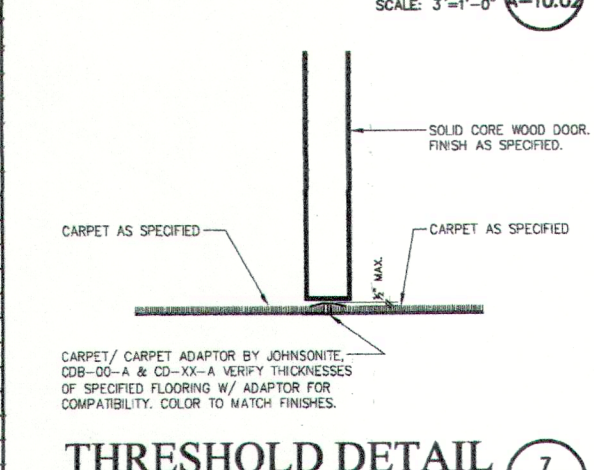
HEAD/JAMB DETAIL 5



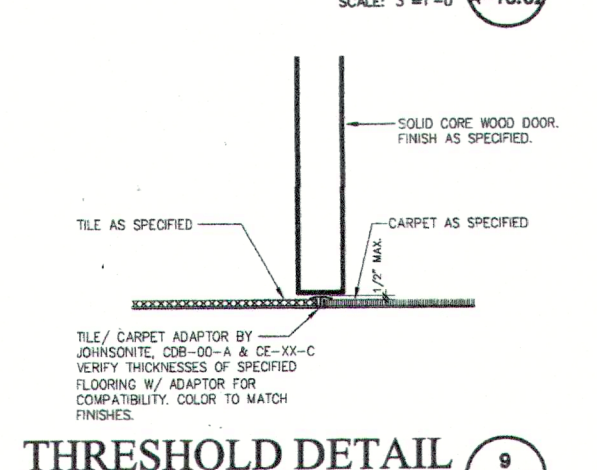
HEAD/JAMB DETAIL 6



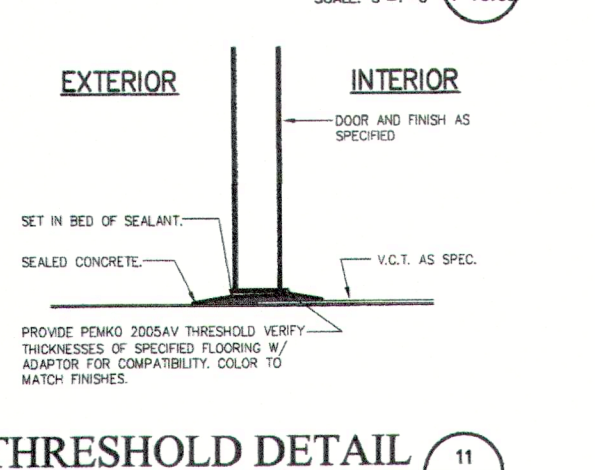
THRESHOLD DETAIL 7



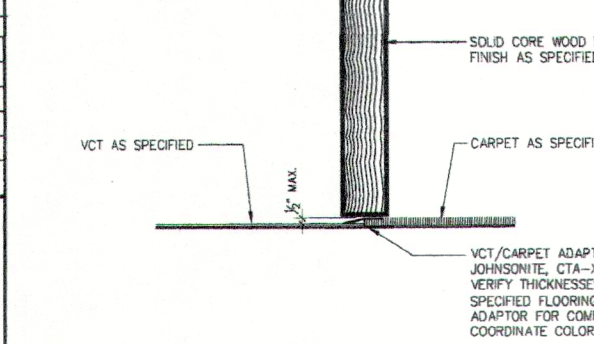
THRESHOLD DETAIL 9



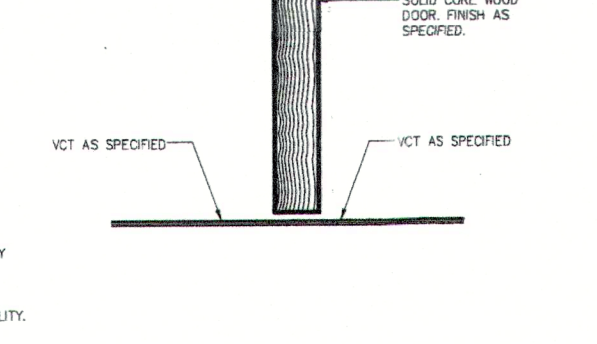
THRESHOLD DETAIL 11



THRESHOLD DETAIL 8



THRESHOLD DETAIL 10



HARDWARE SCHEDULE

HARDWARE TYPE	DESCRIPTION	MANUFACTURER	HARDWARE TYPE	DESCRIPTION	MANUFACTURER
HARDWARE NO. 1			HARDWARE NO. 9		
3 HINGES EA.	BB1191 4.5 X 4.5 NRP	HAGER	3 HINGES EA.	BB1191 4.5 X 4.5 (625)	HAGER
EXIT DEVICE / HANDLE	BY MANUFACTURER		LOCKSET	AL50PD-NEPTUNE-625	SCHLAGE
CYLINDER	20-2022-626	SCHLAGE	WALL STOP	409 US 32P	ROCKWOOD
DOOR CLOSER	P1461 C4SH TB ALUM	LCN	DOOR CLOSER	P1461 TB ALUM	LCN
THRESHOLD	2005AV-(2) 36" PAIR	PEMCO (ADA COMPLIANCE)			
SEAL	PK55D	PEMCO	HARDWARE NO. 10		
DOOR SHOE	211 AV	PEMCO	3 HINGES EA.	BB1191 4.5 X 4.5 (625)	HAGER
HARDWARE NO. 2			LOCKSET	AL80PD-NEPTUNE-625	SCHLAGE
3 HINGES EA.	BB1191 4.5 X 4.5 625	HAGER	WALL STOP	409 US 32D	ROCKWOOD
LOCK SET (PRIVACY)	AL405 NEPTUNE	SCHLAGE	DOOR CLOSER	P1461 TB ALUM	LCN
DOOR CLOSER	1461 TB ALUM	LCN			
HARDWARE NO. 3			HARDWARE NO. 11		
3 HINGES EA.	BB1191 4.5 X 4.5 625	SUBMIT FOR APPROVAL	3 HINGES EA.	BB1191 4.5 X 4.5 NRP	HAGER
LOCKSET	PUSH PLATES ON BOTH SIDES (626)		EXIT DEVICE	22NL-F-230 NLSPP28	SCHLAGE
KICK PLATES	BOTH SIDES (626)	SUBMIT FOR APPROVAL	DOOR CLOSER	P1461-CUSH TB ALUM	LCN
DOOR CLOSER	P1461 C4SH TB ALUM	LCN	SEAL	PK55D	PEMCO
WALL STOP	409 US32D	ROCKWOOD			
HARDWARE NO. 4					
3 HINGES EA.	BB1191 4.5 X 4.5 625	HAGER			
LOCKSET (PASSAGE)	AL105-NEPTUNE-625	SCHLAGE			
DOOR CLOSER	P1461 TB ALUM	LCN			
WALL STOP	481	ROCKWOOD			
HARDWARE NO. 5					
3 HINGES EA.	BB1191 4.5 X 4.5 NRP	HAGER			
LOCKSET	AL80PD-NEPTUNE-626	HAGER			
DOOR CLOSER	P1461 TB ALUM	LCN			
DOOR STOP	481	ROCKWOOD			
DOOR HOLDER / KICK DOOR					
HARDWARE NO. 6	ALL HARDWARE BY MANUFACTURER. SUBMIT FOR APPROVAL.				

- ALL HARDWARE TO COMPLY WITH STATE AND LOCAL CODES AND REQUIREMENTS, AND FLORIDA ACCESSIBILITY. (ADA)
- GENERAL CONTRACTOR TO PROVIDE 5 SETS MINIMUM PRODUCT SUBMITTALS AND ONE SAMPLE OF EACH HARDWARE SELECTED FOR CLIENT APPROVED PRIOR TO ORDERING.
- FINAL FINISH SELECTION BY ARCHITECT.
- ANY SUBSTITUTION OR VALUE ENGINEERING MUST BE STATED AND IDENTIFIED WITH SUBMITTALS.
- HARDWARE SUPPLIER TO REVIEW PLANS AND SCHEDULE AND PROVIDE ANY ITEM REQUIRED TO COMPLETE THE SET; VERIFY ALL QUANTITIES AND DOOR SWINGS.
- ALL DOORS WITHOUT SEALS SHALL HAVE MUTES.
- HARDWARE MANUFACTURE TO PROVIDE EMBOSING TO IDENTIFY KEYS AT NO ADDITIONAL COST TO OWNER.

PROGRESS SET

SATNOH, LLC
180 W. RUELLÉ
MANDEVILLE, LA 70471

GARCIA BRENNER STROMBERG
ARCHITECTS
171 Park of Commerce Drive, Suite 118
Burr Ridge, Illinois 60521
Tel: 561-231-0756 Fax: 561-341-0248

WINDOW, DOOR TYPES AND DETAILS
TULANE / HONTAS
MEDICAL CENTER

A-10.02