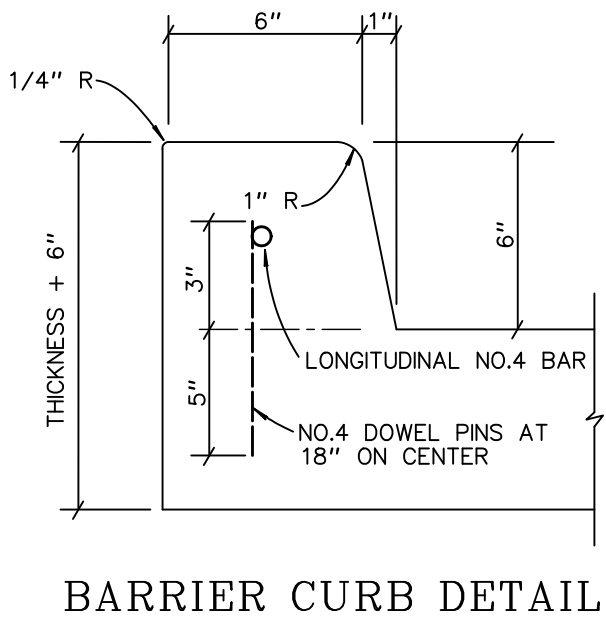
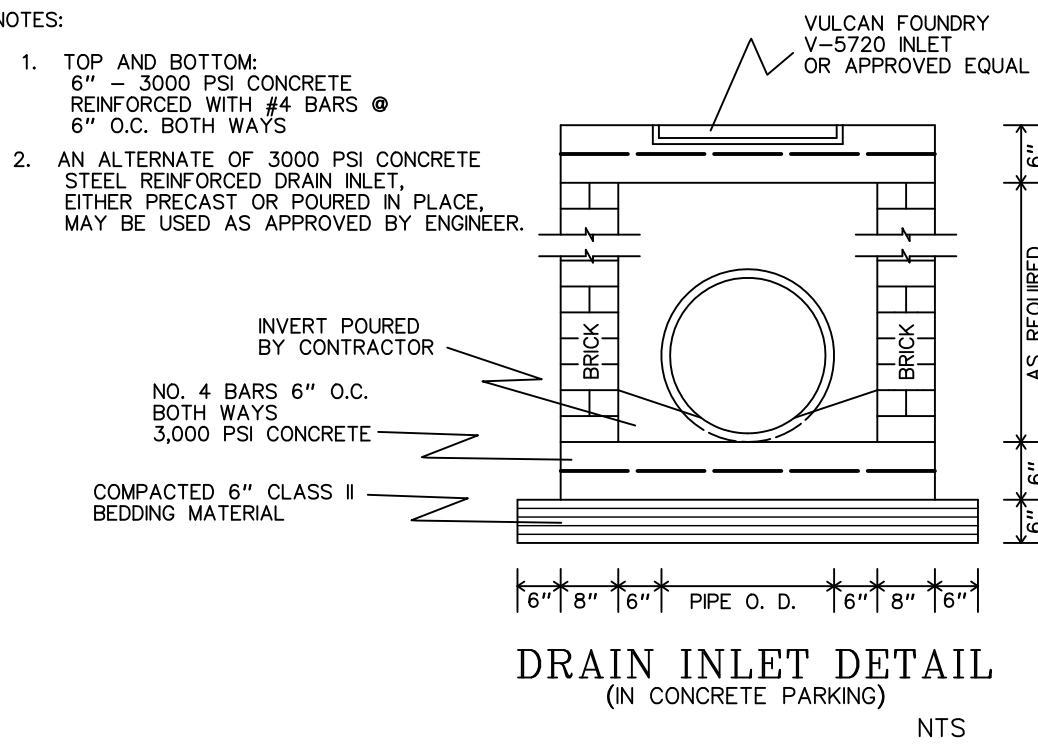
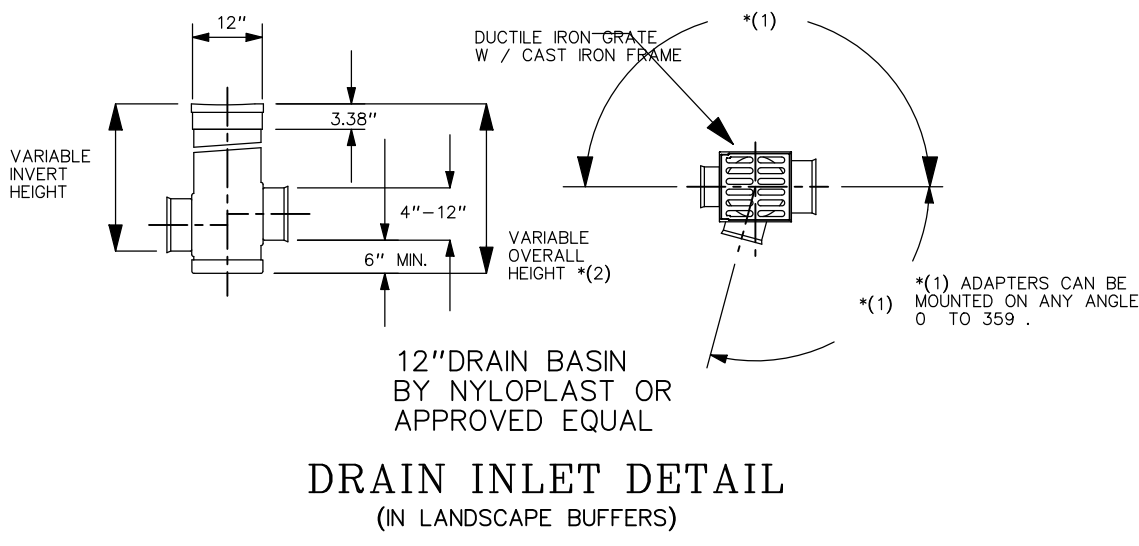


TIMBER BRANCH SUBD.

LOT 12

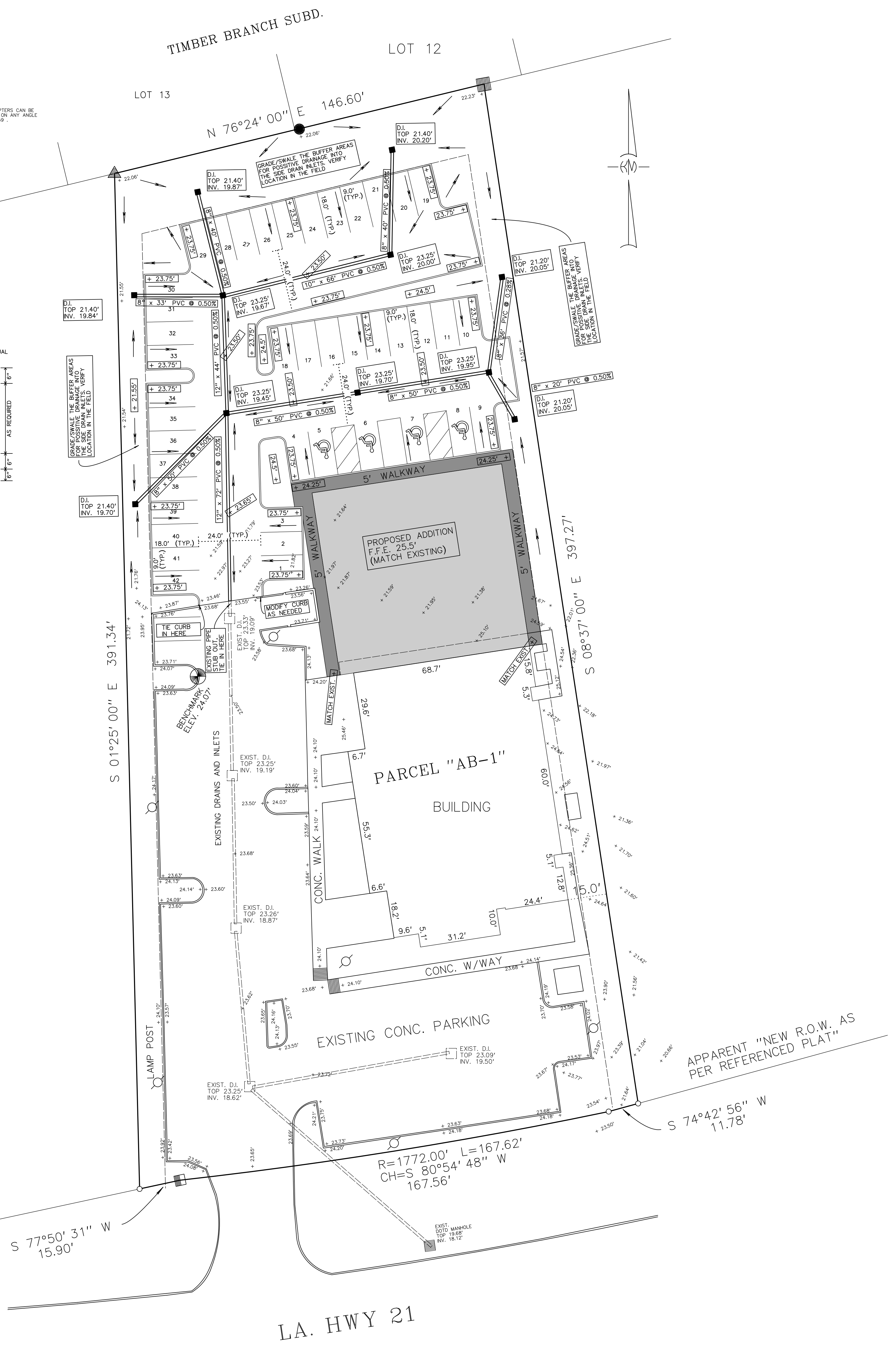
LOT 13



NOTES:

- TOP AND BOTTOM: 6" - 3000 PSI CONCRETE REINFORCED WITH #4 BARS @ 8" O.C. BOTH WAYS
- AN ALTERNATE OF 3000 PSI CONCRETE STEEL REINFORCED DRAIN INLET, EITHER PRECAST OR POURED IN PLACE, MAY BE USED AS APPROVED BY ENGINEER.

- LEGEND:
- ⊙ = BENCHMARK "X" CUT ON CONCRETE CURB, ELEV. = 24.07' REFERENCED TO MSL NAVD 88 (GEOID 18)
  - + 23.65' = EXISTING SPOT ELEVATION
  - \*\*\*\* = PROPOSED ELEVATIONS AND DATA
  - = PROPOSED DRAINAGE PATTERN



PAVING AND DRAINAGE PLAN

PARCEL "AB-1" SECTION 46, T-7-S, R-11-E, GREENSBURG LAND DISTRICT, ST. TAMMANY PARISH, LA.

REVISIONS	DATE
MARK	DATE

**KELLY J. McHUGH & ASSOC., INC.**  
 CIVIL ENGINEERS & LAND SURVEYORS  
 845 GALVEZ ST. - MANDEVILLE, LA.  
 626-5611

SCALE: 1" = 20' DATE: 08-03-21  
 DRAWN: DRJ JOB NO.: 02-208  
 CHECKED: KJM DWG. NO.: 02-208-PD 2021

PRELIMINARY DRAFT

KELLY McHUGH  
 License No. 18840  
 PROFESSIONAL ENGINEER  
 STATE OF LOUISIANA

08-03-21