

These documents have been prepared for the CHRISTWOOD RETIREMENT CENTER project. They are NOT suitable for use on other projects or in other locations without the express written approval and participation of RDC Schutte Wiscam Birge, Inc. Reproduction is prohibited.

© RDC Schutte Wiscam Birge

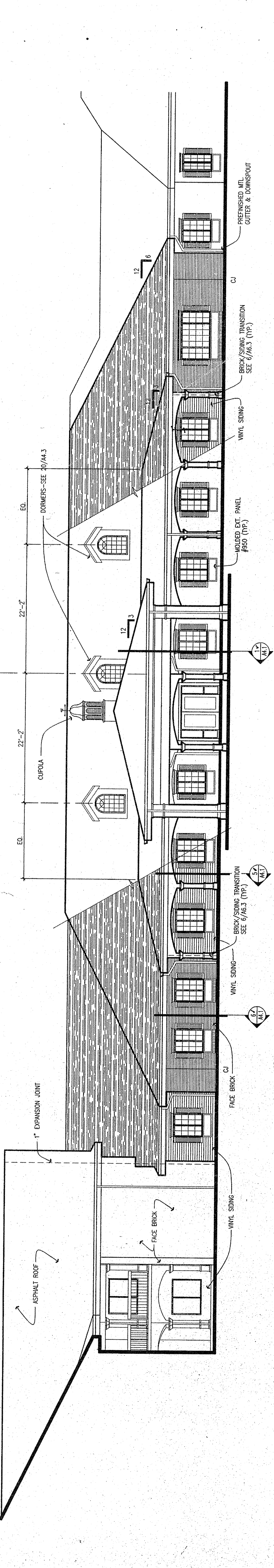


RDC Schutte Wiscam Birge
 ARCHITECTURE
 808 INDIAN HILLS DRIVE SUITE 700 OMAHA, NEBRASKA 68134 402-922-0733 FAX 402-922-0413
 PLANNING

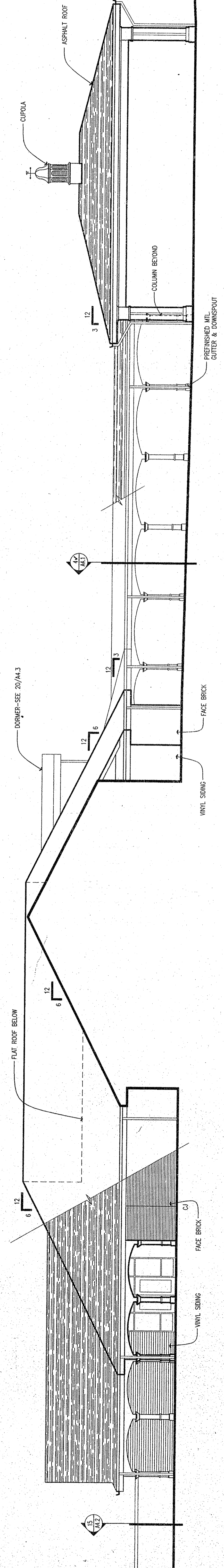
CHRISTWOOD
 A CONTINUING CARE RETIREMENT FACILITY
 LOUISIANA
 COVINGTON

DATE: 25/NOV/2014
 PROJECT #: 950-000
 FILE: 215

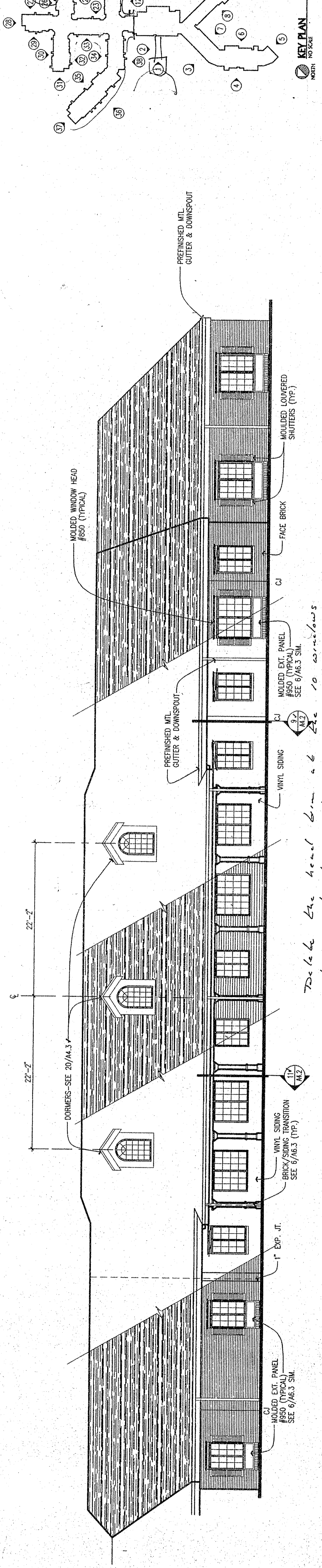
A3.1



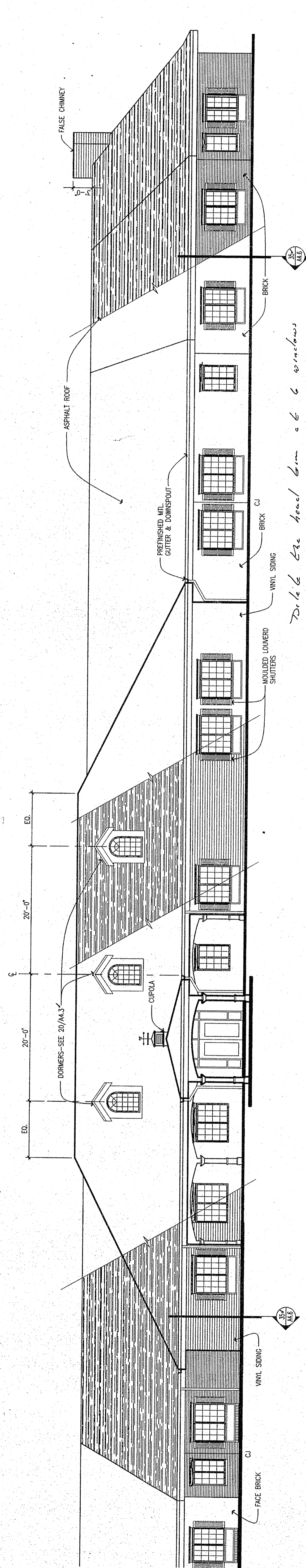
1- 1/8" = 1'-0"
 1st LIVING UNIT COMMONS ELEV.



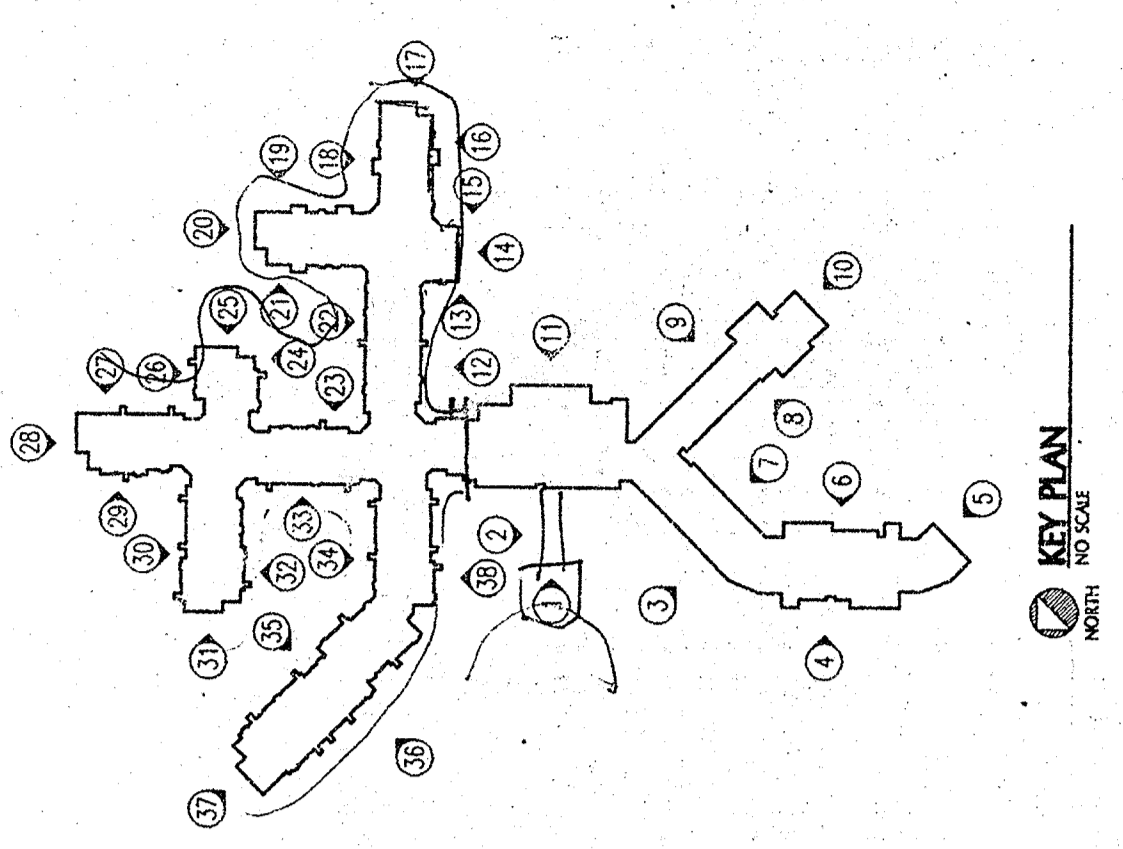
2- 1/8" = 1'-0"
 1st LIVING UNIT SIDE COMMONS ELEV.



3- 1/8" = 1'-0"
 ALL LIVING UNIT ELEV.



4- 1/8" = 1'-0"
 ALL LIVING UNIT FRONT COMMONS ELEV.



Do not take the head beam as 6 windows shown without sill panel - Add 1"

Do not take the head beam as 6 windows shown without sill panel - Add 1"