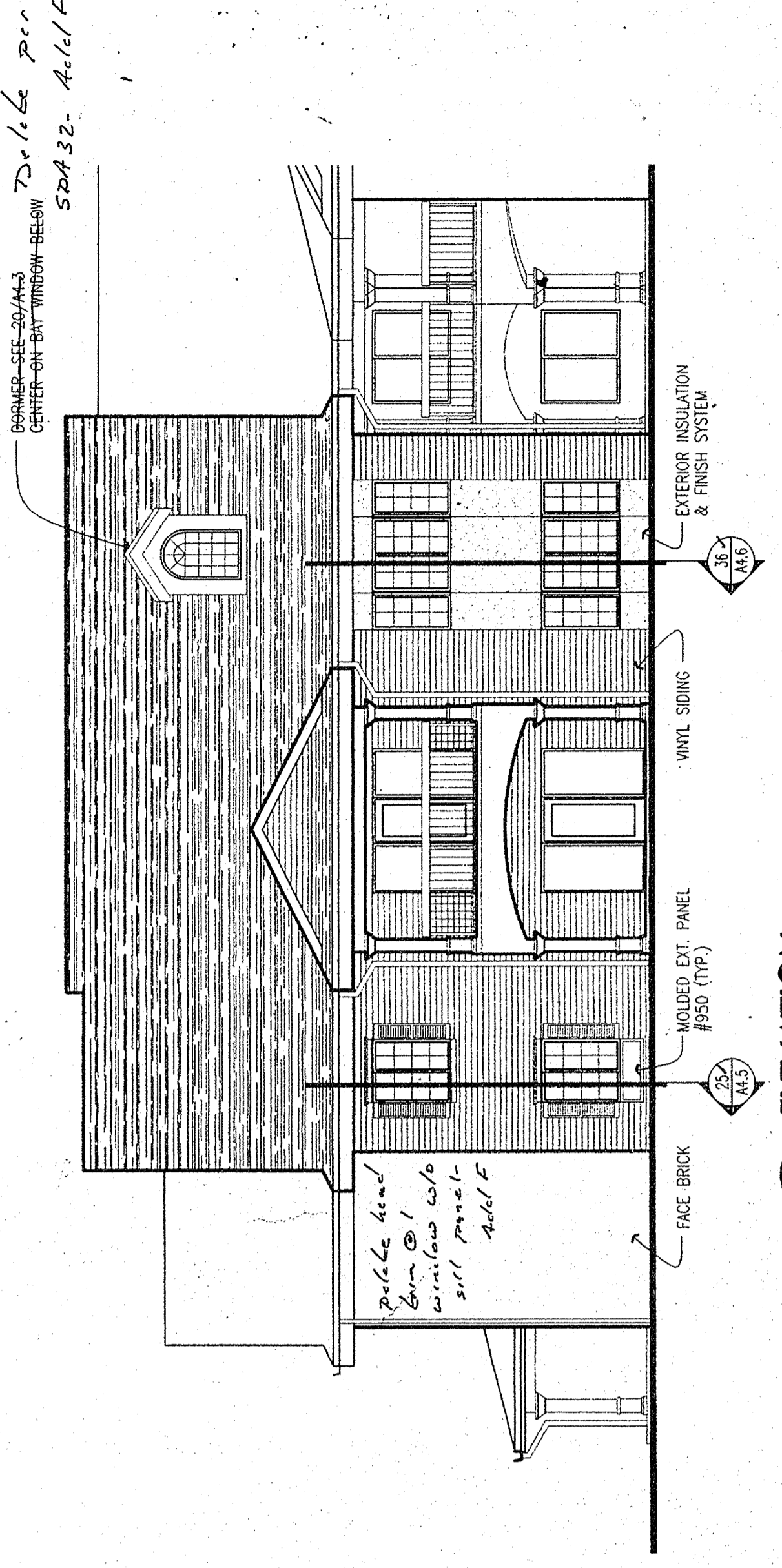
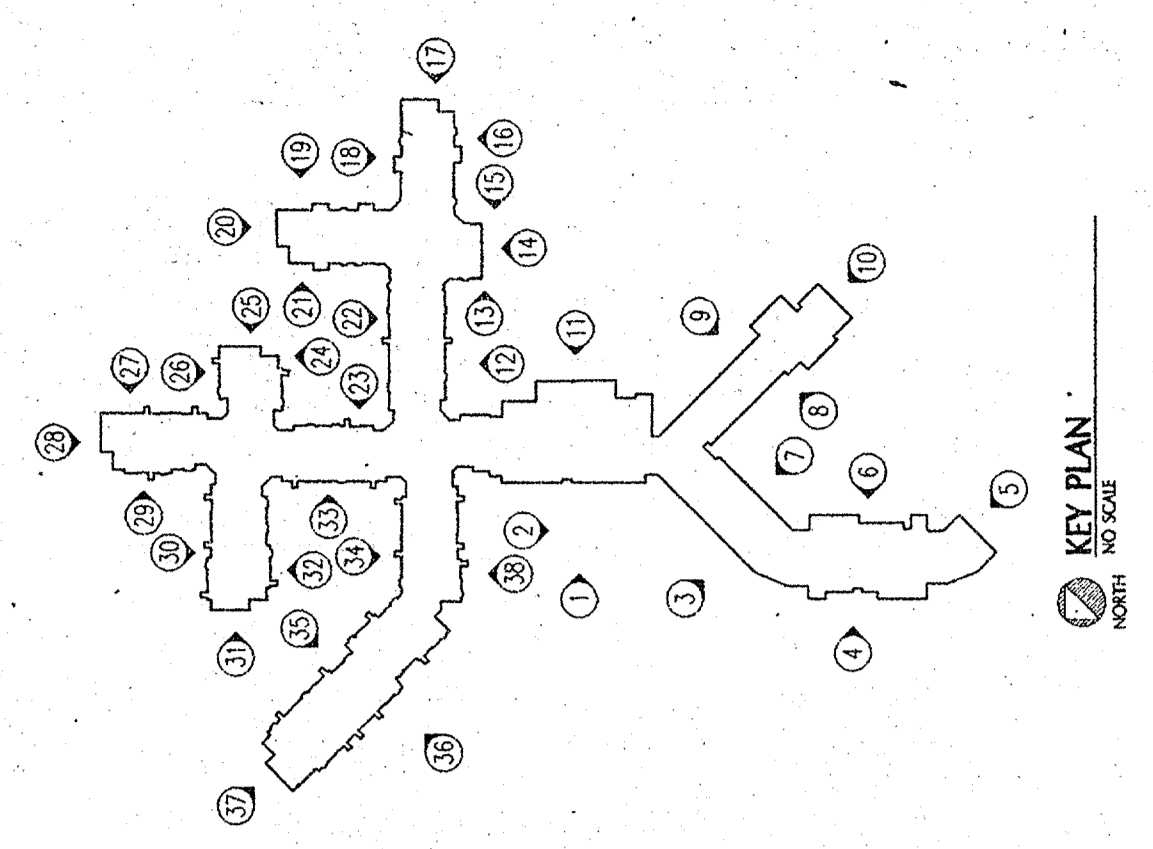
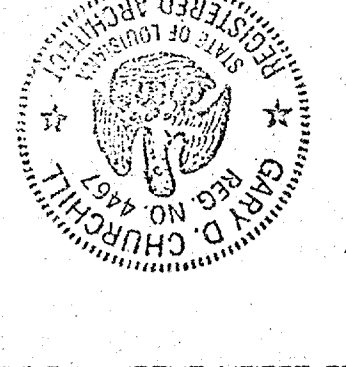


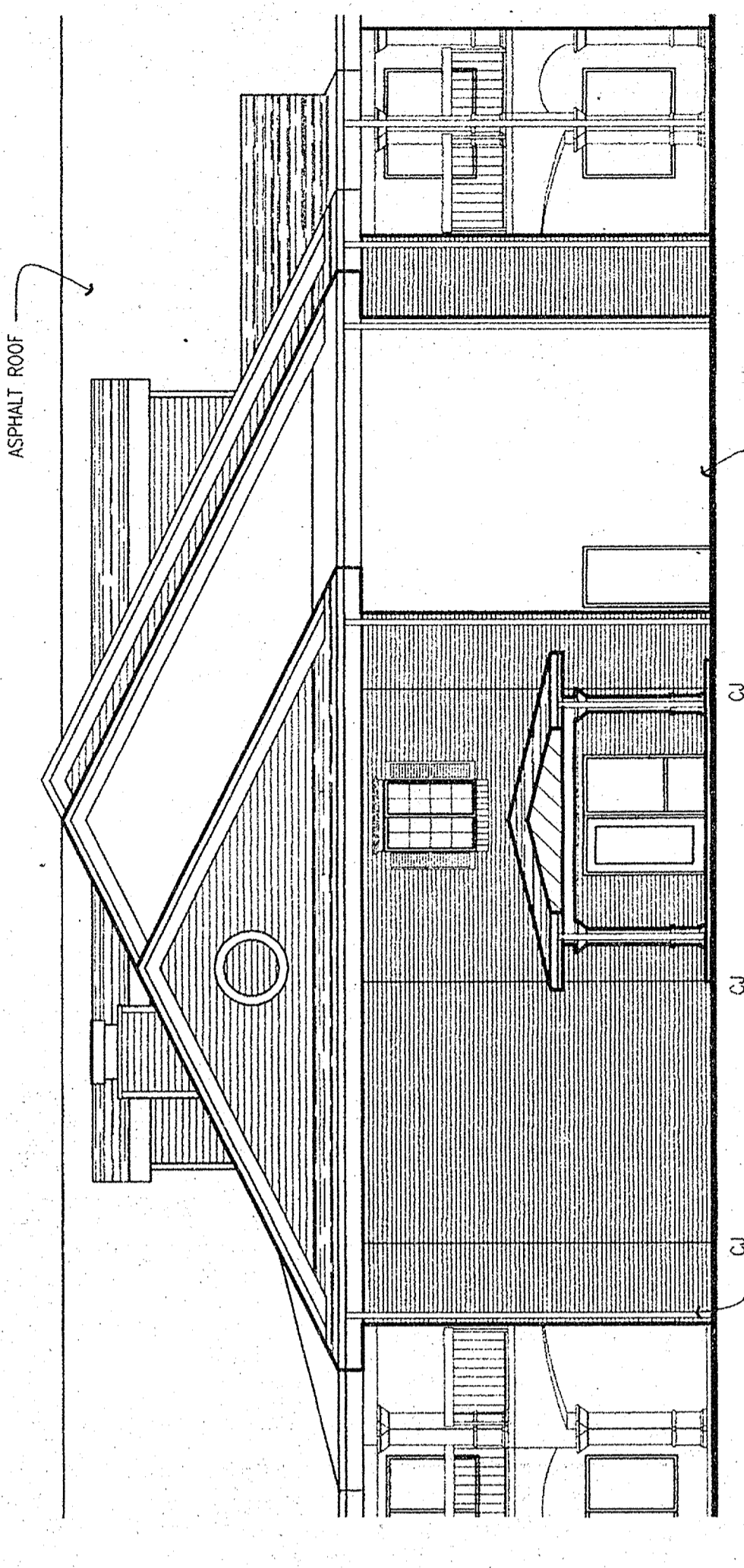
CHRISTWOOD
A CONTINUING CARE RETIREMENT FACILITY
LOUISIANA
COVINGTON

RDC Schutte Wiscam Birge
ARCHITECTURE
8605 Indian Hills Drive Suite 100 Omaha, Nebraska 68114 402-392-0733 FAX 402-392-0413
INTERIOR DESIGN PLANNING

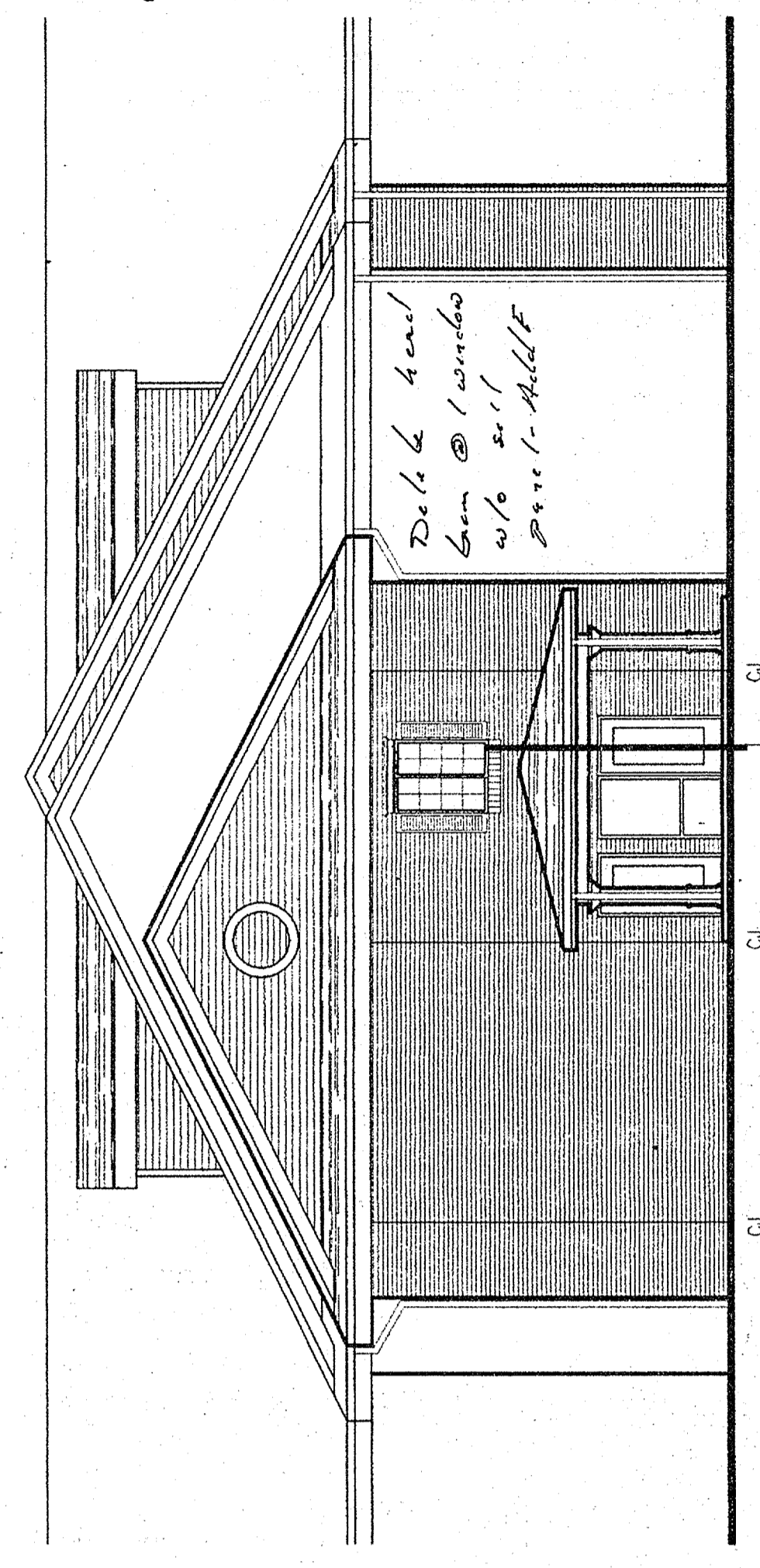
These documents have been prepared for the CHRISTWOOD REIREMENT CENTERS project. They are not suitable for use on other projects or in other locations without the express written approval and participation of RDC Schutte Wiscam Birge, Inc. Reproduction is prohibited.
© RDC Schutte Wiscam Birge



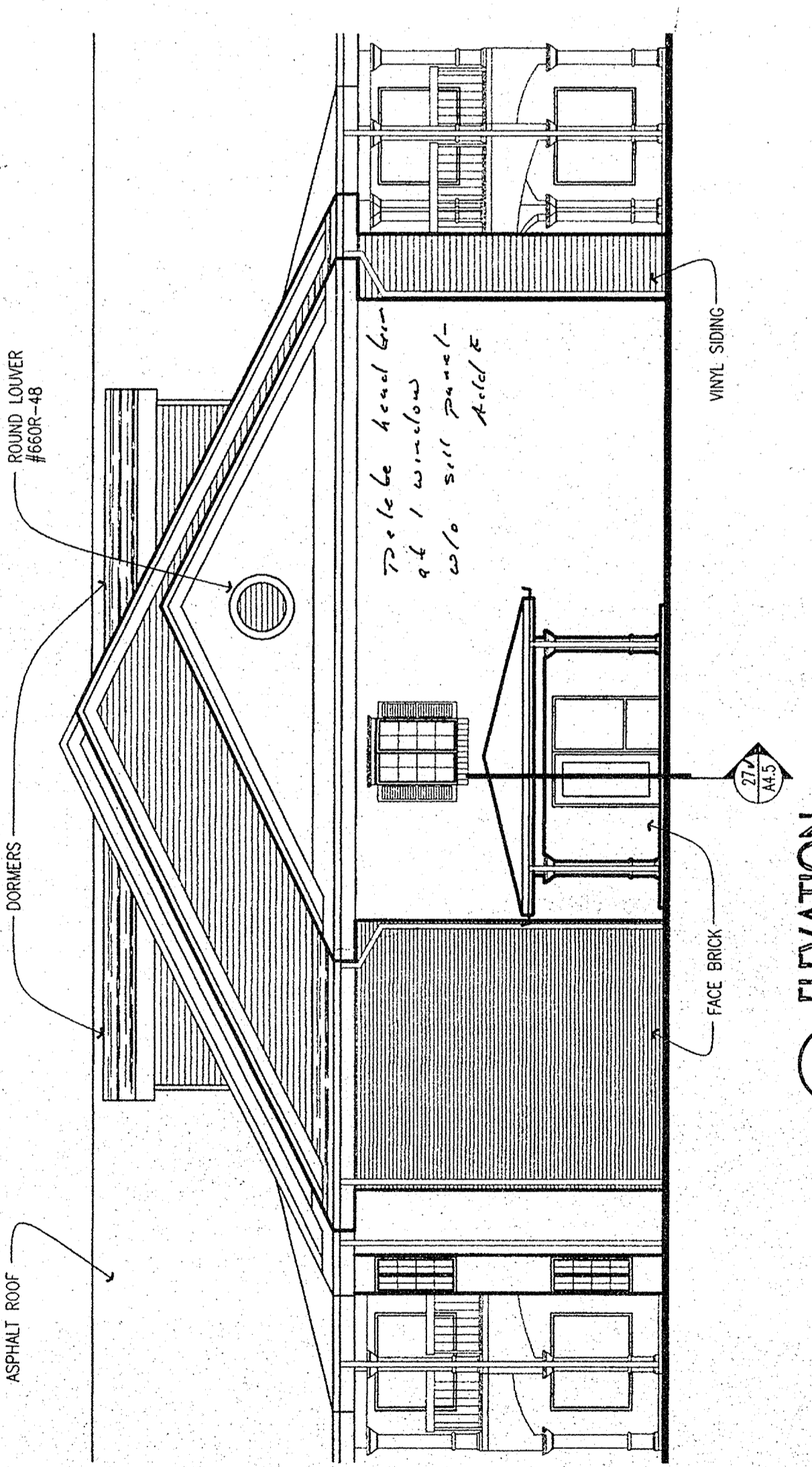
26 ELEVATION
1/8" = 1'-0"



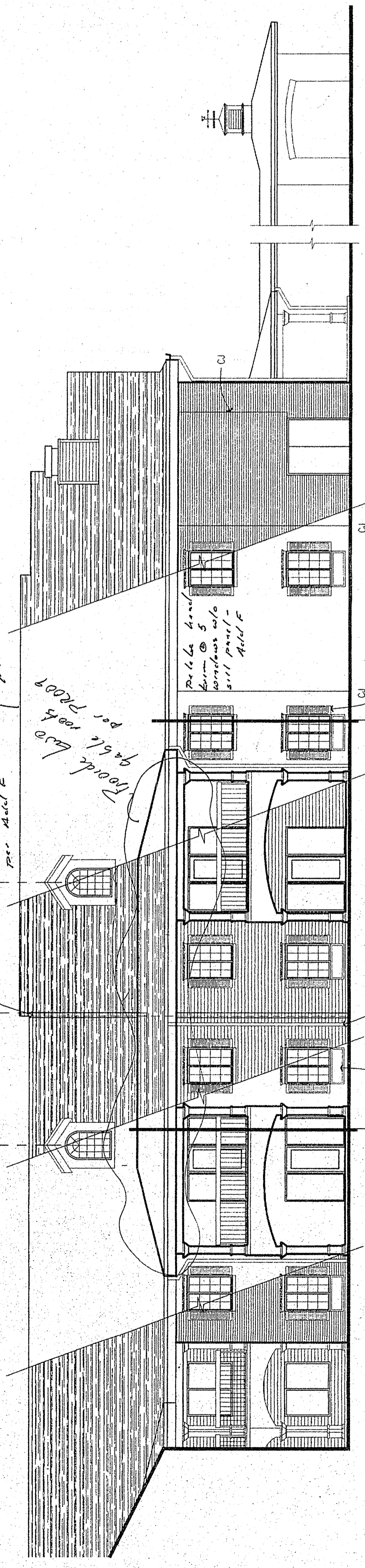
28 ELEVATION
1/8" = 1'-0"



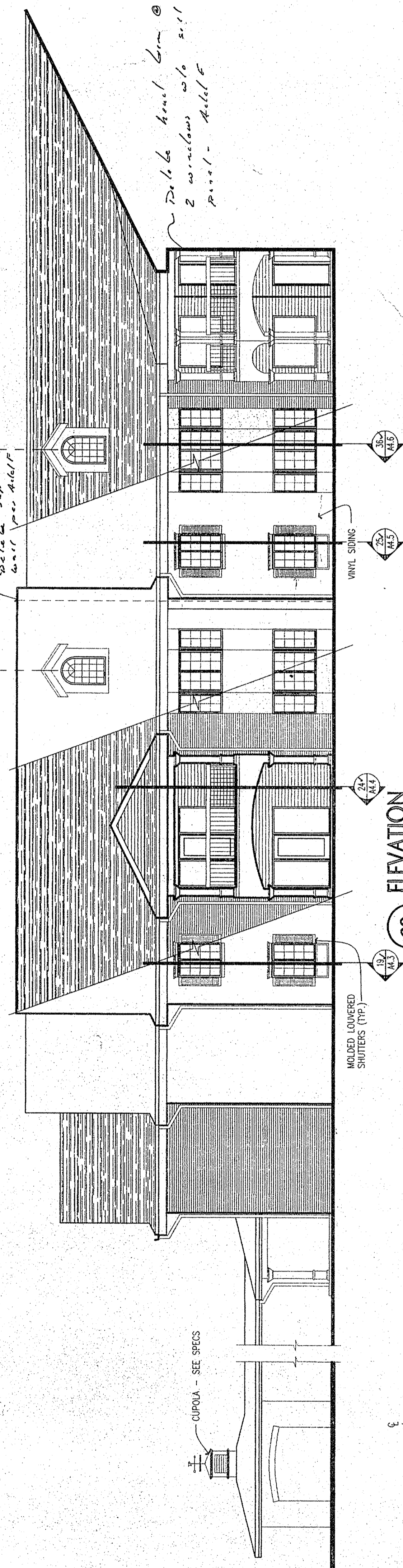
31 ELEVATION
1/8" = 1'-0"



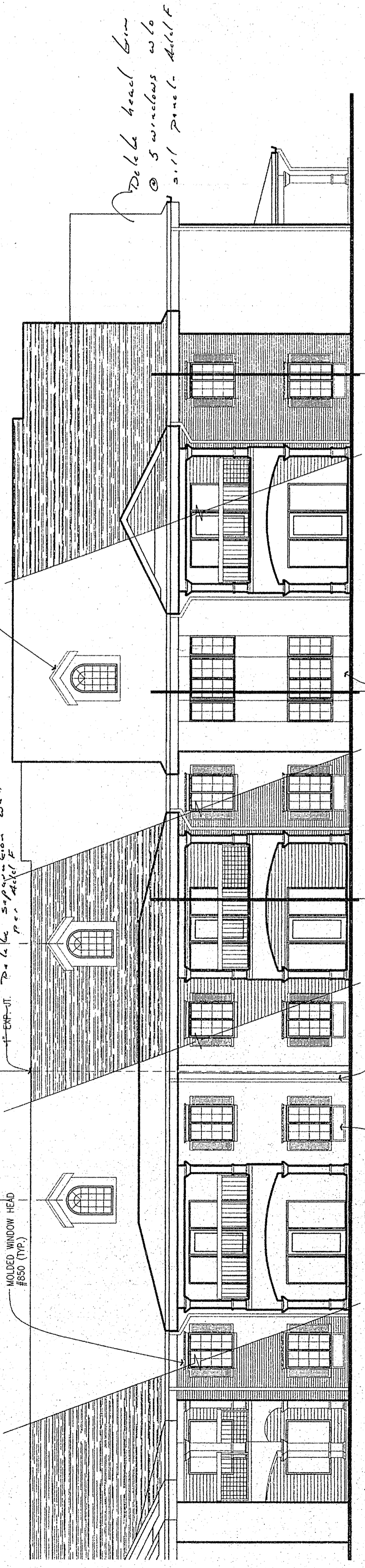
25 ELEVATION
1/8" = 1'-0"



27 ELEVATION
1/8" = 1'-0"



29 ELEVATION
1/8" = 1'-0"



30 ELEVATION
1/8" = 1'-0"