

CHRISTWOOD
 A CONTINUING CARE RETIREMENT FACILITY
 LOUISIANA
 COVINGTON

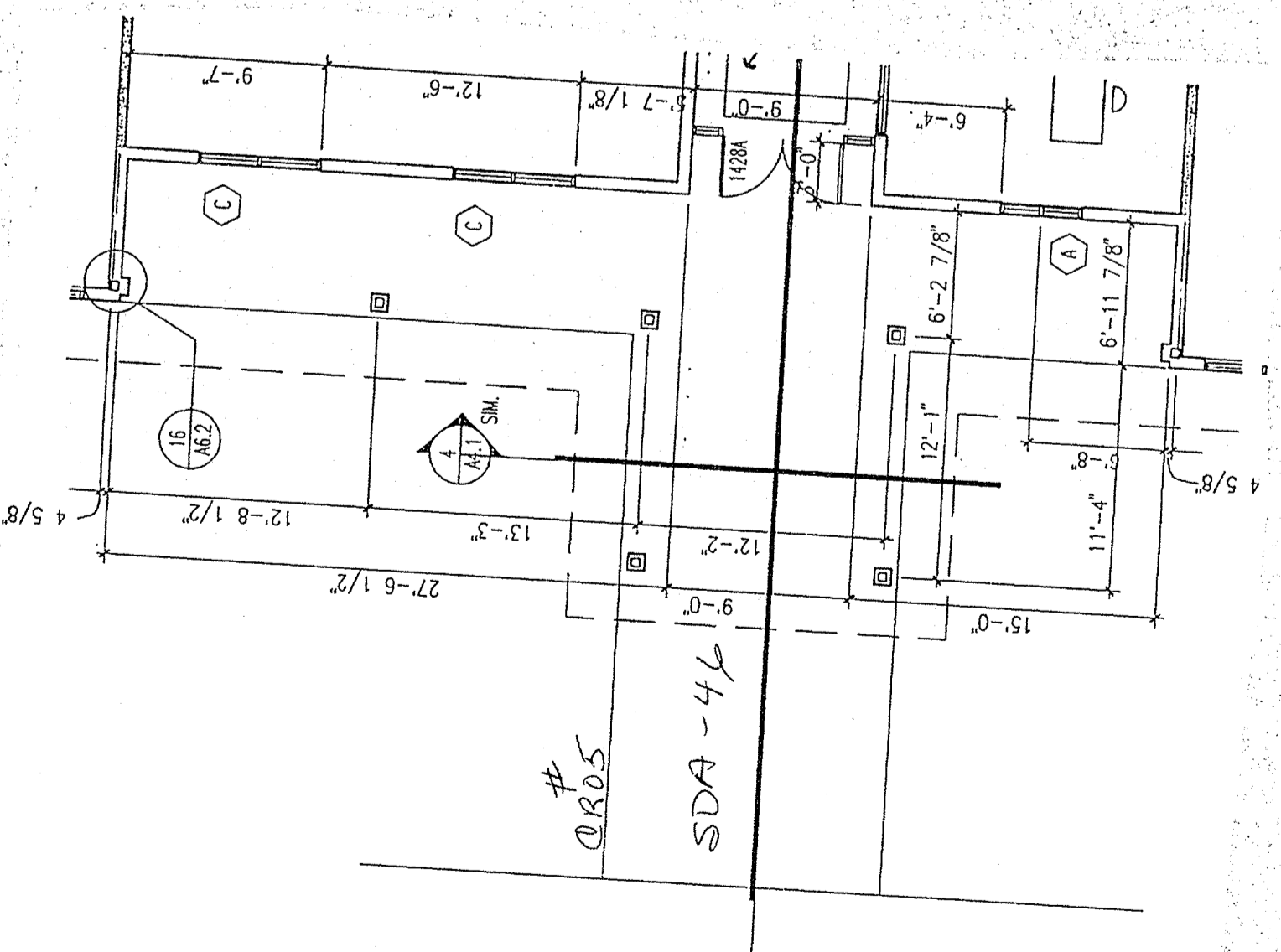
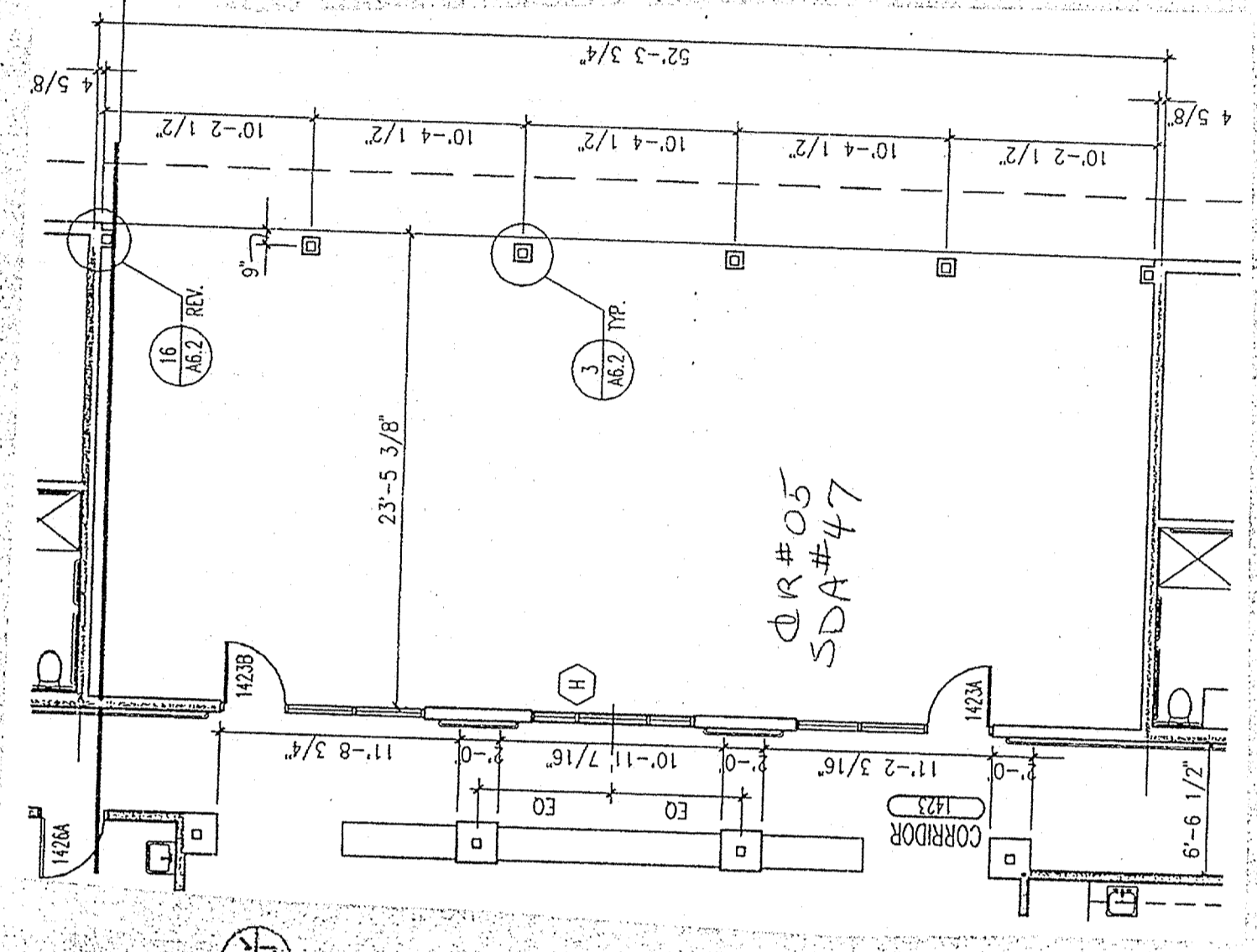
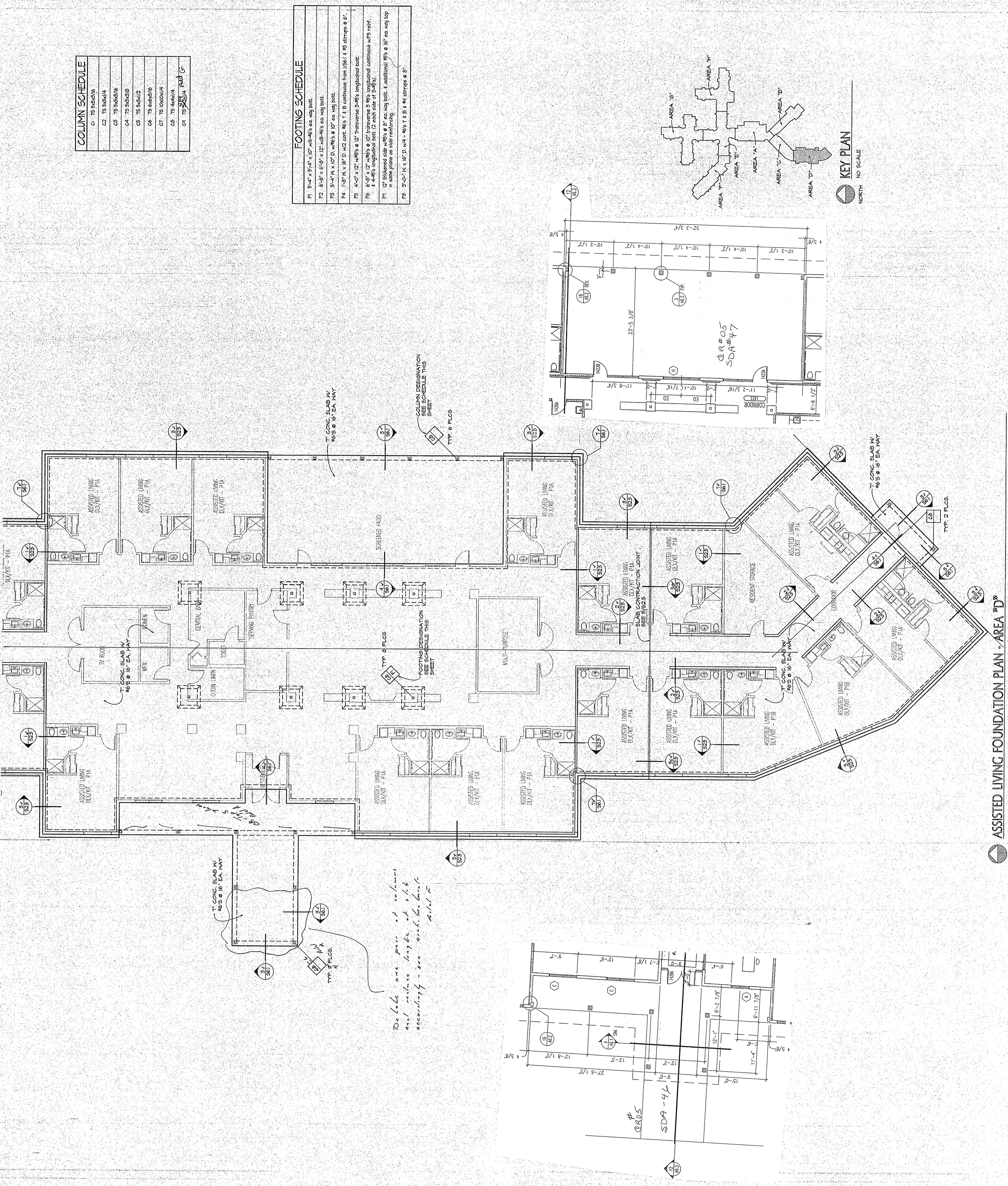
RDC Schutte Wiscam Birge
 ARCHITECTURE
 8003 Indian Hills Drive Suite 100
 Metairie, Louisiana 70001
 INTERIOR DESIGN 504.885.8814
 PLANNING 504.885.8814

PROFESSIONAL ENGINEER
 STATE OF LOUISIANA
 LICENSE NO. 10000
 RDC Schutte Wiscam Birge
 CIVIL ENGINEER
 LICENSE NO. 10000

These documents have been prepared for the CHRISTWOOD RETIREMENT CENTER project. They are not valid for use on other projects or other locations without the express written approval and participation of RDC Schutte Wiscam Birge, Inc. Reproduction is prohibited.

COLUMN SCHEDULE	
C1	TS 5x5x1/4
C2	TS 5x5x1/4
C3	TS 5x5x1/4
C4	TS 5x5x1/4
C5	TS 5x5x1/2
C6	TS 6x6x1/4
C7	TS 6x6x1/4
C8	TS 6x6x1/4
C9	TS 6x6x1/4

FOOTING SCHEDULE	
F1	5'-4" x 5'-4" x 12" w/6-#6 ea. way bott.
F2	6'-8" x 6'-8" x 12" w/6-#6 ea. way bott.
F3	5'-4" x 10'-0" x 12" w/6-#6 ea. way bott.
F4	1'-0" x 1'-0" x 12" w/2 cont. #6's T & B continuous from (56) & (6) strips @ 6".
F5	4'-0" x 12" w/6's @ 12" transverse & 6's longitudinal bott.
F6	6'-0" x 12" w/6's @ 12" transverse & 6's longitudinal continuous w/18' reinf. & 4-#6's longitudinal bott. (2 each side @ 3-#6's).
F7	12" thickened slab w/6's @ 8" ea. way bott. & additional 6's @ 16" ea. way top in same plane as slab reinforcing.
F8	5'-0" x 8'-0" x 12" w/4-#6's T & B & 4-#6's strips @ 8".



Del. del. one pair of columns and reduce height of slab accordingly - see arch. layout sheet.

ASSISTED LIVING FOUNDATION PLAN - AREA "D"
 1/8" = 1'-0"
 NORTH

NOTE: SEE STRUCTURAL NOTES ON SHEET S2.0