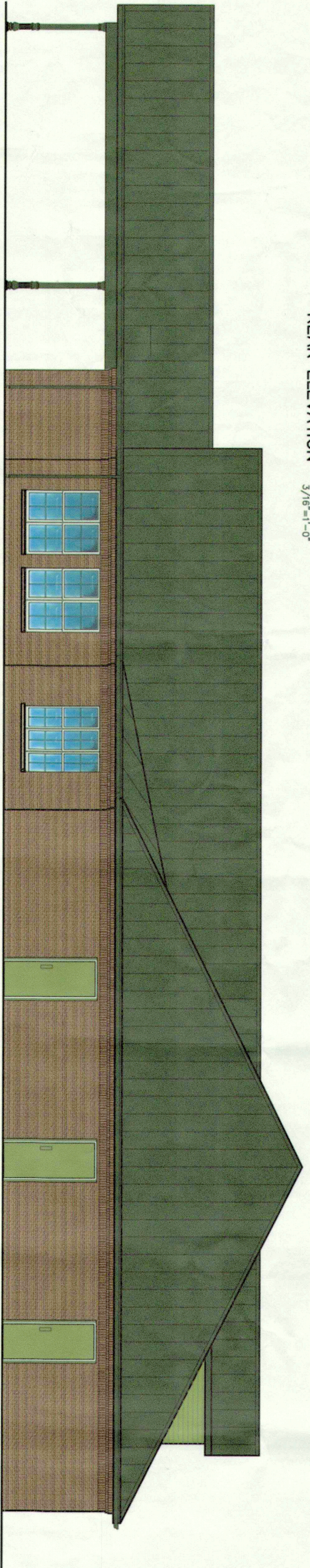


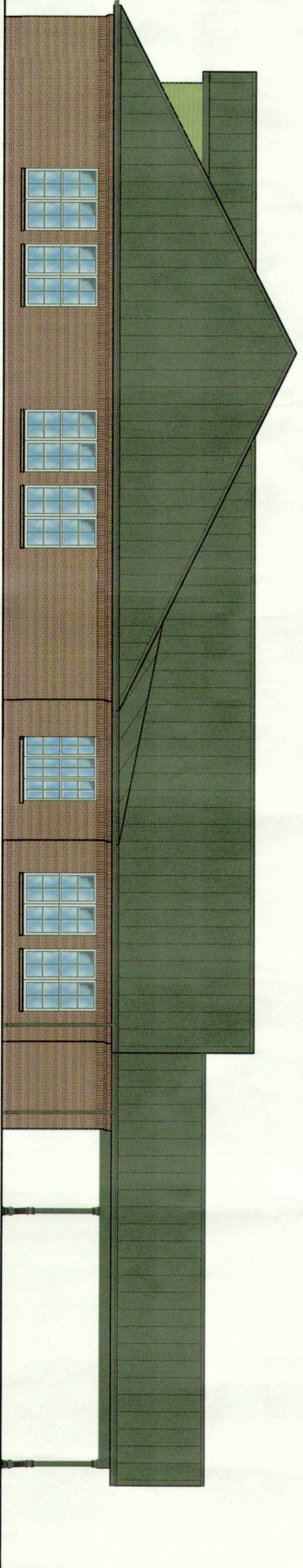
FRONT ELEVATION  
3/16"=1'-0"



REAR ELEVATION  
3/16"=1'-0"



RIGHT ELEVATION  
3/16"=1'-0"



LEFT ELEVATION  
3/16"=1'-0"

**LACOMBE LAND L.L.C.**  
THE NORTH INSTITUTE - MEDICAL OFFICE  
29301 DIXIE RANCH ROAD, LACOMBE, LOUISIANA 70445

ARCHITECT'S PROJECT # 9-03

FOURNET & FOURNET A.I.A.  
503 CARDINAL DRIVE  
P.O. BOX 1256  
THIBODAUX, LA 70302

11/11/03  
SHEET  
1 OF 1