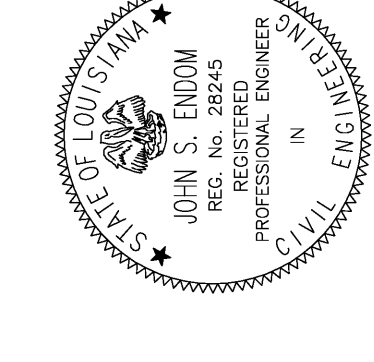


THESE DRAWINGS AND SPECIFICATIONS AND ALL DESIGN, CONDITIONS AND MATERIALS REPRESENTED THEREIN ARE AND SHALL REMAIN THE PROPERTY OF ESKEW + DUMIEZ + HIPPLE AND ROZAS + WARD. NO PART THEREOF SHALL BE COPIED, REPRODUCED, REPRODUCED OR DISCLOSED TO OTHERS OR USED IN ANY MANNER WITHOUT THE WRITTEN CONSENT OF THE ARCHITECT. VISUAL CONTACT WITH THESE DRAWINGS OR SPECIFICATIONS OR ANY PART THEREOF SHALL BE PROHIBITED WITHOUT THE WRITTEN CONSENT OF THE ARCHITECT. VISUAL CONTACT WITH THESE DRAWINGS OR SPECIFICATIONS OR ANY PART THEREOF SHALL BE PROHIBITED WITHOUT THE WRITTEN CONSENT OF THE ARCHITECT. VISUAL CONTACT WITH THESE DRAWINGS OR SPECIFICATIONS OR ANY PART THEREOF SHALL BE PROHIBITED WITHOUT THE WRITTEN CONSENT OF THE ARCHITECT.

OCHSNER
NORTH CAMPUS
INTERNAL
MEDICINE
RELOCATION
 OCHSNER MEDICAL CENTER
 1401 Jefferson Highway
 Jefferson, LA 70121

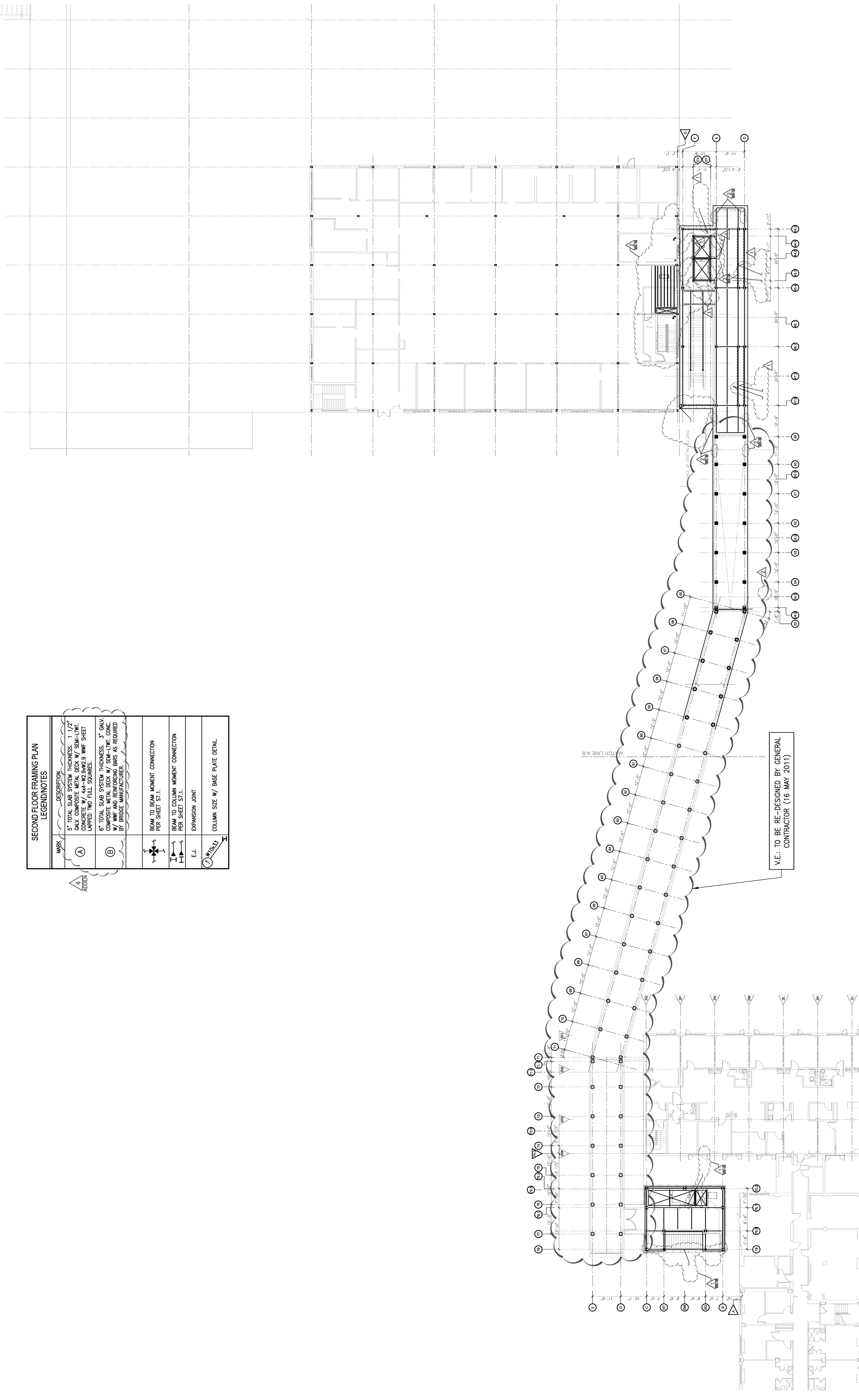
Copyright © 2010
 Eskew+Dumiez+Hipple /
 Rozas+Ward, Joint Venture
 Date: 16 DECEMBER 2010
 Adden 4 14 JAN. 2011
 Adden 5 174 JAN. 2011



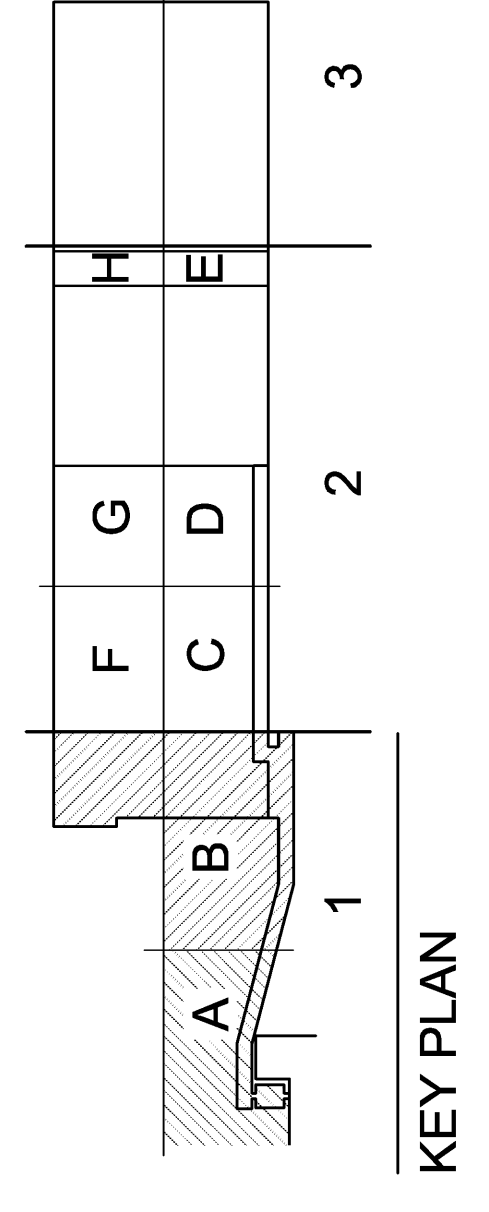
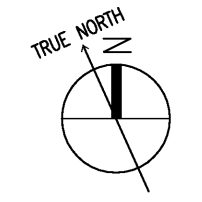
OVERALL SECOND FLOOR FRAMING PLAN
 EDR No. 09023
 RWA No. 09024
 drawn: HENAO
 checked: ENDOM
 approved: _____
 sheet: _____

SECOND FLOOR FRAMING PLAN LEGEND/NOTES	
MARK	DESCRIPTION
(A)	5" TOTAL SLAB SYSTEM THICKNESS. 1 1/2" GALV. COMPOSITE METAL DECK W/ SEMI-LWT. CONCRETE W/ #4-#2@20" W/WF SHEET LAPPED TWO FULL SPANS.
(B)	6" TOTAL SLAB SYSTEM THICKNESS. 3" GALV. COMPOSITE METAL DECK W/ SEMI-LWT. CONCRETE W/ #4-#2@20" W/WF AND REINFORCING BARS AS REQUIRED BY BRIDGE MANUFACTURER.
+	BEAM TO BEAM MOMENT CONNECTION PER SHEET S7.1.
⊥	BEAM TO COLUMN MOMENT CONNECTION PER SHEET S7.1.
E.J.	EXPANSION JOINT
⊙	COLUMN SIZE W/ BASE PLATE DETAIL

4
 ADDEN



1 OVERALL SECOND FLOOR FRAMING PLAN
 1/16" = 1'-0"
 S2.1



KEY PLAN