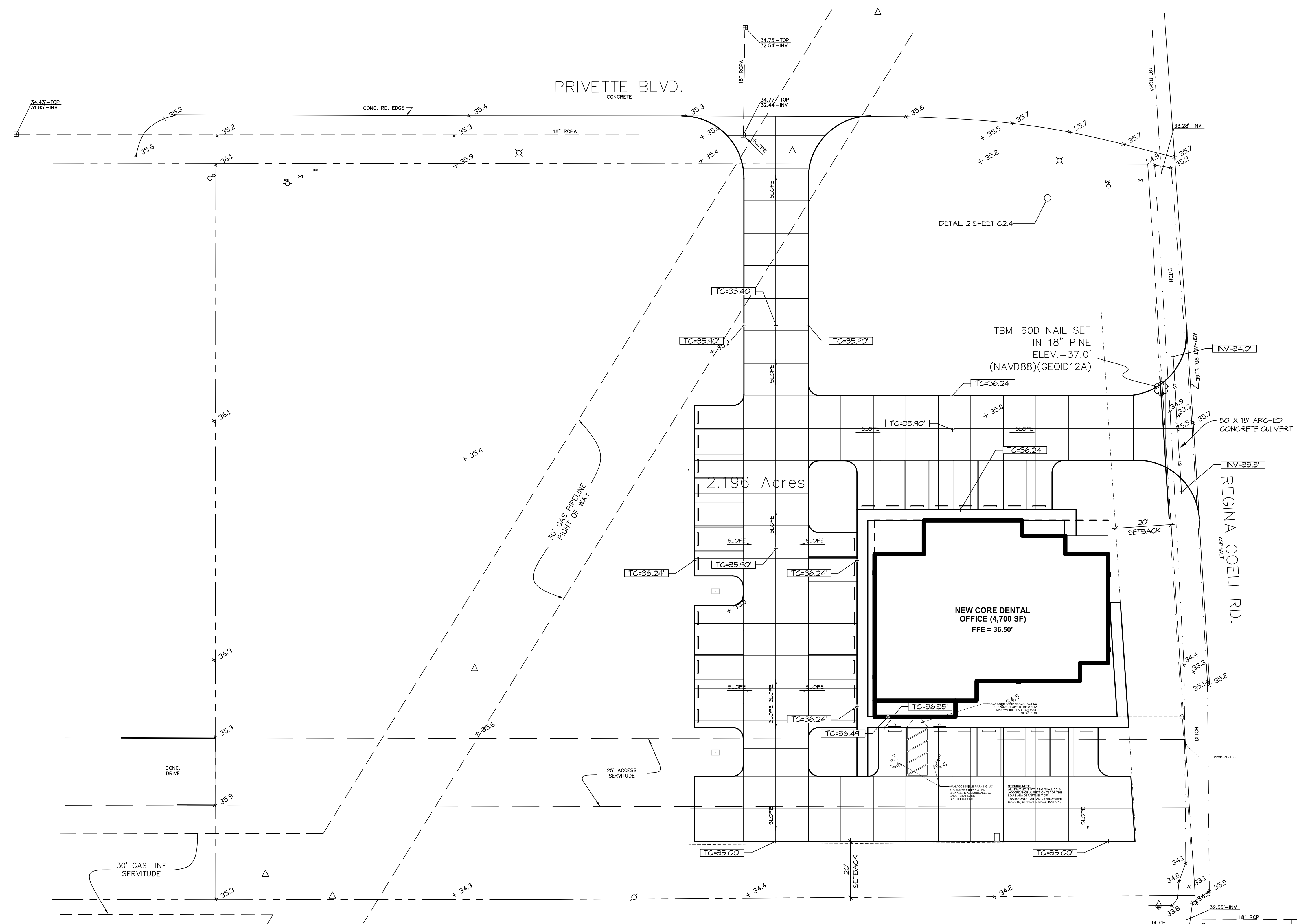
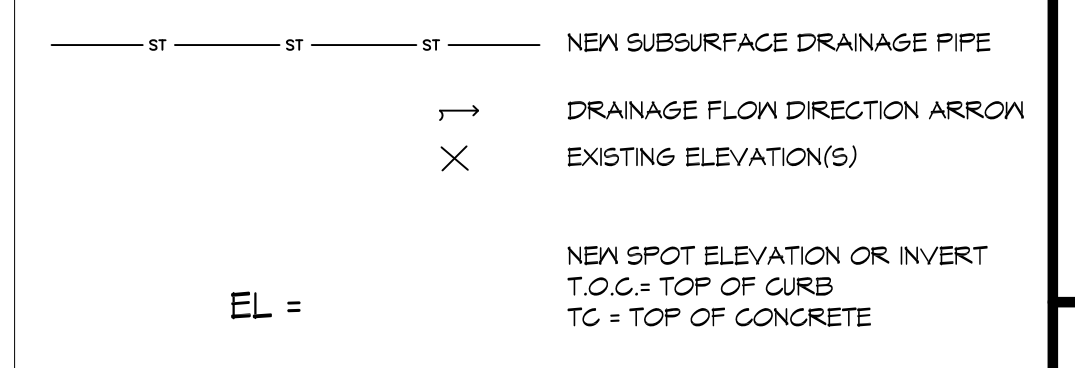


3 TYPICAL CATCH BASIN PROTECTION
SCALE: N.T.S.

GENERAL SITE DRAINAGE NOTES

1. THE CONTRACTOR SHALL PROCURE ALL APPLICABLE PERMITS, LICENSES AND CERTIFICATES RELATIVE TO THE TRADES TO COMPLETE THE PROJECT.
2. THE CONTRACTOR IS TO VERIFY ALL INVERT AND TOP ELEVATIONS OF EXISTING AND NEW STORM DRAINS, AND REPORT ANY DISCREPANCIES TO THE ENGINEER.
3. THE CONTRACTOR SHALL BE RESPONSIBLE FOR DETERMINING THE LOCATION OF ALL UNDERGROUND UTILITIES PRIOR TO THE START OF CONSTRUCTION AND TO NOTIFY THE ENGINEER OF ANY POTENTIAL CONFLICTS. THE CONTRACTOR SHALL DIG TEST HOLES OVER ALL EXISTING UTILITIES PRIOR TO CONSTRUCTION TO DETERMINE THEIR EXACT LOCATION. CONTRACTOR SHALL CONTACT LOUISIANA ONE CALL PRIOR TO COMMENCEMENT OF ANY SITE EXCAVATION.
4. ALL EROSION CONTROL DEVICES SHALL BE CONSTRUCTED IN ACCORDANCE WITH THE STORMWATER PREVENTION PLAN AND EROSION CONTROL DETAILS, PRIOR TO THE START OF CONSTRUCTION.
5. ELEVATIONS SHOWN ARE MSL.

SITE DRAINAGE LEGEND



LA. HWY 25
ASPHALT
1 SITE DRAINAGE PLAN
SCALE: 1" = 20'

DAMMON
ENGINEERING, INC.
LOUISIANA & MISSISSIPPI

greenleafarchitects
designcollaboratedeliver
985 778 2080



A NEW DENTAL OFFICE
CORE SMILE CENTER
LA HIGHWAY 25 & REGINA COELI RD.
COVINGTON, LA



Issue	Date	Remark
1	4/8/2016	REVISED ELEVATIONS

SHEET NAME
SITE DRAINAGE PLAN

Job No.	215036.01	Sheet No.	
Drawn by	JTL		
Checked by	DD		C2.3
Date	1.29.2016		