

**DAMMON**  
ENGINEERING, INC

CHIEF ENGINEER  
EMMETT  
DAMMON, P.E.  
CHIEF ARCHITECT  
ROBERT  
WILTSE

1095 FLORIDA AVENUE  
SUDELL, LA. 70456  
OFFICE: 985-649-5832  
FAX: 985-641-5950

WEBSITE: [WWW.DAMMONENGINEERING.COM](http://WWW.DAMMONENGINEERING.COM)  
EMAIL: [DAMMONENG@BELLFLOWER.NET](mailto:DAMMONENG@BELLFLOWER.NET)

ARCHITECTURE  
ENGINEERING  
STUDIES  
PLANNING  
INVESTIGATION  
EXPERT WITNESS

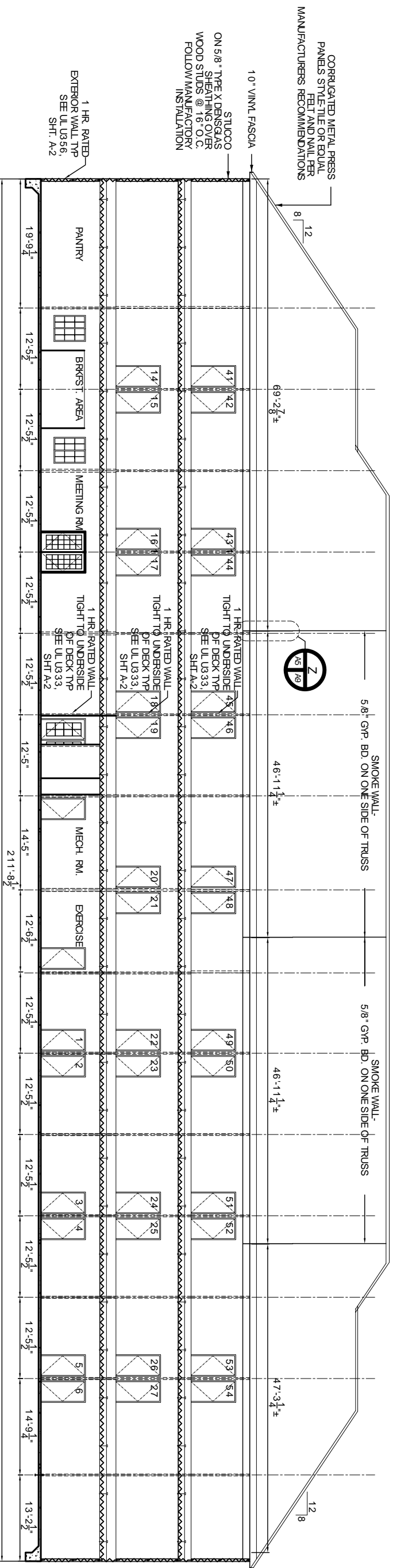
LA QUINTA  
INNS  
AND  
SUITES

DR.  
EDUARDO  
HERNANDEZ  
U. S. HWY. 51  
S. W. RAILROAD AVE  
HAMMOND, LA

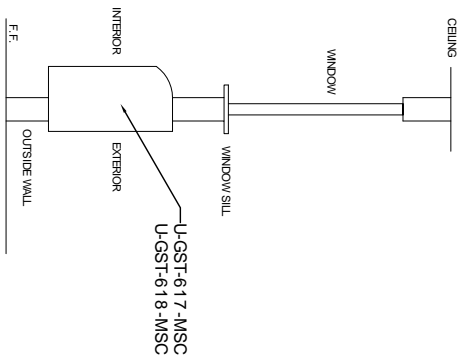
LONGITUDINAL  
SECTION

REV:  
SCALE: AS NOTED  
JOB#: 1838  
DATE: 03-06-08  
SHEET

12-09-09  
OF  
A-5



LONGITUDINAL SECTION J  
SCALE 1/8"=1'-0"



NOTE: ALL DIMENSIONS SHALL BE  
VERIFIED BY GENERAL CONTRACTOR  
A/C & WINDOW ELEVATION  
NT'S