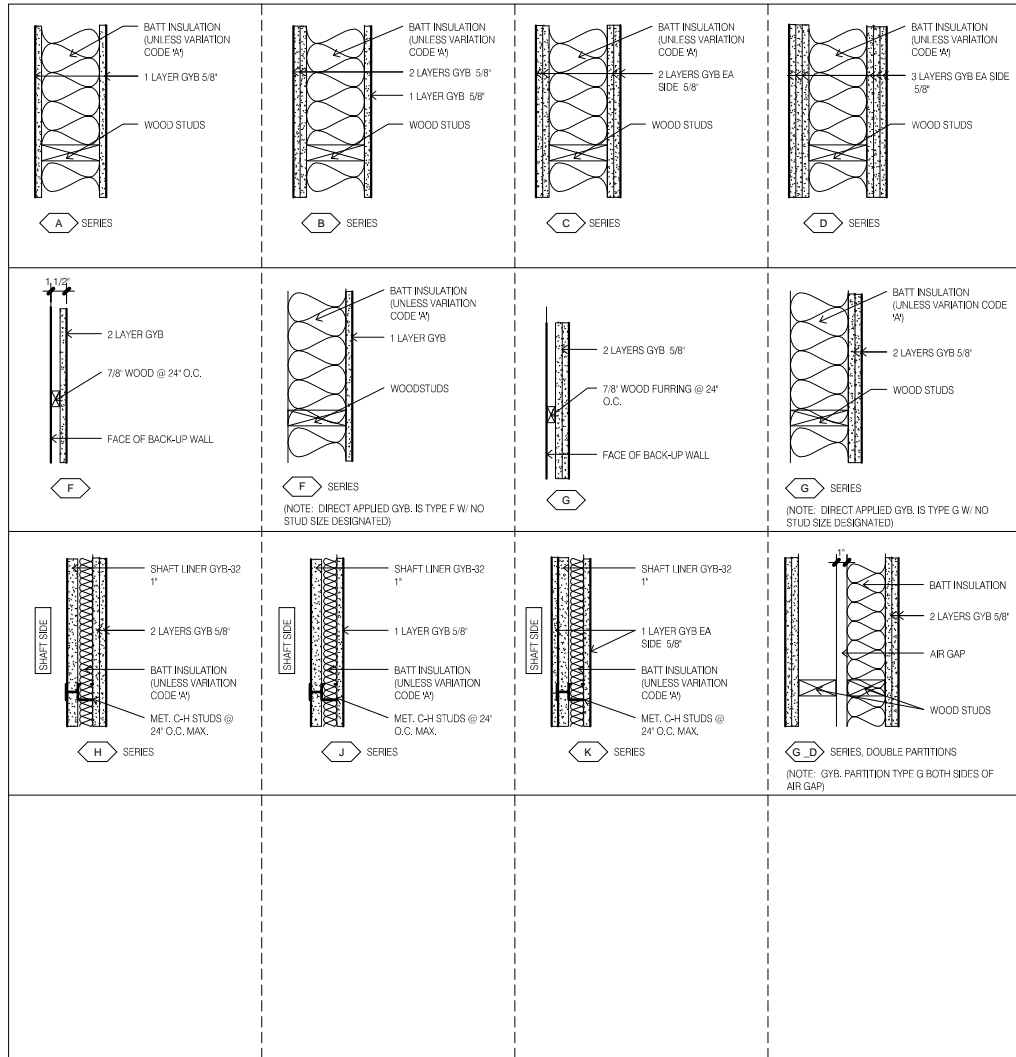


INTERIOR PARTITION TYPES (NON-COMBUSTIBLE)



PARTITION TYPE NOTES:

- PROVIDE 5/8" GYB (GYB) UNLESS NOTED OTHERWISE. EXCEPTIONS: PROVIDE 1/2" CEMENT BOARD BEHIND TILES. PROVIDE 5/8" MOISTURE RESISTANT GYB AND CEILING WALLS AT BATHROOMS, TOILETS, LOCKERS, FOOD SERVICE, POOL, POOL EQUIPMENT, POOL VESTIBULE AND HOUSEKEEPING AREAS INCLUDING 5/8" CEMENT BOARD 12" HIGH BASE. REFER TO TYPICAL NON-LOAD BEARING INTERIOR PARTITION STUDS, TYPICAL NON-LOAD BEARING INTERIOR PARTITION BRACKES, BACKING/BLOCKING SCHEDULE NOTES AND PARTITION DEFLECTION DETAIL AT GYB PARTITIONS FOR PARTITION CONSTRUCTION. PROVIDE SEALANT AT BASE OF ALL GYB PARTITIONS. SEE DETAIL 1C - THIS SHEET.
- PROVIDE CONTROL JOINT DETAILS AT RATED AND NON-RATED WALLS EVENLY SPACED AT MAXIMUM 32" SPACING, WHERE DOORS OCCUR IN THE WALL ALIGN JOINT WITH EDGE OF DOOR FRAME, UNLESS NOTED OTHERWISE. FOR BACKING AND BLOCKING INFORMATION REFER TO AND COMPLY WITH MANUFACTURERS INSTRUCTIONS AND SPECIFICATIONS. SEE ALSO BACKING/BLOCKING SCHEDULE NOTES AND LOADING TABLES.

PARTITION TYPE SYMBOL:

- SEE BELOW FOR PARTITION TYPE SYMBOL PLAN REFERENCES.
- INDICATES THE PARTITION TYPE
- INDICATES THE STUD/CMU SIZE TYPE
- INDICATES DOUBLE STUD WALL, ETC. IF USED.
- IF SHOWN - INDICATES PARTITION VARIATION CODES.
- IF SHOWN - INDICATES PARTITION FIRE/SMOKE RATING.

PARTITION STUD/CMU SIZE: SEE ALSO 2 VARIATION STAGGERED STUDS) NONE DENOTES, 0" STL STUD, 0" WD STUD, (DIRECT APPLIED W/SHIM ONLY), 0 DENOTES, 7/8" STL STUD, 3/4" WD STUD.

1 DENOTES, 1 5/8" STL STUD, 1" WD STUD.

2 DENOTES, 2 1/2" STL STUD, 1 1/2" WD STUD.

3 DENOTES, 3 5/8" STL STUD.

4 DENOTES, 4" STL STUD, 3 1/2" WD STUD, 3 5/8" CMU.

6 DENOTES, 6" STL STUD, 5 1/2" WD STUD, 5 5/8" CMU.

6-4 DENOTES, 6" and 3 5/8" STL STUDS, 5 1/2" AND 3 1/2" WD STUDS.

8 DENOTES, 8" STL STUD, 7 1/2" WD STUD, 7 5/8" CMU.

10 DENOTES, 10" STL STUD, 9 1/2" WD STUD, 9 5/8" CMU.

12 DENOTES, 11 5/8" CMU.

16 DENOTES, 15 5/8" CMU.

PARTITION FIRE RATINGS: FOR PARTITION FIRE RATINGS SEE ALSO LIFE SAFETY PLANS.

PARTITION VARIATION CODES:

A = PARTITION WITHOUT ACOUSTIC INSULATION.

C = PARTITION TO UNDERSIDE OF CLG. CLG IS CONTINUOUS ABOVE CLG.

G = INCREASE STUD MIN. GAUGE TO 16 GA.

N = PARTITION TO 4" ABOVE CLG.

T = THERMAL INSULATION AND VAPOR BARRIER PLACED ON THE HUMID SOURCE SIDE OF PARTITION.

X = 1/2" FIBER REINFORCED GWB - WITH VENEER PLASTER.

Z = STAGGERED STUDS - STUDS IN OVERSIZED TRACK (STUD SIZE IN TAG INDICATES TRACK SIZE), 18" O.C. EACH SIDE.

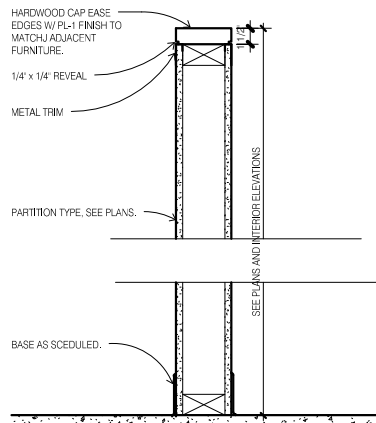
3 = 3 5/8" TRACK WITH 2 1/2" STUDS

4 = 4" TRACK WITH 2 1/2" STUDS

6 = 6" TRACK WITH 3 5/8" OR 4" STUDS

8 = 8" TRACK WITH 6" STUDS

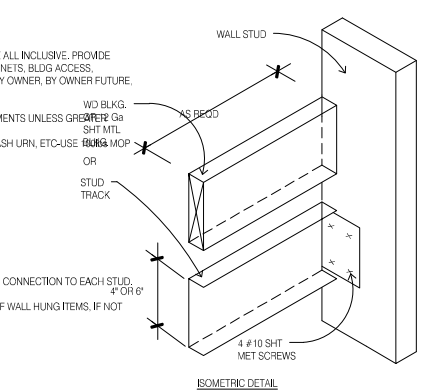
PARTITION TYPE SCHEDULE				
TYPE	WIDTH	STUD	FIRE ASSEMBLY TEST	STC RATING
A-SERIES				
A4	4 3/4"	3 1/2"	1 hr max fire rated per WHI 694-0200 or U327/U344/U345	STC 46 BBN-700725
A6	6 3/4"	5 1/2"	1 hr max fire rated per WHI 694-0200 or U327/U344/U345	STC 46 BBN-700725
A8	8 3/4"	7 1/2"	1 hr max fire rated per WHI 694-0200 or U327/U344/U345	STC 46 BBN-700725
C-SERIES				
C4	6"	3 1/2"	2 hr max fire rated per U301 or U344 with resilient channel	50
C6	8"	5 1/2"	2 hr max fire rated per U301 or U344 with resilient channel	50
C8	10"	7 1/2"	2 hr max fire rated per U301 or U344 with resilient channel	50
F-SERIES				
F3	3 1/8"	2 1/2"	NA	NA
F4	4 1/8"	3 1/2"	NA	NA
G-D-SERIES				
G4-D	10 1/2"	3 1/2"	2 hr max fire rated per FM WP360 or GA-WP-3810	STC 58 NGC 3056 test
G6-4-D	1' - 0 1/2"	5 1/2"	2 hr max fire rated per FM WP360 or GA-WP-3810	STC 58 NGC 3056 test
H-SERIES				
H4	5 1/4"	4"	2 HR RATED UL DESIGN U438	47
J-SERIES				
J2	3 1/8"	2 1/2"	1 HR RATED UL DESIGN U469	39



1 PARTITION LOW HEIGHT WALL 1 1/2" = 1'-0"

BACKING/BLOCKING SCHEDULE NOTES:

- PROVIDE BACKING/BLOCKING IN GYB PARTITIONS FOR ALL WALL-HUNG ITEMS.
- THESE ANCHORING DETAILS ARE SHOWN AS TYPICAL AND ARE NOT INTENDED TO BE ALL INCLUSIVE. PROVIDE WOOD OR STEEL BACKING IN PARTITIONS FOR WALL HUNG ITEMS, SUCH AS WALL CABINETS, BLDG ACCESS, BATHROOM ACCESS, SHELVING, DOOR HOLD-OPENERS, & STOPS, ETC. INCLUDING NIC, BY OWNER BY OWNER FUTURE, & RELOCATE EXISTING ITEMS.
- USE THE FOLLOWING ASSUMED LOADS TO DETERMINE BLDG & FASTENER REQUIREMENTS UNLESS GROUP I OR II LOADS ARE KNOWN.
 - S. OSG PTC, TPA, MEMBROS, COAT HOOKS, BPG, TOWEL BAR & RING, MOP HOLDER, ASH URN, ETC USE 100 LB.
 - HANDRAIL, BUMPER RAILS - USE 200 LB CONCENTRATED LOAD.
 - GRAB BARS - USE 250 LB CONCENTRATED LOAD.
 - WALL CABINETS - USE WEIGHT OF CABINET PLUS 100 LB PER FOOT OF SHELF.
 - COUNTERTOPS - USE WEIGHT OF COUNTER TOP PLUS 55 LB PER FOOT OF COUNTER.
 - 12" ADJ SHELVES - USE 40 LB PER BRKT
 - 18" ADJ SHELVES - USE 55 LB PER BRKT
 - 24" ADJ SHELVES - USE 85 LB PER BRKT



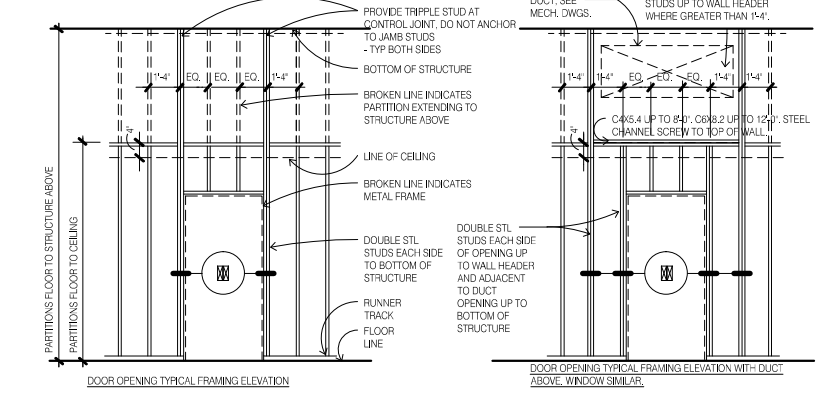
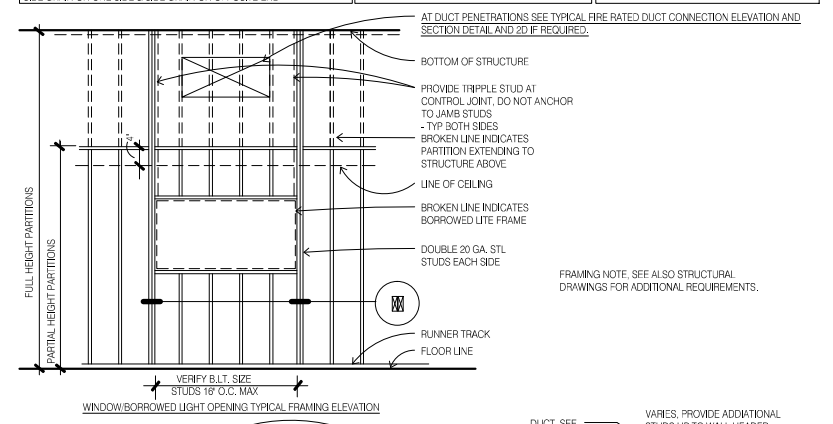
LOADING TABLE NOTES:

- SEE TABLE 1 BELOW FOR SIZE OF WOOD BLDG. QUANTITY AND SIZE OF SCREWS FOR CONNECTION TO EACH STUD, 4" OR 6"
- SEE TABLE 2 OR 3 BELOW FOR QUANTITY AND SIZE OF SCREWS FOR CONNECTION OF WALL HUNG ITEMS, IF NOT ALREADY PROVIDED BY MFR OF WALL HUNG ITEM.

MAXIMUM ALLOWABLE LOAD-IN POUNDS	WOOD SCREW	LENGTH OF WALL HUNG ITEM		
QUAN.	SIZE	1'-4" OR LESS	2'-8" OR LESS	2'-9" OR MORE
2	#6	150	320	480
2	#8	240	480	700
2	#10	320	640	700
2x6 WOOD BLOCKING				
3	#6	240	480	700
3	#8	360	700	700
3	#10	480	700	700

MAXIMUM ALLOWABLE LOAD-IN POUNDS	SCREW SIZE	QUANTITY OF SCREWS		
SCREW SIZE	2	3	4	5
#6	150	225	300	375
#8	212	318	424	530
#10	286	429	572	700
#12	370	555	700	700

MAXIMUM ALLOWABLE LOAD-IN POUNDS	SCREW SIZE	QUANTITY OF SCREWS		
SCREW SIZE	2	3	4	5
#6-S12	224	336	448	560
#8-18	236	354	472	590
#10-16	272	438	584	700
#12-14	288	438	576	700



DAMMON ENGINEERING, INC.
LOUISIANA & MISSISSIPPI
Chief Engineer: Brian Mistich, PE
554 Old Spanish Trail
Shreveport, LA 70508
info@dammoneengineering.com
Phone: 985.649.5832

NO.	DATE	DESCRIPTION

SEAL:

A NEW MARRIOTT HOTEL
TOWNE PLACE SUITES
MICE DESK
BAGS PROJ BLDG
DENHAM SPRINGS, LA 70726
JOB No: 2130 DATE: 04-20-11
DRAWN BY: JAGM CHECKED BY: GCD

SHEET TITLE:
INTERIOR PARTITION TYPES AND DETAILS

DRAWING NUMBER:
A700

SHEET No: 9 of 93

DOOR SCHEDULE - LEVEL 1									
DOOR No.	WIDTH	HEIGHT	DOOR PANEL	DOOR FRAME	HWG	FIRE RATING	STC RATING	COMMENTS/NOTES	
LEVEL 1									
100.1.1	9' - 9 1/8"	7' - 9 1/2"	ASD	ASD	HWG-ASD			Automatic Sliding Door, Exterior.	
100.1.2	9' - 10 3/4"	7' - 9 1/2"	ASD	ASD	HWG-ASD			Automatic Sliding Door, Interior.	
100.3	3' - 2 1/2"	7' - 9 1/2"	DP FGA	SF	HWG-E1			Exterior exit door in SF frame.	
100.6.1	6' - 0"	7' - 6"	DP F SD M	DF TU	EXP-216			Meeting Room sliding door.	
100.6.2	6' - 0"	7' - 6"	DP F SD M	DF TU	EXP-216			Meeting Room sliding door.	
100.8.3	3' - 0"	6' - 8"	DP F	DF HM 00	HWG-P2	20 MIN.		Meeting Room hinged door. Add peep hole viewer.	
100.7.1	7' - 0"	8' - 0"	DP TU WD	DF TU	EXP-215			Breakfast room Tilt up door. See FF&E EXP-215.	
100.7.2	7' - 0"	8' - 0"	DP TU WD	DF TU	EXP-215			Breakfast room Tilt up door. See FF&E EXP-215.	
100.8	3' - 0"	6' - 8"	DP F	DF HM 00	HWG-S2	20 MIN.		Staff Access door.	
100.9	3' - 0"	6' - 8"	DP F	DF HM 00	HWG-S1	45 MIN.		Staff Access door.	
100.10	3' - 0"	6' - 8"	DP F	DF HM 00	HWG-S1	45 MIN.		Service/Housekeeping door.	
100.11.1	4' - 0"	6' - 8"	DP F	DF HM 00	HWG-MEE			Mech/Elec exterior door, PANIC HARDWARE REQ.	
100.11.2	3' - 0"	6' - 8"	DP F	DF HM 00	HWG-ME	45 MIN.		Mech/Elec interior door, PANIC HARDWARE REQ.	
100.12	3' - 0"	6' - 8"	DP F	DF HM 00	HWG-S3	20 MIN.		Storage double doors.	
100.13.1	3' - 0"	6' - 8"	DP F	DF HM 00	HWG-O	20 MIN.		Office door.	
100.13.2	3' - 0"	6' - 8"	DP F	DF HM 00	HWG-O			Office door.	
100.14.1	3' - 0"	6' - 8"	DP F	DF HM 00	HWG-S1			Staff Access door.	
100.14.2	3' - 0"	6' - 8"	DP F	DF HM 00	HWG-S2	45 MIN.		Staff Access door.	
100.15	3' - 0"	6' - 8"	DP F	DF HM 00	HWG-S1			Manager office	
100.16	3' - 0"	6' - 8"	DP F	DF HM 00	HWG-S1			Service/Housekeeping door.	
100.18	3' - 6"	6' - 8"	DP F	DF HM 00	HWG-S1	45 MIN.		Staff Access door.	
100.19	3' - 0"	6' - 8"	DP F	DF HM 00	HWG-P1	20 MIN.		Public access Guest Laundry, Pool Vest and Fitness room doors.	
100.20	3' - 0"	6' - 8"	DP FG	DF HM 00	HWG-P1	45 MIN.		Public access Guest Laundry, Pool Vest and Fitness room doors. 1 Hr glass required.	
100.21	3' - 6"	6' - 8"	DP FGA	DF HM_01	HWG-E2			Exterior exit door in HM frame w/sidelight.	
100.22	3' - 0"	6' - 8"	DP F	DF HM 00	HWG-S1			Storage single doors.	
101.1	3' - 0"	6' - 8"	DP G	DF HM 00	HWG-G	20 MIN.	47	Guestroom Entrance door.	
101.2	3' - 4"	6' - 8"	DP F SD	DF HM CO	HWG-SD			Guestroom Sliding door, NT2	
101.3	3' - 0"	6' - 8"	DP F SD B	DF HM CO	HWG-SDB			Guestroom Bathroom sliding door, NT2.	
103.1	3' - 0"	6' - 8"	DP G	DF HM 00	HWG-G	20 MIN.	47	Guestroom Entrance door.	
103.2	3' - 4"	6' - 8"	DP F SD	DF HM CO	HWG-SD			Guestroom sliding door, NT2.	
103.3	3' - 0"	6' - 8"	DP F	DF HM 00	HWG-GB			Guestroom bathroom hinged door, NT2.	
105.1	3' - 0"	6' - 8"	DP G	DF HM 00	HWG-G	20 MIN.	47	Guestroom Entrance door.	
105.2	3' - 4"	6' - 8"	DP F SD	DF HM CO	HWG-SD			Guestroom sliding door, NT2.	
105.3	3' - 0"	6' - 8"	DP F	DF HM 00	HWG-GB			Guestroom bathroom hinged door, NT2.	
107.1	3' - 0"	6' - 8"	DP G	DF HM 00	HWG-G	20 MIN.	47	Guestroom Entrance door.	
107.2	3' - 4"	6' - 8"	DP F SD	DF HM CO	HWG-SD			Guestroom sliding door, NT2.	
107.3	3' - 0"	6' - 8"	DP F	DF HM 00	HWG-GB			Guestroom bathroom hinged door, NT2.	
109.1	3' - 0"	6' - 8"	DP G	DF HM 00	HWG-G	20 MIN.	47	Guestroom Entrance door.	
109.2	3' - 4"	6' - 8"	DP F SD	DF HM CO	HWG-SD			Guestroom sliding door, NT2.	
109.3	3' - 0"	6' - 8"	DP F	DF HM 00	HWG-GB			Guestroom bathroom hinged door, NT2.	
111.1	3' - 0"	6' - 8"	DP G	DF HM 00	HWG-G	20 MIN.	47	Guestroom Entrance door.	
111.2	3' - 4"	6' - 8"	DP F SD	DF HM CO	HWG-SD			Guestroom sliding door, NT2.	
111.3	3' - 0"	6' - 8"	DP F	DF HM 00	HWG-GB			Guestroom bathroom hinged door, NT2.	
113.1	3' - 0"	6' - 8"	DP G	DF HM 00	HWG-G	20 MIN.	47	Guestroom Entrance door.	
113.2	3' - 4"	6' - 8"	DP F SD	DF HM CO	HWG-SD			Guestroom sliding door, NT2.	
113.3	3' - 0"	6' - 8"	DP F	DF HM 00	HWG-GB			Guestroom bathroom hinged door, NT2.	
115.1	3' - 0"	6' - 8"	DP G	DF HM 00	HWG-G	20 MIN.	47	Guestroom Entrance door.	
115.2	3' - 4"	6' - 8"	DP F SD	DF HM CO	HWG-SD			Guestroom sliding door, NT2.	
115.3	3' - 0"	6' - 8"	DP F	DF HM 00	HWG-GB			Guestroom bathroom hinged door, NT2.	
117.1	3' - 0"	6' - 8"	DP G	DF HM 00	HWG-G	20 MIN.	47	Guestroom Entrance door.	
117.2	3' - 4"	6' - 8"	DP F SD	DF HM CO	HWG-SD			Guestroom sliding door, NT2.	
117.3	3' - 0"	6' - 8"	DP F	DF HM 00	HWG-GB			Guestroom bathroom hinged door, NT2.	
C101	3' - 6"	6' - 8"	DP FGA	DF HM_01	HWG-E2			Exterior exit door in HM frame w/sidelight.	
C102	3' - 6"	6' - 8"	DP FGA	DF HM_01	HWG-E2			Exterior exit door in HM frame w/sidelight.	
C103	3' - 6"	6' - 8"	DP FGA	DF HM_01	HWG-E2			Exterior exit door in HM frame w/sidelight.	
C104.1	3' - 0"	6' - 8"	DP FG	DF HM 00	HWG-P1	45 MIN.		Public access Guest Laundry, Pool Vest and Fitness room doors. 1 Hr glass required.	
C104.2	3' - 0"	6' - 8"	DP N	DF HM 00	HWG-P1	45 MIN.		Public access Guest Laundry, Pool Vest and Fitness room doors.	
CH1	3' - 0"	6' - 8"	DP F	DF HM 00	HWG-C	90 MIN.		Linen Chute Door.	
EC1	3' - 0"	6' - 8"	DP F	DF HM 00	HWG-EL			Electrical Closet double doors.	
EO1.1	4' - 0"	6' - 8"	DP F	DF HM 00	HWG-ELE	90 MIN.		Elevator Equipment room door. Acoustic seal required.	
EO1.2	3' - 0"	6' - 8"	DP F	DF HM 00	HWG-S1			Service/Housekeeping door.	
PEQ1.3	3' - 0"	6' - 8"	DP F	DF HM 00	HWG-S1			Service/Housekeeping door.	
R1	3' - 0"	6' - 8"	DP F	DF HM 00	HWG-WC	20 MIN.		Restroom door.	
R2	3' - 0"	6' - 8"	DP F	DF HM 00	HWG-WC	20 MIN.		Restroom door.	
R3	3' - 0"	6' - 8"	DP F	DF HM 00	HWG-WC			Restroom door.	
ST1.1.1	3' - 0"	6' - 8"	DP N	DF HM 00	HWG-ST	90 MIN.		Stair Entry door on hold open.	
ST1.1.2	3' - 0"	6' - 8"	DP F	DF HM 00	HWG-S1E			Stair Exit door.	
ST2.1.1	3' - 0"	6' - 8"	DP N	DF HM 00	HWG-ST	90 MIN.		Stair Entry door on hold open.	
ST2.1.2	3' - 0"	6' - 8"	DP F	DF HM 00	HWG-S1E			Stair Exit door.	

DOOR GENERAL NOTES:

- REFER TO SPECIFICATIONS FOR DOOR HARDWARE TYPES.
- HAND-ACTIVATED DOOR OPENING HARDWARE SHALL BE CENTERED BETWEEN 34" AND 48" A.F.F. U.N.O.
- REFER TO SPECIFICATION SHEET A710 FOR FINISHES.
- DOOR CLOSER SWEEP PERIOD SHALL BE ADJUSTED SO THAT FROM THE OPEN POSITION OF 70 DEGREES, THE DOOR WILL TAKE AT LEAST 3 SECONDS TO MOVE TO A POINT 3 INCHES FROM THE LATCH, MEASURED TO THE LEADING EDGE OF THE DOOR.
- THE MAXIMUM DOOR OPENING FORCE FOR PUSHING OR PULLING INTERIOR DOORS SHALL BE 5 POUNDS PER FOOT.
- ALL EXTERIOR DOORS ARE TO OPEN OUTWARD AND ARE TO BE SELF CLOSING.
- CLOSERS TO BE PARALLEL ARM STYLE WHERE APPLICABLE.
- DOOR FRAMES TO BE EQUIPPED W/ SILENCER BUTTONS UNLESS GASKETS ARE SPECIFIED.
- ALL EXTERIOR H.M. DOORS AND FRAMES SHALL BE INSULATED.
- FILL ALL VOIDS IN THRESHOLDS W/ SEALANT TO MATCH GROUT.
- SEE FF&E ITEMS FOR SPECIALTY DOORS EXP-215 & EXP-216
- WHERE COAT HOOKS ARE INDICATED IN RESTROOMS AND BATHROOMS, LOCATE COAT HOOK CENTERED ON DOOR ON THE RESTROOMS AND BATHROOMS SIDE OF DOORS.

DOOR OPENING SCHEDULE SPECIFIC NOTES:

- NT1. SEE STORE FRONT ELEVATIONS FOR FRAME TYPES.
NT2. INCREASE TYPICAL DOOR UNDERCUT TO 1".

DOOR OPENING FINISHES SCHEDULE:

ALL INTERIOR DOOR ARE TO BE SOLID CORE WOOD DOORS EXPL FINISHED ON ALL SIDES.

ALL INTERIOR HOLLOW METAL DOORS AND FRAMES ARE TO BE EXP-PT3 FINISHED.

ALL EXTERIOR SOLID CORE HOLLOW METAL DOORS AND FRAMES ARE TO BE EXP-PT3 FINISHED.

ALL ALUMINUM DOORS AND FRAMES ARE TO BE CLEAR ANODIZED ALUMINUM FINISHED.

DOOR SCHEDULE - LEVEL 2									
DOOR No.	WIDTH	HEIGHT	DOOR PANEL	DOOR FRAME	HWG	FIRE RATING	STC RATING	COMMENTS/NOTES	
LEVEL 2									
201.1	3' - 0"	6' - 8"	DP G	DF HM 00	HWG-G	20 MIN.	47	Guestroom Entrance door.	
201.2	3' - 4"	6' - 8"	DP F SD	DF HM CO	HWG-SD			Guestroom sliding door, NT2.	
201.3	3' - 0"	6' - 8"	DP F	DF HM 00	HWG-GB			Guestroom bathroom hinged door, NT2.	
202.1	3' - 0"	6' - 8"	DP G	DF HM 00	HWG-G	20 MIN.	47	Guestroom Entrance door.	
202.2	3' - 4"	6' - 8"	DP F SD	DF HM CO	HWG-SD			Guestroom sliding door, NT2.	
202.3	3' - 0"	6' - 8"	DP F	DF HM 00	HWG-GB			Guestroom bathroom hinged door, NT2.	
203.1	3' - 0"	6' - 8"	DP G	DF HM 00	HWG-G	20 MIN.	47	Guestroom Entrance door.	
203.2	3' - 4"	6' - 8"	DP F SD	DF HM CO	HWG-SD			Guestroom sliding door, NT2.	
203.3	3' - 0"	6' - 8"	DP F	DF HM 00	HWG-GB			Guestroom bathroom hinged door, NT2.	
204.1	3' - 0"	6' - 8"	DP G	DF HM 00	HWG-G	20 MIN.	47	Guestroom Entrance door.	
204.2	3' - 4"	6' - 8"	DP F SD	DF HM CO	HWG-SD			Guestroom sliding door, NT2.	
204.3	3' - 0"	6' - 8"	DP F	DF HM 00	HWG-GB			Guestroom bathroom hinged door, NT2.	
205.1	3' - 0"	6' - 8"	DP G	DF HM 00	HWG-G	20 MIN.	47	Guestroom Entrance door.	
205.2	3' - 4"	6' - 8"	DP F SD	DF HM CO	HWG-SD			Guestroom sliding door, NT2.	
205.3	3' - 0"	6' - 8"	DP F	DF HM 00	HWG-GB			Guestroom bathroom hinged door, NT2.	
206.1	3' - 0"	6' - 8"	DP G	DF HM 00	HWG-G	20 MIN.	47	Guestroom Entrance door.	
206.2	3' - 4"	6' - 8"	DP F SD	DF HM CO	HWG-SD			Guestroom sliding door, NT2.	
206.3	3' - 0"	6' - 8"	DP F	DF HM 00	HWG-GB			Guestroom bathroom hinged door, NT2.	
207.1	3' - 0"	6' - 8"	DP G	DF HM 00	HWG-G	20 MIN.	47	Guestroom Entrance door.	
207.2	3' - 4"	6' - 8"	DP F SD	DF HM CO	HWG-SD			Guestroom sliding door, NT2.	
207.3	3' - 0"	6' - 8"	DP F SD B	DF HM CO	HWG-SDB			Double acting Guestroom connecting door.	
207.4	3' - 0"	6' - 8"	DP G	DF HM DA	HWG-DA	45 MIN.	47	Guestroom Entrance door.	
208.1	3' - 0"	6' - 8"	DP G	DF HM 00	HWG-G	20 MIN.	47	Guestroom Entrance door.	
208.2	3' - 4"	6' - 8"	DP F SD	DF HM CO	HWG-SD			Guestroom sliding door, NT2.	
208.3	3' - 0"	6' - 8"	DP F	DF HM 00	HWG-GB			Guestroom bathroom hinged door, NT2.	
209.1	3' - 0"	6' - 8"	DP G	DF HM 00	HWG-G	20 MIN.	47	Guestroom Entrance door.	
209.2	3' - 4"	6' - 8"	DP F SD	DF HM CO	HWG-SD			Guestroom sliding door, NT2.	
209.3	3' - 0"	6' - 8"	DP F	DF HM 00	HWG-GB			Guestroom bathroom hinged door, NT2.	
210.1	3' - 0"	6' - 8"	DP G	DF HM 00	HWG-G	20 MIN.	47	Guestroom Entrance door.	
210.2	3' - 4"	6' - 8"	DP F SD	DF HM CO	HWG-SD			Guestroom sliding door, NT2.	
210.3	3' - 0"	6' - 8"	DP F	DF HM 00	HWG-GB			Guestroom bathroom hinged door, NT2.	
211.1	3' - 0"	6' - 8"	DP G	DF HM 00	HWG-G	20 MIN.	47	Guestroom Entrance door.	
211.2	3' - 4"	6' - 8"	DP F SD	DF HM CO	HWG-SD			Guestroom sliding door, NT2.	
211.3	3' - 0"	6' - 8"	DP F	DF HM 00	HWG-GB			Guestroom bathroom hinged door, NT2.	
212.1	3' - 0"	6' - 8"	DP G	DF HM 00	HWG-G	20 MIN.	47	Guestroom Entrance door.	
212.2	3' - 4"	6' - 8"	DP F SD	DF HM CO	HWG-SD			Guestroom sliding door, NT2.	
212.3	3' - 0"	6' - 8"	DP F	DF HM 00	HWG-GB			Guestroom bathroom hinged door, NT2.	
213.1	3' - 0"	6' - 8"	DP G	DF HM 00	HWG-G	20 MIN.	47	Guestroom Entrance door.	
213.2	3' - 4"	6' - 8"	DP F SD	DF HM CO	HWG-SD			Guestroom sliding door, NT2.	
213.3	3' - 0"	6' - 8"	DP F	DF HM 00	HWG-GB			Guestroom bathroom hinged door, NT2.	
214.1	3' - 0"	6' - 8"	DP G	DF HM 00	HWG-G	20 MIN.	47	Guestroom Entrance door.	
214.2	3' - 4"	6' - 8"	DP F SD	DF HM CO	HWG-SD			Guestroom sliding door, NT2.	
214.3	3' - 0"	6' - 8"	DP F	DF HM 00	HWG-GB			Guestroom bathroom hinged door, NT2.	
215.1	3' - 0"	6' - 8"	DP G	DF HM 00	HWG-G	20 MIN.	47</		

DATE: 04-20-17 11:50:00 AM
DRAWN BY: JAGM
CHECKED BY: CJC
JOB NO: 17026
PROJECT: A NEW MARRIOTT HOTEL
SHEET TITLE: DOOR LEGENDS AND DETAILS
DRAWING NUMBER: A711

DOOR SCHEDULE - LEVEL 3									
DOOR No.	WIDTH	HEIGHT	DOOR PANEL	DOOR FRAME	HWG	FIRE RATING	STC RATING	COMMENTS/NOTES	
301.1	3'-0"	6'-8"	DP G	DF_HM_CO	HWG-G	20 MIN.	47	Guestroom Entrance door.	
301.2	3'-4"	6'-8"	DP F SD	DF_HM_CO	HWG-SD			Guestroom Sliding door, NT2	
301.3	3'-0"	6'-8"	DP F SD B	DF_HM_CO	HWG-SDB			Guestroom Bathroom sliding door, NT2.	
301.C	3'-0"	6'-8"	DP F	DF_HM_CO	HWG-DA	20 MIN.	47	Double acting Guestroom connecting door.	
302.1	3'-0"	6'-8"	DP G	DF_HM_CO	HWG-G	20 MIN.	47	Guestroom Entrance door.	
302.2	3'-4"	6'-8"	DP F SD	DF_HM_CO	HWG-SD			Guestroom sliding door, NT2.	
302.3	3'-0"	6'-8"	DP F	DF_HM_CO	HWG-GB			Guestroom bathroom hinged door, NT2.	
303.1	3'-0"	6'-8"	DP G	DF_HM_CO	HWG-G	20 MIN.	47	Guestroom Entrance door.	
303.2	3'-4"	6'-8"	DP F SD	DF_HM_CO	HWG-SD			Guestroom sliding door, NT2.	
303.3	3'-0"	6'-8"	DP F	DF_HM_CO	HWG-GB			Guestroom bathroom hinged door, NT2.	
304.1	3'-0"	6'-8"	DP G	DF_HM_CO	HWG-G	20 MIN.	47	Guestroom Entrance door.	
304.2	3'-4"	6'-8"	DP F SD	DF_HM_CO	HWG-SD			Guestroom sliding door, NT2.	
304.3	3'-0"	6'-8"	DP F	DF_HM_CO	HWG-GB			Guestroom bathroom hinged door, NT2.	
305.1	3'-0"	6'-8"	DP G	DF_HM_CO	HWG-G	20 MIN.	47	Guestroom Entrance door.	
305.2	3'-4"	6'-8"	DP F SD	DF_HM_CO	HWG-SD			Guestroom sliding door, NT2.	
305.3	3'-0"	6'-8"	DP F	DF_HM_CO	HWG-GB			Guestroom bathroom hinged door, NT2.	
306.1	3'-0"	6'-8"	DP G	DF_HM_CO	HWG-G	20 MIN.	47	Guestroom Entrance door.	
306.2	3'-4"	6'-8"	DP F SD	DF_HM_CO	HWG-SD			Guestroom sliding door, NT2.	
306.3	3'-0"	6'-8"	DP F	DF_HM_CO	HWG-GB			Guestroom bathroom hinged door, NT2.	
307.1	3'-0"	6'-8"	DP G	DF_HM_CO	HWG-G	20 MIN.	47	Guestroom Entrance door.	
307.2	3'-4"	6'-8"	DP F SD	DF_HM_CO	HWG-SD			Guestroom sliding door, NT2.	
307.3	3'-0"	6'-8"	DP F	DF_HM_CO	HWG-GB			Guestroom bathroom hinged door, NT2.	
308.1	3'-0"	6'-8"	DP G	DF_HM_CO	HWG-G	20 MIN.	47	Guestroom Entrance door.	
308.2	3'-4"	6'-8"	DP F SD	DF_HM_CO	HWG-SD			Guestroom sliding door, NT2.	
308.3	3'-0"	6'-8"	DP F	DF_HM_CO	HWG-GB			Guestroom bathroom hinged door, NT2.	
309.1	3'-0"	6'-8"	DP G	DF_HM_CO	HWG-G	20 MIN.	47	Guestroom Entrance door.	
309.2	3'-4"	6'-8"	DP F SD	DF_HM_CO	HWG-SD			Guestroom sliding door, NT2.	
309.3	3'-0"	6'-8"	DP F	DF_HM_CO	HWG-GB			Guestroom bathroom hinged door, NT2.	
310.1	3'-0"	6'-8"	DP G	DF_HM_CO	HWG-G	20 MIN.	47	Guestroom Entrance door.	
310.2	3'-4"	6'-8"	DP F SD	DF_HM_CO	HWG-SD			Guestroom sliding door, NT2.	
310.3	3'-0"	6'-8"	DP F SD B	DF_HM_CO	HWG-SDB			Guestroom Bathroom sliding door, NT2.	
310.C	3'-0"	6'-8"	DP F	DF_HM_CO	HWG-DA	45 MIN.	47	Double acting Guestroom connecting door.	
311.1	3'-0"	6'-8"	DP G	DF_HM_CO	HWG-G	20 MIN.	47	Guestroom Entrance door.	
311.2	3'-4"	6'-8"	DP F SD	DF_HM_CO	HWG-SD			Guestroom sliding door, NT2.	
311.3	3'-0"	6'-8"	DP F	DF_HM_CO	HWG-GB			Guestroom bathroom hinged door, NT2.	
312.1	3'-0"	6'-8"	DP G	DF_HM_CO	HWG-G	20 MIN.	47	Guestroom Entrance door.	
312.2	3'-4"	6'-8"	DP F SD	DF_HM_CO	HWG-SD			Guestroom sliding door, NT2.	
312.3	3'-0"	6'-8"	DP F	DF_HM_CO	HWG-GB			Guestroom bathroom hinged door, NT2.	
313.1	3'-0"	6'-8"	DP G	DF_HM_CO	HWG-G	20 MIN.	47	Guestroom Entrance door.	
313.2	3'-4"	6'-8"	DP F SD	DF_HM_CO	HWG-SD			Guestroom sliding door, NT2.	
313.3	3'-0"	6'-8"	DP F	DF_HM_CO	HWG-GB			Guestroom bathroom hinged door, NT2.	
314.1	3'-0"	6'-8"	DP G	DF_HM_CO	HWG-G	20 MIN.	47	Guestroom Entrance door.	
314.2	3'-4"	6'-8"	DP F SD	DF_HM_CO	HWG-SD			Guestroom sliding door, NT2.	
314.3	3'-0"	6'-8"	DP F	DF_HM_CO	HWG-GB			Guestroom bathroom hinged door, NT2.	
315.1	3'-0"	6'-8"	DP G	DF_HM_CO	HWG-G	20 MIN.	47	Guestroom Entrance door.	
315.2	3'-4"	6'-8"	DP F SD	DF_HM_CO	HWG-SD			Guestroom sliding door, NT2.	
315.3	3'-0"	6'-8"	DP F	DF_HM_CO	HWG-GB			Guestroom bathroom hinged door, NT2.	
316.1	3'-0"	6'-8"	DP G	DF_HM_CO	HWG-G	20 MIN.	47	Guestroom Entrance door.	
316.2	3'-4"	6'-8"	DP F SD	DF_HM_CO	HWG-SD			Guestroom sliding door, NT2.	
316.3	3'-0"	6'-8"	DP F	DF_HM_CO	HWG-GB			Guestroom bathroom hinged door, NT2.	
317.1	3'-0"	6'-8"	DP G	DF_HM_CO	HWG-G	20 MIN.	47	Guestroom Entrance door.	
317.2	3'-4"	6'-8"	DP F SD	DF_HM_CO	HWG-SD			Guestroom sliding door, NT2.	
317.3	3'-0"	6'-8"	DP F	DF_HM_CO	HWG-GB			Guestroom bathroom hinged door, NT2.	
318.1	3'-0"	6'-8"	DP G	DF_HM_CO	HWG-G	20 MIN.	47	Guestroom Entrance door.	
318.2	3'-4"	6'-8"	DP F SD	DF_HM_CO	HWG-SD			Guestroom sliding door, NT2.	
318.3	3'-0"	6'-8"	DP F	DF_HM_CO	HWG-GB			Guestroom bathroom hinged door, NT2.	
319.1	3'-0"	6'-8"	DP G	DF_HM_CO	HWG-G	20 MIN.	47	Guestroom Entrance door.	
319.2	3'-4"	6'-8"	DP F SD	DF_HM_CO	HWG-SD			Guestroom sliding door, NT2.	
319.3	3'-0"	6'-8"	DP F	DF_HM_CO	HWG-GB			Guestroom bathroom hinged door, NT2.	
320.1	3'-0"	6'-8"	DP G	DF_HM_CO	HWG-G	20 MIN.	47	Guestroom Entrance door.	
320.2	3'-4"	6'-8"	DP F SD	DF_HM_CO	HWG-SD			Guestroom sliding door, NT2.	
320.3	3'-0"	6'-8"	DP F	DF_HM_CO	HWG-GB			Guestroom bathroom hinged door, NT2.	
321.1	3'-0"	6'-8"	DP G	DF_HM_CO	HWG-G	20 MIN.	47	Guestroom Entrance door.	
321.2	3'-4"	6'-8"	DP F SD	DF_HM_CO	HWG-SD			Guestroom sliding door, NT2.	
321.3	3'-0"	6'-8"	DP F	DF_HM_CO	HWG-GB			Guestroom bathroom hinged door, NT2.	
322.1	3'-0"	6'-8"	DP G	DF_HM_CO	HWG-G	20 MIN.	47	Guestroom Entrance door.	
322.2	3'-4"	6'-8"	DP F SD	DF_HM_CO	HWG-SD			Guestroom sliding door, NT2.	
322.3	3'-0"	6'-8"	DP F	DF_HM_CO	HWG-GB			Guestroom bathroom hinged door, NT2.	
323.1	3'-0"	6'-8"	DP G	DF_HM_CO	HWG-G	20 MIN.	47	Guestroom Entrance door.	
323.2	3'-4"	6'-8"	DP F SD	DF_HM_CO	HWG-SD			Guestroom sliding door, NT2.	
323.3	3'-0"	6'-8"	DP F	DF_HM_CO	HWG-GB			Guestroom bathroom hinged door, NT2.	
324.1	3'-0"	6'-8"	DP G	DF_HM_CO	HWG-G	20 MIN.	47	Guestroom Entrance door.	
324.2	3'-4"	6'-8"	DP F SD	DF_HM_CO	HWG-SD			Guestroom sliding door, NT2.	
324.3	3'-0"	6'-8"	DP F	DF_HM_CO	HWG-GB			Guestroom bathroom hinged door, NT2.	
325.1	3'-0"	6'-8"	DP G	DF_HM_CO	HWG-G	20 MIN.	47	Guestroom Entrance door.	
325.2	3'-4"	6'-8"	DP F SD	DF_HM_CO	HWG-SD			Guestroom sliding door, NT2.	
325.3	3'-0"	6'-8"	DP F	DF_HM_CO	HWG-GB			Guestroom bathroom hinged door, NT2.	
326.1	3'-0"	6'-8"	DP G	DF_HM_CO	HWG-G	20 MIN.	47	Guestroom Entrance door.	
326.2	3'-4"	6'-8"	DP F SD	DF_HM_CO	HWG-SD			Guestroom sliding door, NT2.	
326.3	3'-0"	6'-8"	DP F	DF_HM_CO	HWG-GB			Guestroom bathroom hinged door, NT2.	
327.1	3'-0"	6'-8"	DP G	DF_HM_CO	HWG-G	20 MIN.	47	Guestroom Entrance door.	
327.2	3'-4"	6'-8"	DP F SD	DF_HM_CO	HWG-SD			Guestroom sliding door, NT2.	
327.3	3'-0"	6'-8"	DP F	DF_HM_CO	HWG-GB			Guestroom bathroom hinged door, NT2.	
329.1	3'-0"	6'-8"	DP G	DF_HM_CO	HWG-G	20 MIN.	47	Guestroom Entrance door.	
329.2	3'-4"	6'-8"	DP F SD	DF_HM_CO	HWG-SD			Guestroom sliding door, NT2.	
329.3	3'-0"	6'-8"	DP F	DF_HM_CO	HWG-GB			Guestroom bathroom hinged door, NT2.	
CH3	6'-0"	6'-8"	DP F	DF_HM_CO	HWG-C1	45 MIN.		Linen Chute room Door.	
EC3	6'-0"	6'-8"	DP F	DF_HM_CO	HWG-EL			Electrical Closet double doors.	
H3	3'-0"	6'-8"	DP F	DF_HM_CO	HWG-S1	20 MIN.		Service/Housekeeping door, NT2.	
S3	3'-0"	6'-8"	DP F	DF_HM_CO	HWG-S1	20 MIN.		Service/Housekeeping door.	
ST1.3	3'-0"	6'-8"	DP N	DF_HM_CO	HWG-ST	90 MIN.		Stair Entry door on hold open.	
ST2.3	3'-0"	6'-8"	DP N	DF_HM_CO	HWG-ST	90 MIN.		Stair Entry door on hold open.	
VT1.3	2'-3"	6'-8"	DP F	DF_HM_CO	HWG-S2			VTAC Closet.	
VC2.3	2'-3"	6'-8"	DP F	DF_HM_CO	HWG-S2			VTAC Closet.	

DOOR GENERAL NOTES:

- REFER TO SPECIFICATIONS FOR DOOR HARDWARE TYPES
- HAND-ACTIVATED DOOR OPENING HARDWARE SHALL BE CENTERED BETWEEN 34" AND 48" A.F.F. U.N.O.
- REFER TO SPECIFICATION SHEET A712 FOR FINISHES.
- DOOR CLOSER SWEEP PERIOD SHALL BE ADJUSTED SO THAT FROM THE OPEN POSITION OF 70 DEGREES THE DOOR WILL TAKE AT LEAST 3 SECONDS TO MOVE TO A POINT 3 INCHES FROM THE LATCH, MEASURED TO THE LEADING EDGE OF THE DOOR.
- THE MAXIMUM DOOR OPENING FORCE FOR PUSHING OR PULLING INTERIOR DOORS SHALL BE 5 POUNDS PER FOOT.
- ALL EXTERIOR DOORS ARE TO OPEN OUTWARD AND ARE TO BE SELF CLOSING.
- CLOSERS TO BE PARALLEL ARM STYLE WHERE APPLICABLE.
- DOOR FRAMES TO BE EQUIPPED W/ SILENCER BUTTONS UNLESS GASKETS ARE SPECIFIED.
- ALL EXTERIOR H.M. DOORS AND FRAMES SHALL BE INSULATED.
- FILL ALL VOIDS IN THRESHOLDS W/ SEALANT TO MATCH GROUT.
- SEE FFE ITEMS FOR SPECIALTY DOORS EXP-215 & EXP-216
- WHERE COAT HOOKS ARE INDICATED IN RESTROOMS AND BATHROOMS, LOCATE COAT HOOK CENTERED ON DOOR ON THE RESTROOMS AND BATHROOMS SIDE OF DOORS.

DOOR OPENING SCHEDULE SPECIFIC NOTES:

- NT1. SEE STORE FRONT ELEVATIONS FOR FRAME TYPES.
NT2. INCREASE TYPICAL DOOR UNDERCUT TO 1".
- DOOR OPENING FINISHES SCHEDULE:**
- ALL INTERIOR DOOR ARE TO BE SOLID CORE WOOD DOORS EXP-PL1 FINISHED ON ALL SIDES.
ALL INTERIOR HOLLOW METAL DOORS AND FRAMES ARE TO BE EXP-PT3 FINISHED.
ALL EXTERIOR SOLID CORE HOLLOW METAL DOORS AND FRAMES ARE TO BE EXP-PT3 FINISHED.
ALL ALUMINUM DOORS AND FRAMES ARE TO BE CLEAR ANODIZED ALUMINUM FINISHED.

ABBREVIATIONS USED IN THE DOOR OPENING SCHEDULES:

- AL = ALUMINUM
ADB = AUTOMATIC DOOR BOTTOM
ADO = AUTOMATIC DOOR OPERATOR
ASD = AUTOMATIC SLIDING DOOR
BLT = BORROWED LIGHT
CR = CARD READER FOR ADO AND ELECTRONIC LOCKS.
DE = DELAYED EGRESS OR DOUBLE EGRESS.
DF = DOOR FRAME
DP = DOOR PANEL
DR = DOOR
ELEV NO. = FRAME ELEVATION NUMBER.
GL = GLASS TYPE, SEE SPECIFICATION FOR TYPES.
HO = ELECTRO-MAGNETIC HOLD-OPEN DEVICE
HM = HOLLOW METAL
HWG = HARDWARE GROUP
MAG LOCK = MAGNETIC LOCK
MIN = DOOR RATING IN MINUTES.
NO. = NUMBER OR NUMBERS
NT = NOTE REFERENCE WITH NUMBER, SEE SPECIFIC NOTES.
OA = OVERALL
OH = OVERHEAD STOP TYPES
PP = PUSH PLATES FOR ADO
REV NO. = REVISION NUMBER CORRESPONDING TO THE DOCUMENTS BEING ISSUED
WD = WOOD DOOR, SEE ROOM FINISHES SCHEDULE FOR TYPES.
WS = WALL STOP

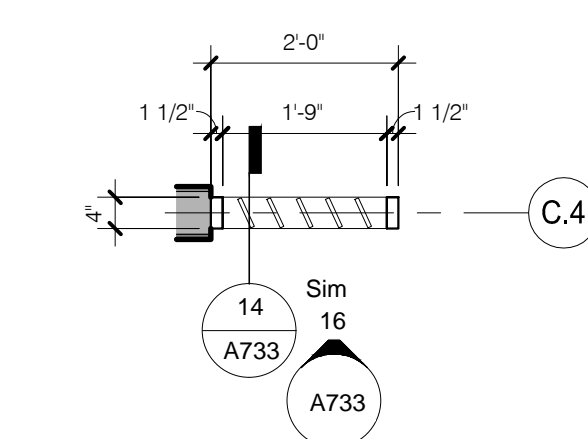
DOOR SCHEDULE - LEVEL 4									
DOOR No.	WIDTH	HEIGHT	DOOR PANEL	DOOR FRAME	HWG	FIRE RATING	STC RATING	COMMENTS/NOTES	
401.1	3'-0"	6'-8"	DP G	DF_HM_CO	HWG-G	20 MIN.	47	Guestroom Entrance door.	
401.2	3'-4"	6'-8"	DP F SD	DF_HM_CO	HWG-SD			Guestroom sliding door, NT2.	
401.3	3'-0"	6'-8"	DP F	DF_HM_CO	HWG-GB			Guestroom bathroom hinged door, NT2.	
402.1	3'-0"	6'-8"	DP G	DF_HM_CO	HWG-G	20 MIN.	47	Guestroom Entrance door.	
402.2	3'-4"	6'-8"	DP F SD	DF_HM_CO	HWG-SD			Guestroom sliding door, NT2.	
402.3	3'-0"	6'-8"	DP F	DF_HM_CO	HWG-GB			Guestroom bathroom hinged door, NT2.	
403.1	3'-0"	6'-8"	DP G	DF_HM_CO	HWG-G	20 MIN.	47	Guestroom Entrance door.	
403.2	3'-4"	6'-8"	DP F SD	DF_HM_CO	HWG-SD			Guestroom sliding door, NT2.	
403.3	3'-0"	6'-8"	DP F	DF_HM_CO	HWG-GB			Guestroom bathroom hinged door, NT2.	
404.2	3'-4"	6'-8"	DP F SD	DF_HM_CO	HWG-SD			Guestroom sliding door, NT2.	
404.3	3'-0"	6'-8"	DP F	DF_HM_CO	HWG-GB			Guestroom bathroom hinged door, NT2.	
405.1	3'-0"	6'-8"	DP G	DF_HM_CO	HWG-G	20 MIN.	47	Guestroom Entrance door.	
405.2	3'-4"	6'-8"	DP F SD	DF_HM_CO	HWG-SD			Guestroom sliding door, NT2.	
405.3	3'-0"	6'-8"	DP F	DF_HM_CO	HWG-GB			Guestroom bathroom hinged door, NT2.	
406.1	3'-0"	6'-8"	DP G	DF_HM_CO	HWG-G	20 MIN.	47	Guestroom Entrance door.	
406.2	3'-4"	6'-8"	DP F SD	DF_HM_CO	HWG-SD			Guestroom sliding door, NT2.	
406.3	3'-0"	6'-8"	DP F	DF_HM_CO	HWG-GB			Guestroom bathroom hinged door, NT2.	
407.1	3'-0"	6'-8"	DP G	DF_HM_CO	HWG-G	20 MIN.	47	Guestroom Entrance door.	
407.2	3'-4"	6'-8"	DP F SD	DF_HM_CO	HWG-SD			Guestroom sliding door, NT2.	
407.3	3'-0"	6'-8"	DP F	DF_HM_CO	HWG-GB			Guestroom bathroom hinged door, NT2.	
408.1	3'-0"	6'-8"	DP G	DF_HM_CO	HWG-G	20 MIN.	47	Guestroom Entrance door.	
408.2	3'-4"	6'-8"	DP F SD	DF_HM_CO	HWG-SD			Guestroom sliding door, NT2.	
408.3	3'-0"	6'-8"	DP F	DF_HM_CO	HWG-GB			Guestroom bathroom hinged door, NT2.	
409.1	3'-0"	6'-8"	DP G	DF_HM_CO	HWG-G	20 MIN.	47	Guestroom Entrance door.	
409.2	3'-4"	6'-8"	DP F SD	DF_HM_CO	HWG-SD			Guestroom sliding door, NT2.	
409.3	3'-0"	6'-8"	DP F	DF_HM_CO	HWG-GB			Guestroom bathroom hinged door, NT2.	
410.1	3'-0"	6'-8"	DP G	DF_HM_CO	HWG-G	20 MIN.	47	Guestroom Entrance door.	
410.2	3'-4"	6'-8"	DP F SD	DF_HM_CO	HWG-SD			Guestroom sliding door, NT2.	
410.3	3'-0"	6'-8"	DP F	DF_HM_CO	HWG-GB			Guestroom bathroom hinged door, NT2.	
411.1	3'-0"	6'-8"	DP G	DF_HM_CO	HWG-G	20 MIN.	47	Guestroom Entrance door.	
411.2	3'-4"	6'-8"	DP F SD	DF_HM_CO	HWG-SD			Guestroom sliding door, NT2.	
411.3	3'-0"	6'-8"	DP F	DF_HM_CO	HWG-GB			Guestroom bathroom hinged door, NT2.	
412.1	3'-0"	6'-8"	DP G	DF_HM_CO	HWG-G	20 MIN.	47	Guestroom Entrance door.	
412.2	3'-4"	6'-8"	DP F SD	DF_HM_CO	HWG-SD			Guestroom sliding door, NT2.	
412.3	3'-0"	6'-8"	DP F	DF_HM_CO	HWG-GB			Guestroom bathroom hinged door, NT2.	
413.1	3'-0"	6'-8"	DP G	DF_HM_CO	HWG-G	20 MIN.	47	Guestroom Entrance door.	
413.2	3'-4"	6'-8"	DP F SD	DF_HM_CO	HWG-SD			Guestroom sliding door, NT2.	
413.3	3'-0"	6'-8"	DP F	DF_HM_CO	HWG-GB			Guestroom bathroom hinged door, NT2.	
414.1	3'-0"	6'-8"	DP G	DF_HM_CO	HWG-G	20 MIN.	47	Guestroom Entrance door.	
414.2	3'-4"	6'-8"	DP F SD	DF_HM_CO	HWG-SD			Guestroom sliding door, NT2.	
414.3	3'-0"	6'-8"	DP F	DF_HM_CO	HWG-GB			Guestroom bathroom hinged door, NT2.	
415.1	3'-0"	6'-8"	DP G	DF_HM_CO	HWG-G	20 MIN.	47	Guestroom Entrance door.	
415.2	3'-4"	6'-8"	DP F SD	DF_HM_CO	HWG-SD			Guestroom sliding door, NT2.</	

EXP-WD1 FINISHED WOOD SLAT SCREEN AND PLYWOOD CENTER PANEL. SEE A733/17 DETAIL.

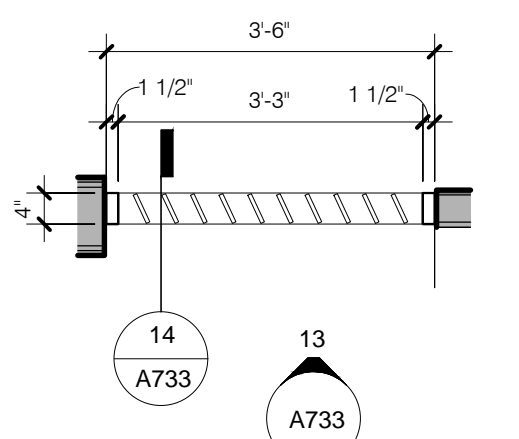
EXP-WD1 FINISHED SLAT SCREEN BLADES.
 BLADE PATTERN LEFT TO RIGHT: A, B, C, D AND E.
 SEE A733/17 DETAIL.

EXP-WD1 FINISHED SLAT SCREEN BLADES.
 BLADE PATTERN LEFT TO RIGHT: A, B, C, D, E,
 F, A, B, C AND D.
 SEE A733/17 DETAIL.

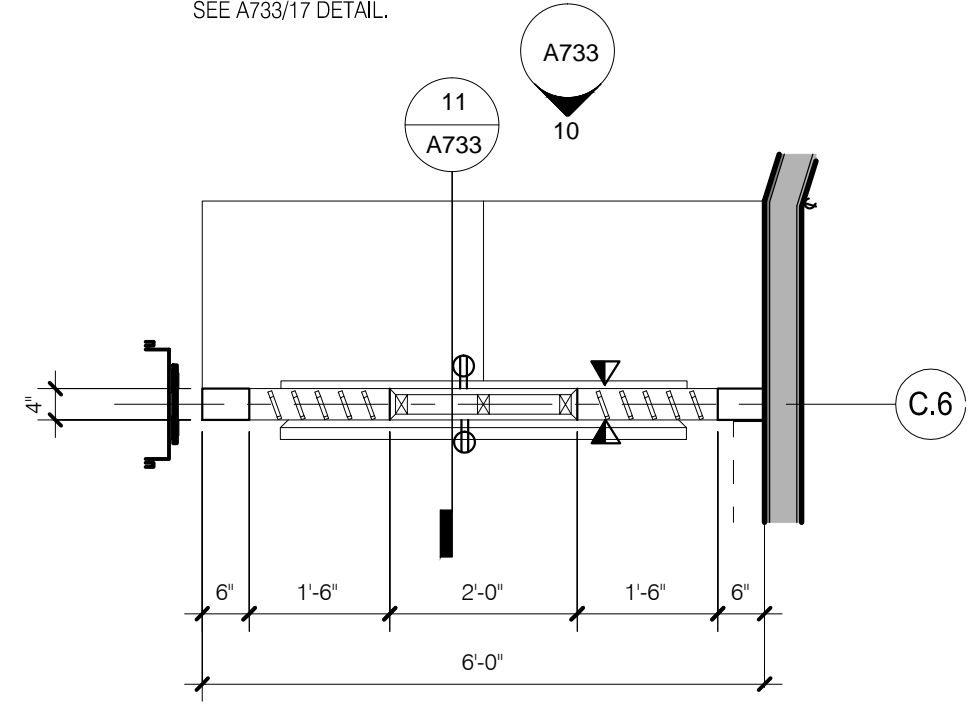
EXP-WD1 FINISHED SLAT SCREEN BLADES.
 BLADE PATTERN RIGHT TO LEFT: A, B, C, D AND E.
 SOLID WOOD PANEL, A, B, C, D AND E.
 SEE A733/17 DETAIL.



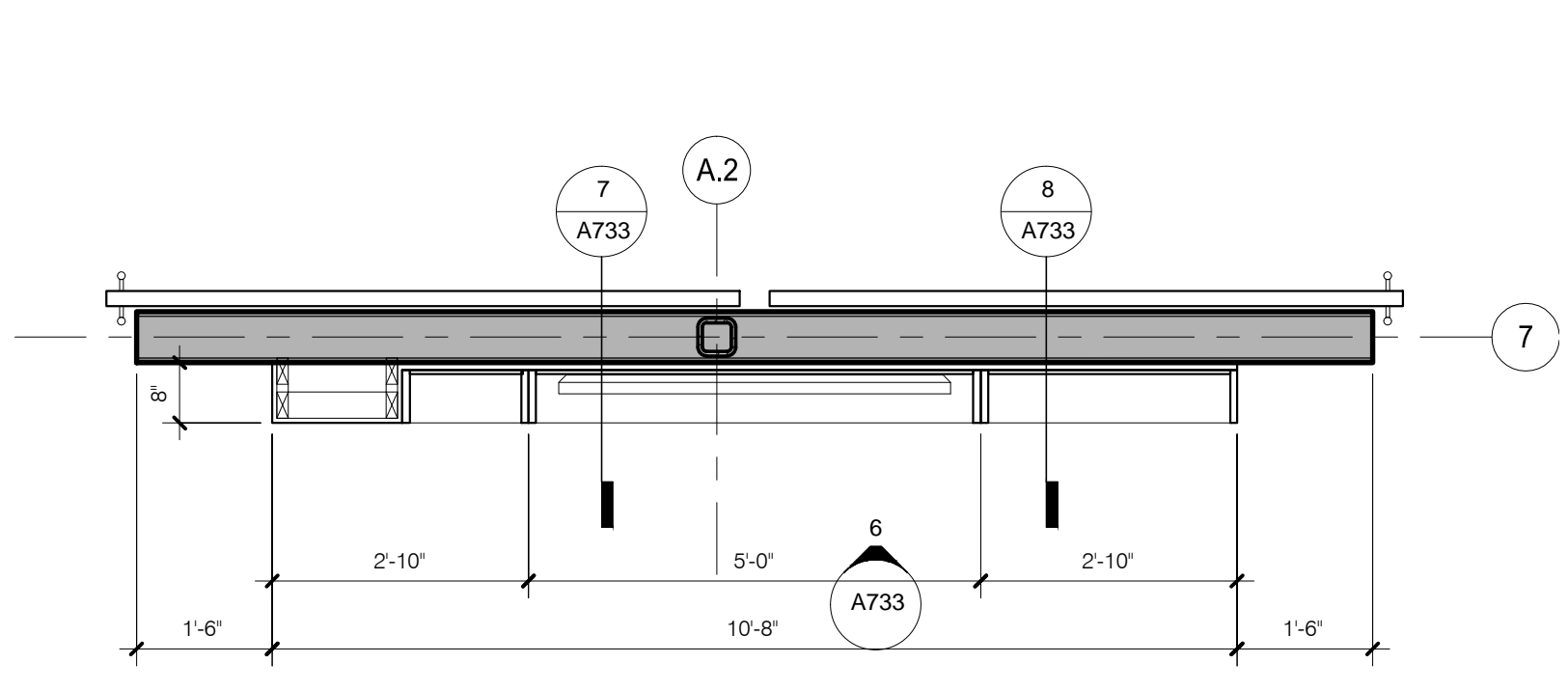
15 LOUNGE_SCREEN 2 @ MARKET PLAN
1/2" = 1'-0"



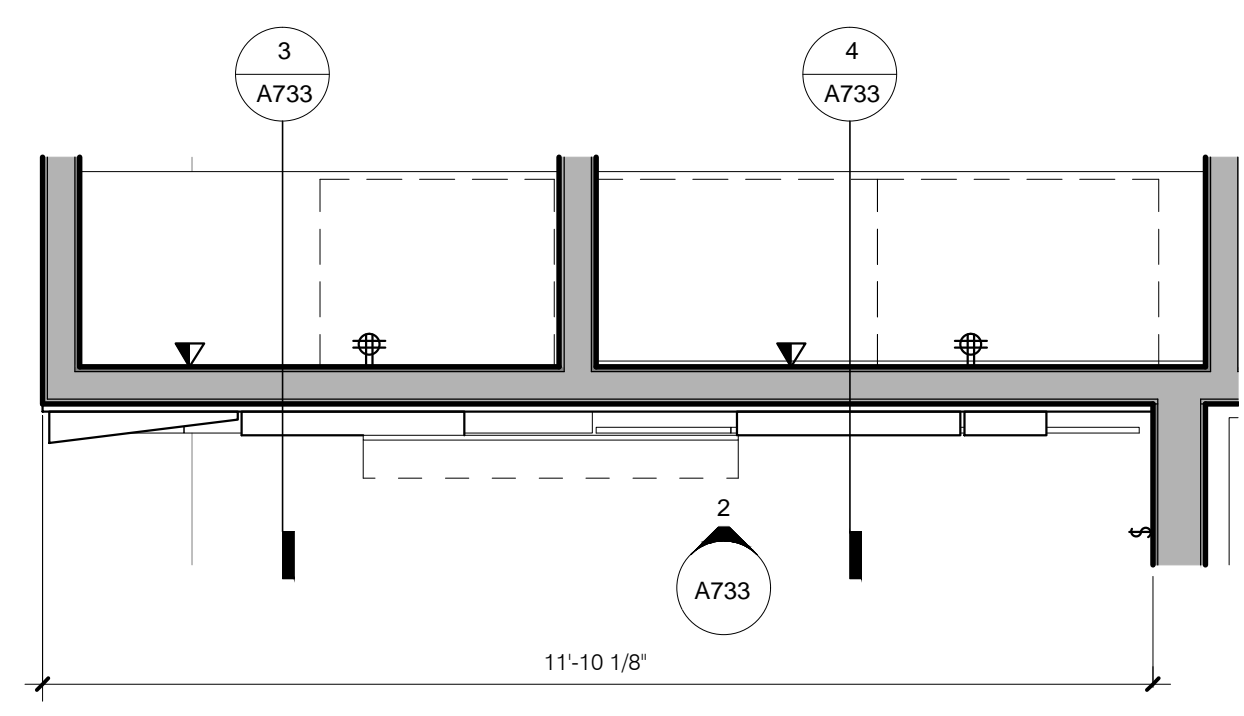
12 LOUNGE_SCREEN 1 @ MARKET PLAN
1/2" = 1'-0"



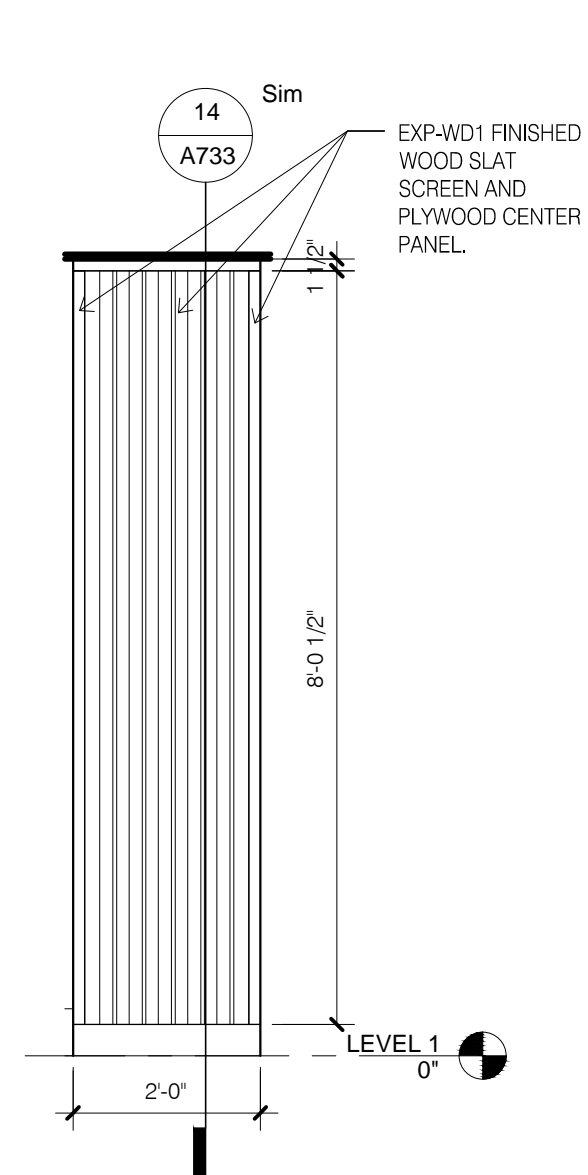
9 BUSINESS_TV_SCREEN_WALL_PLAN
1/2" = 1'-0"



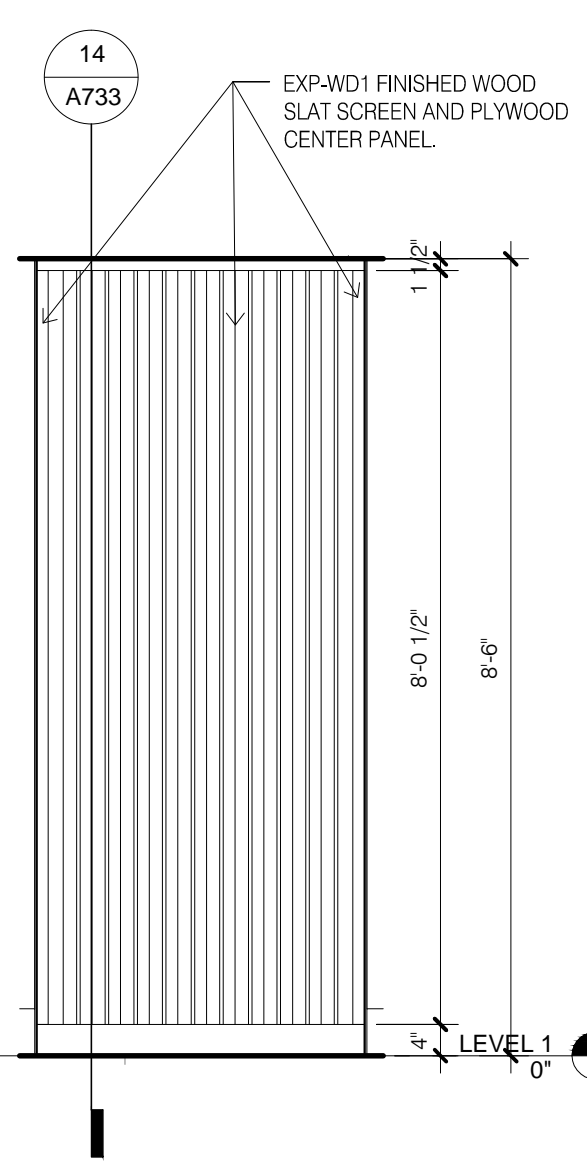
5 ENLARGED_TV_FEATURE_WALL_PLAN
1/2" = 1'-0"



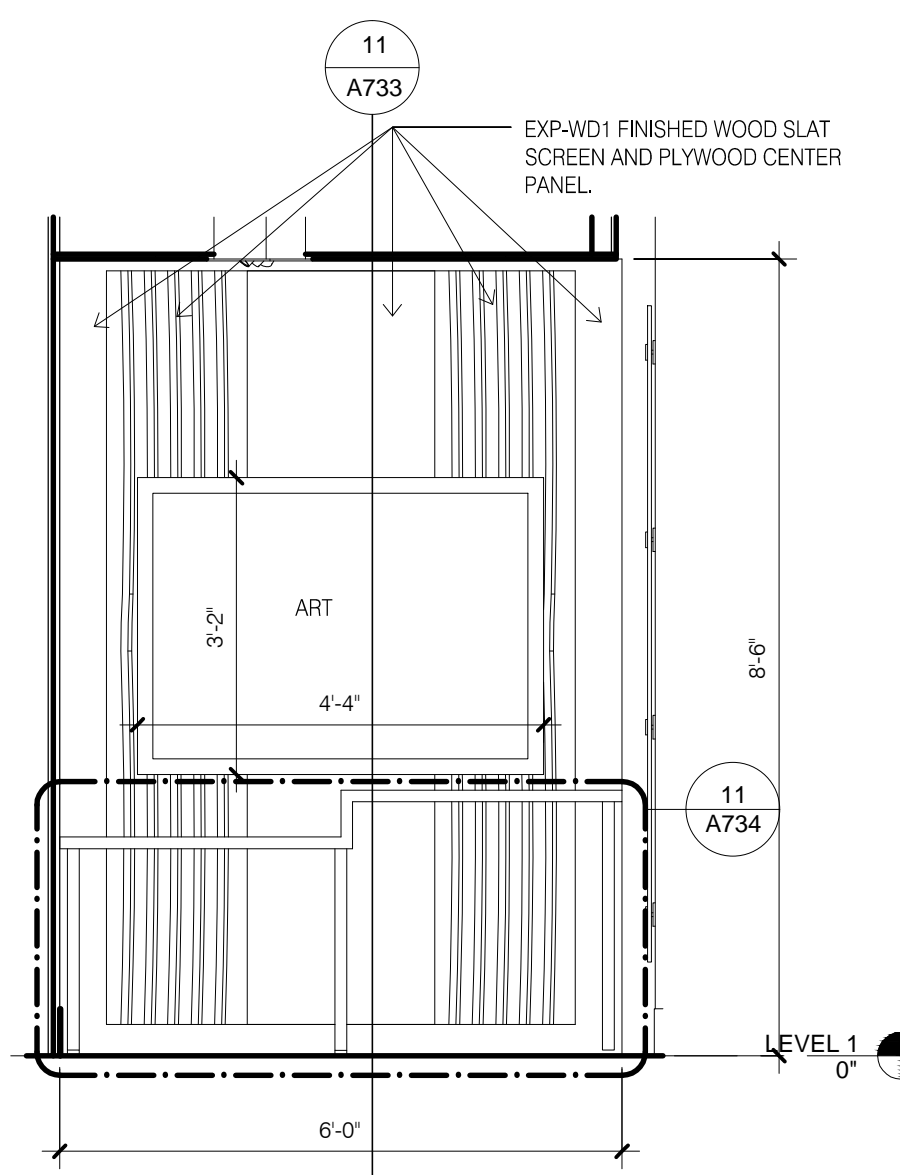
1 ENLARGED_CHECK-IN_WALL_PLAN
1/2" = 1'-0"



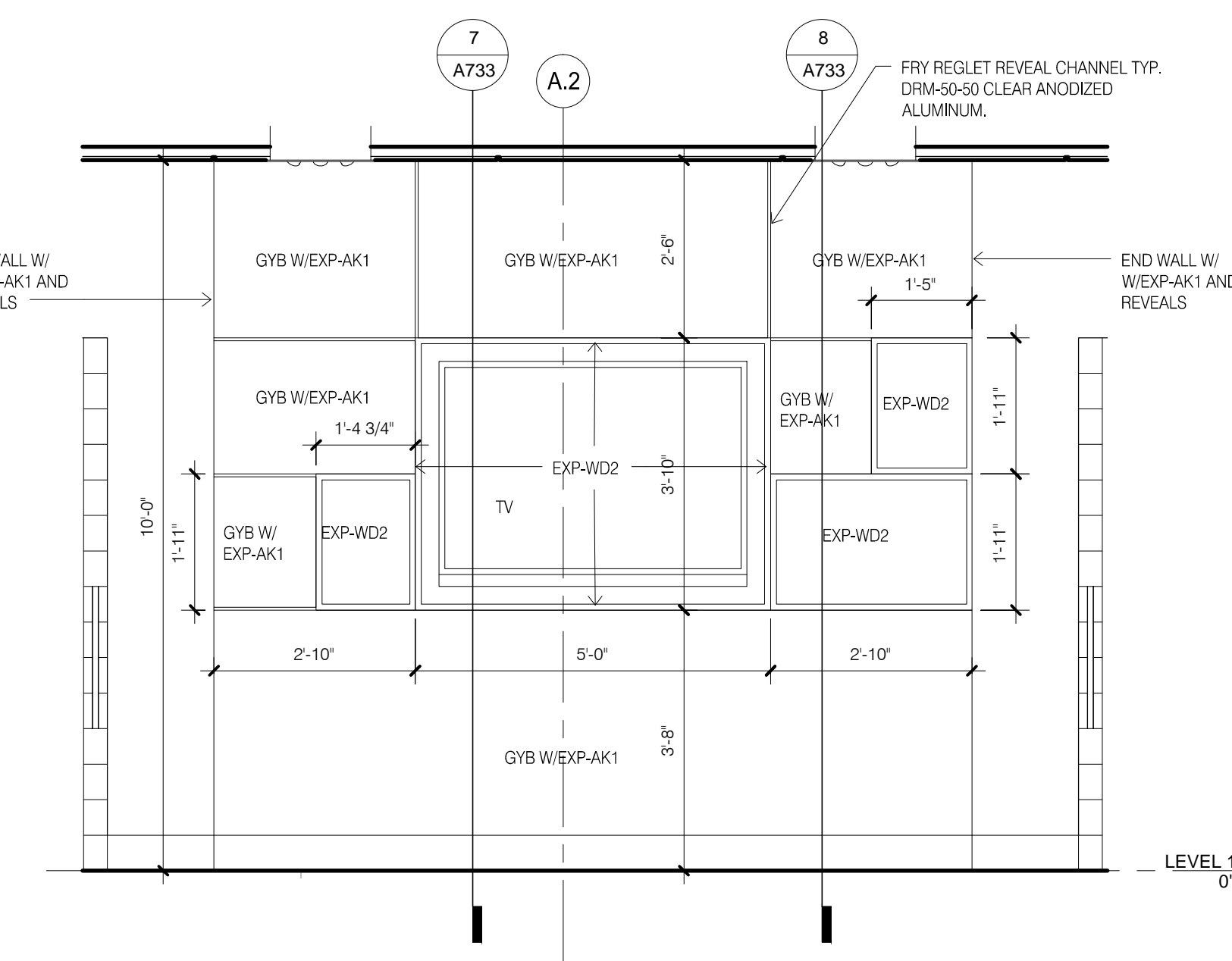
16 SCREEN 2 @ MARKET ELEVATION
1/2" = 1'-0"



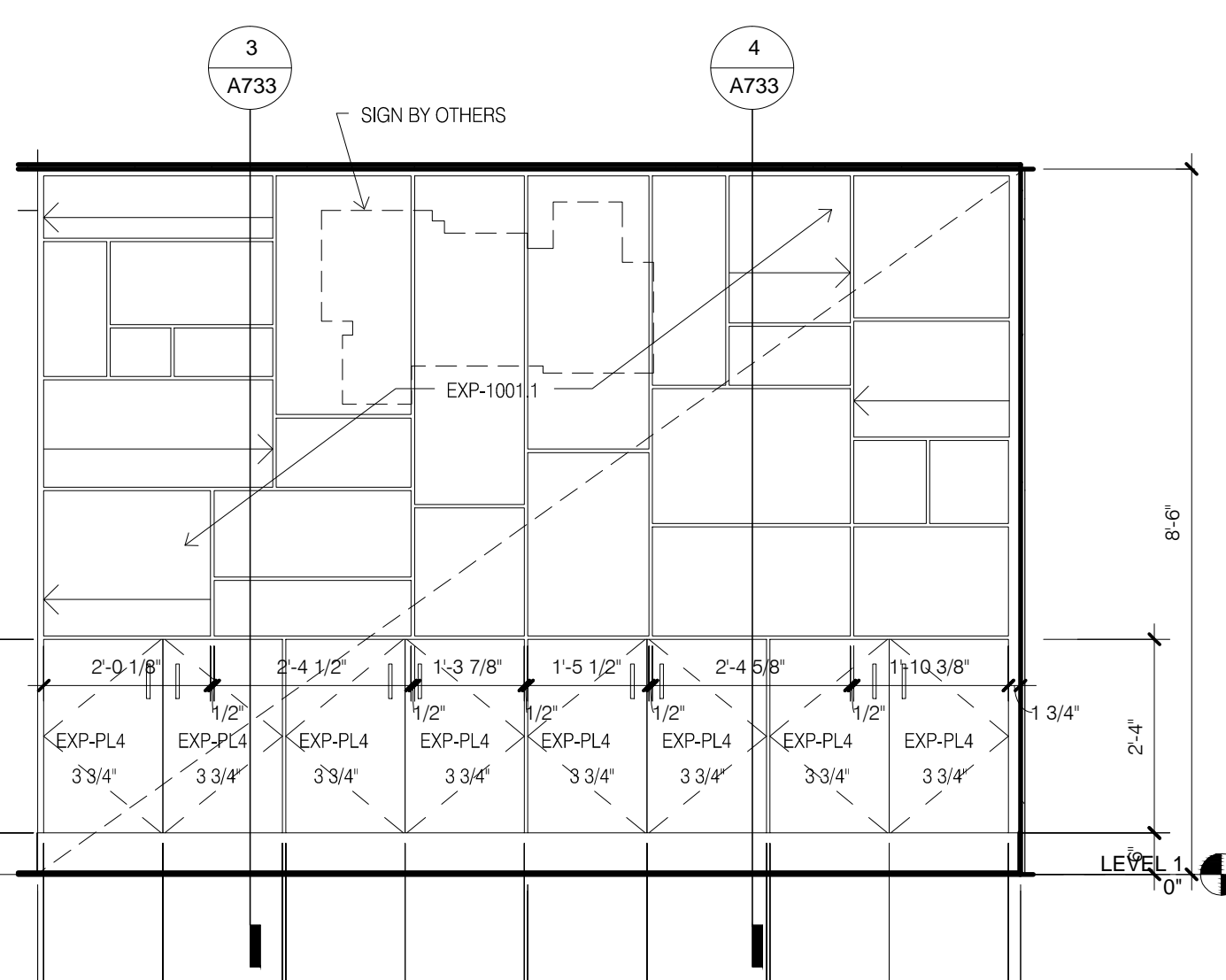
13 SCREEN 1 @ MARKET ELEVATION
1/2" = 1'-0"



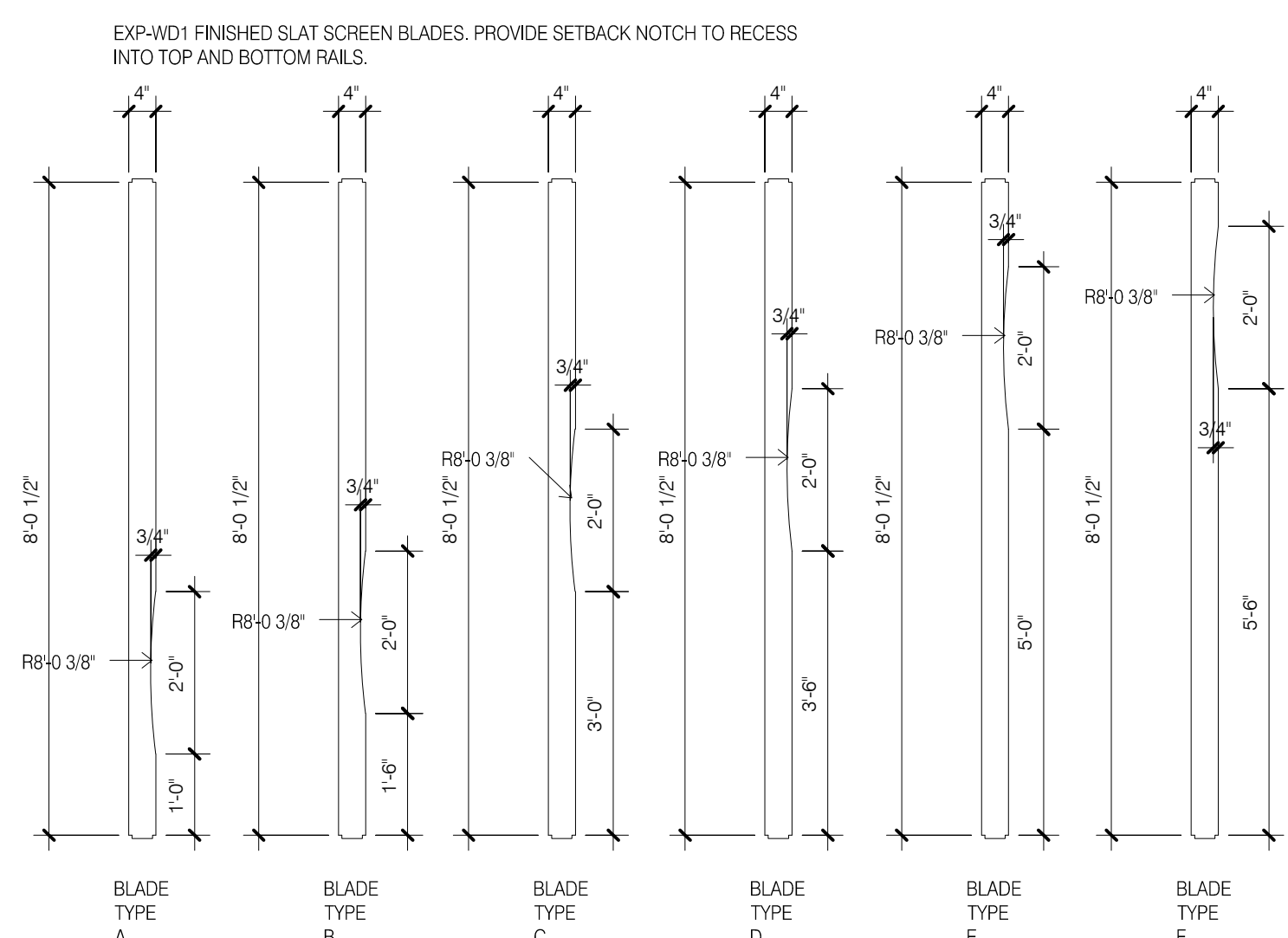
10 BUSINESS_SCREEN_ELEVATION
1/2" = 1'-0"



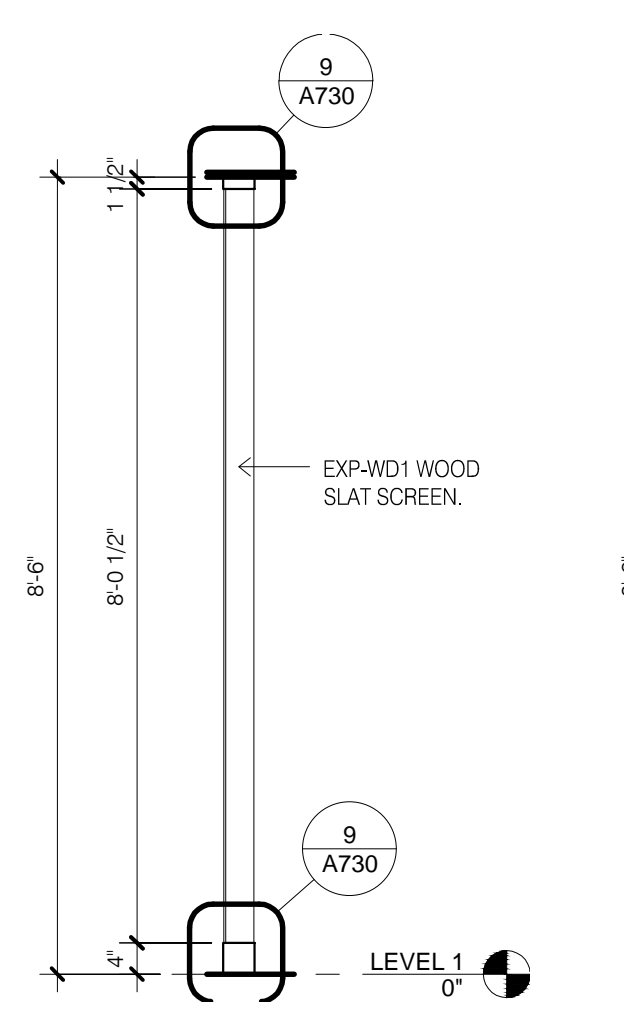
6 TV_FEATURE_WALL_ELEVATION
1/2" = 1'-0"



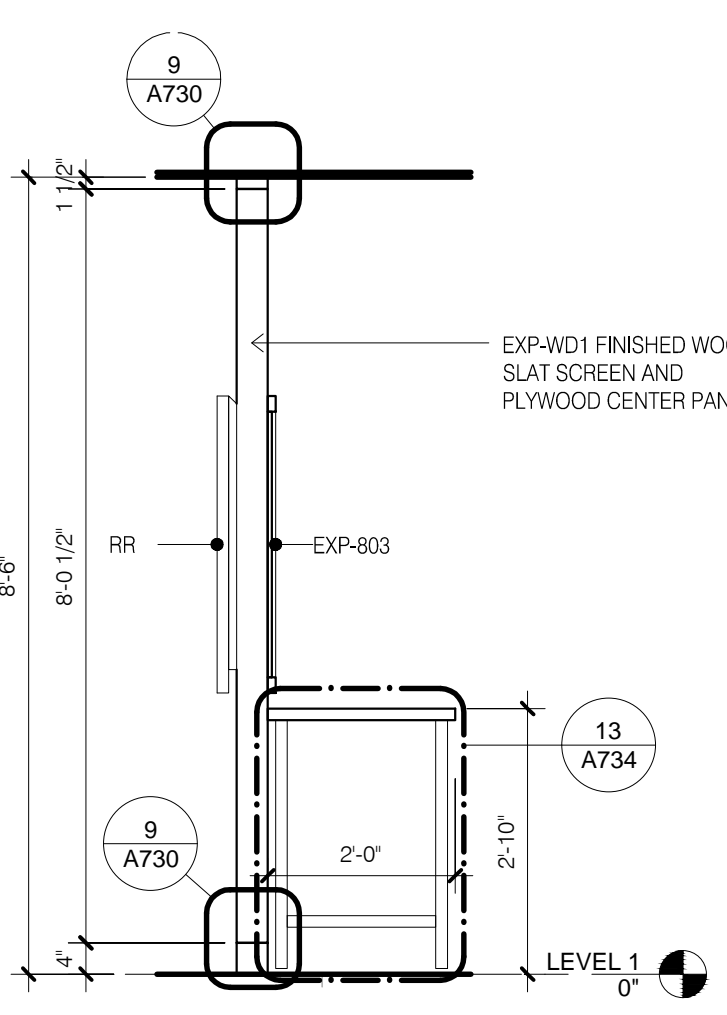
2 ENLARGED_CHECK-IN_WALL_ELEVATION
1/2" = 1'-0"



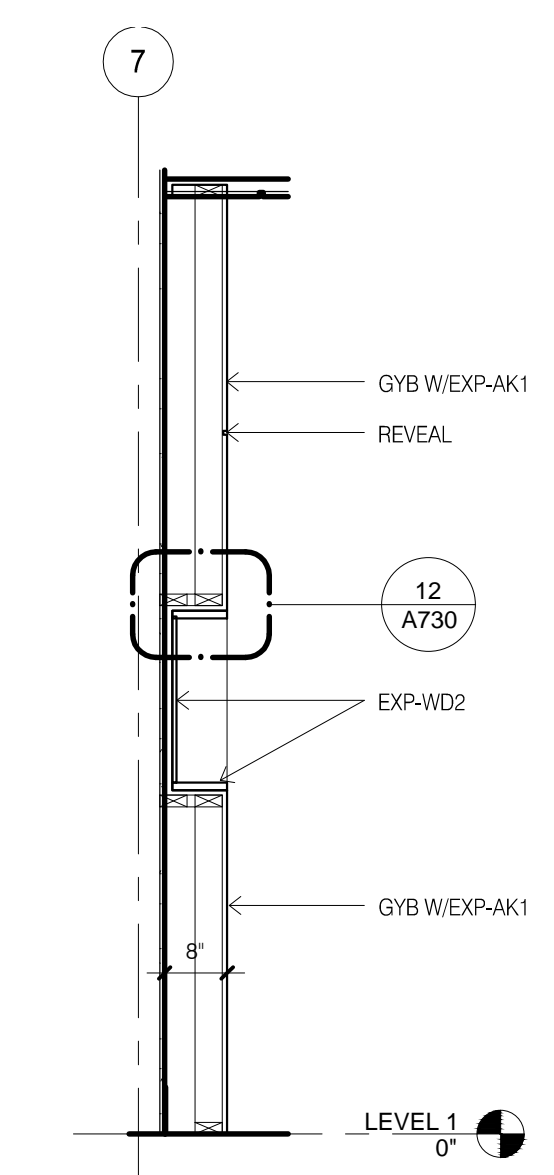
17 LOUNGE_SCREEN_BLADES
1/2" = 1'-0"



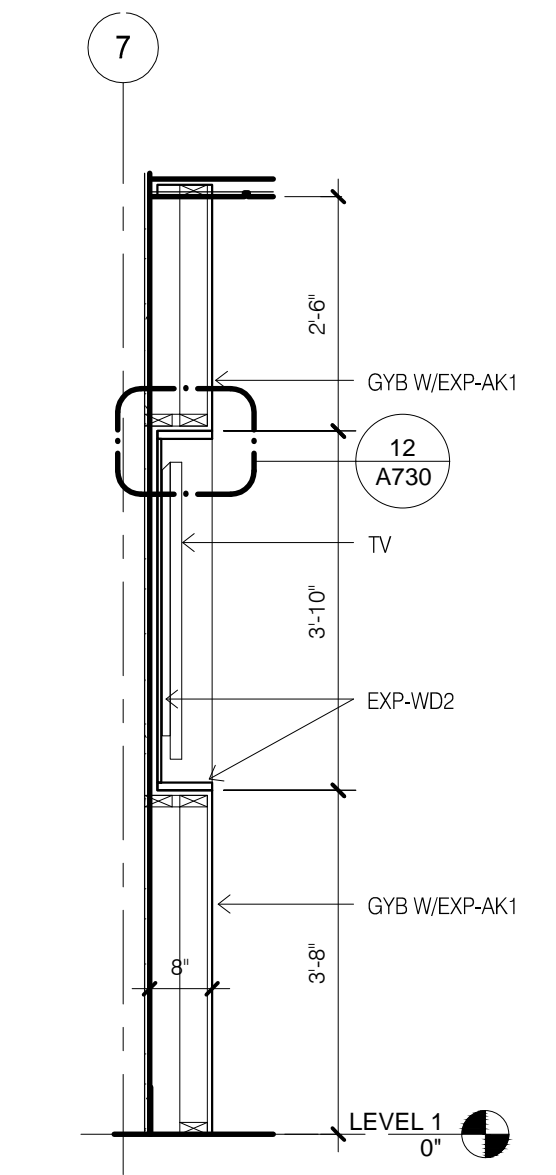
14 LOUNGE_SCREEN 1 SECTION
1/2" = 1'-0"



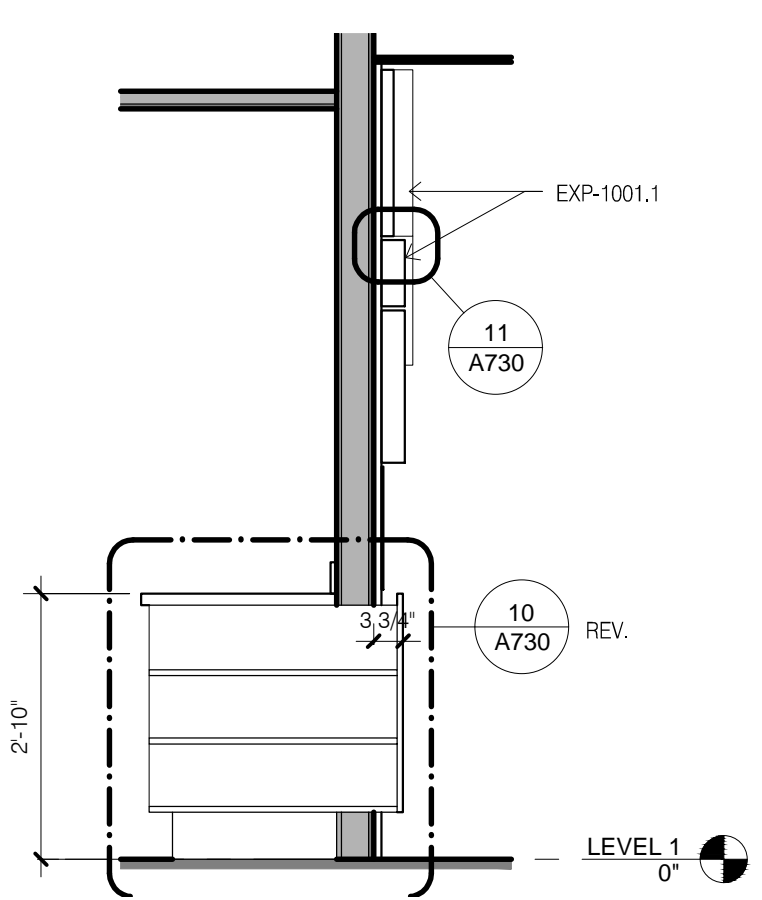
11 BUSINESS_DIVIDER_WALL_SECTION2
1/2" = 1'-0"



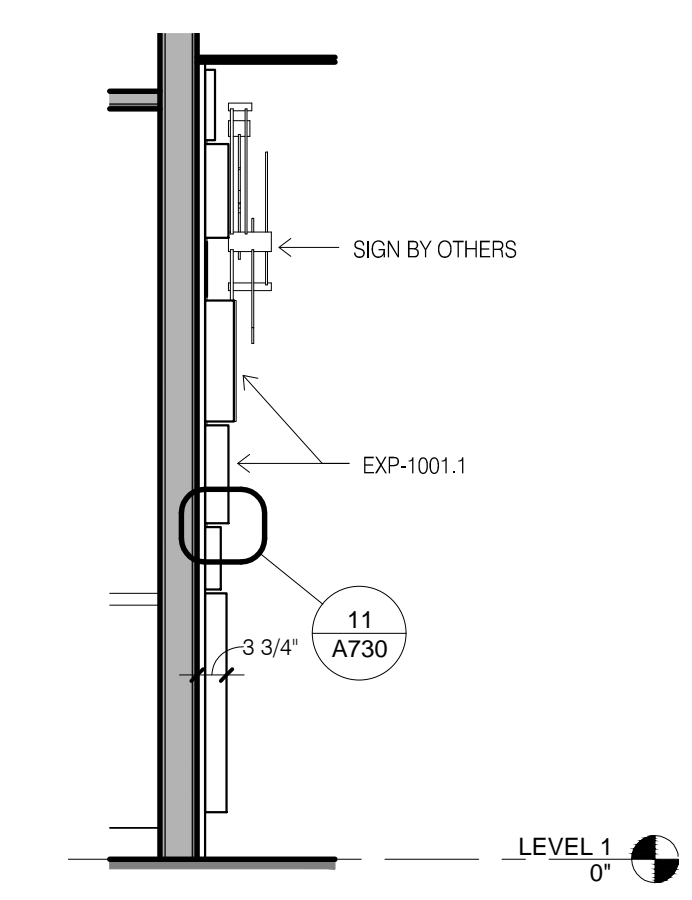
8 TV_FEATURE_WALL_SECTION 2
1/2" = 1'-0"



7 TV_FEATURE_WALL_SECTION 1
1/2" = 1'-0"



4 CHECK-IN_WALL_SECTION 2
1/2" = 1'-0"



3 NOT_USED
1/2" = 1'-0"

DAMMON ENGINEERING, INC.
 LOUISIANA & MISSISSIPPI
 www.dammonengineering.com
 info@dammonengineering.com
 Chief Engineer: Brian Mitchell, PE
 554 Old Spanish Trail
 Slidell, LA 70458
 PH: 985.649.5832

#	DESCRIPTION	DATE

SEAL: _____
 DATE: _____

A NEW MARRIOTT HOTEL
TOWNE PLACE SUITES
 MICHELE D'ISIA
 LOT A-143B
 DENHAM SPRINGS, LA 70726
 JOB No: 2130 DATE: 04-20-17
 DRAWN BY: JAGM CHECKED BY: CKD

SHEET TITLE:
CHECK-IN LIFESTYLE LOUNGE DETAILS
 DRAWING NUMBER:
A733
 SHEET No: _____ of 93

