

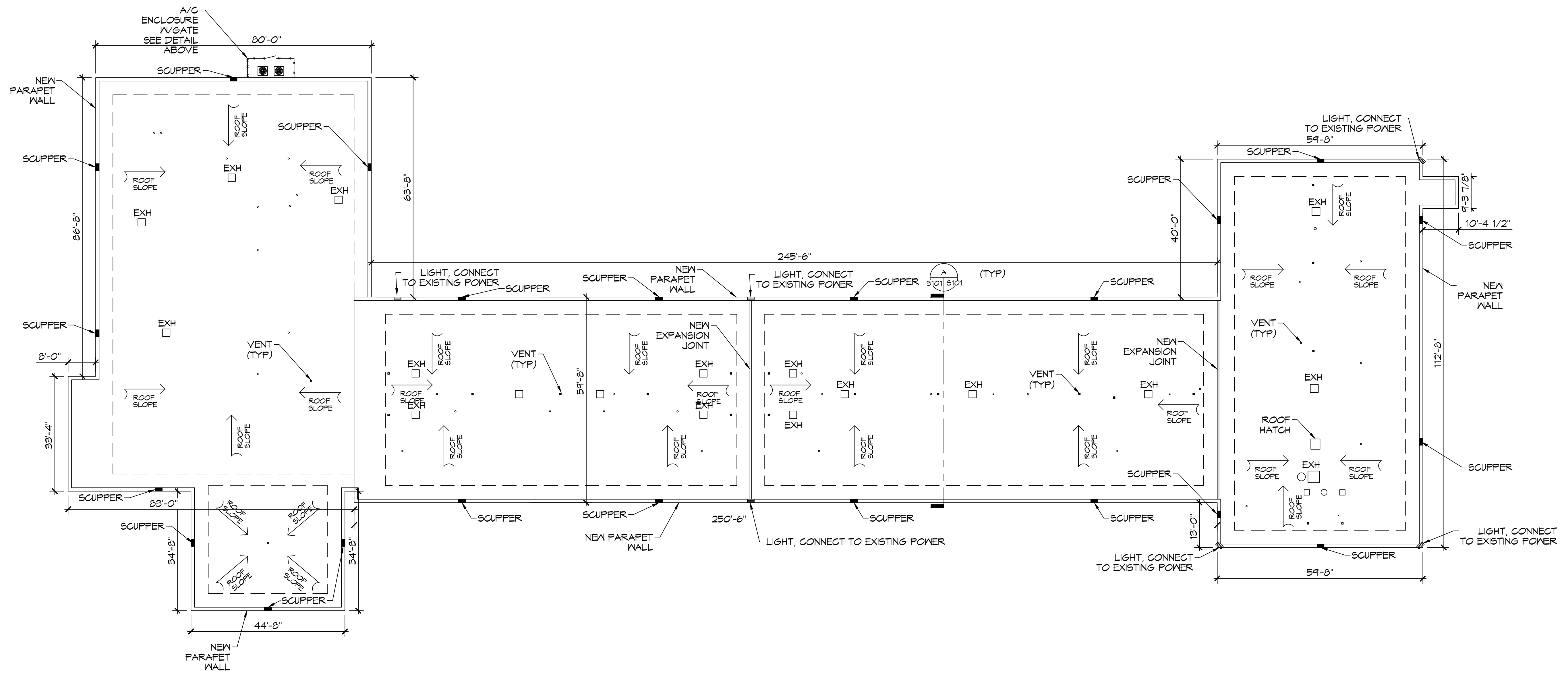
INSTALLATION ON METAL DECK OVER DROP OFF AND LOBBY

1. LOOSE LAY A 2'X48'X96" ISO95+GL INSULATION BOARD ON THE METAL DECK.
2. MECHANICALLY ATTACH A 2' X48'X96" ISO95+GL INSULATION BOARD THROUGH THE FIRST LAYER OF ISO TO THE METAL DECK. PER THE 48'X96" BOARD, THE ATTACHMENT RATE TO BE 20 HEAVY DUTY FASTENERS AND PLATES IN THE FIELD; 32 IN THE PERIMETERS AND CORNERS.
3. ADHERE A 1/8" X48'X48" TAPERED ISO95+GL INSULATION BOARD TO THE SECOND LAYER OF ISO WITH ISO SPRAY R LOW-RISE FOAM ADHESIVE. ADHESIVE RATE TO BE 4" O.C. EVERYWHERE.
4. ADHERE A 1/2" X48'X48" SECURROCK GYPSUM FIBER COVERBOARD BOARD TO THE SECOND LAYER OF ISO WITH ISO SPRAY R LOW-RISE FOAM ADHESIVE. ADHESIVE RATE TO BE 4" O.C. EVERYWHERE.
5. ADHERE A 60 MIL ULTRAPLY TPO MEMBRANE TO THE COVERBOARD WITH LVOC ULTRAPLY BONDING ADHESIVE.
6. PROVIDE RETROFIT KITS IN THE EXISTING DRAIN BOWLS.
7. TERMINATE ROOF MEMBRANE AT WALL AND SECURE TO WALL AT 12" O.C.
8. ADHERE A 60 MIL ULTRAPLY TPO MEMBRANE TO THE 3/4" PLYWOOD AT PARAPETS WITH ULTRAPLY BONDING ADHESIVE. ENSURE MEMBRANE GOES UP AND OVER PARAPET AND DOWN OUTSIDE FACE OF WALL.
9. INSTALL ELEVATES GANTLEVER COPING ON TOP OF PARAPET TO COMPLETE THE INSTALLATION.
10. INSTALL SCUPPERS WITH ROOF DRAINS.

INSTALLATION ON CONCRETE DECK

1. SCRAPE AND CLEAN OFF STRUCTURAL CONCRETE DECK.
2. ADHERE A 2'X48'X48" ISO95+GL INSULATION BOARD TO THE STRUCTURAL CONCRETE DECK WITH ISO SPRAY R LOW-RISE FOAM ADHESIVE. ADHESIVE RATE TO BE 4" O.C. EVERYWHERE.
3. ADHERE A 2' X48'X48" ISO95+GL INSULATION BOARD TO THE FIRST LAYER OF ISO WITH ISO SPRAY R LOW-RISE FOAM ADHESIVE. ADHESIVE RATE TO BE 4" O.C. EVERYWHERE.
4. ADHERE A 1/8" X48'X48" TAPERED ISO95+GL INSULATION BOARD TO THE SECOND LAYER OF ISO WITH ISO SPRAY R LOW-RISE FOAM ADHESIVE. ADHESIVE RATE TO BE 4" O.C. EVERYWHERE.
5. ADHERE A 1/2" X48'X48" SECURROCK GYPSUM FIBER COVERBOARD BOARD TO THE SECOND LAYER OF ISO WITH ISO SPRAY R LOW-RISE FOAM ADHESIVE. ADHESIVE RATE TO BE 4" O.C. EVERYWHERE.
6. ADHERE A 60 MIL ULTRAPLY TPO MEMBRANE TO THE COVERBOARD WITH LVOC ULTRAPLY BONDING ADHESIVE.
7. PROVIDE RETROFIT KITS IN THE EXISTING DRAIN BOWLS.
8. TERMINATE ROOF MEMBRANE AT WALL AND SECURE TO WALL AT 12" O.C.
9. ADHERE A 60 MIL ULTRAPLY TPO MEMBRANE TO THE 3/4" PLYWOOD AT PARAPETS WITH ULTRAPLY BONDING ADHESIVE. ENSURE MEMBRANE GOES UP AND OVER PARAPET AND DOWN OUTSIDE FACE OF WALL.
10. INSTALL ELEVATES GANTLEVER COPING ON TOP OF PARAPET TO COMPLETE THE INSTALLATION.
11. INSTALL SCUPPERS WITH ROOF DRAINS.

A/C ENCLOSURE
SCALE: N.T.S.



NEW ROOF PLAN
SCALE: 1/16" = 1'-0"

DAMMON ENGINEERING, INC.
LOUISIANA & MISSISSIPPI
Chief Engineer: Brian March, PE
554 Old Spanish Trail
Stell, LA 70458
www.dammonengineering.com
info@dammonengineering.com
PH: 985.649.8832

#	DESCRIPTION	DATE

SEAL:

NEW PARTIAL RENOVATION
RED ROOF INN
1662 GAUGE BLVD.
SLPELL, LA 70458
JOB No: 2481 DATE: 11-07-2023
DRAWN BY: CKD CHECKED BY: JMS

SHEET TITLE:
NEW ROOF PLAN
DRAWING NUMBER:
A101
SHEET No: 3 of 10