

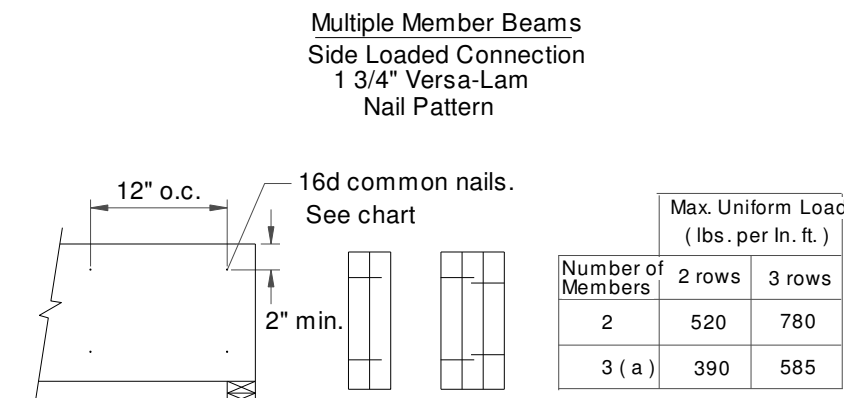
Builder must check correctness of this drawing PRIOR to erection of system. This drawing is conceptual and should be used with the Architectural plans to insure proper joist and beam placement. Stairways may be drawn small to allow for adjustments in the field.

BEARING WALLS AND POINT LOADS FROM FLOORS ABOVE DIRECTLY EFFECT SLAB OR FLOORS BELOW AND SHOULD BE ADDRESSED PRIOR TO INSTALLATION OF SLAB OR FLOORS BELOW IF NOT DIRECTLY ADDRESSED IN THESE LAYOUTS!!!!!!

Symbols for reference only. Framer to verify fixture locations for proper joist adjustments.

Accessory Schedule				
Tag	Qty	Manufacturer	Product	Description
H1	342	Simpson Strong-Tie, Inc.	ITS1.81/16	

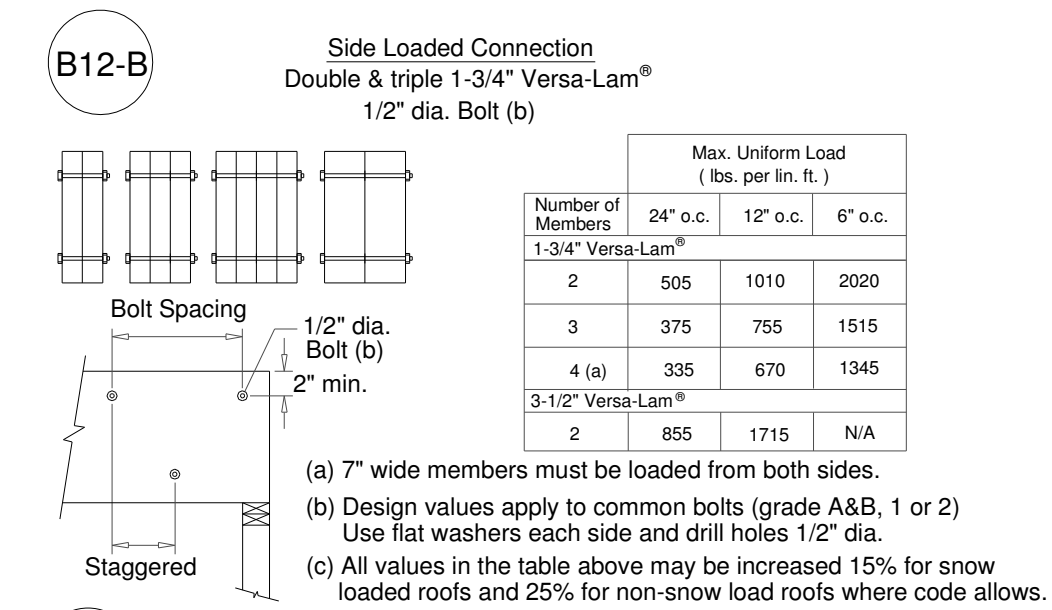
Framing Schedule - Nominalized				
Tag	Qty	Product	Length	
1	85	16" BCI@ 4500s-1.8 SP	28' 0"	
2	98	16" BCI@ 4500s-1.8 SP	26' 0"	
3	68	16" BCI@ 4500s-1.8 SP	24' 0"	
4	44	16" BCI@ 4500s-1.8 SP	22' 0"	
5	28	16" BCI@ 4500s-1.8 SP	18' 0"	
6	7	16" BCI@ 4500s-1.8 SP	16' 0"	
7	46	16" BCI@ 4500s-1.8 SP	14' 0"	
8	60	16" BCI@ 4500s-1.8 SP	12' 0"	
9	17	16" BCI@ 4500s-1.8 SP	10' 0"	
10	9	1-3/4" x 11-7/8" VERSA-LAM@ 2.0 3100 SP	14' 0"	
11	32	1-3/4" x 16" VERSA-LAM@ 2.0 3100 SP	22' 0"	
12	4	1-3/4" x 16" VERSA-LAM@ 2.0 3100 SP	10' 0"	
13	2	1-3/4" x 16" VERSA-LAM@ 2.0 3100 SP	4' 0"	
14	2	Steel beam by Others	28' 0"	
15	187	TRIM JOIST	8' 0"	
16	BLK	1-1/8" x 16" BC RIM BOARD™ OSB	624' 0"	
17	TL	1-1/8" x 16" BC RIM BOARD™ OSB	1,152' 0"	
Additional				
Tag	Qty	Product	Length	
n/a	27	1-1/8" x 16" BC RIM BOARD™ OSB	12' 0"	



(a) Nail pattern for 3 - piece member must occur on both sides.

Nail values may be increased by 15% for snow - load roofs and by 25% for non - snow roofs where building code allows.

F49 Multiple Member Connection Nail N.T.S.

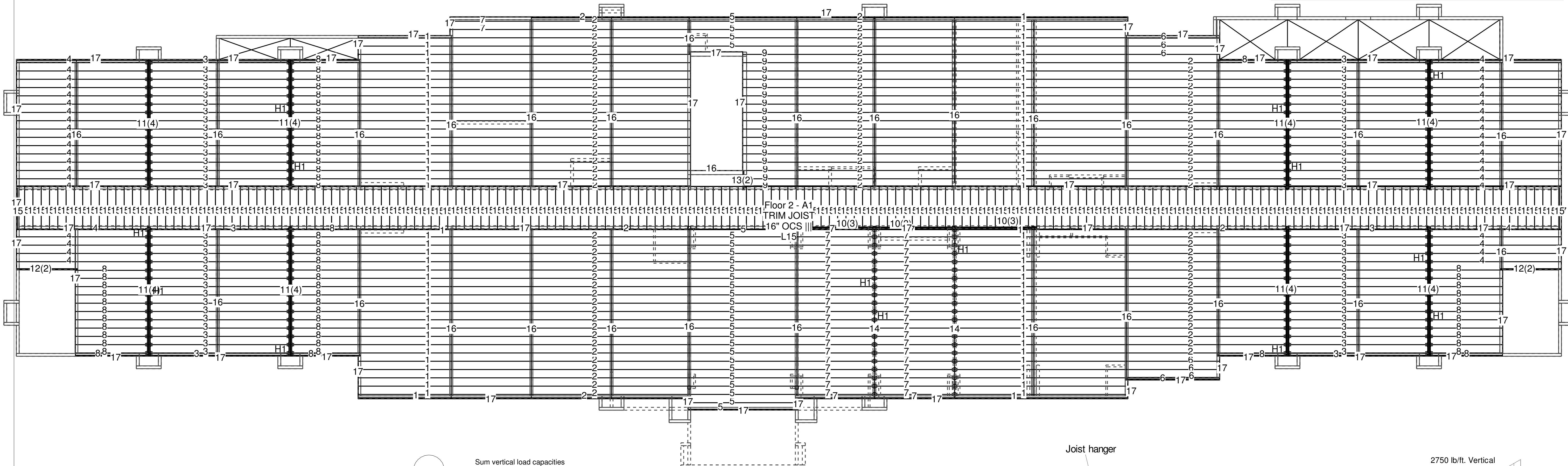


(a) 7" wide members must be loaded from both sides.

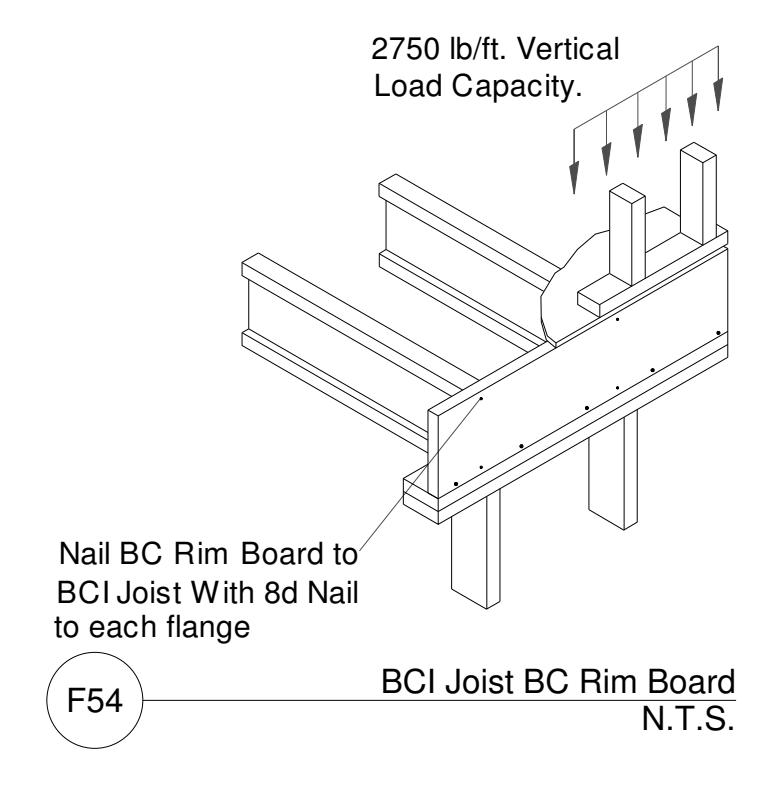
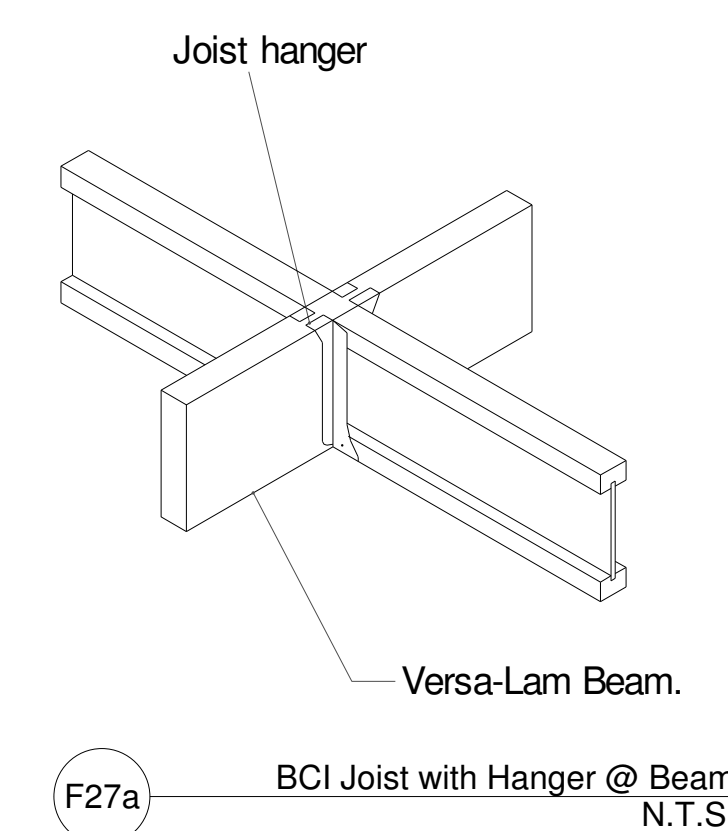
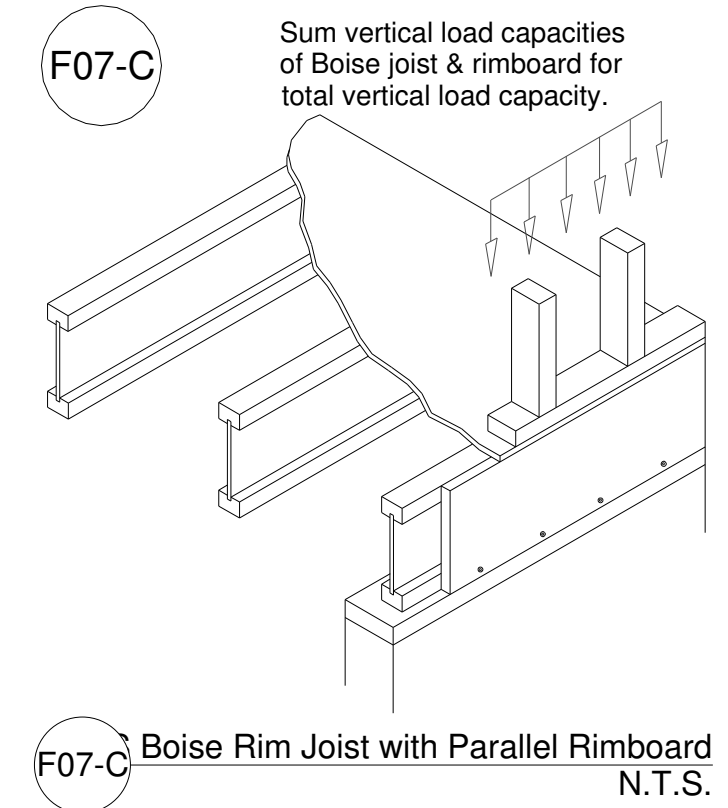
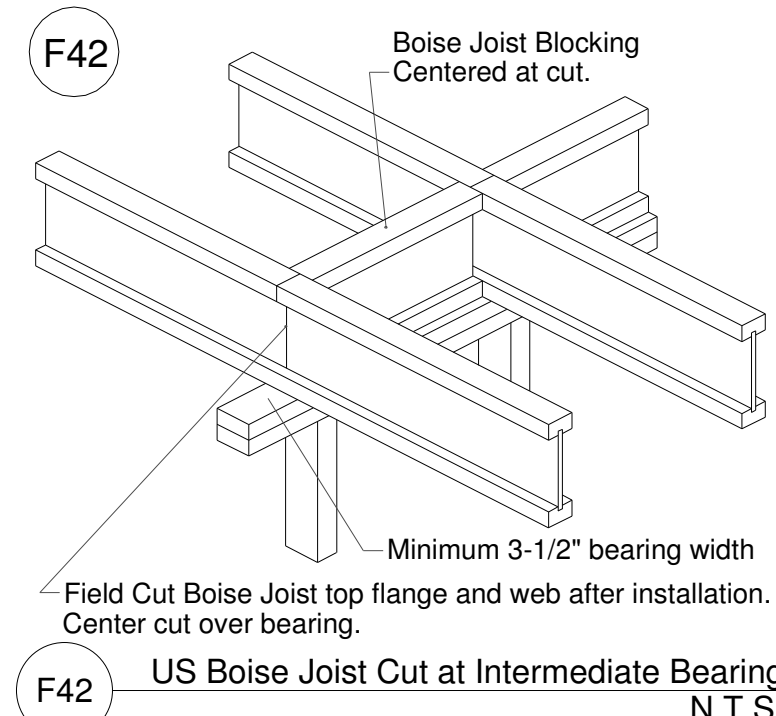
(b) Design values apply to common bolts (grade A&B, 1 or 2)

(c) All values in the table above may be increased 15% for snow loaded roofs and 25% for non-snow load roofs where code allows.

B12-B US Multiple VL Connection Side Load Bolt 5 N.T.S.



Plan View
1/8" = 1'-0"



Clinton Office #
Phone: 601-925-1782
Fax: 601-925-1783
e-mail: ronnie@elpewp.com

NOTE:
ALL MEASUREMENTS TO BE VERIFIED IN THE FIELD.

Floor 2

LOADING
floor 40LL/10DL
roof 20LL/20DL

Morrison Terrebone - Kevin
Hampton Inn - 1651 Fifth St.
Engineered Lumber Partners
Clinton, MS

BC FRAMER@ 3.0
SCALE: N.T.S.
DATE: 5/13/2012
BY: Ronnie Talley
FILE: 17407REV2.bcf
DWG:
SHEET: 1 / 1