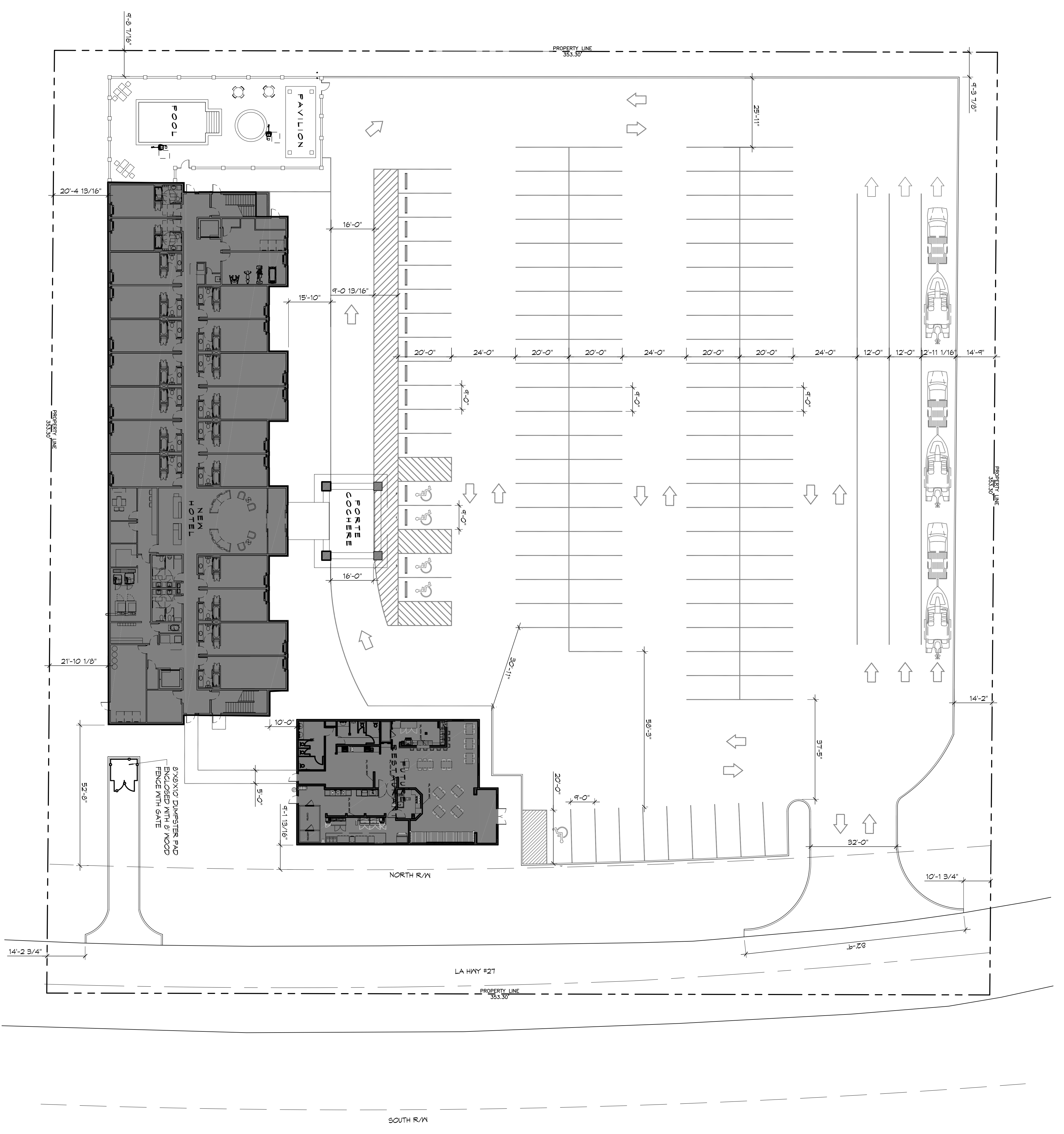


1 SITE PLAN

SCALE: 1" = 20'



PARKING STATISTICS

- PARKING REQUIREMENTS**
- GUEST ROOM COUNT
 - 100 ROOMS
 - PARKING COUNT REQUIREMENT
 - 1 PARKING SPACE PER GUEST ROOM
 - MINIMUM REQUIRED PARKING SPACE COUNT
 - 100 SPACES
 - PARKING SPACES PROVIDED
 - 113 SPACES (INCLUDING ACCESSIBLE SPACES)
- ACCESSIBILITY REQUIREMENTS**
- PER 2010 ADA STANDARDS FOR ACCESSIBLE DESIGN TABLE 208.2 GUEST ROOMS WITH MOBILITY FEATURES
 - SPACES PROVIDED
 - ACCESSIBLE PARKING SPACES
 - 01 - 130

DAMMON ENGINEERING, INC.

Architects & Engineers

Chief Architect: Kevin J. Kinchen, NCARB
 Chief Engineer: Brian Mistich, PE
 554 Old Spanish Trail
 Slidell, LA 70458

www.dammonengineering.com
 info@dammonengineering.com
 PH: 985.649.5832
 F: 985.641.5950

REVISIONS		DATE
#	DESCRIPTION	

PRELIMINARY NOT FOR CONSTRUCTION

NEW HOTEL & RESTAURANT FOR SPORTSMAN'S LODGE

LOT #1 LA HWY 27
 HACKBERRY, LA 70645

JOB No: 2141 DATE: 05-11-15
 DRAWN BY: CKD CHECKED BY: CKD

The above drawings and specifications, design and designations represented hereby are preliminary and subject to change without notice. They are not to be used for construction or for any other purpose without the written consent of Dammon Engineering, Inc. All dimensions are in feet and inches unless otherwise noted. All dimensions are to the centerline of the building or structure unless otherwise noted. All dimensions are to the centerline of the building or structure unless otherwise noted. All dimensions are to the centerline of the building or structure unless otherwise noted.

SHEET TITLE:
 SITE PLAN
 SCHEME "B"

DRAWING NUMBER:
C101

SHEET NO.: 00 of 4