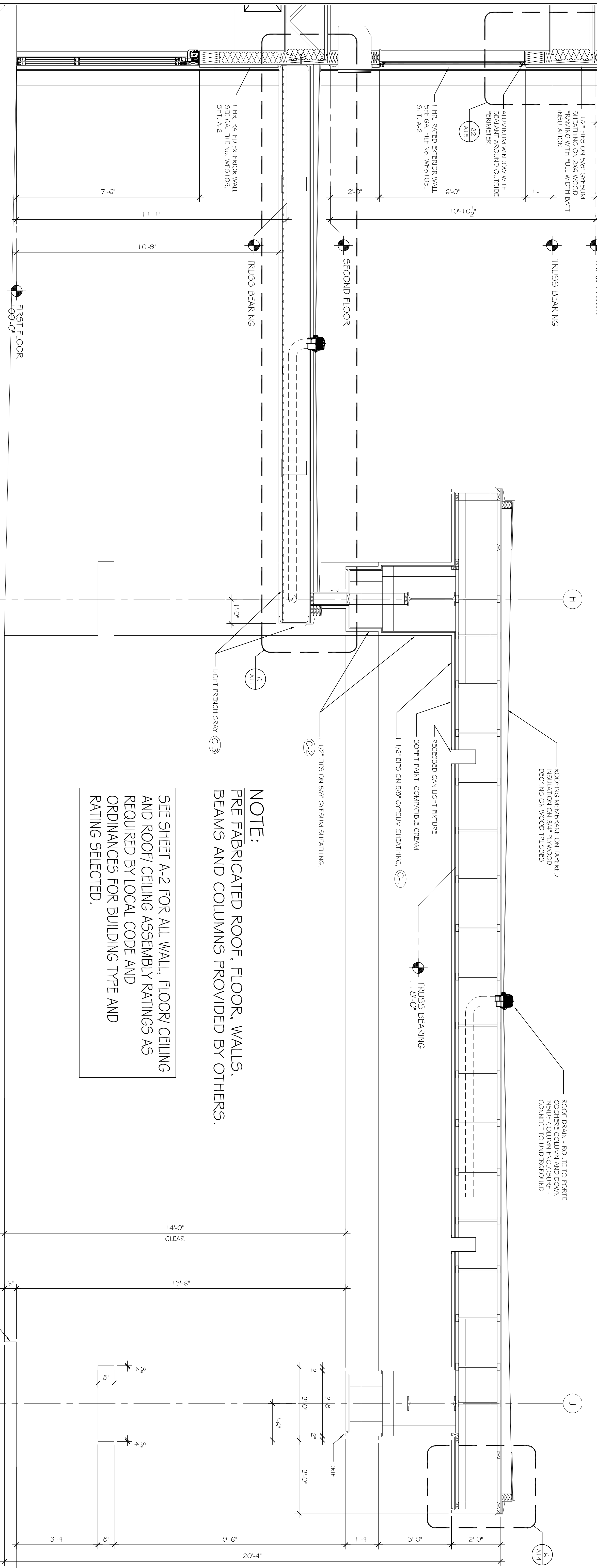


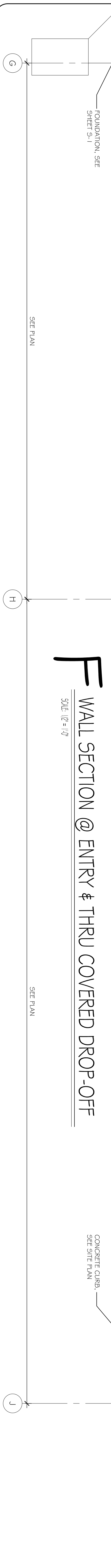
G SECTION DETAIL @ ENTRY
SCALE: 1/2" = 1'-0"



F WALL SECTION @ ENTRY & THRU COVERED DROP-OFF
SCALE: 1/2" = 1'-0"

SEE SHEET A-2 FOR ALL WALL, FLOOR/CEILING AND ROOF/CEILING ASSEMBLY RATINGS AS REQUIRED BY LOCAL CODE AND ORDINANCES FOR BUILDING TYPE AND RATING SELECTED.

NOTE:
PRE FABRICATED ROOF, FLOOR, WALLS, BEAMS AND COLUMNS PROVIDED BY OTHERS.



SECTION THRU MAIN ENTRY & COVERED DROP-OFF
SHEET No: 19 OF 53
A11

REVISIONS		DATE
#	DESCRIPTION	

LAQUINTA INNS & SUITES
507 CONSTITUTION DRIVE
WEST MONROE, LOUISIANA 71292
JOB No: 2196 DATE: 04-15-2014
DRAWN BY: JTL CHECKED BY: CKD

DAMMON ENGINEERING, INC.
Architects & Engineers

CHIEF ENGINEER: BRIAN MISTICH, P.E.
CHIEF ARCHITECT: KEVIN KINCHEN
554 OLD SPANISH TRAIL
SLIDELL, LA 70458

The above drawings and specifications, designs and arrangements represented hereby are and shall remain the property of Dammon Engineering, and no part thereof shall be copied, reproduced or transmitted in connection with any work or project other than the specific project for which the same were prepared and developed without written consent of Dammon Engineering. Local contact with these drawings or specifications shall constitute conclusive evidence of acceptance of these restrictions.

dammonengineering.com
dammoneng@bellsouth.net
PHONE: 985-649-5832
FAX: 985-641-5950