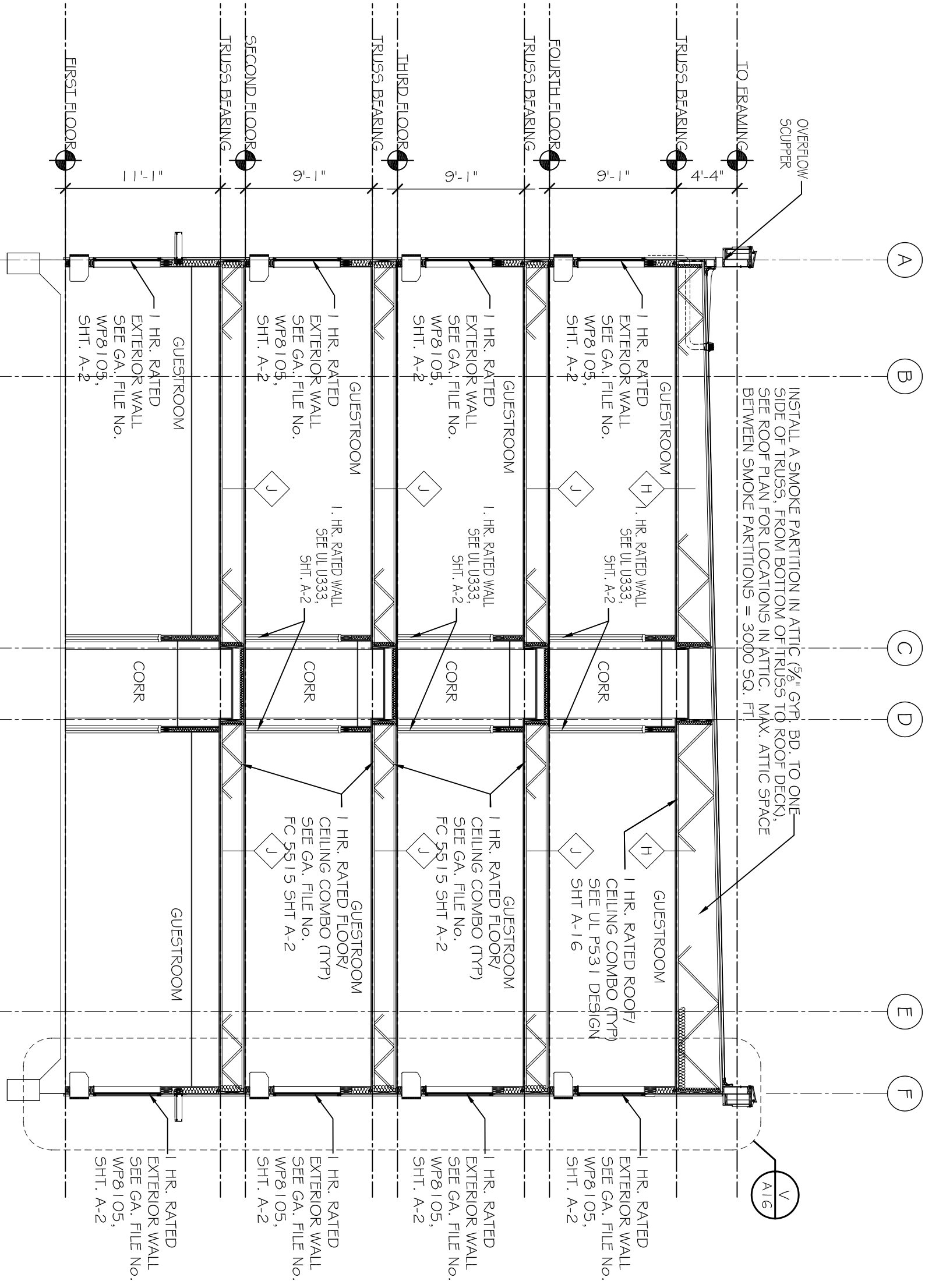
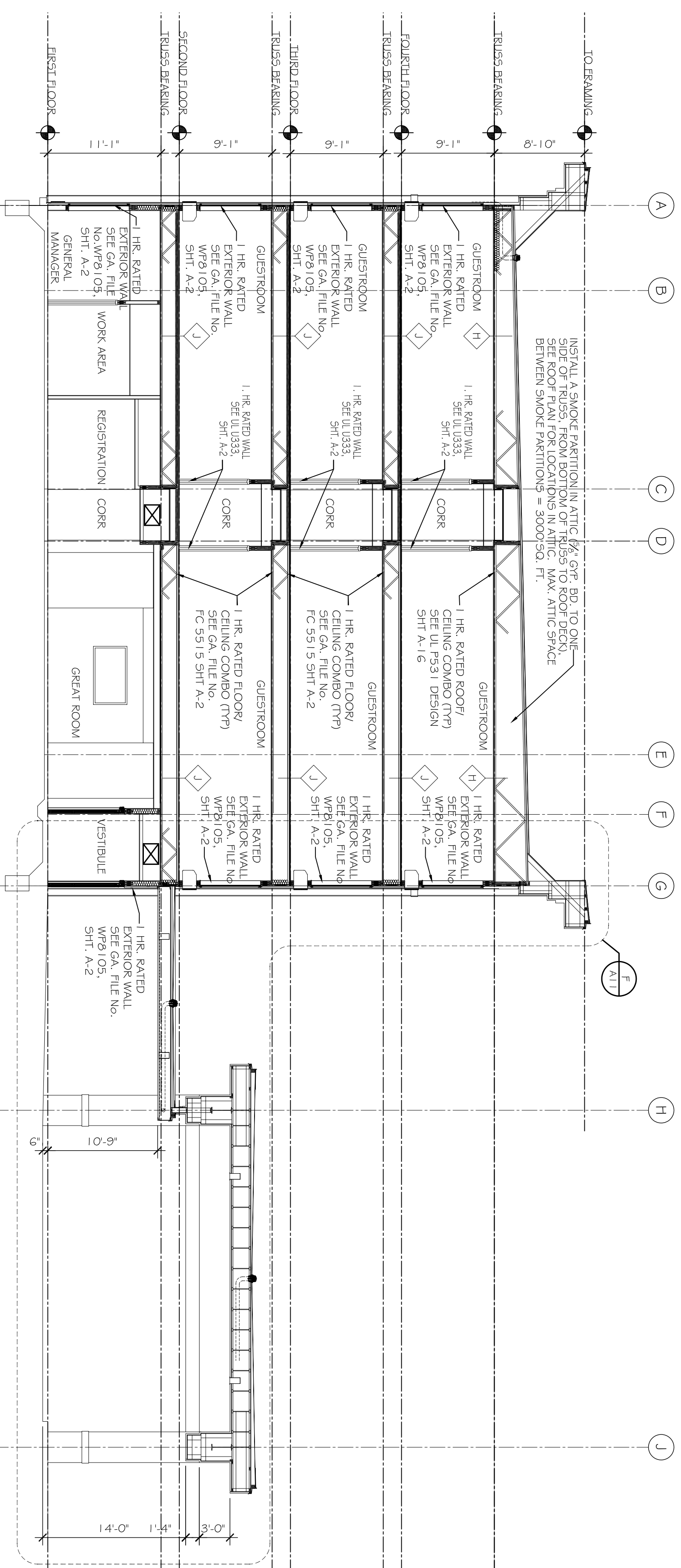


J BUILDING SECTION
SCALE: 1/8" = 1'-0"



K BUILDING SECTION (GUESTROOM)
SCALE: 1/8" = 1'-0"



H BUILDING SECTION @ LOBBY/ENTRY
SCALE: 1/8" = 1'-0"

NOTE: THIS DRAWING IS USED TO SHOW SPATIAL RELATIONSHIPS, REFER TO WALL SECTIONS, STRUCTURAL DRAWINGS, AND DETAILS FOR MORE DETAILED INFORMATION.

SEE SHEET A-2 FOR ALL WALL, FLOOR/CEILING AND ROOF/CEILING ASSEMBLY RATINGS AS REQUIRED BY LOCAL CODE AND ORDINANCES FOR BUILDING TYPE AND RATING SELECTED.

NOTE:
PRE FABRICATED ROOF,
FLOOR, WALLS, BEAMS,
AND COLUMNS PROVIDED
BY OTHERS.

LAQUINTA INNS & SUITES

507 CONSTITUTION DRIVE
WEST MONROE, LOUISIANA 71292

JOB No: 2196 DATE: 04-15-2014
DRAWN BY: JTL CHECKED BY: CKD

The above drawings and specifications, designs and management responsibilities hereby are and shall remain the property of Dammon Engineering, Inc. and no part thereof shall be copied, reproduced or otherwise used in connection with any work or project other than the specific project for which the same were prepared and developed without written consent of Dammon Engineering. Your contact with these drawings or specifications shall constitute conclusive evidence of acceptance of these instructions.



DAMMON
ENGINEERING, INC.
Architects & Engineers

CHIEF ENGINEER, BRIAN MISTICH, P.E.
CHIEF ARCHITECT, KEVIN KINCHEN
554 OLD SPANISH TRAIL
SLIDELL, LA 70458

dammonengineering.com
dammoning@bellsouth.net
PHONE: 985-649-5832
FAX: 985-641-5990

#	DESCRIPTION	DATE

BUILDING SECTIONS

SHEET No: 20 OF 53

A12