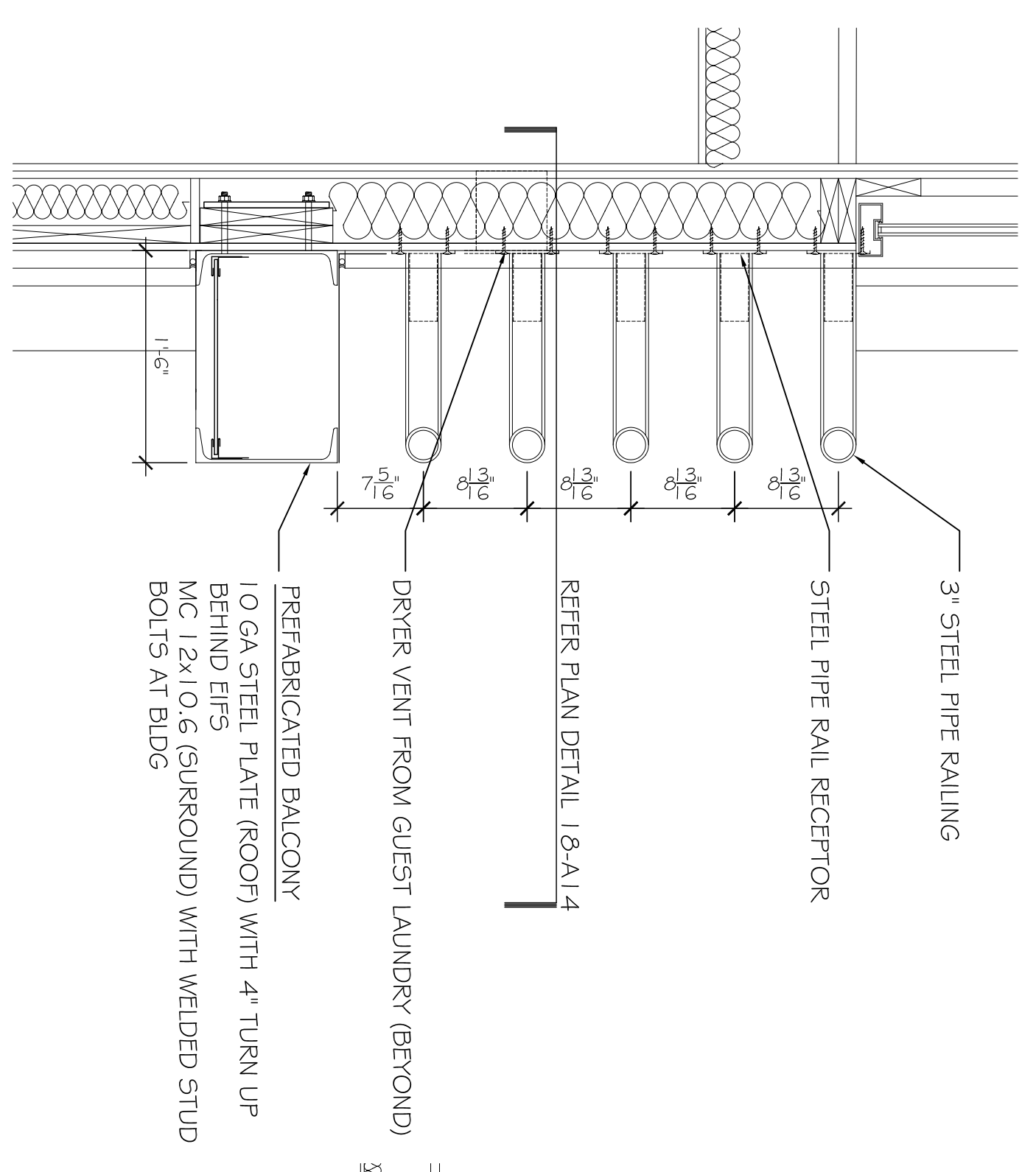
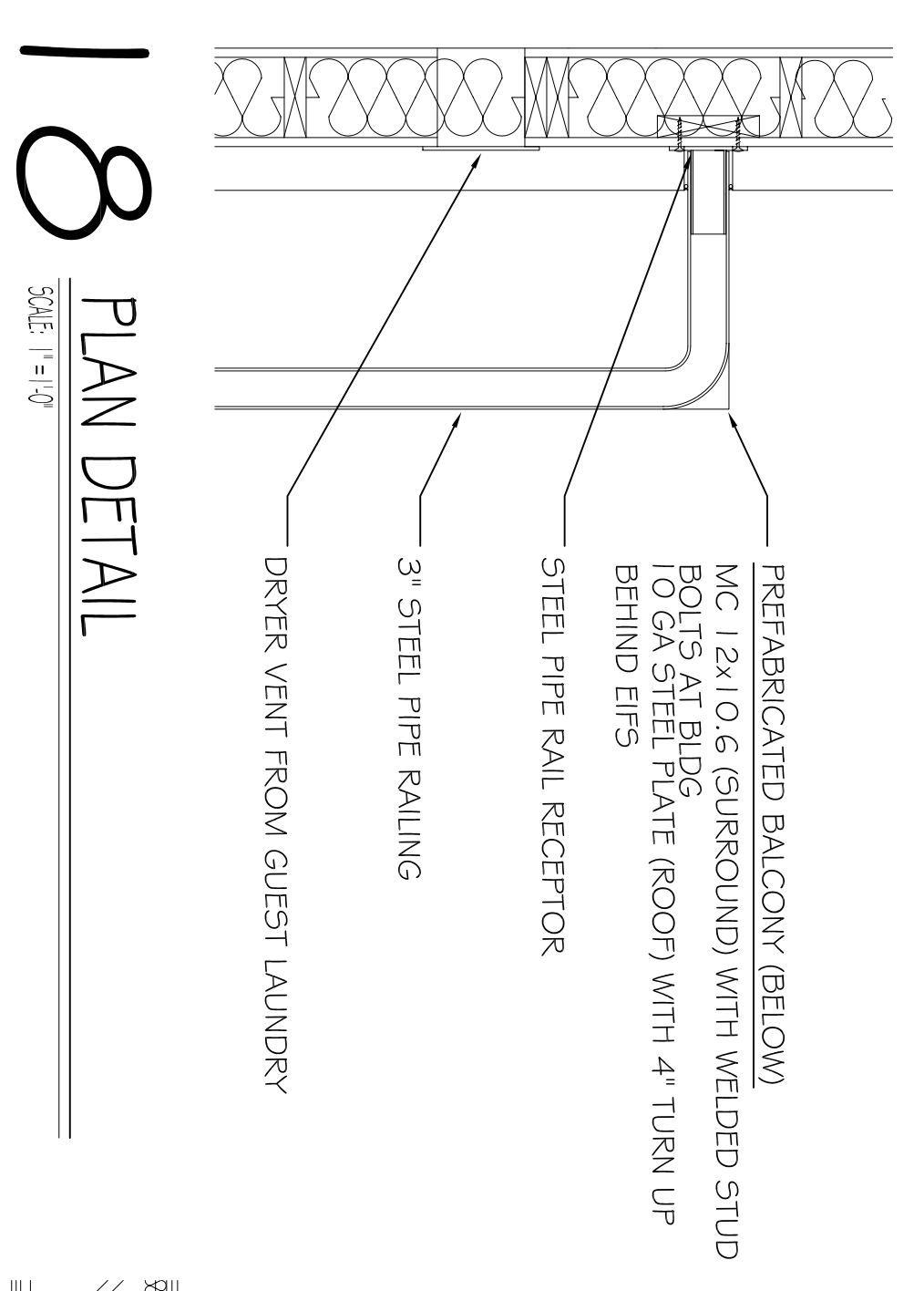


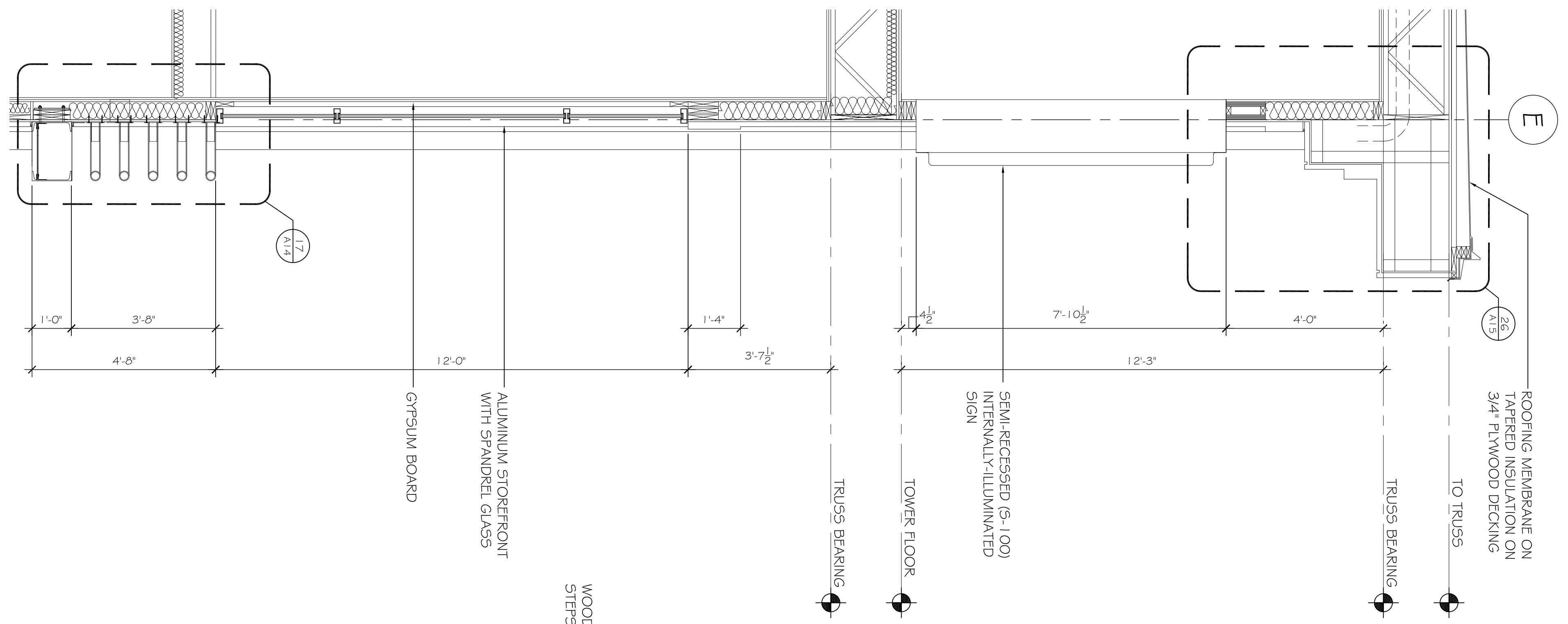
U WALL SECTION @ EIFS PILASTER
SCALE: 1/2" = 1'-0"



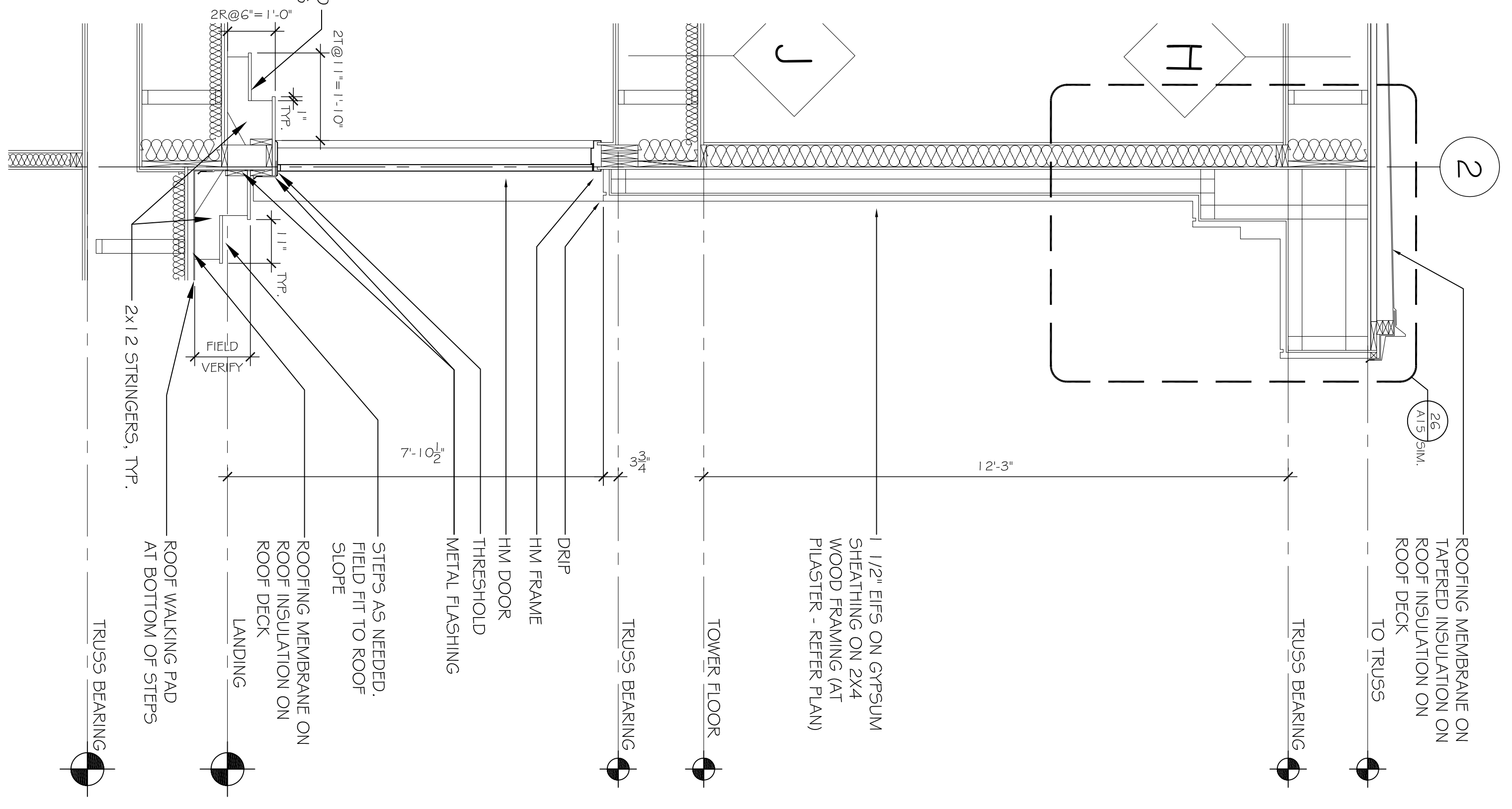
V SECTION DETAIL
SCALE: 1" = 1'-0"



W PLAN DETAIL
SCALE: 1" = 1'-0"



X WALL SECTION @ TOWER
SCALE: 1/2" = 1'-0"



Y WALL SECTION @ TOWER
SCALE: 1/2" = 1'-0"

SEE SHEET A-2 FOR ALL WALL, FLOOR/CEILING AND ROOF/CEILING ASSEMBLY RATINGS AS REQUIRED BY LOCAL CODE AND ORDINANCES FOR BUILDING TYPE AND RATING SELECTED.

NOTE:
PRE FABRICATED ROOF, FLOOR, WALLS, BEAMS AND COLUMNS PROVIDED BY OTHERS.

REVISIONS		DATE
#	DESCRIPTION	

LAQUINTA INNS & SUITES
507 CONSTITUTION DRIVE
WEST MONROE, LOUISIANA 71292

JOB No: 2196 DATE: 04-15-2014
DRAWN BY: JTL CHECKED BY: CKD

DAMMON
ENGINEERING, INC.
Architects & Engineers

CHIEF ENGINEER: BRIAN MISTICH, P.E.
CHIEF ARCHITECT: KEVIN KINCHEN
554 OLD SPANISH TRAIL
SLIDELL, LA 70458

dammonengineering.com
dammoneng@bellsouth.net
PHONE: 985-649-5832
FAX: 985-641-5950

WALL SECTIONS
SHEET No: 22 OF 53
A14