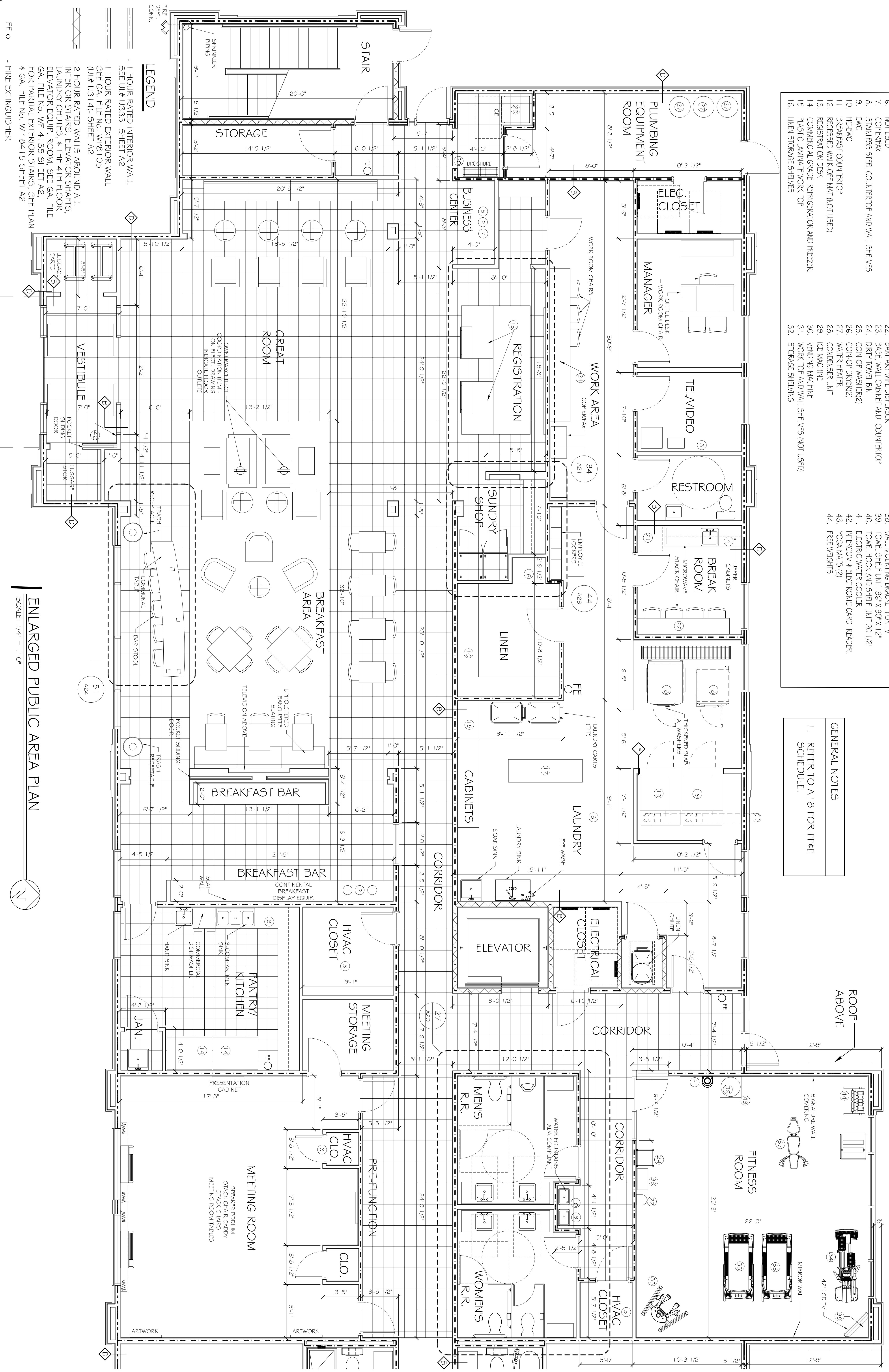


- KEYNOTES BY SYMBOL** (X)
- BASE CABINET
  - STONE COUNTERTOP
  - HVAC UNIT (SEE MECHANICAL PLAN)
  - PLASTIC LAMINATE COUNTERTOP AND BACKSPASH
  - COMPUTER KEYBOARD DRAWER/TRAY
  - NOT USED
  - CORNER/FAX
  - STAINLESS STEEL COUNTERTOP AND WALL SHELVES
  - HWC
  - H.C. HWC
  - BREAKFAST COUNTERTOP
  - REGISTERED WALK-OFF MAT (NOT USED)
  - COMMERCIAL GRADE REFRIGERATOR AND FREEZER
  - PLASTIC LAMINATE WORK TOP
  - LINE STORAGE SHELVES
  - LAUNDRY TABLE
  - WASHERS (2)
  - DRYERS (2)
  - BROCHURE RACK
  - REFRIGERATOR
  - SANITARY WIPER DISPENSER
  - BASE, WALL CABINET AND COUNTERTOP
  - DIRTY TOWEL BIN
  - COIN-OP WASHER(2)
  - COIN-OP DRYER(2)
  - WATER HEATER
  - CONDENSER UNIT
  - ICE MACHINE
  - VENDING MACHINE
  - WORK TOP AND WALL SHELVES (NOT USED)
  - STORAGE SHELVING
  - EXERCISE TREADMILL
  - ELECTRICAL
  - WEIGHT MACHINE
  - WEIGHT BALLS
  - WEIGHT BENCH
  - WALL MOUNTING BRACKET FOR TV
  - TOWEL SHELF UNIT, 36" X 30" X 12"
  - TOWEL HOOK AND SHELF UNIT 20 1/2"
  - ELECTRIC WATER COOLER
  - INTERCOM & ELECTRONIC CARD READER
  - YOGA MATS (2)
  - FREE WEIGHTS

- KEYNOTES BY SYMBOL** (X)
- REFER TO SHEET A1G FOR \* WALL TYPE DESCRIPTIONS
- GENERAL NOTES**
- REFER TO A1B FOR FF&E SCHEDULE.

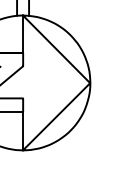


FE 0  
- FIRE EXTINGUISHER

**LEGEND**

- 1 HOUR RATED INTERIOR WALL SEE UI# U333- SHEET A2
- 1 HOUR RATED EXTERIOR WALL SEE GA. FILE NO. WP8105 (UI# U314)- SHEET A2
- 2 HOUR RATED WALLS AROUND ALL INTERIOR STAIRS, ELEVATOR SHAFTS, LAUNDRY CHUTES, & THE 4TH FLOOR ELEVATOR EQUIP. ROOM, SEE GA. FILE NO. WP 4135 SHEET A2.
- FOR PARTIAL EXTERIOR STAIRS, SEE PLAN # GA. FILE NO. WP 8415 SHEET A2

**ENLARGED PUBLIC AREA PLAN**



SCALE: 1/4" = 1'-0"

#	DESCRIPTION	DATE

**LAQUINTA INNS & SUITES**  
507 CONSTITUTION DRIVE  
WEST MONROE, LOUISIANA 71292

JOB No: 2196    DATE: 04-15-2014  
DRAWN BY: JTL    CHECKED BY: CKD

**DAMMON ENGINEERING, INC.**  
Architects & Engineers

CHIEF ENGINEER, BRIAN MISTICH, P.E.  
CHIEF ARCHITECT, KEVIN KINCHEN  
554 OLD SPANISH TRAIL  
SLIDELL, LA 70458

dammoneengineering.com  
dammoneing@bellsouth.net  
PHONE: 985-649-5832  
FAX: 985-641-5950

SHEET No: 27 OF 53  
**A19**

**ENLARGED PUBLIC AREA PLAN**