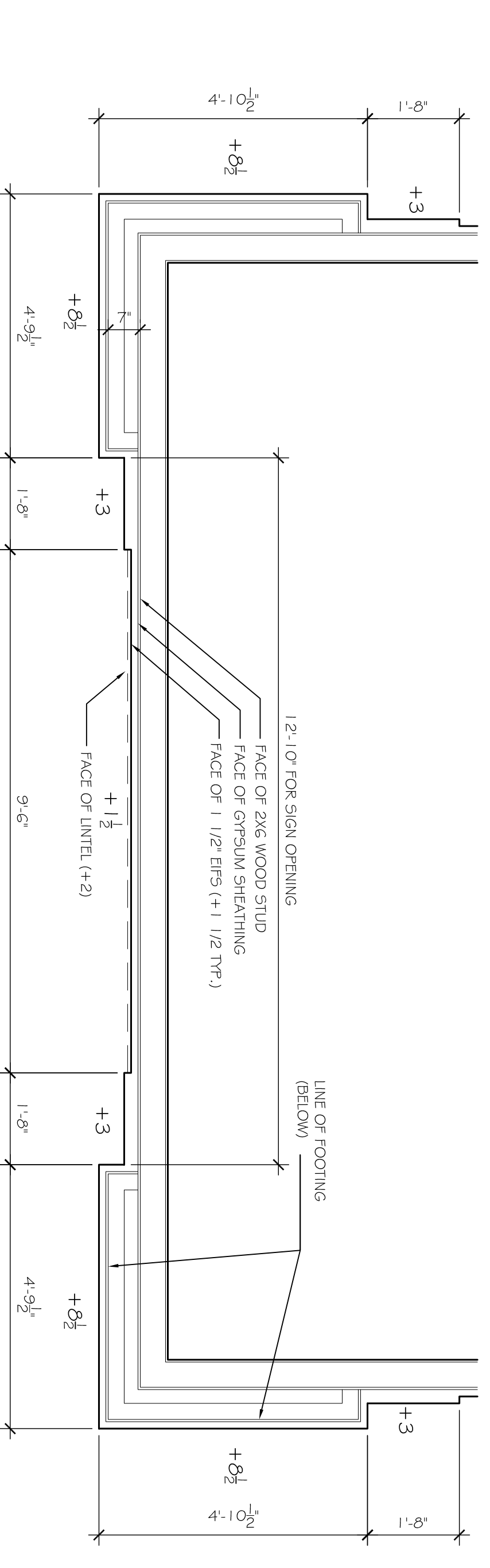


16 ELEVATION DETAILS
SCALE: 1/2" = 1'-0"

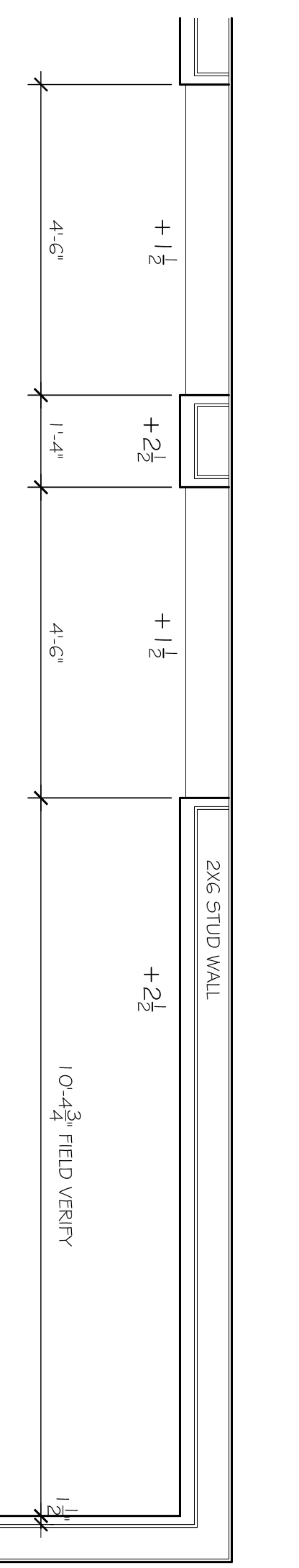


15 ELEVATION DETAILS
SCALE: 1/2" = 1'-0"

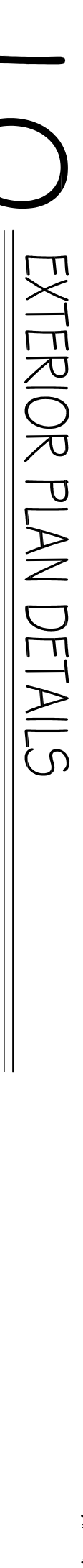
14 ELEVATION DETAILS
SCALE: 1/2" = 1'-0"

13 ELEVATION DETAILS
SCALE: 1/2" = 1'-0"

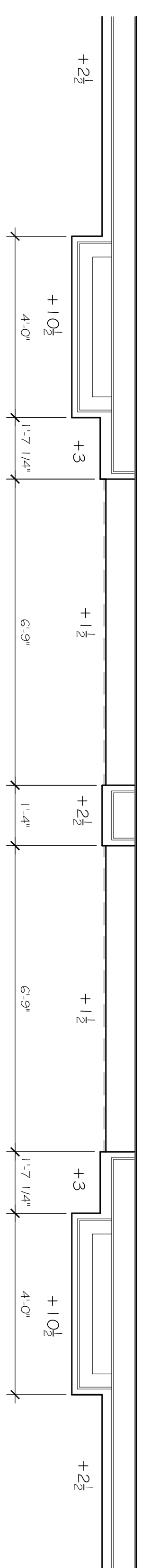
12 EXTERIOR PLAN DETAILS (TOWER)
SCALE: 1/2" = 1'-0"



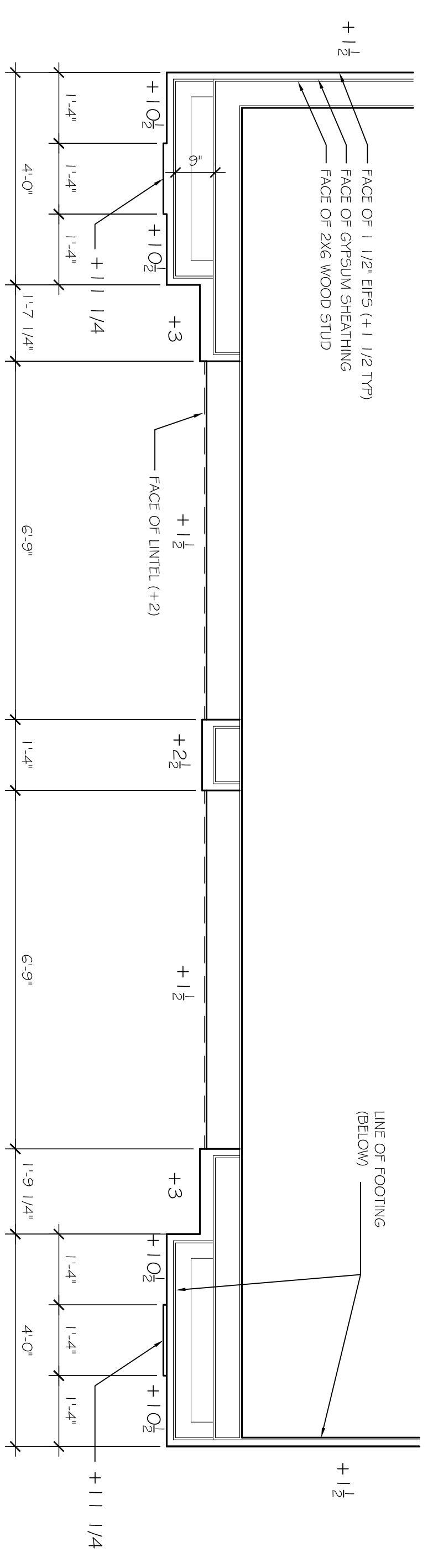
10 EXTERIOR PLAN DETAILS
SCALE: 1/2" = 1'-0"



11 EXTERIOR PLAN DETAILS (FRONT CENTER PEDIMENT)
SCALE: 1/2" = 1'-0"



9 EXTERIOR PLAN DETAILS (EXTENDED PEDIMENT)
SCALE: 1/2" = 1'-0"



NOTE
FACE OF SHEATHING IS (+) FOR THE PURPOSE OF DETERMINING THE EIFS THICKNESS - EIFS THICKNESS NOT TO EXCEED 4" - FRAMING REQUIRED AT ALL LOCATIONS WHERE EIFS THICKNESS IS GREATER THAN (+)

EXTERIOR PLAN DETAILS

LAQUINTA INNS & SUITES

507 CONSTITUTION DRIVE
WEST MONROE, LOUISIANA 71292

JOB No: 2196 DATE: 04-15-2014
DRAWN BY: JTL CHECKED BY: CKD

The above drawings and specifications, designs and arrangements represented hereby are and shall remain the property of Dammon Engineering, Inc. and no part thereof shall be copied, reproduced or otherwise used in connection with any work or project other than the specific project for which they have been prepared and developed without written consent of Dammon Engineering, Inc. Local contact with these drawings or specifications shall constitute conclusive evidence of acceptance of these restrictions.



DAMMON
ENGINEERING, INC.
Architects & Engineers

CHIEF ENGINEER: BRIAN MISTICH, P.E.
CHIEF ARCHITECT: KEVIN KINCHEN
554 OLD SPANISH TRAIL
SLIDELL, LA 70458

dammonengineering.com
dammoneng@bellsouth.net
PHONE: 985-649-5832
FAX: 985-641-5990

| REVISIONS | | DATE |
|-----------|-------------|------|
| # | DESCRIPTION | |
| | | |
| | | |

EXTERIOR BUILDING DETAILS

SHEET No: 17 OF 53

A9