

▲ revisions:  
 OWNER REVISION 5-27-97  
 OWNER REVISION 7-3-97  
 CHG TO PRECAST 8-8-97  
 FINAL REVIEW 8-28-97  
 ▲ 10-14-97

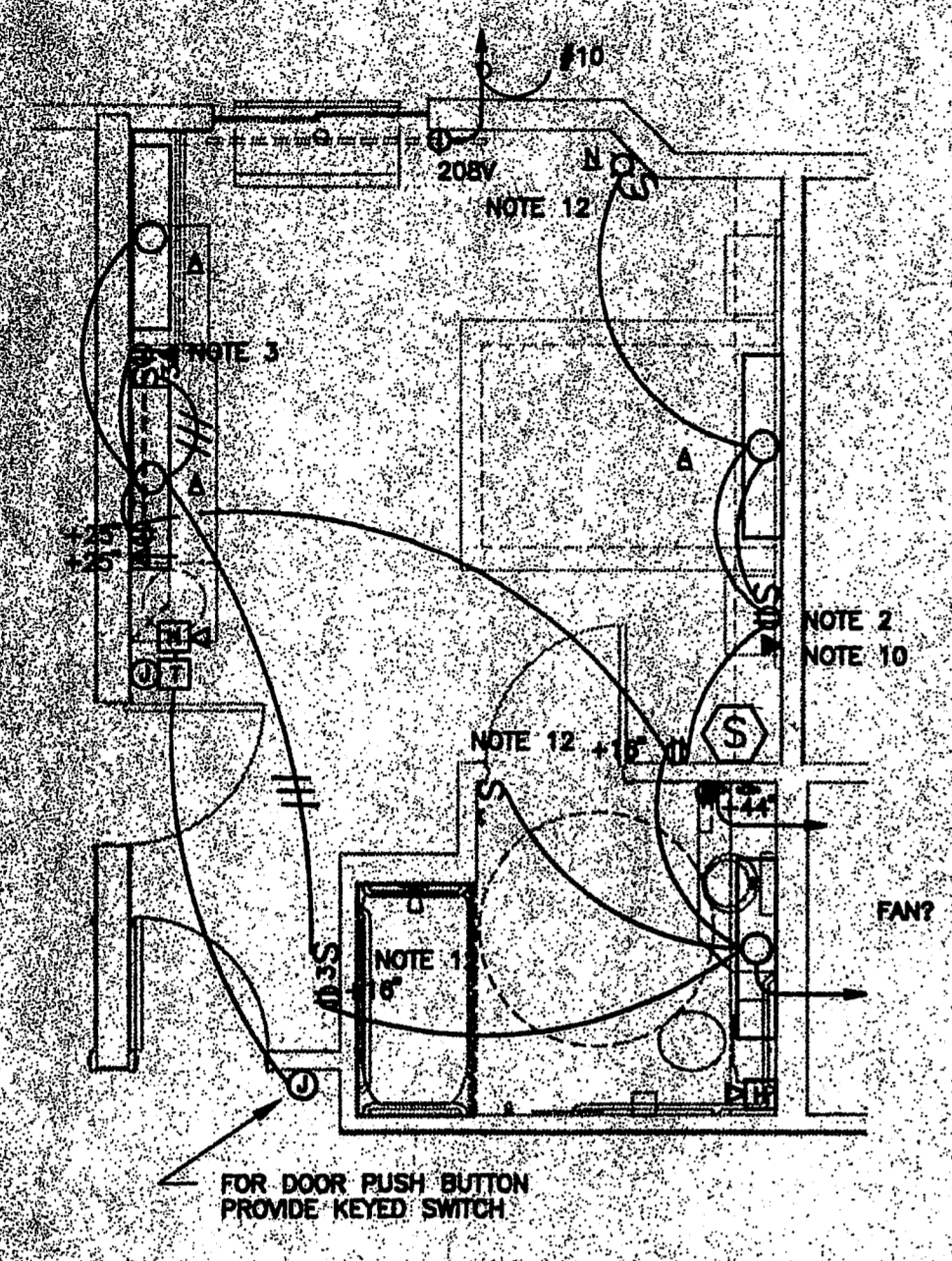
▲ seal:

**Sleep Inn**  
**Jackson, Mississippi**

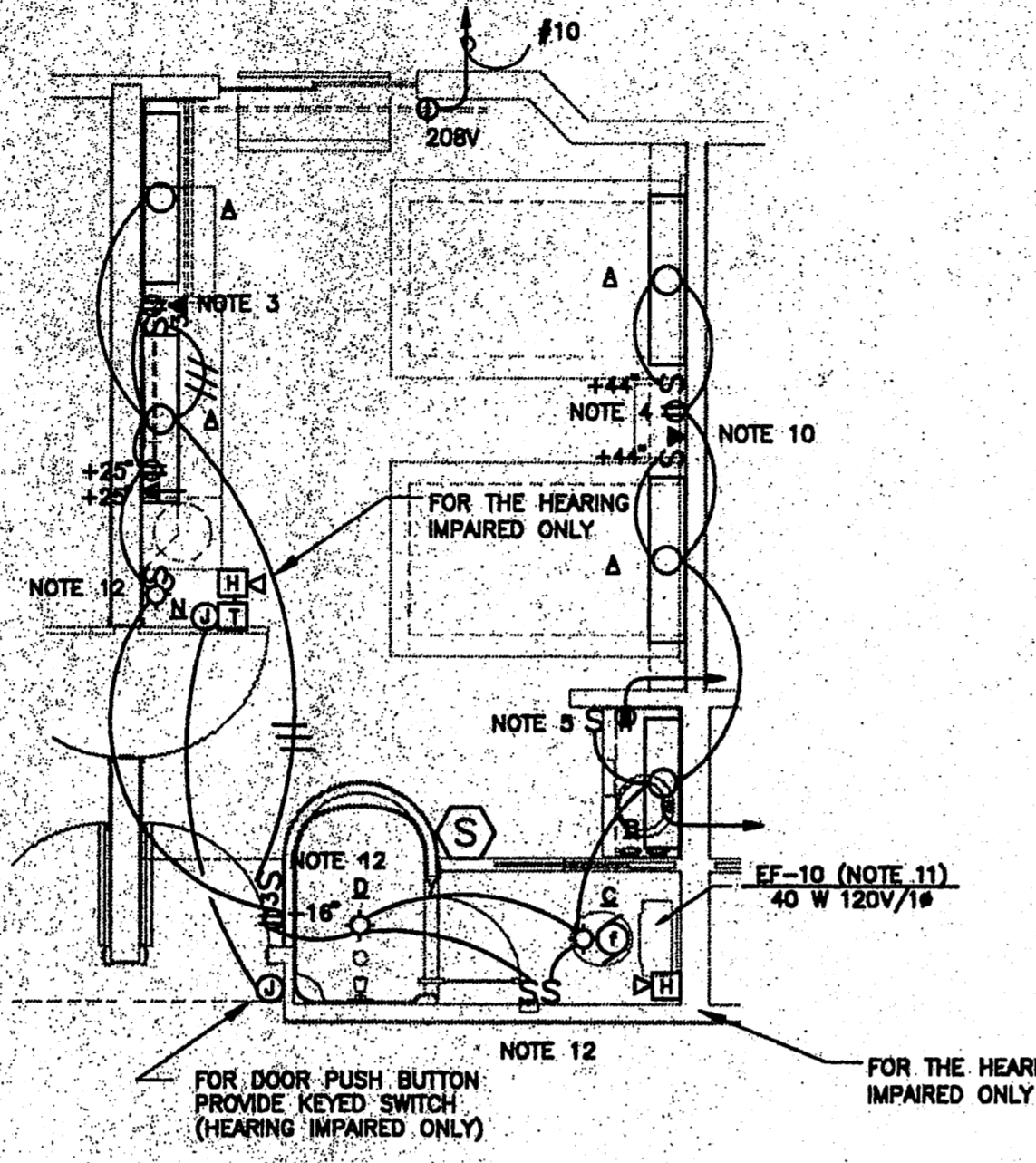
▲ title:  
 LARGE SCALE  
 GUEST ROOMS  
 ELECTRICAL

▲ date: 8-22-97  
 ▲ job: 1697  
 ▲ file: 1697-A22  
 ▲ scale: 1/8" = 1'-0"

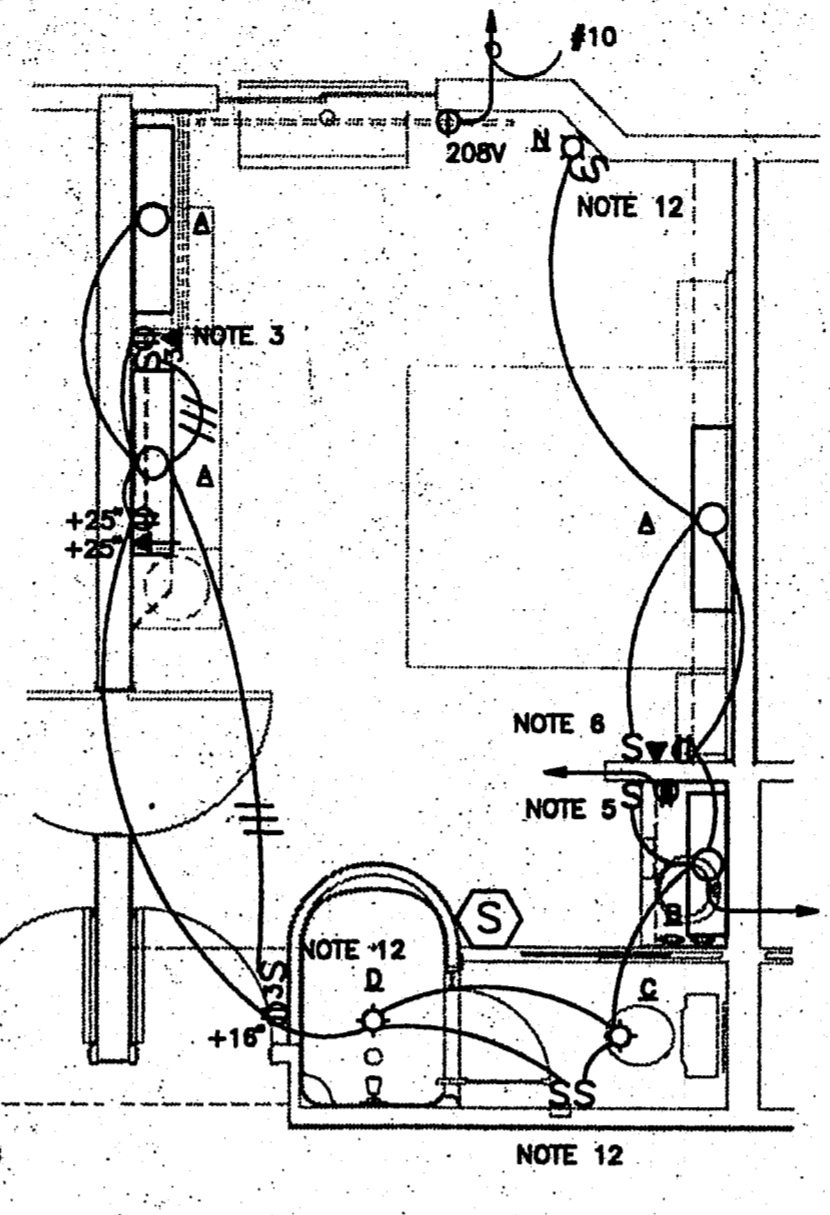
sheet  
**13.1**  
 of 10



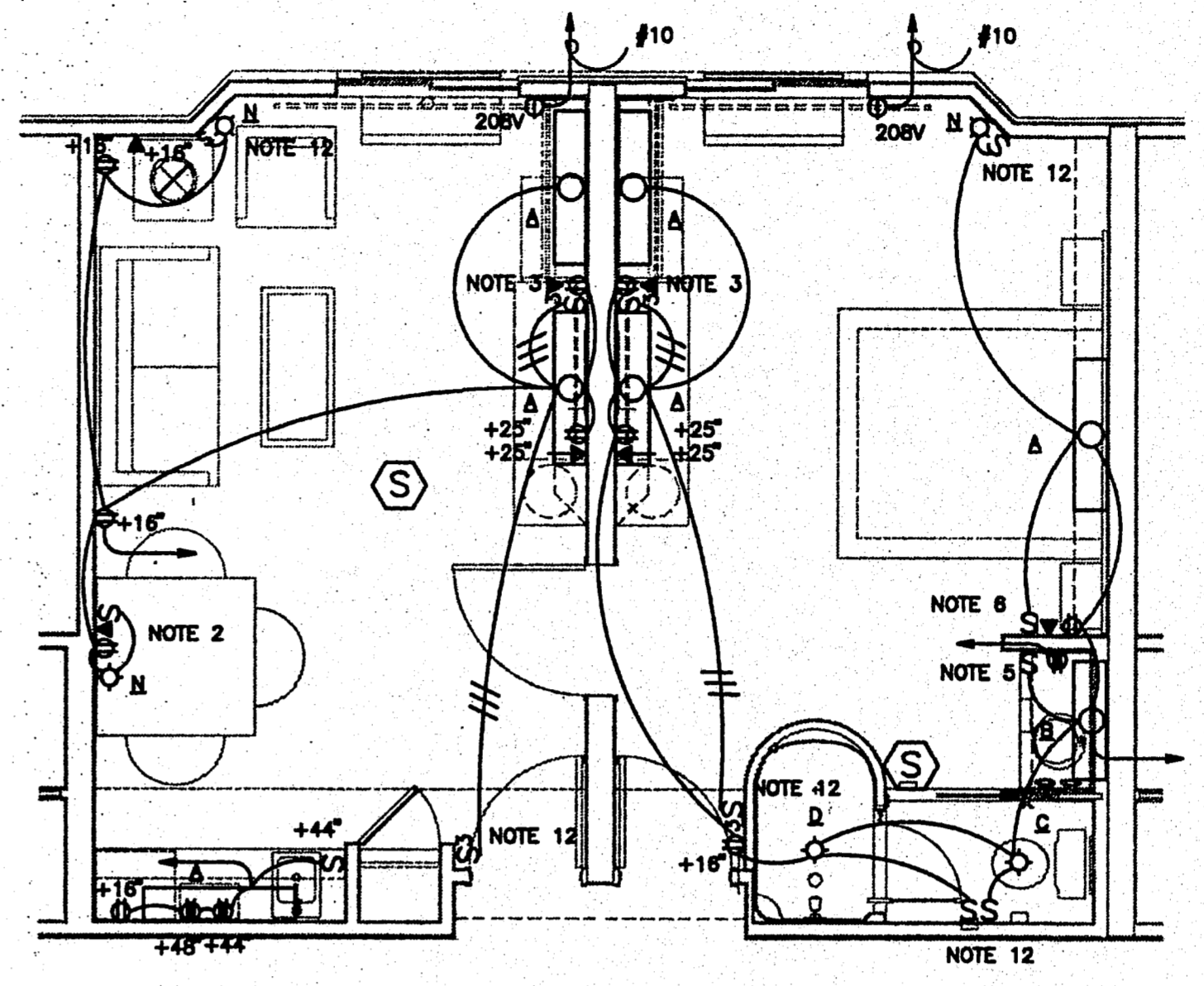
HANDICAP GUEST ROOM A



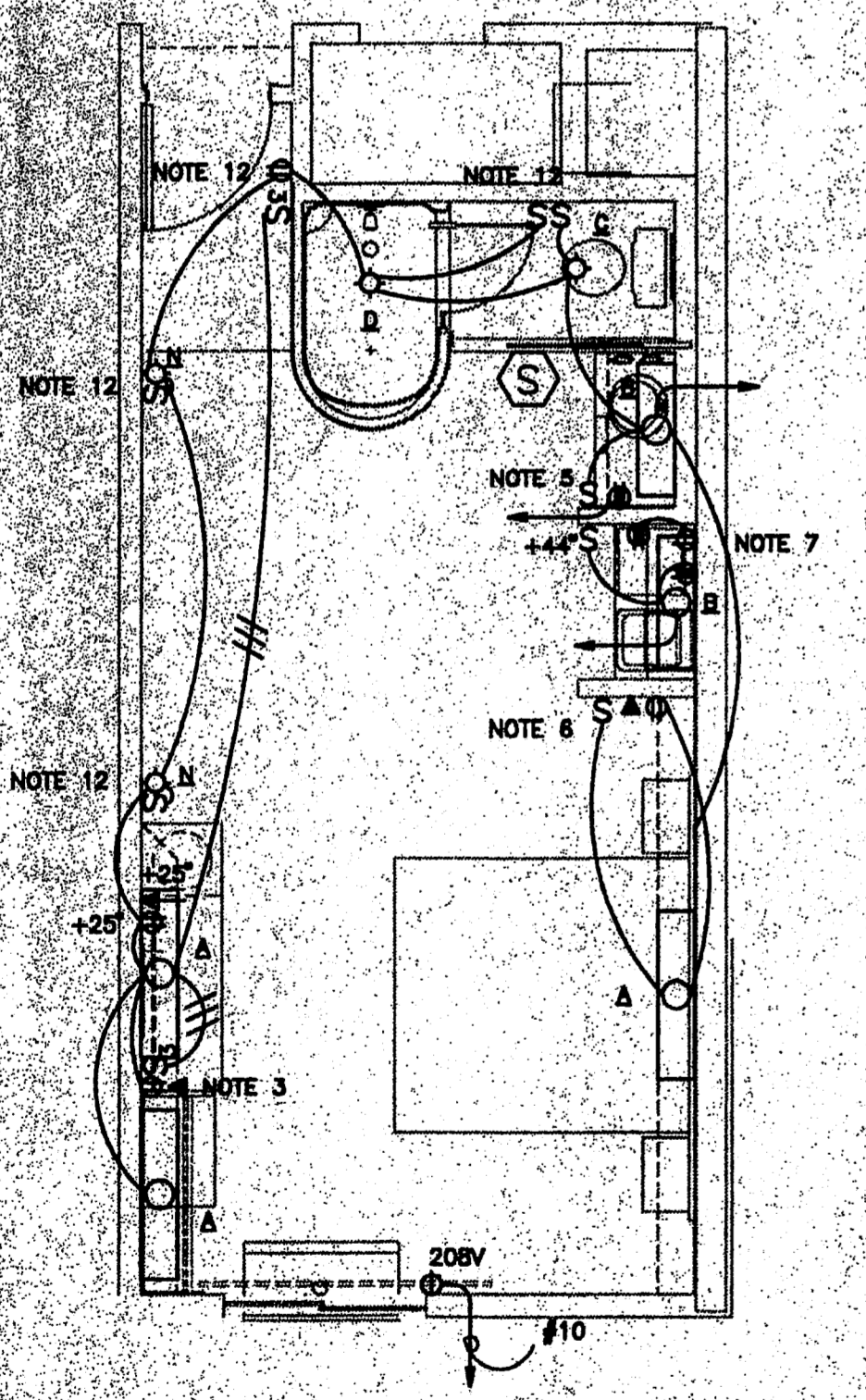
GUEST ROOM TYPE B



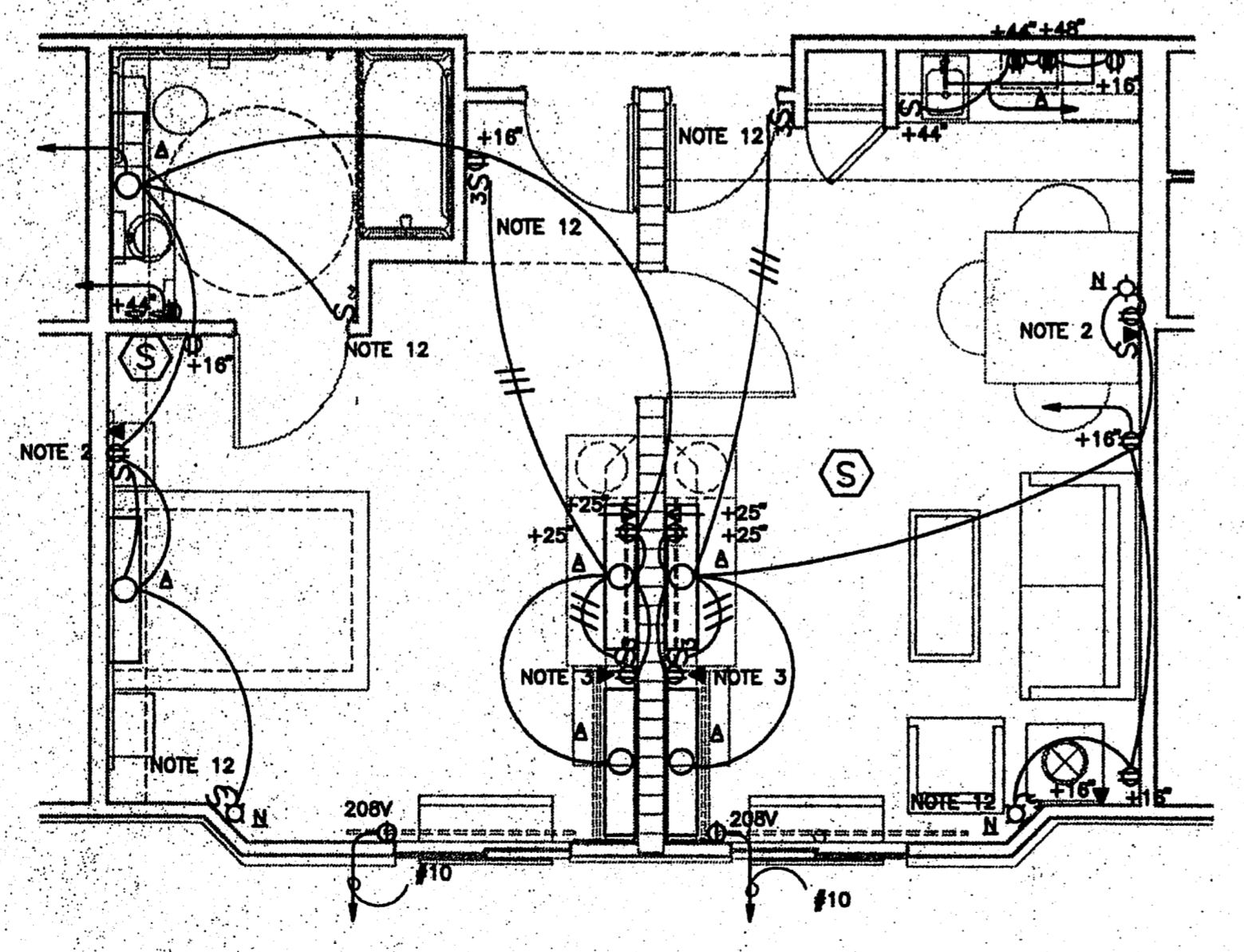
GUEST ROOM TYPE C



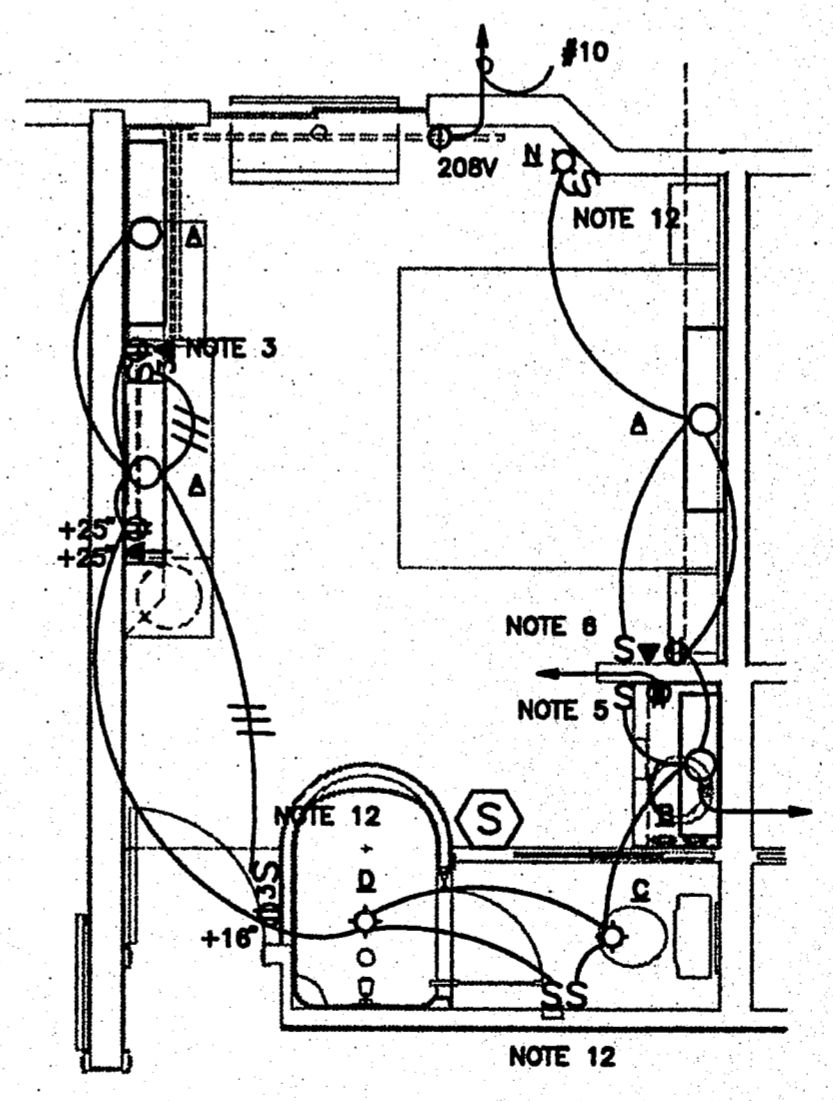
GUEST ROOM TYPE D



GUEST ROOM TYPE E



GUEST ROOM TYPE F



GUEST ROOM TYPE G

**DRAWING NOTES**

1. ALL FIXTURES MARK "A" UNLESS OTHERWISE NOTED.
2. MOUNT LIGHTED TOGGLE SWITCH, RECEPTACLE, AND TELEPHONE JACK 44" A.F.F.
3. COMBINATION LIGHTED TOGGLE SWITCH/DUPLEX RECEPTACLE/ TELEPHONE JACK MOUNTED AT 36" A.F.F. MOUNT AT 42" FOR ADJOINING ROOMS.
4. RECEPTACLE AND TELEPHONE JACK MOUNTED HORIZONTALLY AT 8.5" A.F.F.
5. SWITCH WITH LIGHTED TOGGLE AND GFI RECEPTACLE MOUNTED AT 44" A.F.F.
6. LIGHTED TOGGLE SWITCH MOUNTED AT 24" A.F.F. TELEPHONE JACK AND RECEPTACLE MOUNTED AT 24" A.F.F.
7. GFI RECEPTACLE FOR COUNTER-MOUNTED MICROWAVE AT 44" A.F.F. RECEPTACLE FOR UNDER COUNTER REFRIGERATOR AT 16" A.F.F.
8. PROVIDE GUEST ROOM 120 V SINGLE STATION MINI HORN & SMOKE DETECTOR IN ALL GUEST ROOMS NOT ACCESSIBLE OR HEARING IMPAIRED.
9. PROVIDE GUEST ROOM 120 V SINGLE STATION MINI HORN SMOKE DETECTOR AND STROBE LIGHT IN ALL GUEST ROOMS ACCESSIBLE OR HEARING IMPAIRED.
10. PROVIDE PHONES IN ACCESSIBLE AND HEARING IMPAIRED ROOMS: PHONE SHALL HAVE VISUAL INDICATOR AND VOLUME CONTROL.
11. PROVIDE FANS ONLY FOR ROOMS #200, #227, #300, #327 #400, #427 (END WALL ROOMS). SEE MECH. DRAWINGS.
12. PROVIDE LIGHTED TOGGLE SWITCHES. MOUNT AT 44" A.F.F.