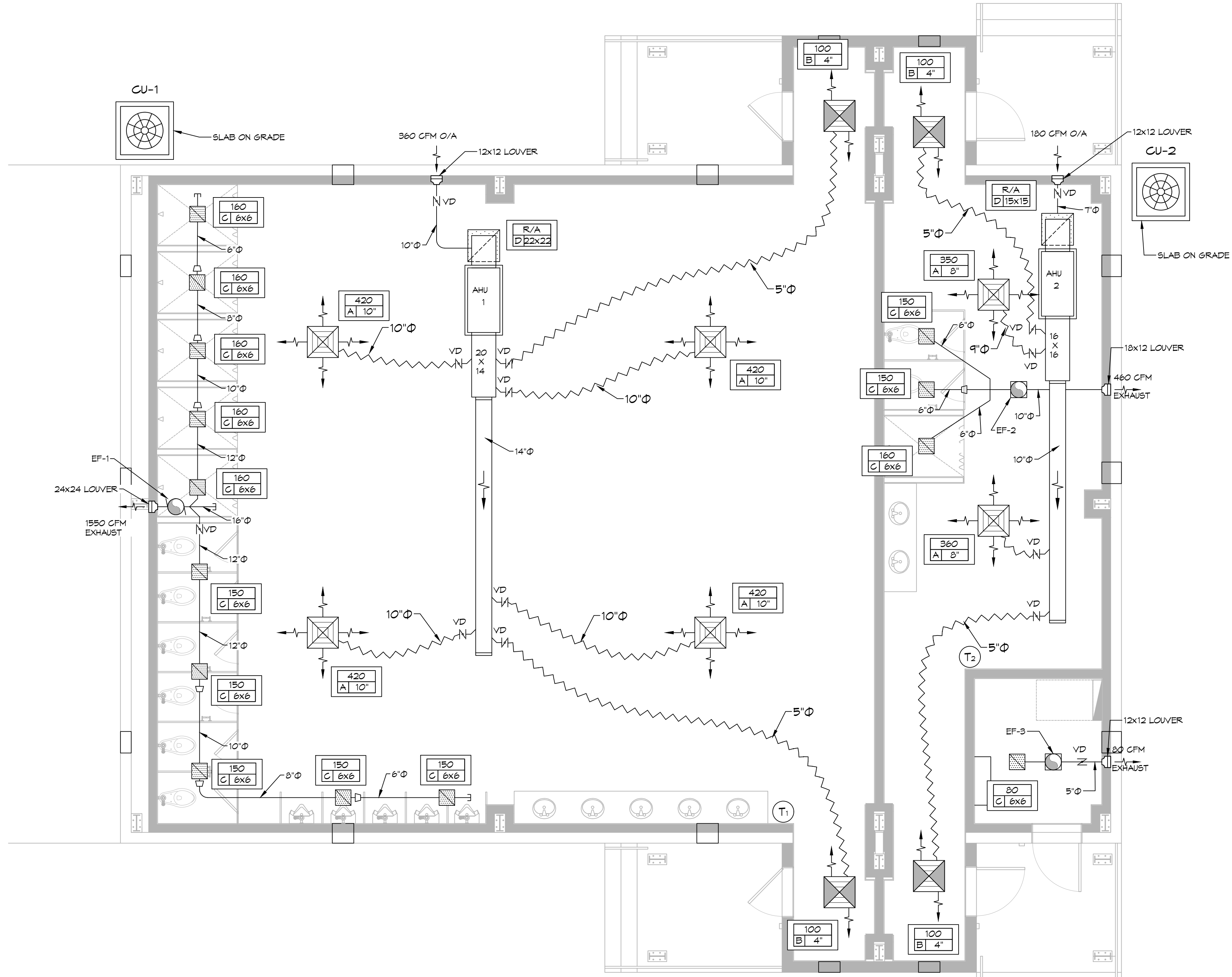


**TYPICAL DETAILS**  
 SCALE: N.T.S.

HVAC LEGEND	
	SUPPLY AIR GRILLE
	RETURN AIR GRILLE
	TWO-WAY BLOW
	FIRE DAMPER
	DAMPER CONTROL
	THERMOSTAT
	EXHAUST FAN

- HVAC NOTES**
1. CONCEALED DUCTWORK TO BE GALVANIZED SHEET METAL WRAPPED WITH FIBROUS GLASS DUCT WRAP WITH FSK VAPOR BARRIER, MIN R-6, INSTALLED PER SMAGNA STANDARDS. DUCT WORK IMMEDIATELY DOWNSTREAM FROM RTU SHALL BE LINED FOR SOUND ATTENUATION.
  2. EXPOSED DUCTWORK TO BE GALVANIZED SHEET METAL LINED WITH FIBROUS GLASS DUCT LINER, MIN R-6, INSTALLED PER SMAGNA STANDARDS.
  3. ROUND FLEXIBLE DUCT TO BE UL-181, CLASS 1, AIR DUCT MATERIALS.
  4. DUCT SIZES SHOWN ARE CLEAR INSIDE DIMENSIONS.
  5. IN ALL SYSTEMS OVER 2000 CFM AND LESS THAN 15,000 CFM, SMOKE DETECTORS SHALL BE INSTALLED IN ACCORDANCE WITH NFPA 12E IN THE RETURN DUCT DOWNSTREAM OF THE AIR HANDLING UNIT AND ALL FILTERS TO AUTOMATICALLY STOP THE FAN.
  6. PROVIDE UL LISTED 125°F FIRESTAT IN RETURN AIR OF EACH SYSTEM UNDER 2000 CFM TO SHUT DOWN THE FAN IN THE EVENT OF FIRE.
  7. PROVIDE UL RATED FIRE DAMPERS WHERE REQUIRED AT ALL DUCT PENETRATIONS OF FIRE-RATED ASSEMBLIES AND WHERE REQUIRED BY CODE, INCLUDING OUTSIDE AIR INTAKES AND EXHAUST FANS.
  8. CONDENSATE DRAINS TO BE PVC PIPE RUN TO PLUMBERS P-TRAP WITHIN FIVE FEET OF AIR HANDLING UNITS.
  9. ALL AIR HANDLING SYSTEMS TO BE BALANCED TO ASSURE PROPER AIR FLOWS PER PLANS.
  10. ALL THERMOSTATS TO BE AUTOMATIC CHANGEOVER WITH HEAT SWITCH.
  11. EXHAUST FAN SHALL BE CONTROLLED BY A SWITCH ON THE WALL IN THE SAME LOCATION AS LIGHT SWITCHES. PROVIDE BACK DRAFT DAMPER.
  12. PROVIDE AND INSTALL WATER PROOF GRILLE VENT IN PROPER ROOF LOCATION FOR PLUMBING FIXTURE EXHAUST.
  13. ALL SUPPLY AIR VENTS SHALL BE EQUIPPED WITH AIR CONTROL DAMPERS AT THE REGISTER.
  14. LOCATE OUTDOOR UNITS AS SHOWN ON ARCHITECTURAL DRAWINGS.
  15. REFRIGERANT LINES SHALL BE SIZED BY UNIT MANUFACTURER AND INSTALLED ACCORDING TO MANUFACTURER'S INSTRUCTIONS.
  16. FRESH AIR SHALL BE SUPPLIED TO EACH AIR HANDLER THROUGH EXTERIOR WALL DUCT SUPPLIED WITH A CONTROL DAMPER.
  17. ALL ELECTRICAL, MECHANICAL, AND PLUMBING PENETRATING FIRE WALLS SHALL BE FIRE CAULKED. (PENETRATIONS THROUGH RATED CONSTRUCTION SHALL BE SEALED WITH A MATERIAL CAPABLE OF PREVENTING THE PASSAGE OF FLAMES AND HOT GASES WHEN TESTED IN ACCORDANCE WITH ASTM-E8-14).
  18. ALL MECHANICAL SYMBOLS ARE DRAWN DIAGRAMMATICALLY. CONTRACTOR TO VERIFY WITH OWNER LOCATIONS OF VENTS, DAMPERS, REGISTERS, ETC.
  19. FLEXIBLE DUCTWORK LENGTH NOT TO EXCEED 12'-0". SUPPORT FLEX DUCT TO PREVENT SAGGING.
  20. REFER TO REFLECTED CEILING PLAN FOR FINAL GRILLE AND DIFFUSER LOCATIONS AND COORDINATE AS REQUIRED.
  21. FINAL LOCATION OF TEMPERATURE CONTROLS TO BE COORDINATED WITH OWNER AT JOB SITE.
  22. PROVIDE AND INSTALL SMOKE DETECTORS AS APPROVED BY LOCAL A.H.J.S. PLACE NEAR R/A AND S/A OPENINGS OF AHU AND PROVIDE, WITH ACCESS PANEL, WIRING BY ELECTRICAL CONTRACTOR.
  23. FRESH AIR INTAKES ARE REQUIRED TO HAVE MOTORIZED OR GRAVITY DAMPERS TO SHUT OFF WHEN SYSTEM IS NOT RUNNING.
  24. PROVIDE BIRD SCREENS AT ALL EXTERIOR MECHANICAL PENETRATIONS.
  25. COORDINATE WALL MOUNTED THERMOSTAT LOCATIONS WITH ALL OWNER FURNISHED ITEMS EITHER WALL MOUNTED OR FLOOR MOUNTED AGAINST PARTITIONS. REFER TO ARCHITECTURAL DRAWINGS.
  26. PROVIDE MIN 18 GA GALVANIZED SHEET METAL TO BLANK-OFF GABLE VENTS WHERE INTAKE/EXHAUST DUCTS OCCUR.



DIFFUSER SCHEDULE			
Mark No.	Service	Neck Size	Description
A	Supply Air	Ref. Plan	24" X 24" Adjustable Square Cone Diffuser, Price ASCDA w/ Insulated Back Panel
B	Supply Air	Ref. Plan	12" X 12" Adjustable Square Cone Diffuser, Price ASCDA w/ Insulated Back Panel
C	Exhaust	Ref. Plan	Eggcrate, Price Series 80
D	Return Air	Ref. Plan	24" X 24" Perforated, Ducted Return, Titus PAR

Exhaust Fan Schedule											
Tag	Service	Fan				Power		Make / Model	Remarks		
		Max. Airflow (CFM)	TSP ("wc)	HP	Watts	Amps	Volts			Phase	Hz
EF-1	Restroom Exhaust	1550	0.2	0.25	120	1	60	Greenheck CSP-A1550	1, 3		
EF-2	Restroom Exhaust	460	0.2		120	1	60	Greenheck CSP-A510	1, 3		
EF-3	Exhaust	80	0.1		19	N/A	120	1	60	Greenheck CSP-A110	2, 3

SPLIT SYSTEM SCHEDULE																				
AIR HANDLER										HEAT PUMP										
Tag	Area Served	Tons (Nominal)	Total CFM	O/A (CFM)	Make	Model	Motor HP	Cooling TMB H	Heat SMBH KW	Power VAC PH MCA	Tag	Make	Model	Power VAC PH MCA	Remarks					
AHU-1	Men's Restroom	5	1880	360	Goodman	ARUF81D14	1/3	62.6	38.6	8	208	1	60	CU-1	Goodman	GSZ140601	208	1	34.3	1, 2, 3, 4
AHU-2	Women's Restroom	2	910	180	Goodman	ARUF25B14	3/4	22.4	13.4	5	208	1	33	CU-2	Goodman	GSZ140241	208	1	14.6	1, 2, 3, 4

**SCHEDULES**  
 SCALE: N.T.S.

**DAMMON ENGINEERING, INC.**  
 LOUISIANA & MISSISSIPPI  
 Chief Engineer: Brian Misch, PE  
 554 Old Spanish Trail  
 Slidell, LA 70488  
 www.dammonengineering.com  
 info@dammonengineering.com  
 PH: 985-649-5832

#	DESCRIPTION	DATE

SEAL: \_\_\_\_\_

**NEW RESTROOMS BUILDING**  
**SNF POLYCHEMIE**  
 9030 PORT & HARBOR DR. RD. D  
 BAY ST. LOUIS, MS. 39260  
 JOB No: 2472  
 DATE: 01-25-2023  
 DRAWN BY: CKD  
 CHECKED BY: BAK

SHEET TITLE:  
 MECHANICAL PLAN  
 DRAWING NUMBER:  
**M101**  
 SHEET No: 11 of 1