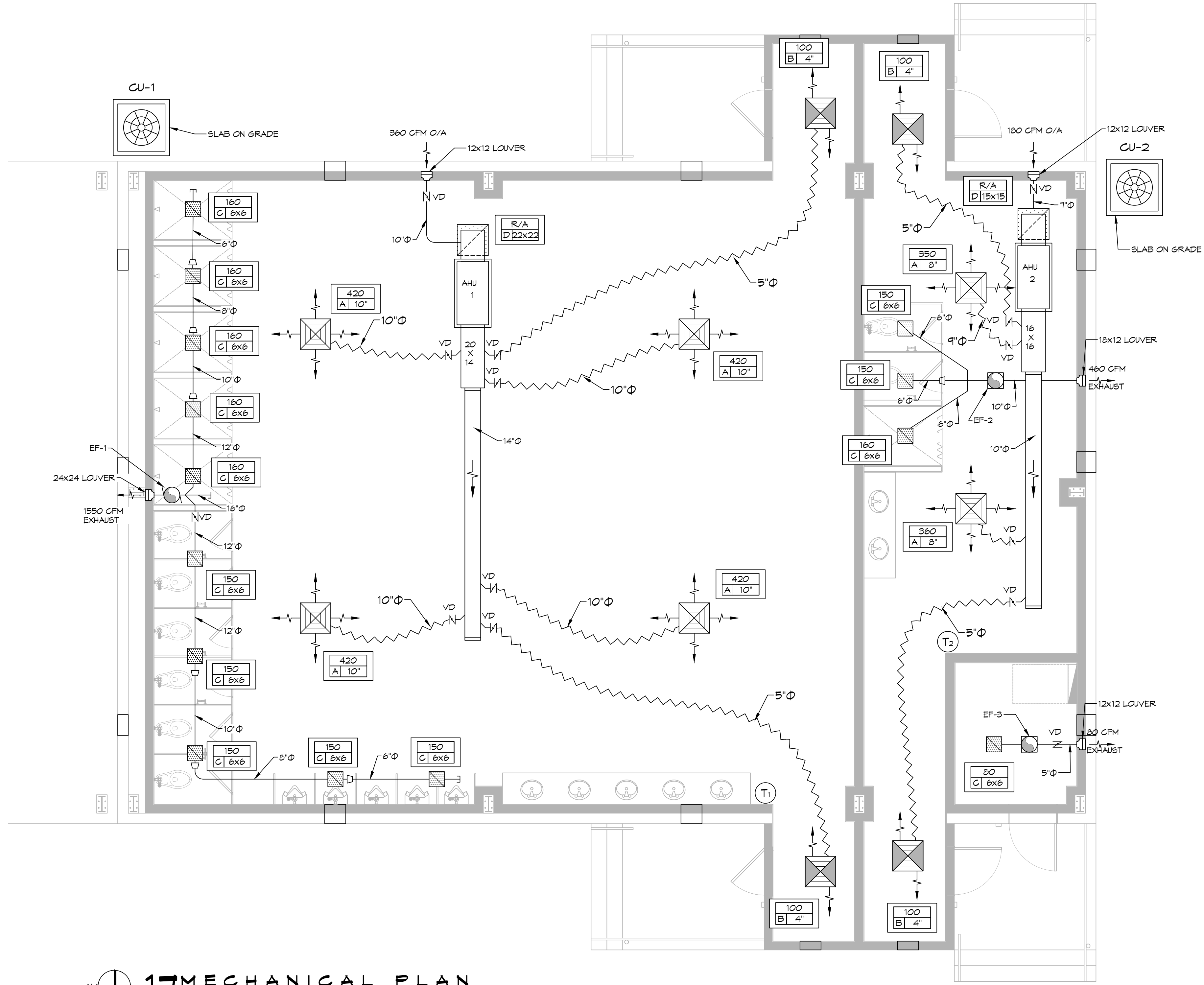


TYPICAL DETAILS
SCALE: N.T.S.



DIFFUSER SCHEDULE

Mark No.	Service	Neck Size	Description
A	Supply Air	Ref. Plan	24" X 24" Adjustable Square Cone Diffuser, Price ASCDA w/ Insulated Back Panel
B	Supply Air	Ref. Plan	12" X 12" Adjustable Square Cone Diffuser, Price ASCDA w/ Insulated Back Panel
C	Exhaust	Ref. Plan	Eggcrate, Price Series 80
D	Return Air	Ref. Plan	24" X 24" Perforated, Ducted Return, Titus PAR

1. Coordinate with Architect / Owner for colors and finish.

Exhaust Fan Schedule

Tag	Service	Fan				Power		Make / Model	Remarks		
		Max. Airflow (CFM)	TSP ("wc)	HP	Watts	Amps	Volts			Phase	Hz
EF-1	Restroom Exhaust	1550	0.2	0.25	52	120	1	60	Greenheck CSP-A1550	1, 3	
EF-2	Restroom Exhaust	460	0.2		19	120	1	60	Greenheck CSP-A510	1, 3	
EF-3	Exhaust	80	0.1		19	N/A	120	1	60	Greenheck CSP-A110	2, 3

1. Interlock with AHU for continuous operation.
2. Provide dedicated wall switch
3. Install per Manufacturer's recommendations.

SPLIT SYSTEM SCHEDULE

AIR HANDLER										HEAT PUMP										
Tag	Area Served	Tons (Nominal)	Total CFM	O/A (CFM)	Make	Model	Motor HP	Cooling TMB H	Heat SMBH KW	Power VAC PH MCA	Tag	Make	Model	Power VAC PH MCA	Remarks					
AHU-1	Men's Restroom	5	1880	360	Goodman	ARUF81D14	1/3	62.6	38.6	8	208	1	60	CU-1	Goodman	GSZ140601	208	1	34.3	1, 2, 3, 4
AHU-2	Women's Restroom	2	910	180	Goodman	ARUF25B14	3/4	22.4	13.4	5	208	1	33	CU-2	Goodman	GSZ140241	208	1	14.6	1, 2, 3, 4

NOTES:
1. Provide inlet filter, single point power connection, time delay relay, condensate overflow switch and programmable 7/24 thermostat with lockable cover.
2. Cooling capacities rated in accordance with AHRI standard 210/290 for ASHRAE standard design weather conditions in New Orleans, LA.
3. Install units in accordance with manufacturer's recommendations.
4. Provide new filters after commissioning and final acceptance.

SCHEDULES
SCALE: N.T.S.

DAMMON ENGINEERING, INC.
LOUISIANA & MISSISSIPPI
Chief Engineer: Brian A. Mistich, PE
554 Old Spanish Trail
Slidell, LA 70688
www.dammonengineering.com
info@dammonengineering.com
PH: 985-649-5832

REVISIONS

#	DESCRIPTION	DATE



NEW CHANGE HOUSE
SNF POLYCHEMIE
9030 PORT HARBOR DR. RD. D
BAY ST. LOUIS, MS. 39220
JOB No: 2472
DATE: 05-25-2023
DRAWN BY: GKD
CHECKED BY: BAK

SHEET TITLE:
MECHANICAL PLAN

DRAWING NUMBER:
M101

SHEET No: 12 of 15