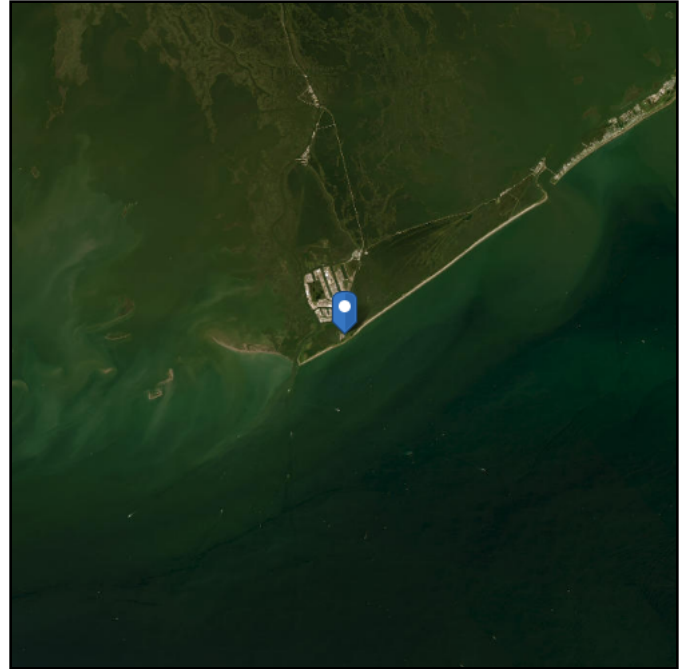
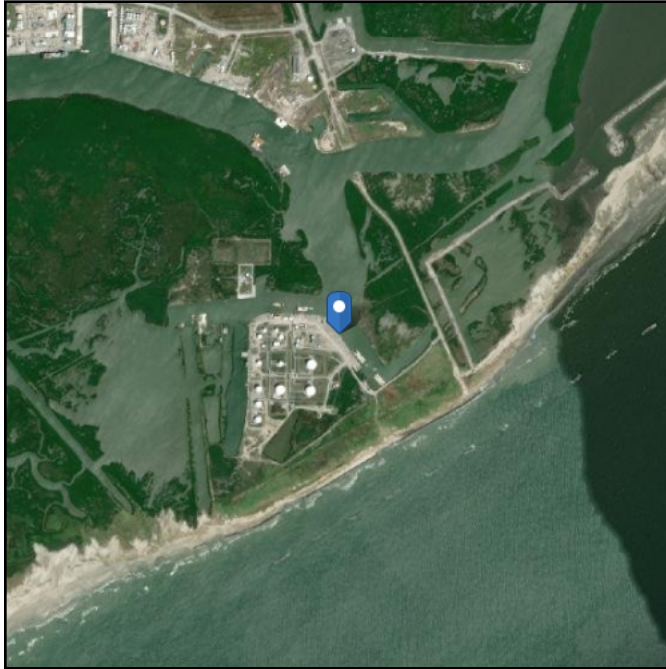


ASCE 7 Hazards Report

Address:
No Address at This Location

Standard: ASCE/SEI 7-16
Risk Category: IV
Soil Class: E - Soft Clay Soil

Latitude: 29.10546
Longitude: -90.19111
Elevation: 0.12438720214311999 ft (NAVD 88)



Wind

Results:

Wind Speed	190 Vmph
10-year MRI	86 Vmph
25-year MRI	107 Vmph
50-year MRI	120 Vmph
100-year MRI	133 Vmph

Data Source: ASCE/SEI 7-16, Fig. 26.5-1D and Figs. CC.2-1–CC.2-4, and Section 26.5.2
Date Accessed: Tue May 16 2023

Value provided is 3-second gust wind speeds at 33 ft above ground for Exposure C Category, based on linear interpolation between contours. Wind speeds are interpolated in accordance with the 7-16 Standard. Wind speeds correspond to approximately a 1.6% probability of exceedance in 50 years (annual exceedance probability = 0.00033, MRI = 3,000 years).

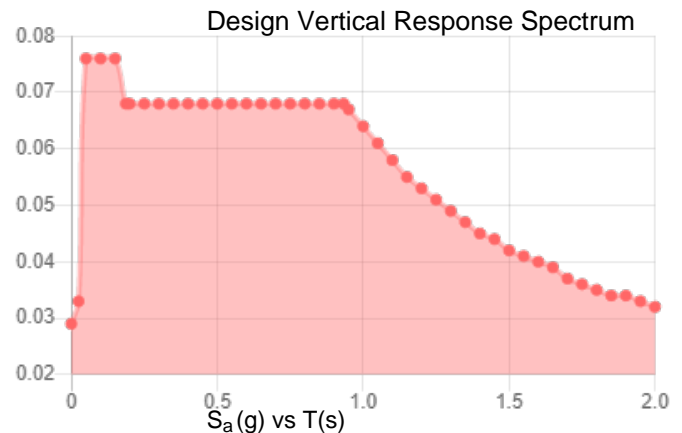
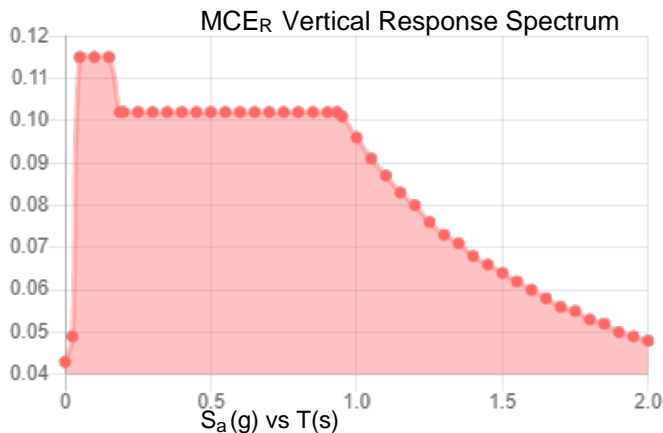
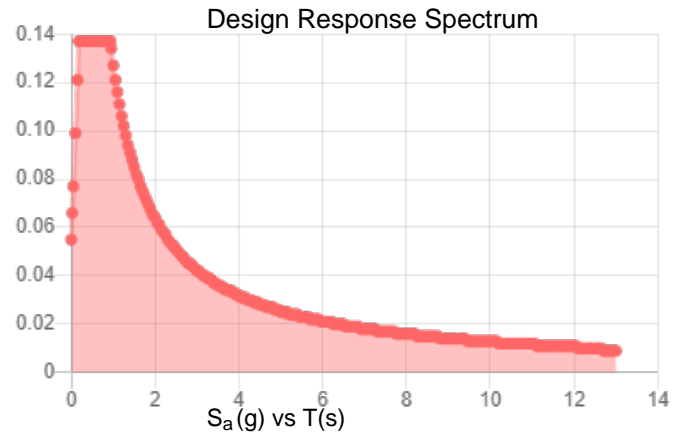
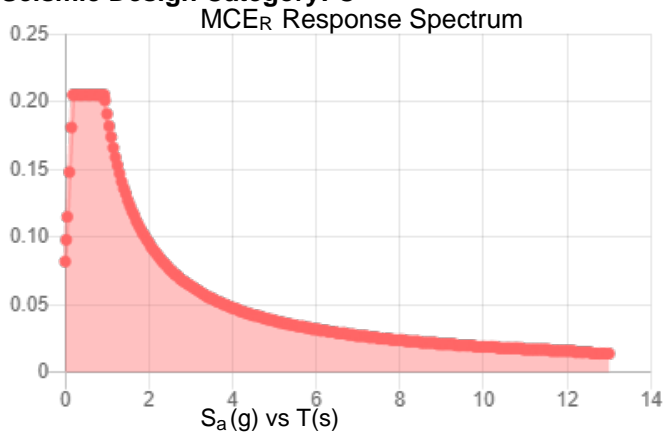
Site is in a hurricane-prone region as defined in ASCE/SEI 7-16 Section 26.2. Glazed openings shall be protected against wind-borne debris as specified in Section 26.12.3.

Site Soil Class:

Results:

S_S :	0.085	S_{D1} :	0.127
S_1 :	0.045	T_L :	12
F_a :	2.4	PGA :	0.042
F_v :	4.2	PGA _M :	0.101
S_{MS} :	0.205	F_{PGA} :	2.4
S_{M1} :	0.191	I_e :	1.5
S_{DS} :	0.137	C_v :	0.7

Seismic Design Category: C



Data Accessed:

Tue May 16 2023

Date Source:

USGS Seismic Design Maps based on ASCE/SEI 7-16 and ASCE/SEI 7-16 Table 1.5-2. Additional data for site-specific ground motion procedures in accordance with ASCE/SEI 7-16 Ch. 21 are available from USGS.

Ice

Results:

Ice Thickness: 0.25 in.
Concurrent Temperature: 25 F
Gust Speed 30 mph

Data Source: Standard ASCE/SEI 7-16, Figs. 10-2 through 10-8

Date Accessed: Tue May 16 2023

Ice thicknesses on structures in exposed locations at elevations higher than the surrounding terrain and in valleys and gorges may exceed the mapped values.

Values provided are equivalent radial ice thicknesses due to freezing rain with concurrent 3-second gust speeds, for a 500-year mean recurrence interval, and temperatures concurrent with ice thicknesses due to freezing rain. Thicknesses for ice accretions caused by other sources shall be obtained from local meteorological studies. Ice thicknesses in exposed locations at elevations higher than the surrounding terrain and in valleys and gorges may exceed the mapped values.

Snow

Results:

Ground Snow Load, p_g : 0 lb/ft²
Mapped Elevation: 0.1 ft

Data Source: ASCE/SEI 7-16, Table 7.2-8

Date Accessed: Tue May 16 2023

Values provided are ground snow loads. In areas designated "case study required," extreme local variations in ground snow loads preclude mapping at this scale. Site-specific case studies are required to establish ground snow loads at elevations not covered.

Snow load values are mapped to a 0.5 mile resolution. This resolution can create a mismatch between the mapped elevation and the site-specific elevation in topographically complex areas. Engineers should consult the local authority having jurisdiction in locations where the reported 'elevation' and 'mapped elevation' differ significantly from each other.

Rain

Results:

15-minute Precipitation Intensity: 11.98 in./h

60-minute Precipitation Intensity: 7.5 in./h

Data Source: NOAA National Weather Service, Precipitation Frequency Data Server, Atlas 14
(<https://www.nws.noaa.gov/oh/hdsc/>)

Date Accessed: Tue May 16 2023

Flood

Results:

Flood Zone Categorization: Some areas are not in the National Flood Hazard Layer. Consult the Authority Having Jurisdiction.

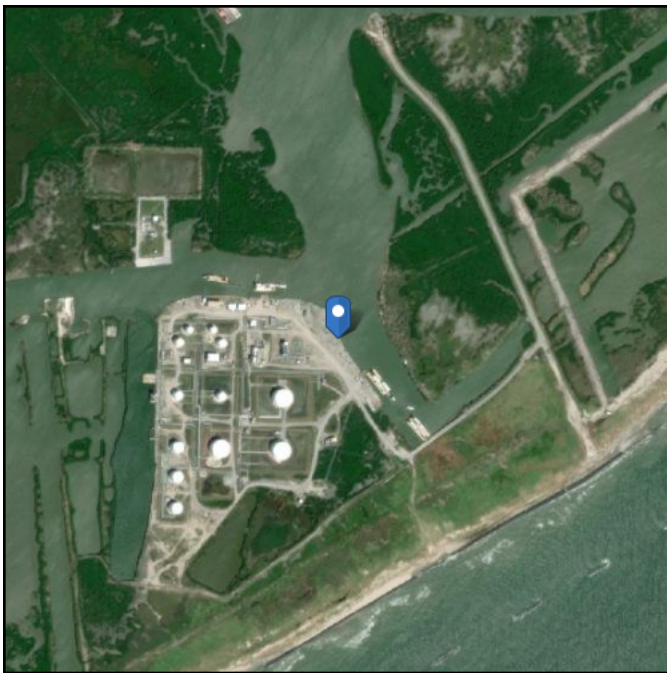
Base Flood Elevation: Refer to map for local elevations and interpolate according to the Authority Having Jurisdiction.

Data Source: FEMA National Flood Hazard Layer - Effective Flood Hazard Layer for US, where modernized (<https://msc.fema.gov/portal/search>)

Date Accessed: Tue May 16 2023

FIRM Panel: If available, download FIRM panel [here](#)

Insurance Study Note: Download FEMA Flood Insurance Study for this area [here](#)



Tsunami

Results:

Tsunami: Not in mapped tsunami design zone.

Data Source: [ASCE Tsunami Design Geodatabase](#)

Date Accessed: Tue May 16 2023

The ASCE 7 Hazard Tool is provided for your convenience, for informational purposes only, and is provided “as is” and without warranties of any kind. The location data included herein has been obtained from information developed, produced, and maintained by third party providers; or has been extrapolated from maps incorporated in the ASCE 7 standard. While ASCE has made every effort to use data obtained from reliable sources or methodologies, ASCE does not make any representations or warranties as to the accuracy, completeness, reliability, currency, or quality of any data provided herein. Any third-party links provided by this Tool should not be construed as an endorsement, affiliation, relationship, or sponsorship of such third-party content by or from ASCE.

ASCE does not intend, nor should anyone interpret, the results provided by this Tool to replace the sound judgment of a competent professional, having knowledge and experience in the appropriate field(s) of practice, nor to substitute for the standard of care required of such professionals in interpreting and applying the contents of this Tool or the ASCE 7 standard.

In using this Tool, you expressly assume all risks associated with your use. Under no circumstances shall ASCE or its officers, directors, employees, members, affiliates, or agents be liable to you or any other person for any direct, indirect, special, incidental, or consequential damages arising from or related to your use of, or reliance on, the Tool or any information obtained therein. To the fullest extent permitted by law, you agree to release and hold harmless ASCE from any and all liability of any nature arising out of or resulting from any use of data provided by the ASCE 7 Hazard Tool.