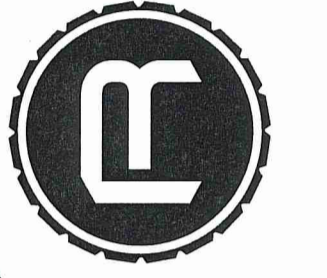
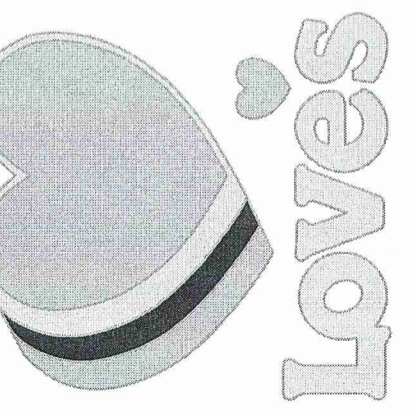




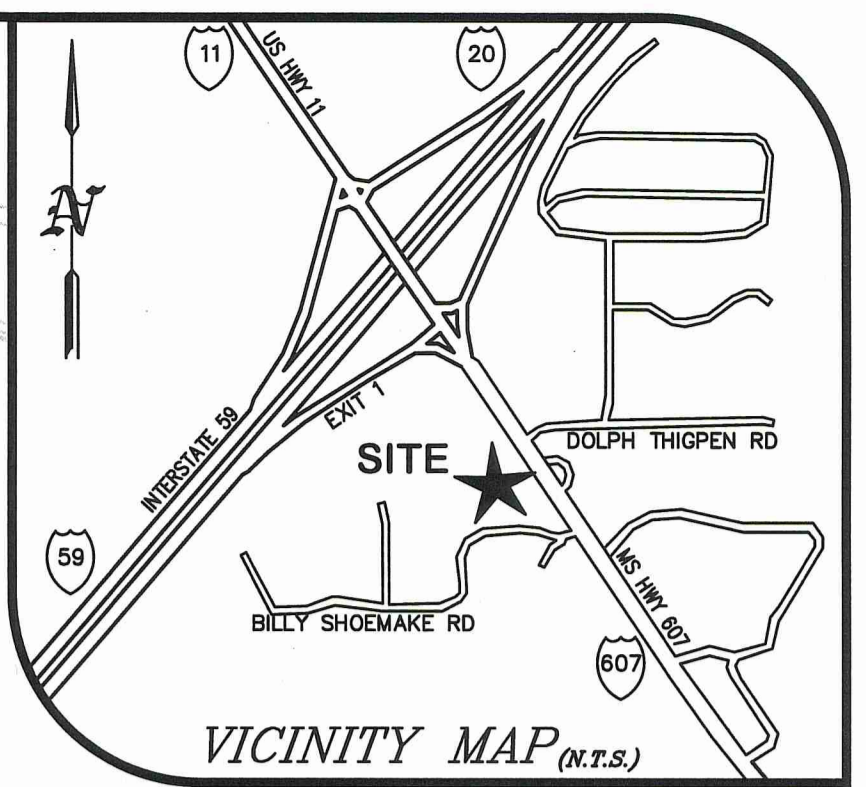
RESOURCECONSULTING
CIVIL ENGINEERING
6700 Jefferson Highway - Resource Suite 4A
Baton Rouge, Louisiana 70806
ResourceConsulting@hotmail.com
Tel: (225) 751-9909, Fax (225) 756-6672



LOVE'S TRAVEL STOP
INTERSTATE 59 EXIT 1 @ MS HIGHWAY 607
PEARL RIVER COUNTY, MISSISSIPPI



C5.0



LEGEND FOR PROPOSED IMPROVEMENTS

- PROPERTY LINE / R.O.W.
- PROPOSED BUILDING
- PROPOSED CURB AND GUTTER
- PROPOSED PARKING SPACES
- PROPOSED FENCING
- SYSL/4" - SINGLE YELLOW SOLID LINE / 4 INCH THICK
- DYSL/5" - DOUBLE YELLOW SOLID LINE / 5 INCH THICK EACH
- SWSL/24" - SINGLE WHITE SOLID LINE / 24 INCH THICK
- SWSL/8" - SINGLE WHITE SOLID LINE / 8 INCH THICK
- SWSL/4" - SINGLE WHITE SOLID LINE / 4 INCH THICK
- SWDL/4" - SINGLE WHITE DASHED LINE / 4 INCH THICK

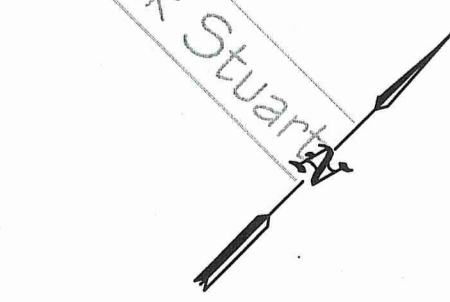
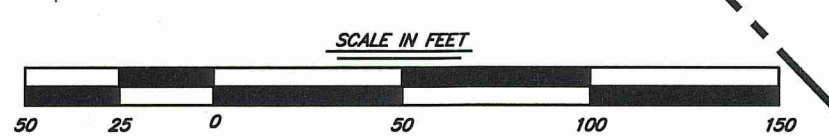
EXISTING LEGEND

- SUBJECT PROPERTY BOUNDARY LINE
- ADJACENT BOUNDARY LINES
- OLD WIRE FENCE
- "40" LINES
- LIMITS OF EASEMENT
- BURIED FIBER OPTIC LINE
- OVERHEAD UTILITY LINES
- MAJOR CONTOUR
- MINOR CONTOUR
- DRAINAGE PIPE
- SIGNIFICANT DRAINAGE FLOWLINE
- APPROXIMATE FLOOD ZONE LOCATION
- NO HIGHWAY ACCESS
- PAINT STRIPE
- 1/2" IRON REBAR SET
- IRON PIN FOUND
- FENCE CORNER FOUND
- UTILITY POLE
- AS PER SURVEY
- AS PER RECORD
- RIGHT-OF-WAY
- CONTOUR ELEVATION
- REINFORCED CONCRETE PIPE
- CORRUGATED METAL PIPE
- ROAD SIGN POST

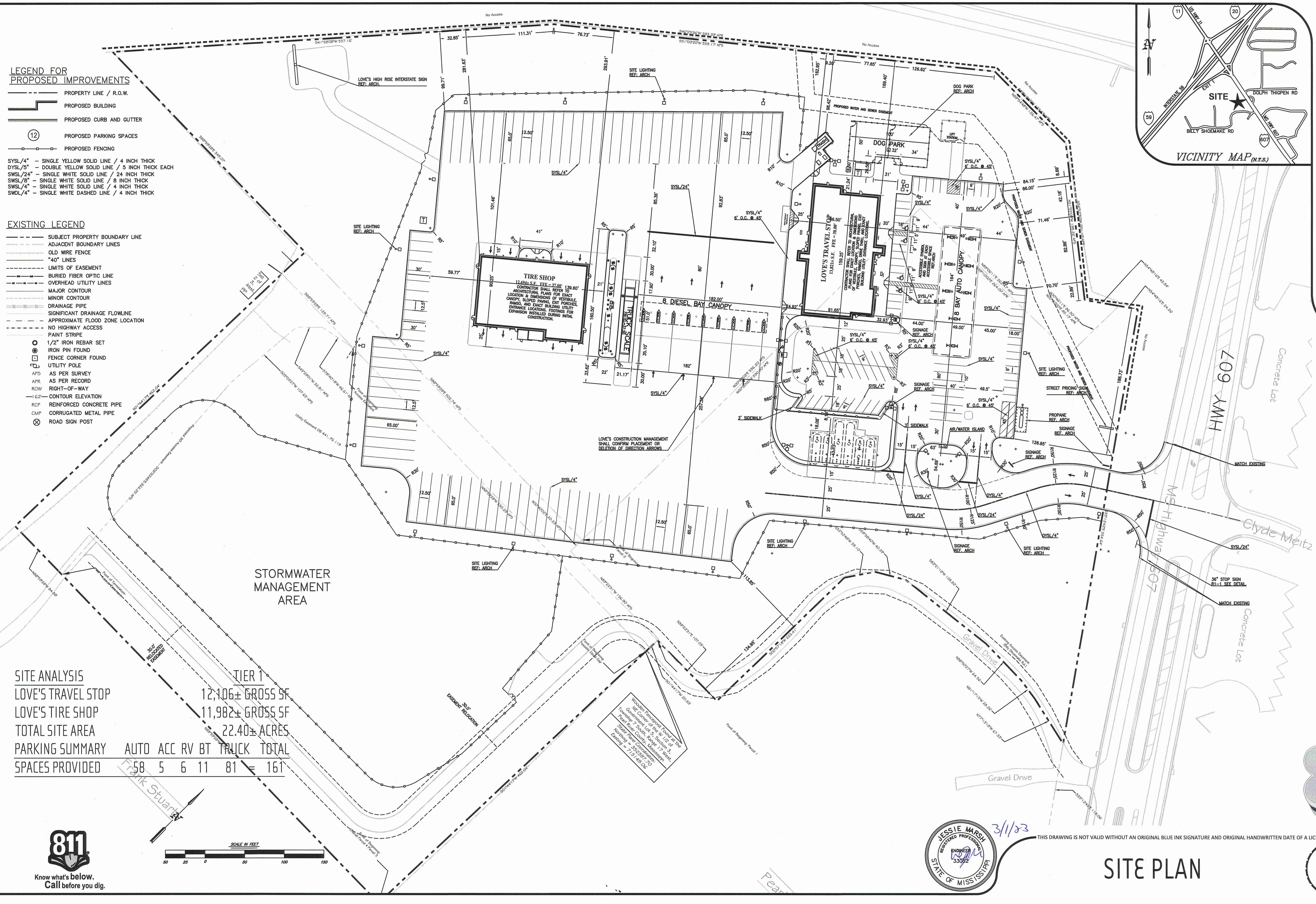
SITE ANALYSIS

LOVE'S TRAVEL STOP	12,106± GROSS SF
LOVE'S TIRE SHOP	11,982± GROSS SF
TOTAL SITE AREA	22.40± ACRES
PARKING SUMMARY	AUTO ACC RV BT TRUCK TOTAL
SPACES PROVIDED	58 5 6 11 81 = 161

STORMWATER MANAGEMENT AREA



K:\200325 - Pearl River County MS Love's 1-59 @ MS Hwy 607 SEQ\Design\200325.rvt design.dwg, C5.0 SITE PLAN, 3/1/2023 4:35:10 PM, Jessie, Resource Consulting, LLC copyright.



THIS DRAWING IS NOT VALID WITHOUT AN ORIGINAL BLUE INK SIGNATURE AND ORIGINAL HANDWRITTEN DATE OF A LICENSED PROFESSIONAL ENGINEER.

SITE PLAN