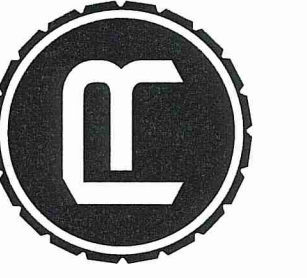
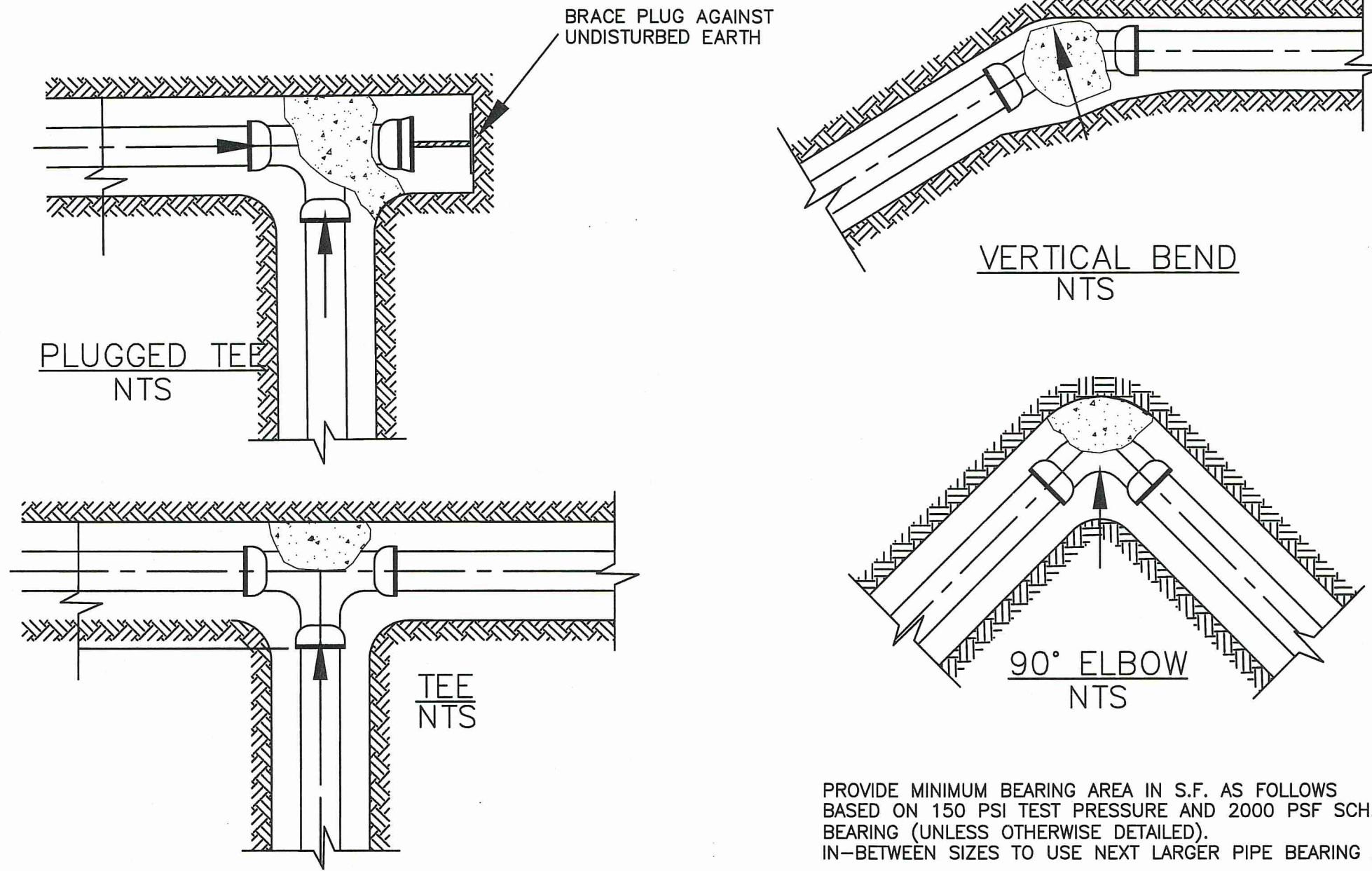
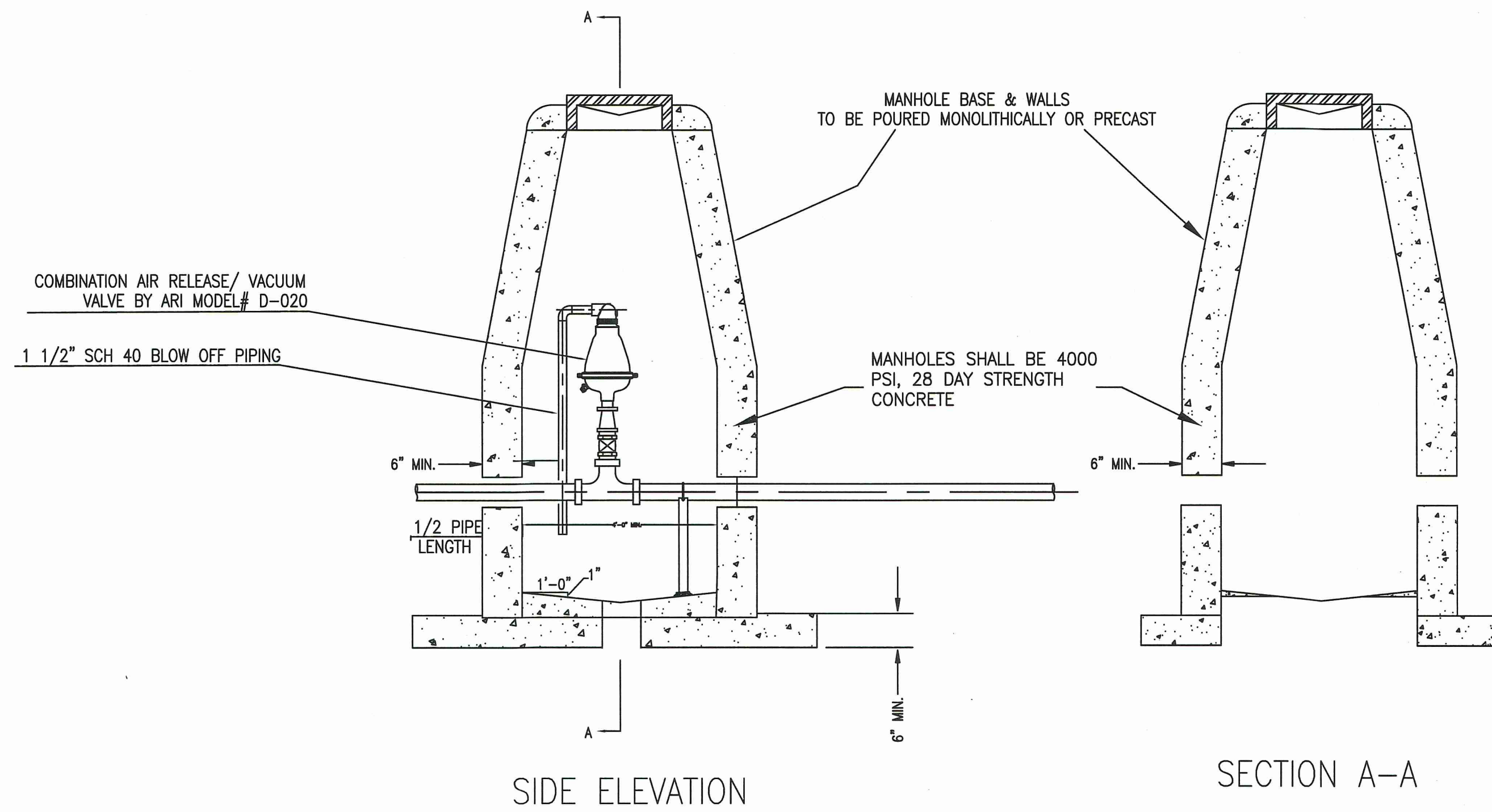




RESOURCECONSULTING
CIVIL ENGINEERING
6700 Jefferson Highway - Resource Suite 4A
Baton Rouge, Louisiana 70806
ResourceConsulting@hotmail.com
Tel: (225) 761-9909, Fax (225) 766-6672



AIR RELEASE VALVE DETAIL



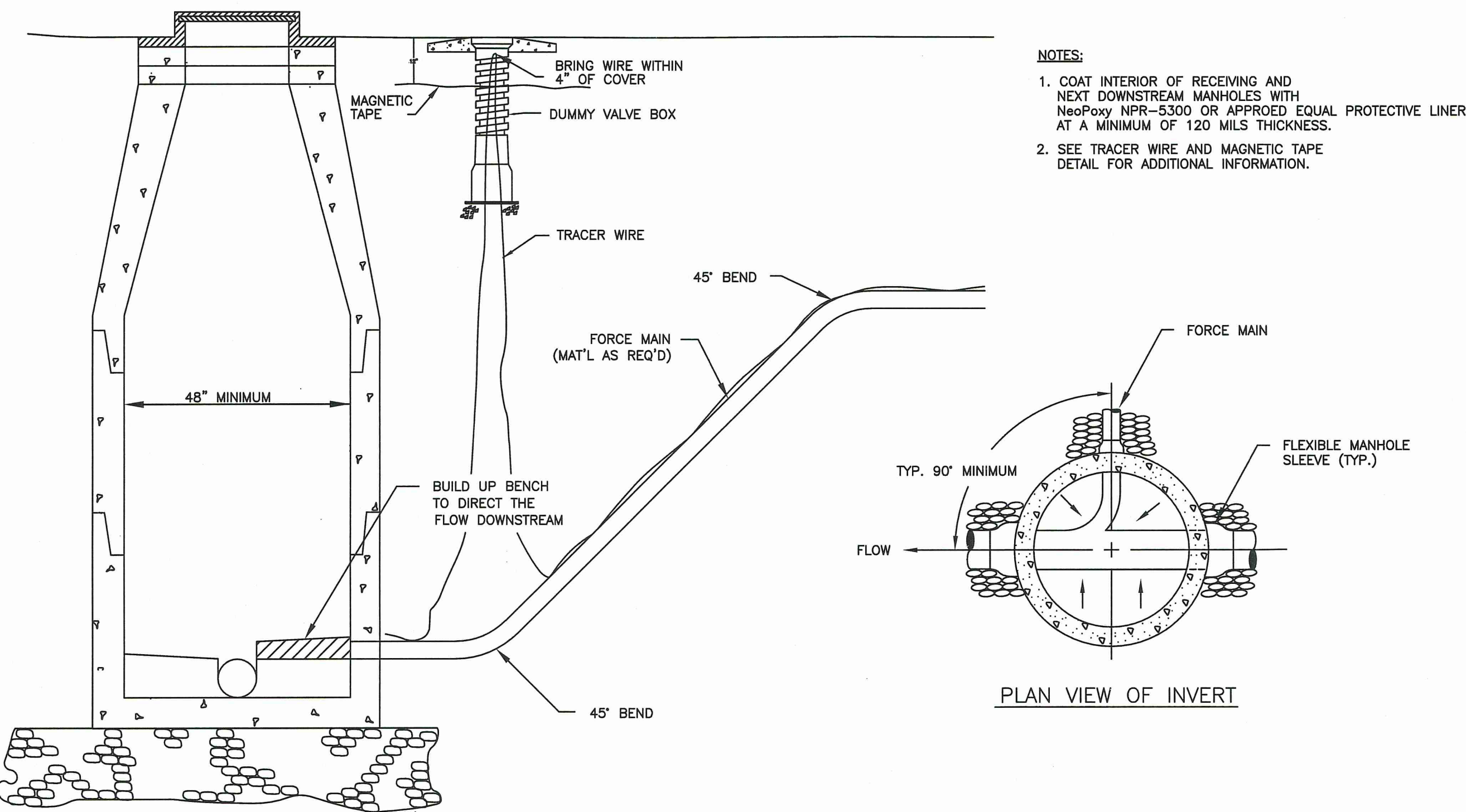
PROVIDE MINIMUM BEARING AREA IN S.F. AS FOLLOWS
BASED ON 150 PSI TEST PRESSURE AND 2000 PSF SCH.
BEARING (UNLESS OTHERWISE DETAILED).
IN-BETWEEN SIZES TO USE NEXT LARGER PIPE BEARING AREAS.

PIPE SIZE	TEE DEADENDS	11 1/4' BEND	22 1/2' BEND	45' BEND	90' BEND
3" to 4"	1.0	0.5	0.5	0.8	1.3
6"	2.2	0.5	0.8	1.5	3.0
8"	3.8	0.8	1.5	2.9	5.3
10"	6.0	1.2	2.3	4.5	8.4
12"	8.5	1.7	3.3	6.5	12.1

1. ALL BLOCKS MUST BEAR AGAINST UNDISTURBED EARTH.
2. ARROWS INDICATE DIRECTION OF THRUST.
3. ALL FITTINGS SHOWN IN PLAN EXCEPT VERTICAL BEND.
4. CONCRETE COMPRESSIVE STRENGTH SHALL BE MINIMUM 3000 PSI AT 28 DAYS.

THRUST BLOCK DETAIL
N.T.S.

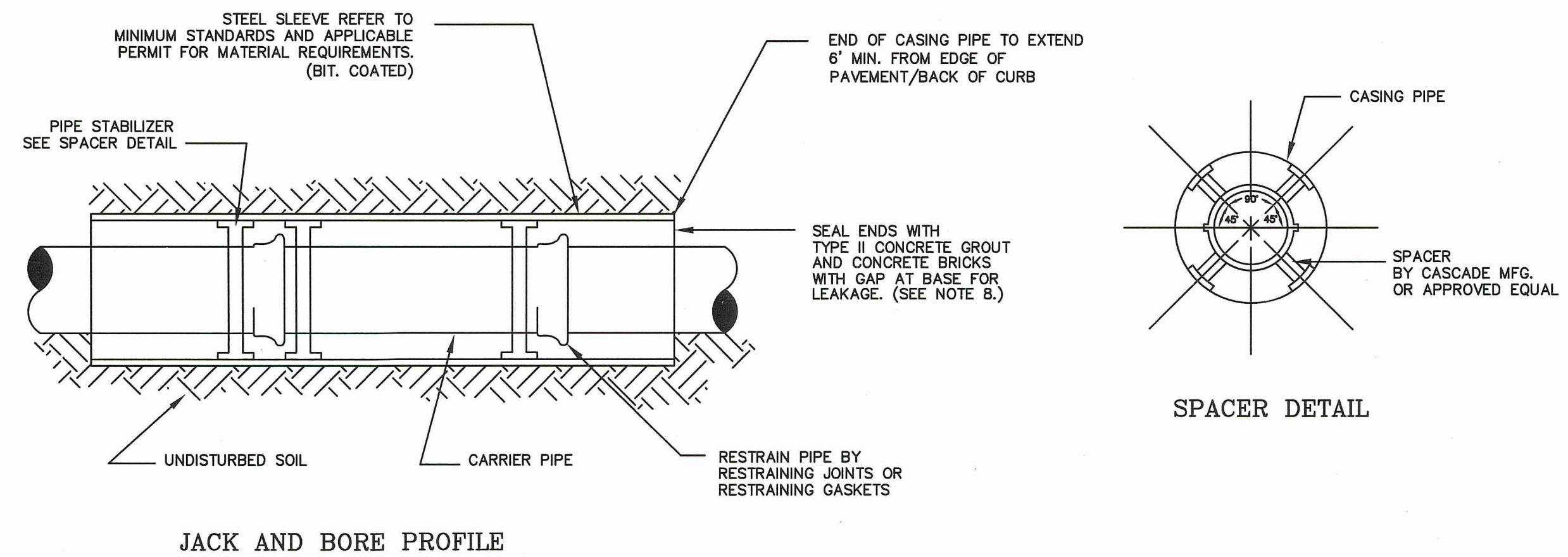
NICHOLSON WATER AND SEWER ASSOCIATION
INTERSTATE 59 EXIT 1 @ MS HWY 607
PEARL RIVER COUNTY, MISSISSIPPI



- NOTES:**
1. COAT INTERIOR OF RECEIVING AND NEXT DOWNSTREAM MANHOLES WITH NeoFoxy NFR-3300 OR APPROX EQUAL PROTECTIVE LINER AT A MINIMUM OF 120 MILS THICKNESS.
 2. SEE TRACER WIRE AND MAGNETIC TAPE DETAIL FOR ADDITIONAL INFORMATION.

- NOTES:**
1. REFER TO APPLICABLE PERMIT FOR MINIMUM REQUIREMENTS GOVERNING HIGHWAY OR RAILROAD UNDERCROSSINGS.
 2. THE DIAMETER AND THICKNESS OF THE CASING PIPE SHALL BE AS LISTED IN THE TABLE SHOWN IN THIS DETAIL.
 3. SEE MINIMUM STANDARDS AND AGENCY PERMIT FOR LENGTH AND DEPTH REQUIREMENTS.
 4. USE CASING SPACERS (SEE DETAIL) TO MOVE CARRIER PIPE INTO CASING PIPE. SPACING OF SPACERS WILL BE DICTATED BY THE LENGTH OF CASING PIPE AND NUMBER OF JOINTS OF CARRIER PIPE.
 5. USE A MINIMUM OF 2 SPACERS PER JOINT OF PIPE.
 6. THERE SHALL BE NO WELDING OF CASING UNDER PAVEMENT.
 7. IN CASE OF A CONFLICT BETWEEN THIS DETAIL, THE CWS MINIMUM STANDARDS, AND A PERMIT, THE STRICTEST REQUIREMENT SHALL GOVERN.
 8. SEAL CASING ENDS WITH TYPE II CONCRETE GROUT AND CONCRETE BRICKS, SO AS TO PREVENT THE ENTRANCE OF SOIL. LEAVE A GAP TO ALLOW LEAKAGE TO PASS IN CASE OF A MAIN BREAK.
 9. FOR FURTHER REQUIREMENTS AND CLARIFICATIONS, SEE THE MINIMUM STANDARDS.

RESTRAINED JOINT DIP CARRIER PIPE SIZE (INCHES)	MINIMUM CASING SIZE (INCHES)	MINIMUM CASING THICKNESS (INCHES)
4	14	0.250
6	16	0.281
8	18	0.312
10	20	0.375
12	24	0.375
14	26	0.438
16	30	0.469
18	32	0.500
20	36	0.532
24	42	0.625



JACK AND BORE PROFILE
PIPE AND CASING JACK AND BORE



Know what's below.
Call before you dig.



THIS DRAWING IS NOT VALID WITHOUT AN ORIGINAL BLUE INK SIGNATURE AND ORIGINAL HANDWRITTEN DATE OF A LICENSED PROFESSIONAL ENGINEER.

LIFT STATION DETAILS

U3.4