

STIPULATION FOR REUSE  
 THIS DRAWING HAS BEEN PREPARED FOR  
 USE ON A SPECIFIC SITE AT  
 THE LOCATION AND DATE SPECIFICALLY  
 CONTAINED HEREIN. IT IS NOT TO BE  
 REPRODUCED OR USED FOR ANY OTHER  
 PROJECT, SITE, OR DATE WITHOUT THE  
 WRITTEN PERMISSION OF HARRISON FRENCH  
 & ASSOCIATES, LTD. ANY REUSE OF THIS  
 DRAWING FOR ANY OTHER PROJECT IS  
 AT THE USER'S SOLE RISK AND MAY BE  
 CONSIDERED A VIOLATION OF THE  
 PROFESSIONAL ENGINEERING BOARD OF  
 ARKANSAS RULES AND REGULATIONS.

**Love's**  
 STORE NUMBER: 860  
 I-59, EXIT 1  
 NICHOLSON, MS 39466  
 JOB NUMBER: 03-23-30009

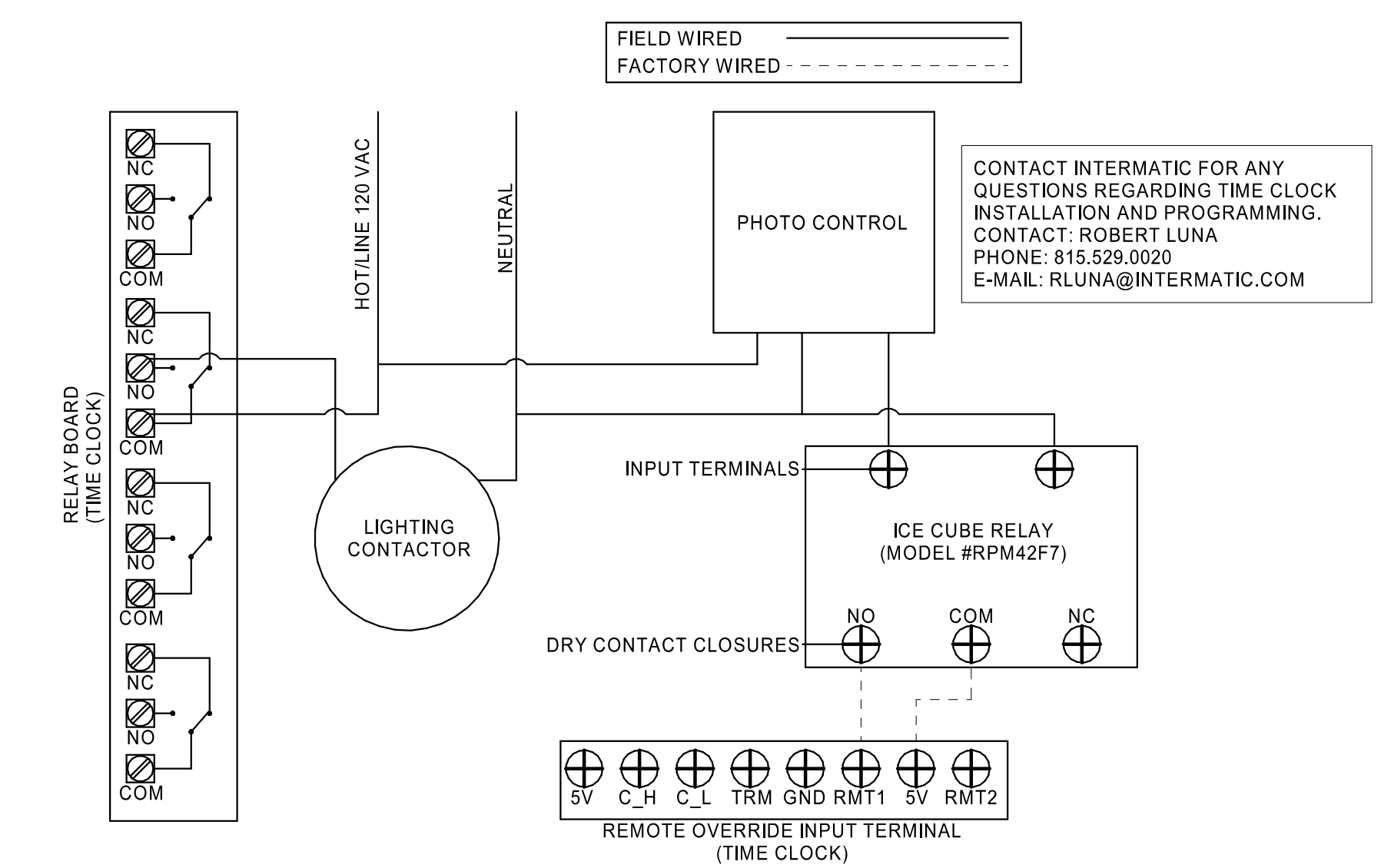
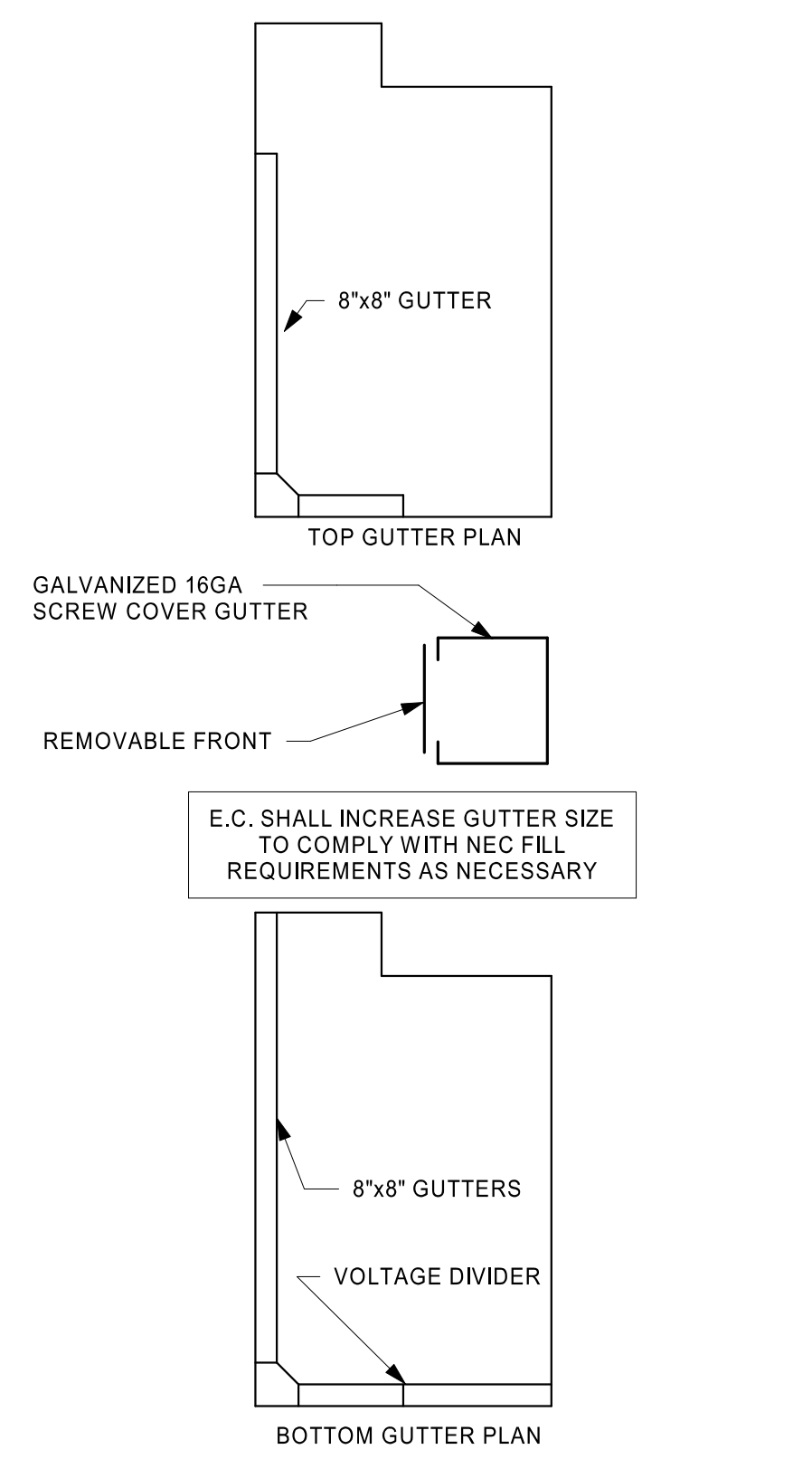
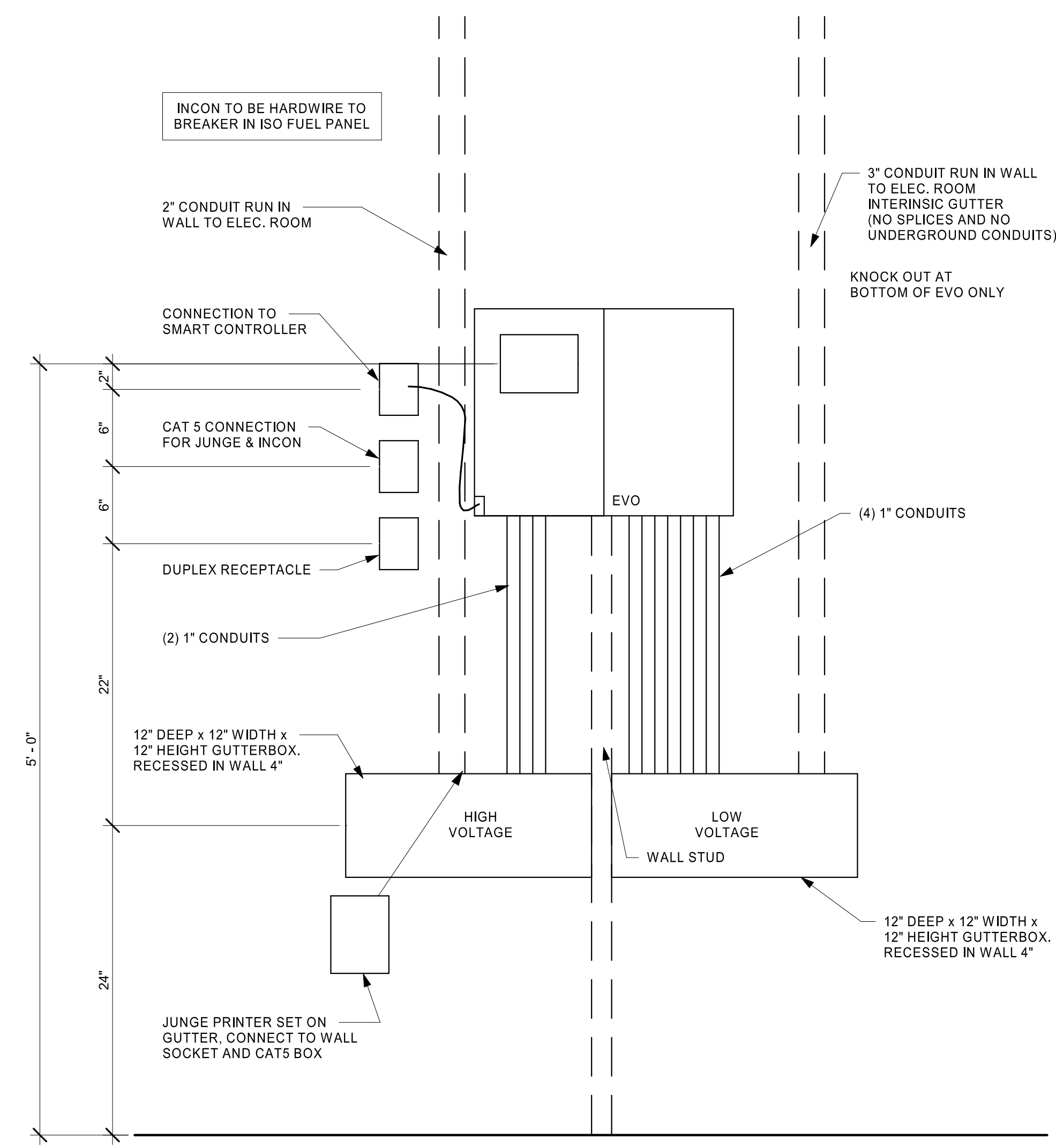
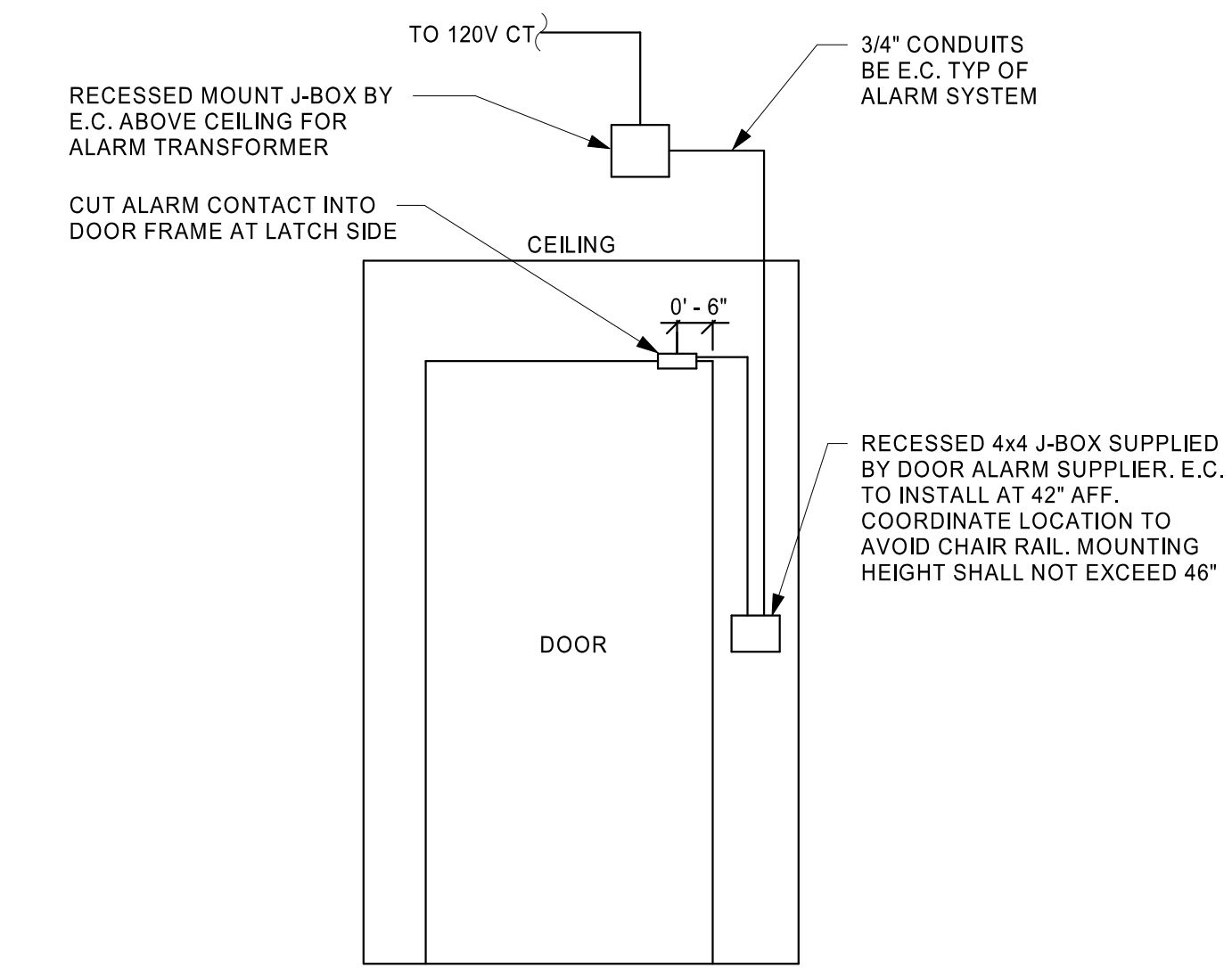
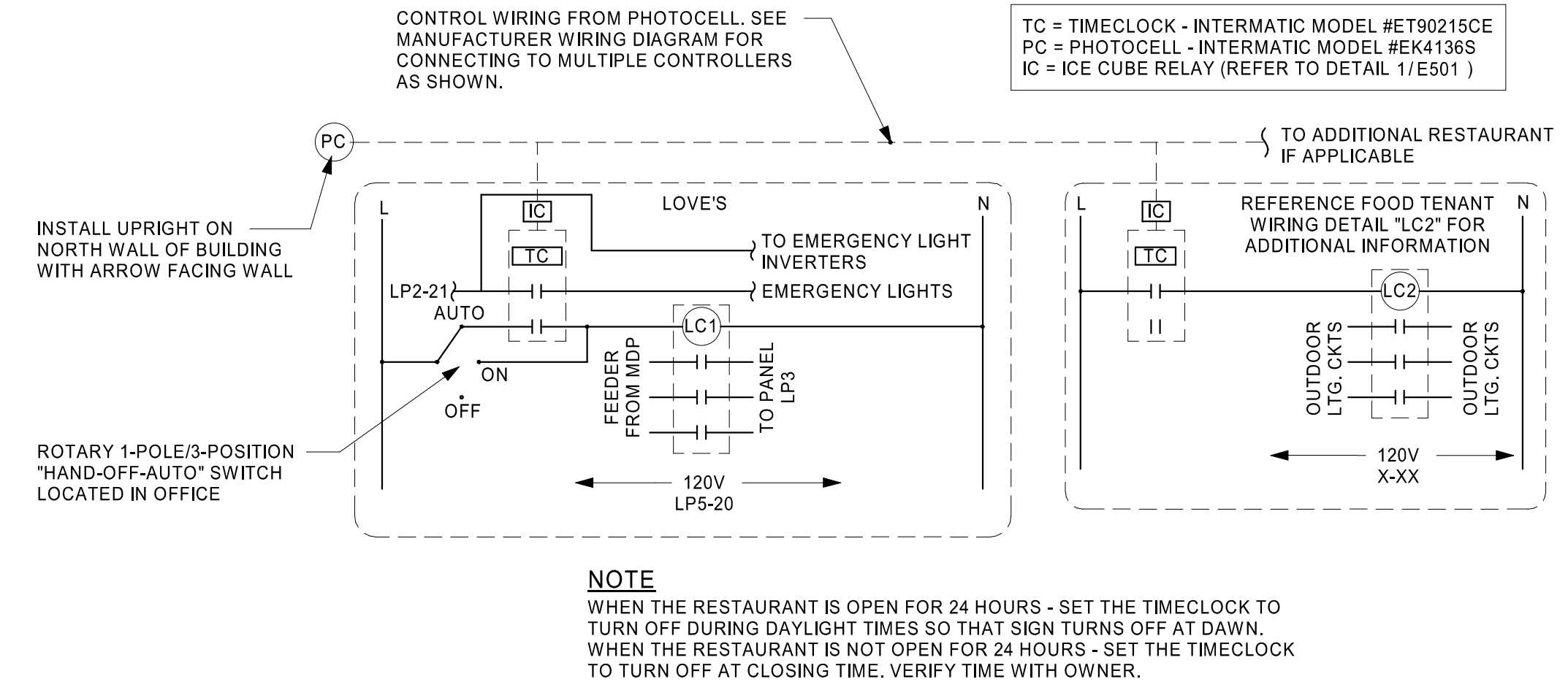
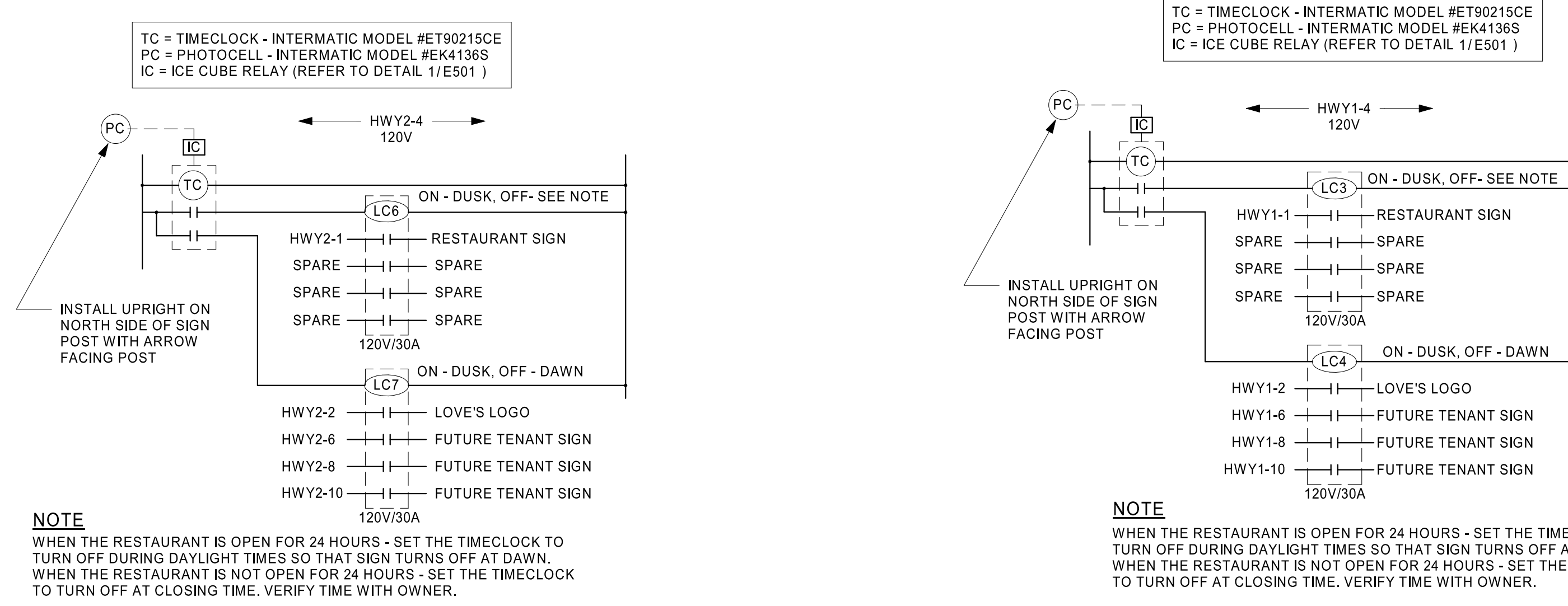
ISSUE BLOCK


CHECKED BY: CAR  
 DRAWN BY: SED  
 DOCUMENT DATE: 2/7/2023  
 PROTO: TIER 1 180  
 PROTO CYCLE: Q4 - 2022



ELECTRICAL  
 DETAILS

SHEET:  
**E501**



07/2023 1:16:07 AM  
 C:\Users\luna\Documents\2023 Revit Projects\Love's\_Arkansas\_MS\_AEPF\_T2\_180\_LPT\_HFA\_Summary.rvt  
 47924501-ELECTRICAL DETAILS