

STIPULATION FOR REUSE
 THIS DRAWING IS PREPARED FOR
 USE ON A SPECIFIC SITE AT
 CONTRACTOR'S RISK. IT IS NOT
 TO BE REUSED FOR ANY OTHER
 PROJECT WITHOUT THE WRITTEN
 PERMISSION OF HFA. ANY REUSE
 OF THIS DRAWING FOR ANY OTHER
 PROJECT WITHOUT THE WRITTEN
 PERMISSION OF HFA IS A VIOLATION
 OF THE PROFESSIONAL ENGINEER'S
 LICENSE AND MAY BE SUBJECT TO
 PENALTY UNDER THE PROFESSIONAL
 ENGINEERING ACT AND THE
 PENALTY LAWS.

Loves
 STORE NUMBER: 860
 I-59, EXIT 1
 NICHOLSON, MS 39466
 JOB NUMBER: 03-23-30009

ISSUE BLOCK

CHECKED BY: JKR
 DRAWN BY: PRC
 DOCUMENT DATE: 2/7/2023
 PROTO: SPEEDCO_4_BAY
 PROTO CYCLE: Q4 - 2022



2023.02.07 13:35:57-06'00"

PLUMBING
 DETAILS

SHEET:
 SDP301

BUILDING AIR COMPRESSOR / DRYER

BRAND	DESCRIPTION	MODEL
CHAMPION	COMPRESSOR	HRA15-12
CHAMPION	DRYER	CRN50

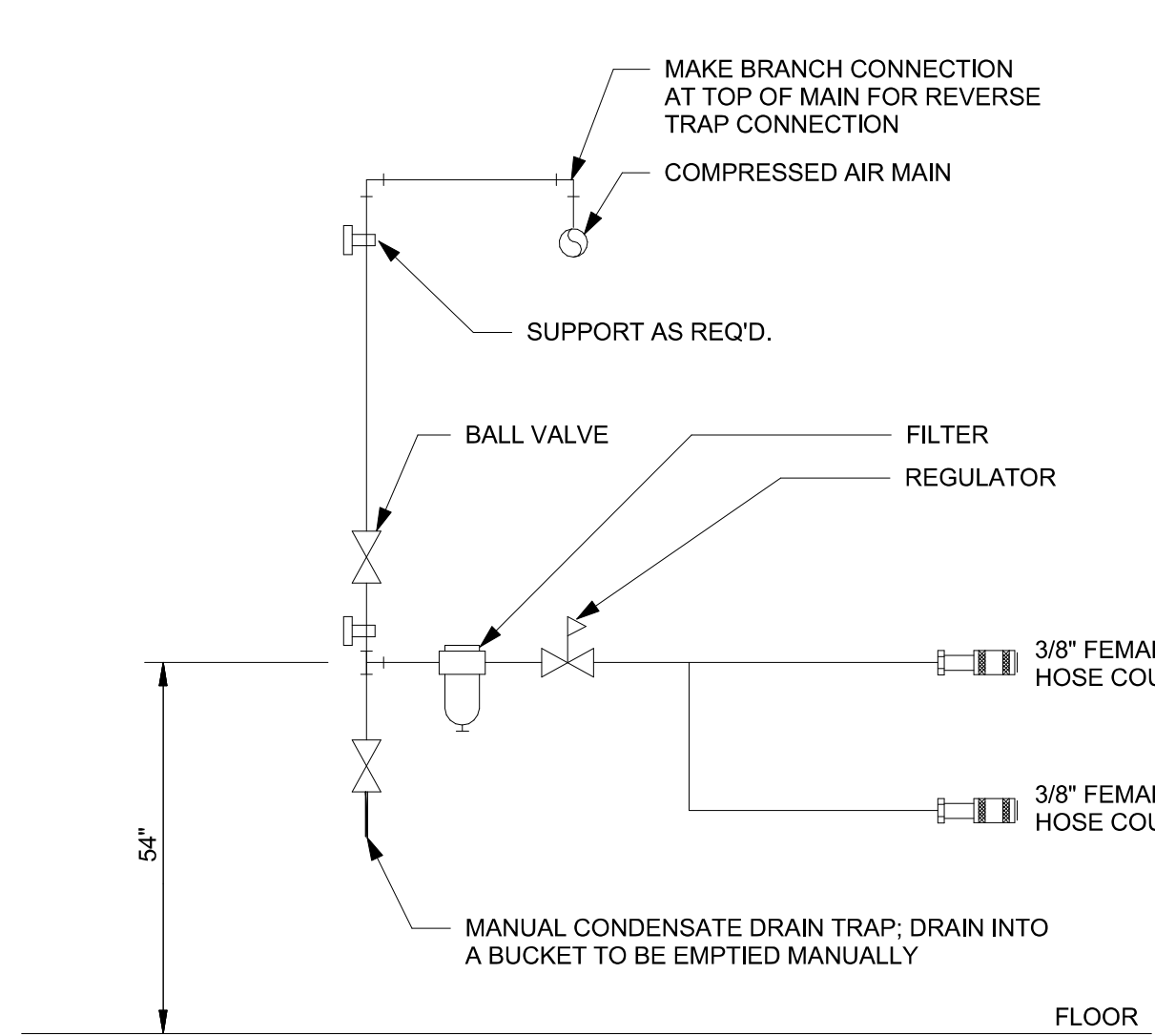
CONTACT INFO:
 VSA INC.
 STEPHEN BETHEA
 214.543.6771
 SBETHEA@CENTURYTEL.NET

AIR FITTINGS

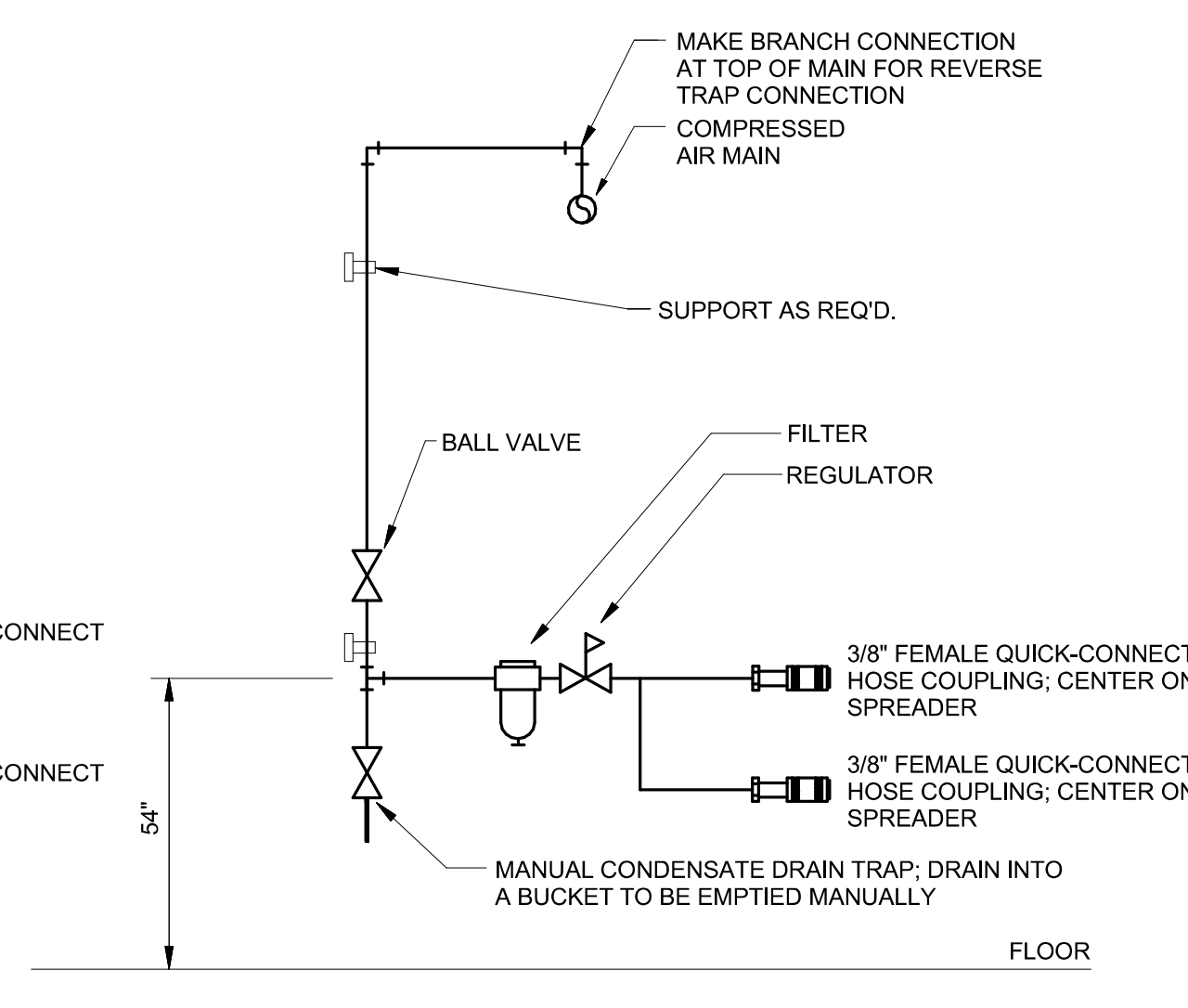
- (14) - 3/8" QUICK COUPLINGS
- (12) - FILTER
- (12) - REGULATOR
- (10) - LUBRICATOR
- (32) - BALL VALVES
- (6) - 1/2" AIR REEL
- (6) - 3/8" AIR REEL
- (2) - TUFFY I-25 (SUPPLIED BY TUFFY)

REFER TO DETAILED EQUIPMENT LIST ON ARCHITECTURAL SCHEDULES FOR A COMPLETE LIST OF ALL EQUIPMENT PROVIDED

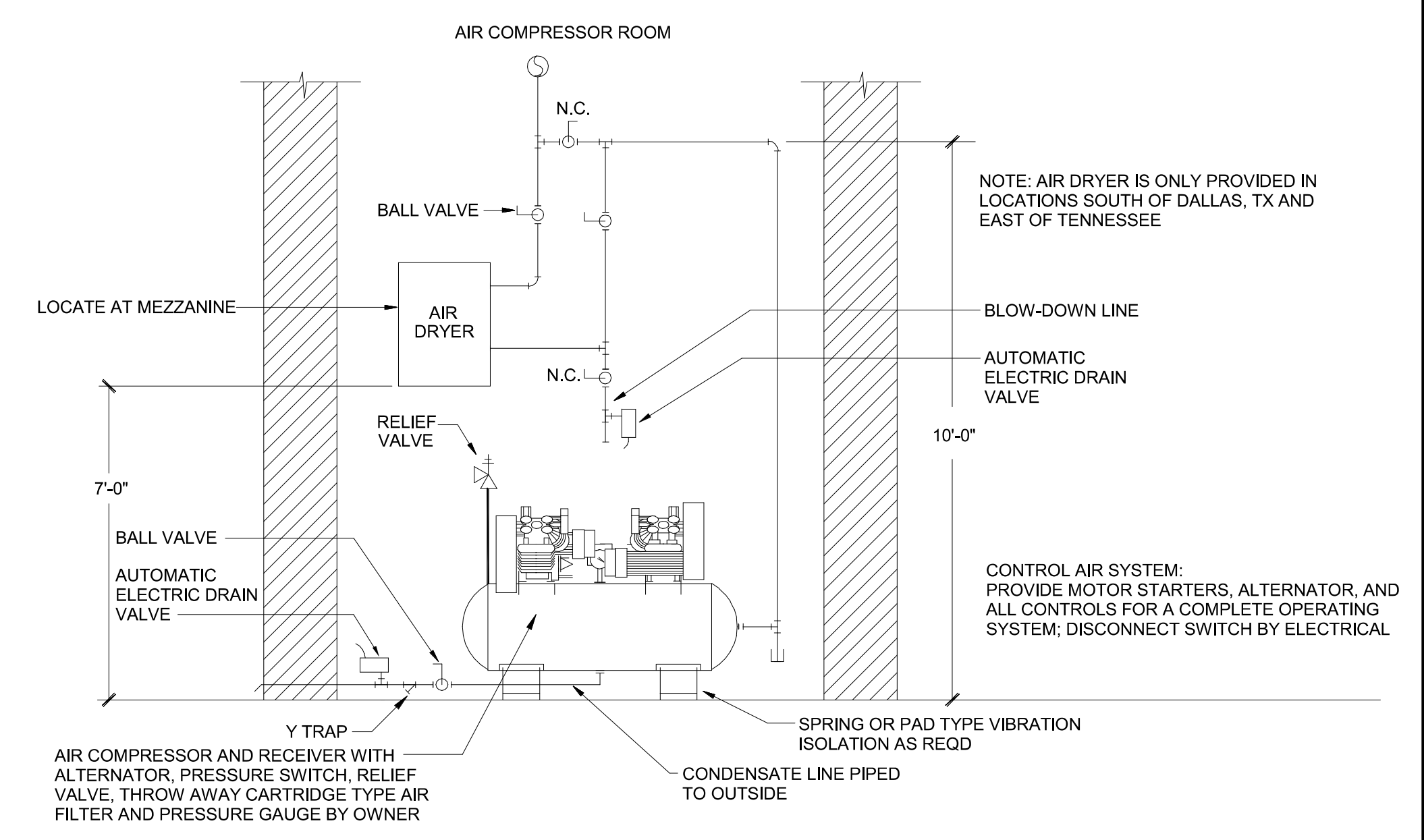
CONTACT INFO:
 WESBROOKS
 MIKE GRAUERHOLZ
 800.772.0863
 MIKEGRAUERHOLZ@SBCGLOBAL.NET



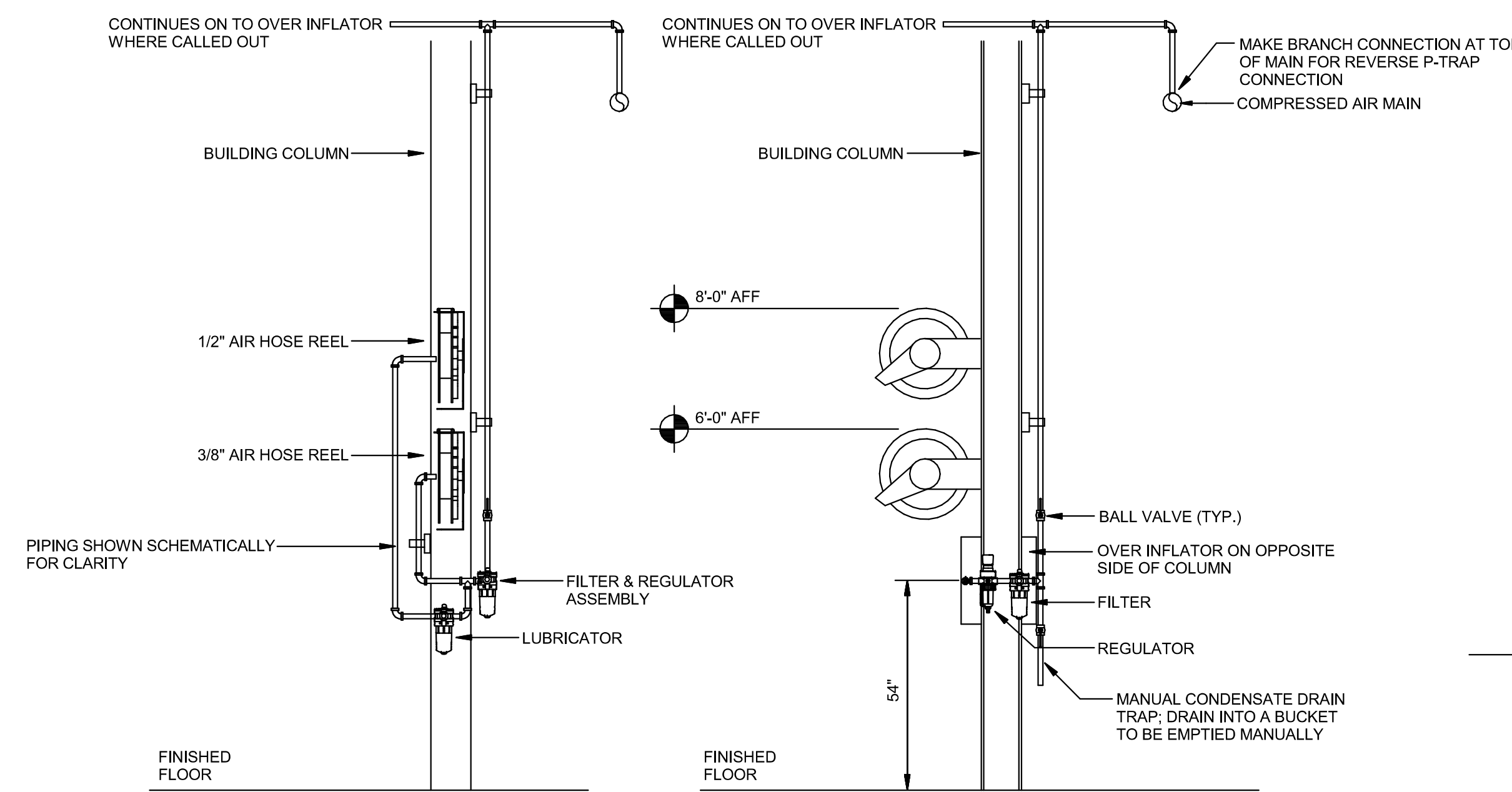
2 ELEVATION AT TIRE BALANCER
 NTS



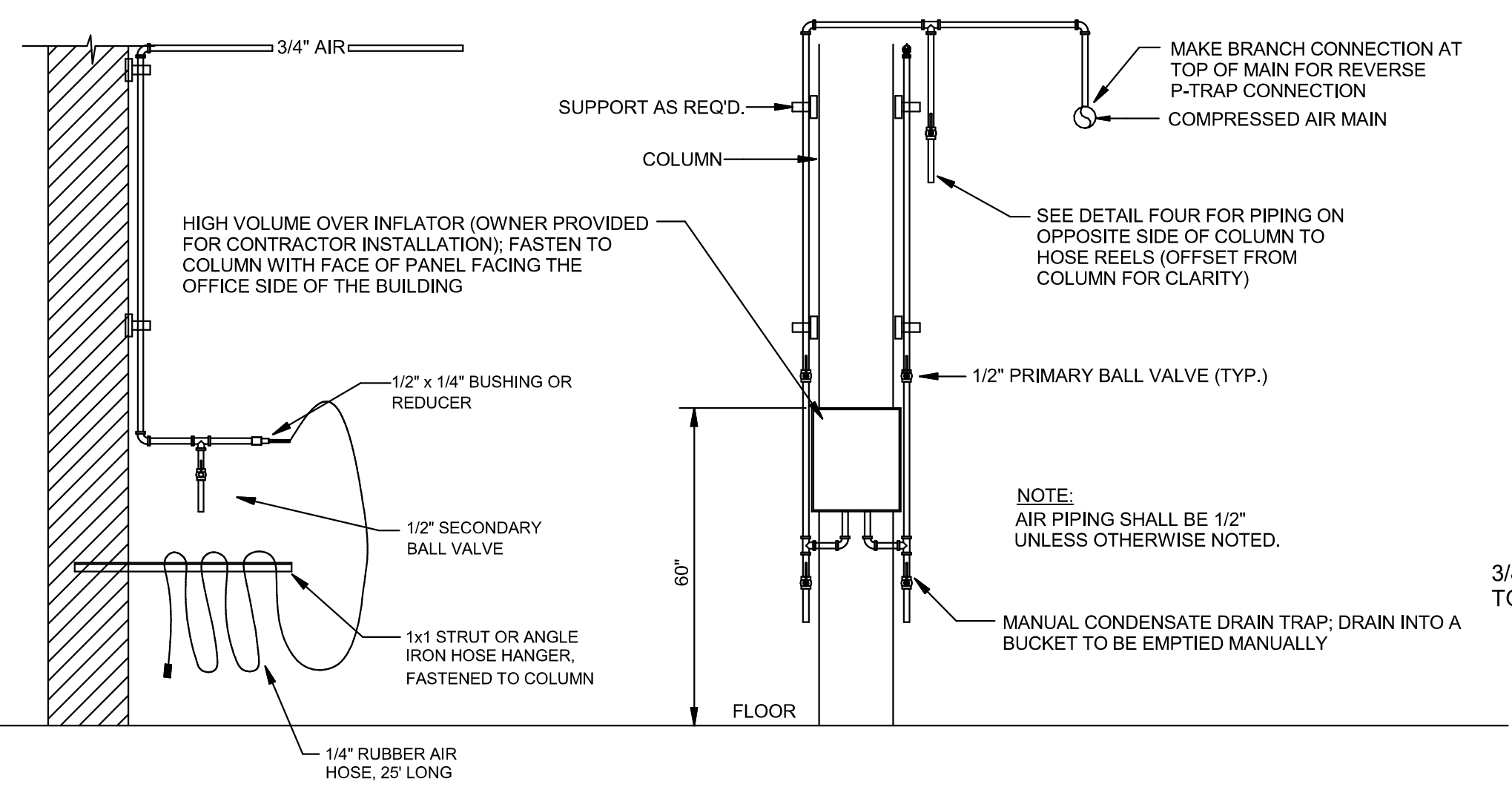
3 ELEVATION AT TIRE SPREADER
 NTS



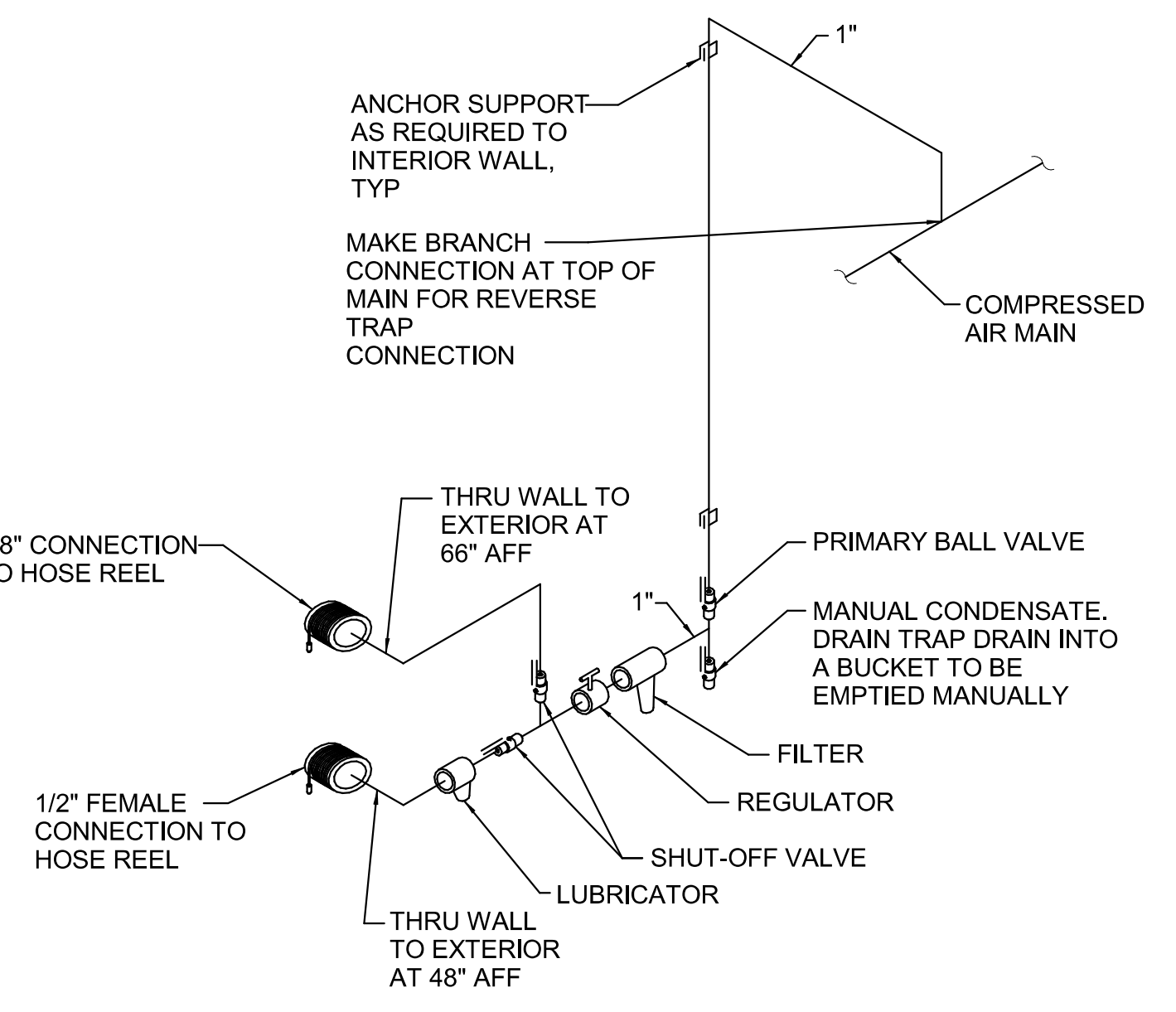
4 ELEVATION AT AIR COMPRESSOR
 NTS



5 ELEVATION AT AIR REELS
 NTS



6 ELEVATION AT REMOTE INFLATION STATION
 NTS



7 EXTERIOR AIR CONNECTION
 NTS

2/23/23 10:31:11 AM
 C:\Users\jkr\OneDrive\Documents\2023 New Projects\Lowell_Nicholson_MS_MEP_SPEEDCO_4B_P1_Plan\Rev\Drawings\PLUMBING DETAILS