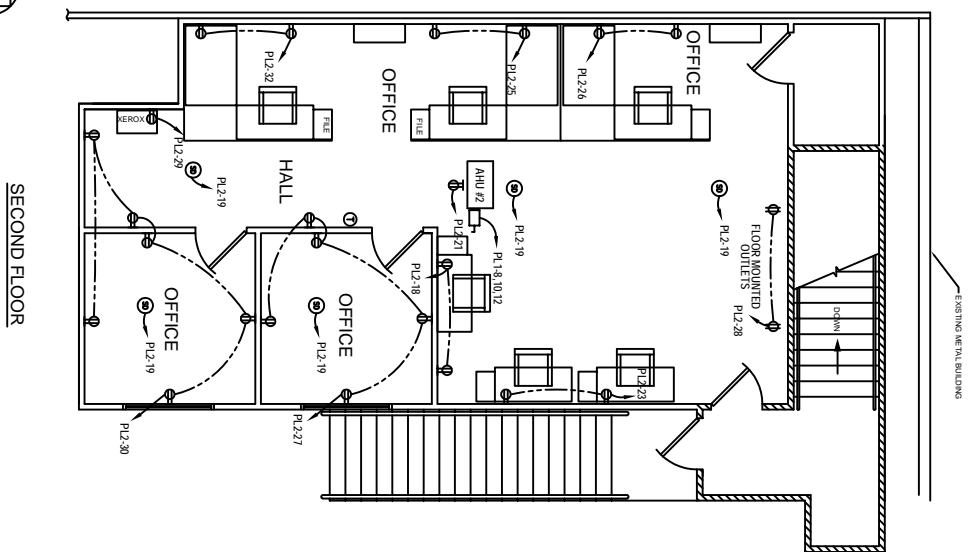
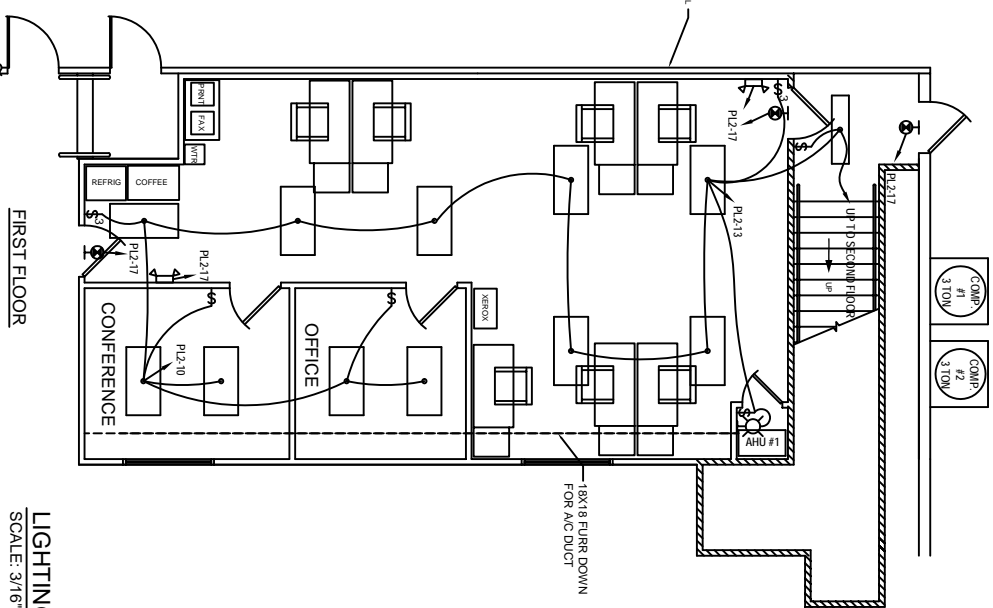


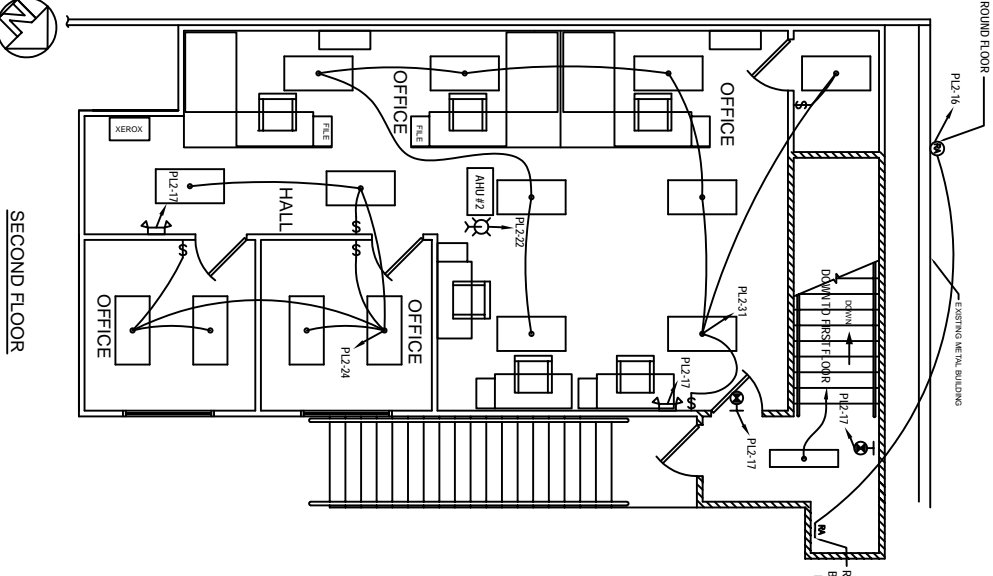
POWER PLAN
SCALE: 3/16"=1'-0"



SECOND FLOOR



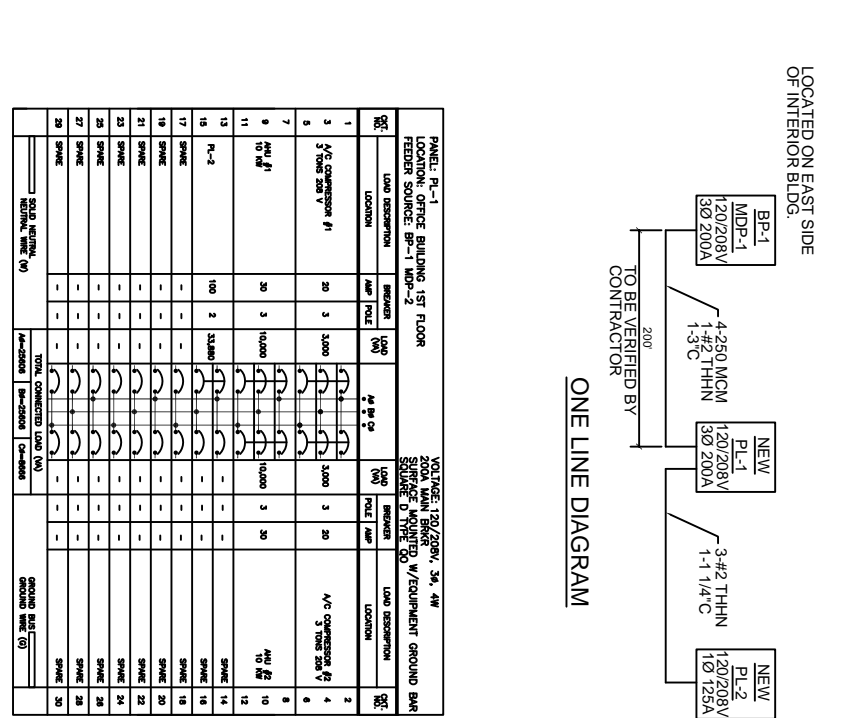
LIGHTING PLAN
SCALE: 3/16"=1'-0"



SECOND FLOOR

ELECTRICAL NOTES

1. ALL WORK SHALL CONFORM TO THE LATEST EDITION OF THE NATIONAL ELECTRICAL CODE, THE GOVERNING ELECTRICAL CODE AND ALL OTHER INSPECTION DEPARTMENTS HAVING JURISDICTION. OBTAIN CERTIFICATES OR APPROVAL WHERE REQUIRED.
2. ALL MATERIALS FURNISHED SHALL BE NEW AND SHALL BE U.L. LISTED.
3. THE DRAWINGS INDICATE SIZE AND GENERAL LOCATION OF WORK. SCALE DIMENSIONS SHALL NOT BE USED. THE EXACT LOCATION AND LOCATION OF ALL LIGHTING FIXTURES, RECEPTACLES AND TELEPHONE OUTLETS, ETC. SHALL BE DETERMINED BY ACTUAL CONDITIONS IN THE FIELD.
4. PRIOR TO BIDDING, CONTRACTOR SHALL VISIT THE JOB SITE AND FAMILIARIZE THEMSELVES WITH THE EXISTING CONDITIONS.
5. ELECTRICAL CONTRACTOR SHALL COORDINATE HIS WORK WITH OTHER TRADES AND WITH OTHER CONTRACTORS WHOSE WORK MAY AFFECT THIS INSTALLATION.
6. ELECTRICAL CONTRACTOR SHALL COORDINATE INCOMING ELECTRICAL SERVICE WITH UTILITY COMPANY AND INCLUDE IN HIS BID ALL CHARGES AND FEES INCURRED IN MODIFICATIONS.
7. WHERE MORE THAN ONE SWITCH OCCURS IN THE SAME LOCATION, THEY SHALL BE INSTALLED IN A GANG TYPE BOX UNDER ONE COVER PLATE.
8. ELECTRICAL CONTRACTOR SHALL COORDINATE THE TELEPHONE INSTALLATION WITH THE TELEPHONE COMPANY AND THE GENERAL CONTRACTOR.
9. ELECTRICAL CONTRACTOR, BEFORE INSTALLING ANY OF THE WORK, SHALL SEE THAT IT DOES NOT INTERFERE WITH CLEARANCES REQUIRED FOR FINISHED COLUMNS, HUNG CEILINGS, PLASTER, PARTITIONS, WALLS, ETC. AS SHOWN IN THE ARCHITECTURAL DRAWINGS AND DETAILS. IF ANY WORK IS INSTALLED AND IT LATER DEVELOPS THAT SUCH DETAILS OR DESIGN CANNOT BE FOLLOWED, THE CONTRACTOR, AT HIS OWN EXPENSE, SHALL MAKE SUCH CHANGES IN THE WORK AS DIRECTED BY THE ARCHITECT. AS WELL AS TO PERMIT THE INSTALLATION OF THE ARCHITECTURAL WORK AS SHOWN ON THE PLANS AND DETAILS. M-2 MC MAY BE USED FOR LIGHTING WHIPS.
10. PERFORMANCE TEST REQUIRED BY THE OWNER OR THE ENGINEER IN CONNECTION WITH THE OPERATION OF THE ELECTRICAL SYSTEM IN THE BUILDING.
11. ALL TESTS SHALL BE MADE IN ACCORDANCE WITH THE LATEST STANDARD OF THE IEEE AND THE NATIONAL ELECTRICAL CODE.
12. MINIMUM CONDUCTOR SIZE SHALL BE #12, 600V INSULATION. MINIMUM SIZE CONDUIT SHALL BE 3/4" EMT FOR INTERIOR USE, AND 1/2" RIGID ALUMINUM FOR EXTERIOR USE. USE TYPE NMC CABLE COPPER, FOR LIGHTS AND RECEPTACLE CIRCUITS. EXTERIOR FITTINGS SHALL BE CAST BOXES AND COVERS; INTERIOR FITTINGS SHALL BE CAST WHERE EXPOSED ON WALLS. STAMPED BOXES MAY BE USED ABOVE CEILINGS IN AIR CONDITIONED SPACES.
13. CONTRACTOR SHALL INSTALL WIRING AND OTHER CIRCUIT COMPONENTS TO MATCH EQUIPMENT ACTUALLY INSTALLED.
14. INSTALL GROUND FAULT RECEPTACLES AT RECEPTACLE LOCATIONS WITHIN 5' OF SINKS OR LAVATORIES, AND AT EXTERIOR LOCATIONS. EXTERIOR RECEPTACLES SHALL ALSO BE WATERPROOF.
15. BONDING AND GROUNDING SHALL BE IN ACCORDANCE WITH NFPA 70:250-23b.
16. GROUND NEUTRAL IN ACCORDANCE WITH NFPA 70:250-23b.
17. FUSES SHALL BE IIT CLASS K5, 250 VOLT, 200,000 AMP INTERRUPTING CAP.
18. PROVIDE SERVICES OF A FIRE/SMOKE DETECTION AND ALARM COMPANY TO DESIGN AND INSTALL ALARM SYSTEM TO MEET REQUIREMENTS OF THE STATE FIRE MARSHALL.
19. EXTERIOR LIGHTING SHALL BE SHADED OR INVARIABLY DIRECTED IN SUCH A MANNER SO THAT NO DIRECT LIGHTING OR GLARE IS CAST BEYOND THE PROPERTY LINE. THE INTENSITY OF SUCH LIGHTING SHALL NOT EXCEED ONE FOOT CANDLE AS MEASURED AT THE ABUTTING PROPERTY LINE.
20. ALL ELECTRICAL, MECHANICAL AND PLUMBING PENETRATING FIRE PARTITIONS SHALL BE FIRE CAULKED. (PENETRATIONS THROUGH RATED CONSTRUCTION SHALL BE SEALED WITH A MATERIAL CAPABLE OF PREVENTING THE PASSAGE OF FLAMES AND HOT GASES WHEN TESTED IN ACCORDANCE WITH ASTM-E814.)



ONE LINE DIAGRAM

PANEL R-1
LOCATION: OFFICE BUILDING 1ST FLOOR
ELECTRICAL SOURCE: BP-1 MDP-1

NO.	LOAD DESCRIPTION	AMPS	VOLTS	PHASE	LOCATION
1	AC COMPRESSOR #1	20	3,200	3	AC COMPRESSOR #1
2	AC COMPRESSOR #2	20	3,200	3	AC COMPRESSOR #2
3	3 TONE 200 V	20	3,200	3	3 TONE 200 V
4	AC COMPRESSOR #3	20	3,200	3	AC COMPRESSOR #3
5	3 TONE 200 V	20	3,200	3	3 TONE 200 V
6	AC COMPRESSOR #4	20	3,200	3	AC COMPRESSOR #4
7	3 TONE 200 V	20	3,200	3	3 TONE 200 V
8	AC COMPRESSOR #5	20	3,200	3	AC COMPRESSOR #5
9	3 TONE 200 V	20	3,200	3	3 TONE 200 V
10	AC COMPRESSOR #6	20	3,200	3	AC COMPRESSOR #6
11	3 TONE 200 V	20	3,200	3	3 TONE 200 V
12	AC COMPRESSOR #7	20	3,200	3	AC COMPRESSOR #7
13	3 TONE 200 V	20	3,200	3	3 TONE 200 V
14	AC COMPRESSOR #8	20	3,200	3	AC COMPRESSOR #8
15	3 TONE 200 V	20	3,200	3	3 TONE 200 V
16	AC COMPRESSOR #9	20	3,200	3	AC COMPRESSOR #9
17	3 TONE 200 V	20	3,200	3	3 TONE 200 V
18	AC COMPRESSOR #10	20	3,200	3	AC COMPRESSOR #10
19	3 TONE 200 V	20	3,200	3	3 TONE 200 V
20	AC COMPRESSOR #11	20	3,200	3	AC COMPRESSOR #11
21	3 TONE 200 V	20	3,200	3	3 TONE 200 V
22	AC COMPRESSOR #12	20	3,200	3	AC COMPRESSOR #12
23	3 TONE 200 V	20	3,200	3	3 TONE 200 V
24	AC COMPRESSOR #13	20	3,200	3	AC COMPRESSOR #13
25	3 TONE 200 V	20	3,200	3	3 TONE 200 V
26	AC COMPRESSOR #14	20	3,200	3	AC COMPRESSOR #14
27	3 TONE 200 V	20	3,200	3	3 TONE 200 V
28	AC COMPRESSOR #15	20	3,200	3	AC COMPRESSOR #15
29	3 TONE 200 V	20	3,200	3	3 TONE 200 V
30	AC COMPRESSOR #16	20	3,200	3	AC COMPRESSOR #16
31	3 TONE 200 V	20	3,200	3	3 TONE 200 V

PANEL R-2
LOCATION: OFFICE BUILDING 2ND FLOOR
ELECTRICAL SOURCE: BP-1 MDP-1

NO.	LOAD DESCRIPTION	AMPS	VOLTS	PHASE	LOCATION
1	RECEPTACLE MULTIRoom ROOM	20	1,200	1	RECEPTACLE SMALL OFFICE
2	RECEPTACLE MULTIRoom ROOM	20	1,200	1	RECEPTACLE SMALL OFFICE
3	RECEPTACLE MULTIRoom ROOM	20	1,200	1	RECEPTACLE SMALL OFFICE
4	RECEPTACLE MULTIRoom ROOM	20	1,200	1	RECEPTACLE SMALL OFFICE
5	RECEPTACLE MULTIRoom ROOM	20	1,200	1	RECEPTACLE SMALL OFFICE
6	RECEPTACLE MULTIRoom ROOM	20	1,200	1	RECEPTACLE SMALL OFFICE
7	RECEPTACLE MULTIRoom ROOM	20	1,200	1	RECEPTACLE SMALL OFFICE
8	RECEPTACLE MULTIRoom ROOM	20	1,200	1	RECEPTACLE SMALL OFFICE
9	RECEPTACLE MULTIRoom ROOM	20	1,200	1	RECEPTACLE SMALL OFFICE
10	RECEPTACLE MULTIRoom ROOM	20	1,200	1	RECEPTACLE SMALL OFFICE
11	RECEPTACLE MULTIRoom ROOM	20	1,200	1	RECEPTACLE SMALL OFFICE
12	RECEPTACLE MULTIRoom ROOM	20	1,200	1	RECEPTACLE SMALL OFFICE
13	RECEPTACLE MULTIRoom ROOM	20	1,200	1	RECEPTACLE SMALL OFFICE
14	RECEPTACLE MULTIRoom ROOM	20	1,200	1	RECEPTACLE SMALL OFFICE
15	RECEPTACLE MULTIRoom ROOM	20	1,200	1	RECEPTACLE SMALL OFFICE
16	RECEPTACLE MULTIRoom ROOM	20	1,200	1	RECEPTACLE SMALL OFFICE
17	RECEPTACLE MULTIRoom ROOM	20	1,200	1	RECEPTACLE SMALL OFFICE
18	RECEPTACLE MULTIRoom ROOM	20	1,200	1	RECEPTACLE SMALL OFFICE
19	RECEPTACLE MULTIRoom ROOM	20	1,200	1	RECEPTACLE SMALL OFFICE
20	RECEPTACLE MULTIRoom ROOM	20	1,200	1	RECEPTACLE SMALL OFFICE
21	RECEPTACLE MULTIRoom ROOM	20	1,200	1	RECEPTACLE SMALL OFFICE
22	RECEPTACLE MULTIRoom ROOM	20	1,200	1	RECEPTACLE SMALL OFFICE
23	RECEPTACLE MULTIRoom ROOM	20	1,200	1	RECEPTACLE SMALL OFFICE
24	RECEPTACLE MULTIRoom ROOM	20	1,200	1	RECEPTACLE SMALL OFFICE
25	RECEPTACLE MULTIRoom ROOM	20	1,200	1	RECEPTACLE SMALL OFFICE
26	RECEPTACLE MULTIRoom ROOM	20	1,200	1	RECEPTACLE SMALL OFFICE
27	RECEPTACLE MULTIRoom ROOM	20	1,200	1	RECEPTACLE SMALL OFFICE
28	RECEPTACLE MULTIRoom ROOM	20	1,200	1	RECEPTACLE SMALL OFFICE
29	RECEPTACLE MULTIRoom ROOM	20	1,200	1	RECEPTACLE SMALL OFFICE
30	RECEPTACLE MULTIRoom ROOM	20	1,200	1	RECEPTACLE SMALL OFFICE
31	RECEPTACLE MULTIRoom ROOM	20	1,200	1	RECEPTACLE SMALL OFFICE

LOCATED ON EAST SIDE OF INTERIOR BLDG.

LEGEND

- 2x4' RECESSED FLUORESCENT LAMP, STEEL HOUSING
- 1x4' RECESSED FLUORESCENT LAMP, STEEL HOUSING
- ⊕ EMERGENCY LIGHT WITH 90 MIN. BATTERY BACKUP
- ⊕ INCANDESCENT WALL MOUNT FIXTURE
- ⊕ 120V, 20A DUPLEX RECEPTACLE
- ⊕ 120V, 20A DUPLEX RECEPTACLE FLOOR MTD DISCONNECT
- ⊕ POWER PANEL
- ⊕ SWITCH
- ⊕ 3-WAY SWITCH
- ⊕ SMOKE SELECTOR-U.L. #285 WIRED TO 110V CIRCUIT
- ⊕ EXIT LIGHT, BATTERY BACK-UP
- ⊕ THERMOSTAT
- ⊕ LIGHT (PULL CHAIN)

PANEL R-1
LOCATION: OFFICE BUILDING 1ST FLOOR
ELECTRICAL SOURCE: BP-1 MDP-1

PANEL R-2
LOCATION: OFFICE BUILDING 2ND FLOOR
ELECTRICAL SOURCE: BP-1 MDP-1

LOCATED ON EAST SIDE OF INTERIOR BLDG.

LEGEND

PANEL R-1
LOCATION: OFFICE BUILDING 1ST FLOOR
ELECTRICAL SOURCE: BP-1 MDP-1

PANEL R-2
LOCATION: OFFICE BUILDING 2ND FLOOR
ELECTRICAL SOURCE: BP-1 MDP-1

LOCATED ON EAST SIDE OF INTERIOR BLDG.

LEGEND

PANEL R-1
LOCATION: OFFICE BUILDING 1ST FLOOR
ELECTRICAL SOURCE: BP-1 MDP-1

PANEL R-2
LOCATION: OFFICE BUILDING 2ND FLOOR
ELECTRICAL SOURCE: BP-1 MDP-1

LOCATED ON EAST SIDE OF INTERIOR BLDG.

LEGEND

PANEL R-1
LOCATION: OFFICE BUILDING 1ST FLOOR
ELECTRICAL SOURCE: BP-1 MDP-1

PANEL R-2
LOCATION: OFFICE BUILDING 2ND FLOOR
ELECTRICAL SOURCE: BP-1 MDP-1

LOCATED ON EAST SIDE OF INTERIOR BLDG.

LEGEND

PANEL R-1
LOCATION: OFFICE BUILDING 1ST FLOOR
ELECTRICAL SOURCE: BP-1 MDP-1

PANEL R-2
LOCATION: OFFICE BUILDING 2ND FLOOR
ELECTRICAL SOURCE: BP-1 MDP-1

LOCATED ON EAST SIDE OF INTERIOR BLDG.

LEGEND

PANEL R-1
LOCATION: OFFICE BUILDING 1ST FLOOR
ELECTRICAL SOURCE: BP-1 MDP-1

PANEL R-2
LOCATION: OFFICE BUILDING 2ND FLOOR
ELECTRICAL SOURCE: BP-1 MDP-1

LOCATED ON EAST SIDE OF INTERIOR BLDG.

LEGEND

PANEL R-1
LOCATION: OFFICE BUILDING 1ST FLOOR
ELECTRICAL SOURCE: BP-1 MDP-1

PANEL R-2
LOCATION: OFFICE BUILDING 2ND FLOOR
ELECTRICAL SOURCE: BP-1 MDP-1

LOCATED ON EAST SIDE OF INTERIOR BLDG.

LEGEND

PANEL R-1
LOCATION: OFFICE BUILDING 1ST FLOOR
ELECTRICAL SOURCE: BP-1 MDP-1

PANEL R-2
LOCATION: OFFICE BUILDING 2ND FLOOR
ELECTRICAL SOURCE: BP-1 MDP-1

LOCATED ON EAST SIDE OF INTERIOR BLDG.

LEGEND

PANEL R-1
LOCATION: OFFICE BUILDING 1ST FLOOR
ELECTRICAL SOURCE: BP-1 MDP-1

PANEL R-2
LOCATION: OFFICE BUILDING 2ND FLOOR
ELECTRICAL SOURCE: BP-1 MDP-1

LOCATED ON EAST SIDE OF INTERIOR BLDG.

LEGEND

PANEL R-1
LOCATION: OFFICE BUILDING 1ST FLOOR
ELECTRICAL SOURCE: BP-1 MDP-1

PANEL R-2
LOCATION: OFFICE BUILDING 2ND FLOOR
ELECTRICAL SOURCE: BP-1 MDP-1

LOCATED ON EAST SIDE OF INTERIOR BLDG.

LEGEND

PANEL R-1
LOCATION: OFFICE BUILDING 1ST FLOOR
ELECTRICAL SOURCE: BP-1 MDP-1

PANEL R-2
LOCATION: OFFICE BUILDING 2ND FLOOR
ELECTRICAL SOURCE: BP-1 MDP-1

LOCATED ON EAST SIDE OF INTERIOR BLDG.

LEGEND

PANEL R-1
LOCATION: OFFICE BUILDING 1ST FLOOR
ELECTRICAL SOURCE: BP-1 MDP-1

PANEL R-2
LOCATION: OFFICE BUILDING 2ND FLOOR
ELECTRICAL SOURCE: BP-1 MDP-1

LOCATED ON EAST SIDE OF INTERIOR BLDG.

LEGEND

PANEL R-1
LOCATION: OFFICE BUILDING 1ST FLOOR
ELECTRICAL SOURCE: BP-1 MDP-1

PANEL R-2
LOCATION: OFFICE BUILDING 2ND FLOOR
ELECTRICAL SOURCE: BP-1 MDP-1

LOCATED ON EAST SIDE OF INTERIOR BLDG.

LEGEND

PANEL R-1
LOCATION: OFFICE BUILDING 1ST FLOOR
ELECTRICAL SOURCE: BP-1 MDP-1

PANEL R-2
LOCATION: OFFICE BUILDING 2ND FLOOR
ELECTRICAL SOURCE: BP-1 MDP-1

LOCATED ON EAST SIDE OF INTERIOR BLDG.

LEGEND

PANEL R-1
LOCATION: OFFICE BUILDING 1ST FLOOR
ELECTRICAL SOURCE: BP-1 MDP-1

PANEL R-2
LOCATION: OFFICE BUILDING 2ND FLOOR
ELECTRICAL SOURCE: BP-1 MDP-1

LOCATED ON EAST SIDE OF INTERIOR BLDG.

LEGEND

PANEL R-1
LOCATION: OFFICE BUILDING 1ST FLOOR
ELECTRICAL SOURCE: BP-1 MDP-1

PANEL R-2
LOCATION: OFFICE BUILDING 2ND FLOOR
ELECTRICAL SOURCE: BP-1 MDP-1

LOCATED ON EAST SIDE OF INTERIOR BLDG.

LEGEND

PANEL R-1
LOCATION: OFFICE BUILDING 1ST FLOOR
ELECTRICAL SOURCE: BP-1 MDP-1

PANEL R-2
LOCATION: OFFICE BUILDING 2ND FLOOR
ELECTRICAL SOURCE: BP-1 MDP-1

LOCATED ON EAST SIDE OF INTERIOR BLDG.

LEGEND

PANEL R-1
LOCATION: OFFICE BUILDING 1ST FLOOR
ELECTRICAL SOURCE: BP-1 MDP-1

PANEL R-2
LOCATION: OFFICE BUILDING 2ND FLOOR
ELECTRICAL SOURCE: BP-1 MDP-1

LOCATED ON EAST SIDE OF INTERIOR BLDG.

LEGEND

PANEL R-1
LOCATION: OFFICE BUILDING 1ST FLOOR
ELECTRICAL SOURCE: BP-1 MDP-1

PANEL R-2
LOCATION: OFFICE BUILDING 2ND FLOOR
ELECTRICAL SOURCE: BP-1 MDP-1

LOCATED ON EAST SIDE OF INTERIOR BLDG.

LEGEND

PANEL R-1
LOCATION: OFFICE BUILDING 1ST FLOOR
ELECTRICAL SOURCE: BP-1 MDP-1

PANEL R-2
LOCATION: OFFICE BUILDING 2ND FLOOR
ELECTRICAL SOURCE: BP-1 MDP-1

LOCATED ON EAST SIDE OF INTERIOR BLDG.

LEGEND

PANEL R-1
LOCATION: OFFICE BUILDING 1ST FLOOR
ELECTRICAL SOURCE: BP-1 MDP-1

PANEL R-2
LOCATION: OFFICE BUILDING 2ND FLOOR
ELECTRICAL SOURCE: BP-1 MDP-1

LOCATED ON EAST SIDE OF INTERIOR BLDG.

LEGEND

PANEL R-1
LOCATION: OFFICE BUILDING 1ST FLOOR
ELECTRICAL SOURCE: BP-1 MDP-1

PANEL R-2
LOCATION: OFFICE BUILDING 2ND FLOOR
ELECTRICAL SOURCE: BP-1 MDP-1

LOCATED ON EAST SIDE OF INTERIOR BLDG.

LEGEND

PANEL R-1
LOCATION: OFFICE BUILDING 1ST FLOOR
ELECTRICAL SOURCE: BP-1 MDP-1

PANEL R-2
LOCATION: OFFICE BUILDING 2ND FLOOR
ELECTRICAL SOURCE: BP-1 MDP-1

LOCATED ON EAST SIDE OF INTERIOR BLDG.

LEGEND

PANEL R-1
LOCATION: OFFICE BUILDING 1ST FLOOR
ELECTRICAL SOURCE: BP-1 MDP-1

PANEL R-2
LOCATION: OFFICE BUILDING 2ND FLOOR
ELECTRICAL SOURCE: BP-1 MDP-1

LOCATED ON EAST SIDE OF INTERIOR BLDG.

LEGEND

PANEL R-1
LOCATION: OFFICE BUILDING 1ST FLOOR
ELECTRICAL SOURCE: BP-1 MDP-1

PANEL R-2
LOCATION: OFFICE BUILDING 2ND FLOOR
ELECTRICAL SOURCE: BP-1 MDP-1

LOCATED ON EAST SIDE OF INTERIOR BLDG.

LEGEND

PANEL R-1
LOCATION: OFFICE BUILDING 1ST FLOOR
ELECTRICAL SOURCE: BP-1 MDP-1

PANEL R-2
LOCATION: OFFICE BUILDING 2ND FLOOR
ELECTRICAL SOURCE: BP-1 MDP-1

LOCATED ON EAST SIDE OF INTERIOR BLDG.

LEGEND

PANEL R-1
LOCATION: OFFICE BUILDING 1ST FLOOR
ELECTRICAL SOURCE: BP-1 MDP-1

PANEL R-2
LOCATION: OFFICE BUILDING 2ND FLOOR
ELECTRICAL SOURCE: BP-1 MDP-1

LOCATED ON EAST SIDE OF INTERIOR BLDG.

LEGEND

PANEL R-1
LOCATION: OFFICE BUILDING 1ST FLOOR
ELECTRICAL SOURCE: BP-1 MDP-1

PANEL R-2
LOCATION: OFFICE BUILDING 2ND FLOOR
ELECTRICAL SOURCE: BP-1 MDP-1

LOCATED ON EAST SIDE OF INTERIOR BLDG.

LEGEND

PANEL R-1
LOCATION: OFFICE BUILDING 1ST FLOOR
ELECTRICAL SOURCE: BP-1 MDP-1

PANEL R-2
LOCATION: OFFICE BUILDING