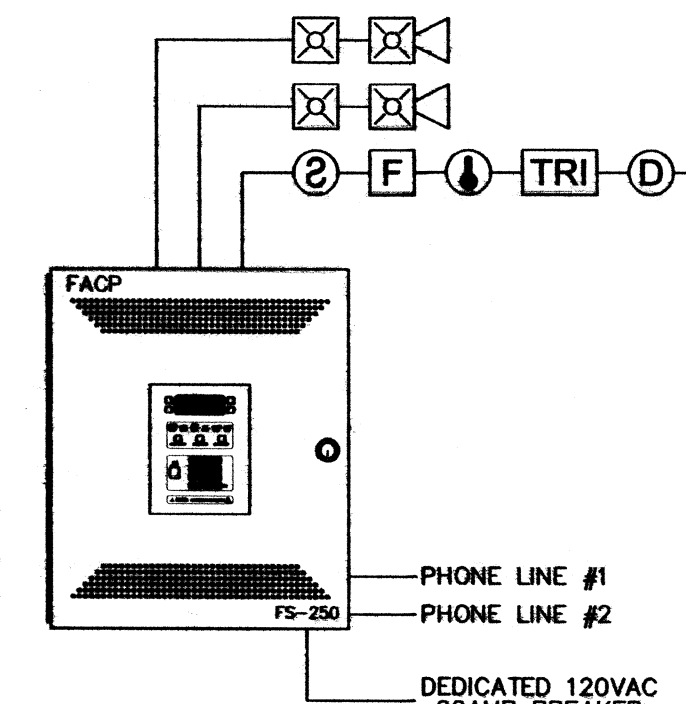


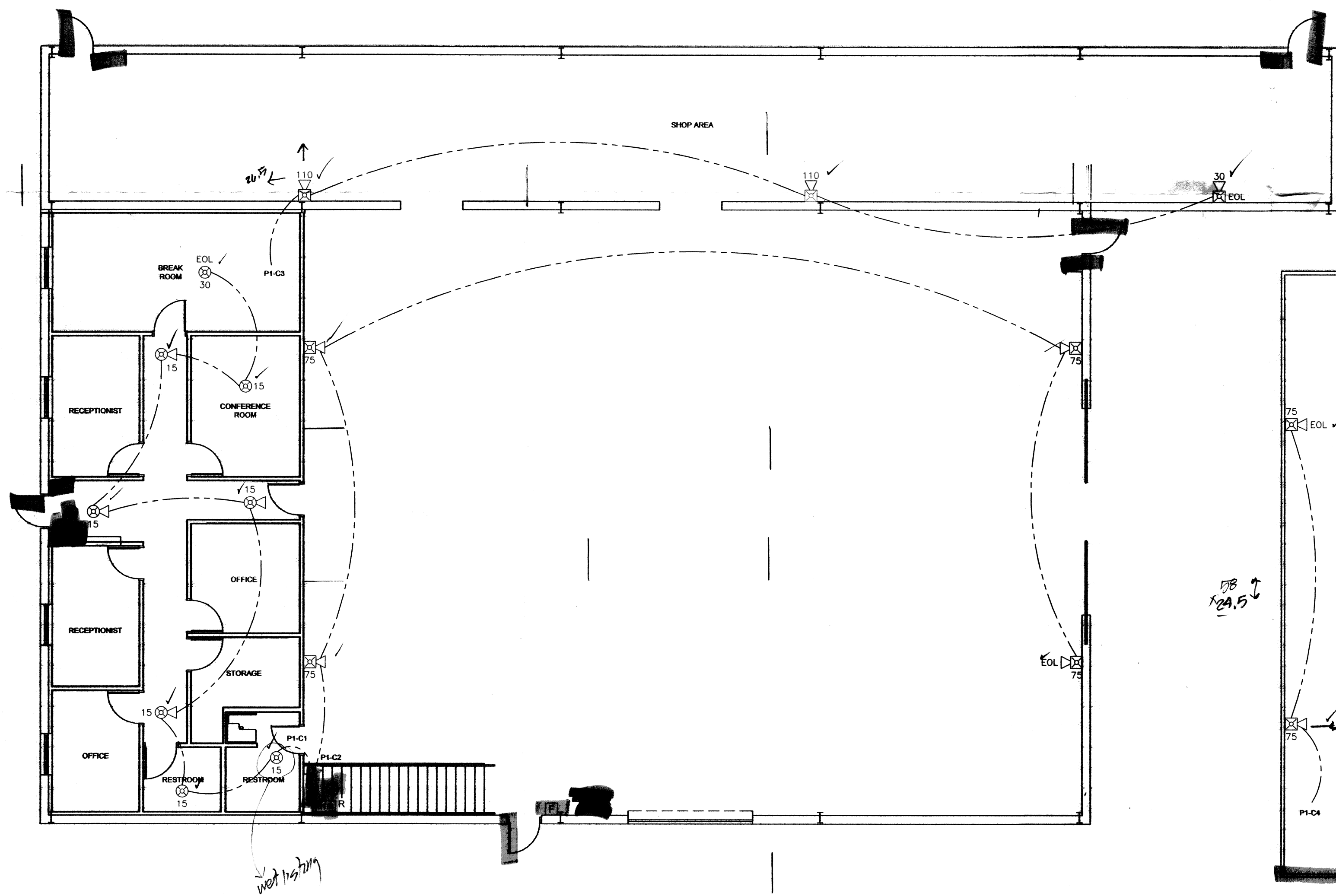
DAMMON ENGINEERING INC  
 Date: 6-9-15 Project: TEXTRON  
 Reviewed: \_\_\_\_\_  
 Reviewed as Noted: \_\_\_\_\_  
 Rejected: \_\_\_\_\_  
 Other: \_\_\_\_\_

Corrections or comments made on the shop drawings during this review do not relieve the contractor from compliance with requirements of the drawings and specifications. This check is only for review of the general conformance with the design concept of the project and general compliance with the information given in the contract documents. This contractor is responsible for confirming and correcting all quantities and dimensions, verifying fabrication processes and techniques of construction, coordinating his or her work with that of all other trades and performing all in a safe and satisfactory manner.

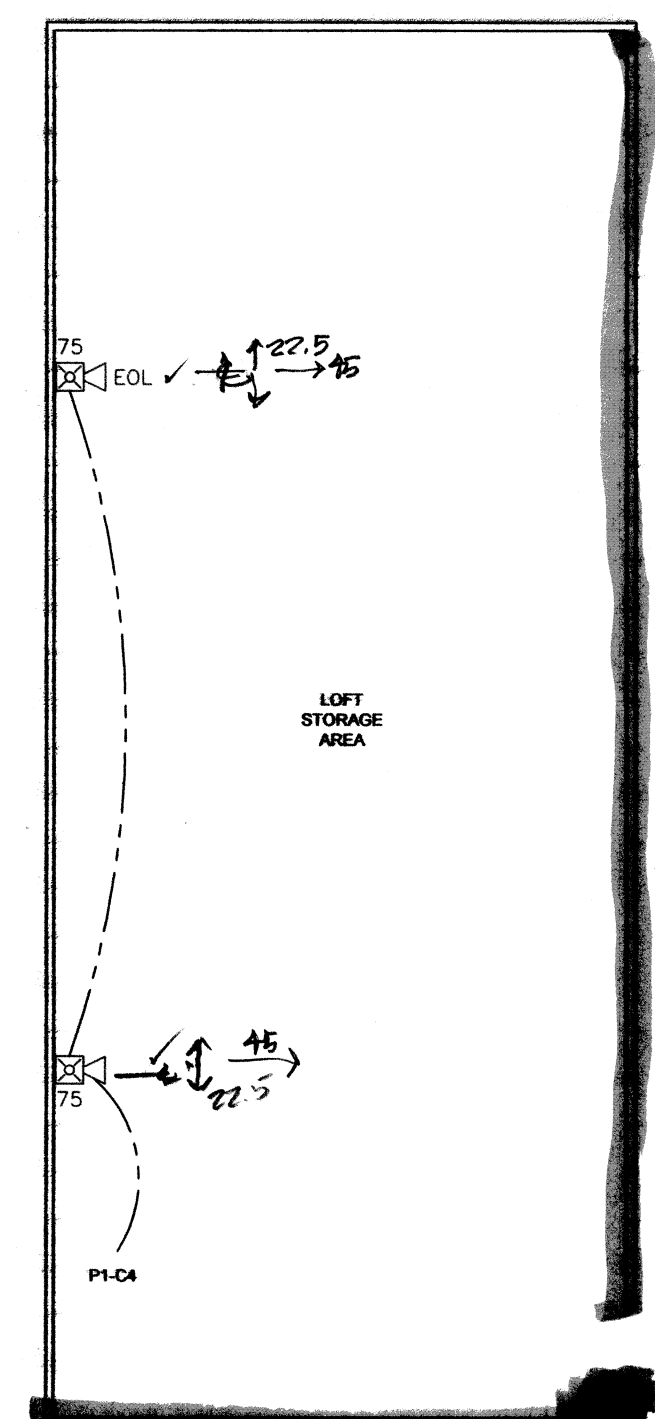
Submittal Item: FIRE ALARM  
 Comments: \_\_\_\_\_



TYPICAL FIRE ALARM RISER



FLOORPLAN  
 1/8" = 1'-0"



REVIEWED FOR STATE FIRE MARSHAL AS PER REVIEW LETTER BY: ELLEN McFARLAND, A.R.C.  
 Ellen McFarland

MEZZ  
 1/8" = 1'-0"

DAMMON ENGINEERING INC  
 Date: \_\_\_\_\_ Project: \_\_\_\_\_  
 Reviewed: \_\_\_\_\_  
 Reviewed as Noted: \_\_\_\_\_  
 Rejected: \_\_\_\_\_  
 Other: \_\_\_\_\_

Submittal Item: \_\_\_\_\_  
 Comments: \_\_\_\_\_

SYM	DESCRIPTION	MODEL	BACK BOX	MTG. HEIGHT
FACP	FIRE ALARM CONTROL PANEL	FC922	(SUPPLIED BY PRIORITY SYSTEMS)	66" TO TOP
FVAP	FIRE ALARM VOICE PANEL	SP 40/2	(SUPPLIED BY PRIORITY SYSTEMS)	66" TO TOP
SEV	SIGNAL EXTENDER	FM-3	(SUPPLIED BY PRIORITY SYSTEMS)	66" TO TOP
ST	STROBE	ST-15-LS	4" SQUARE	66" TO TOP
SM	SMOKE DETECTOR	FM-5	SOL. GANG 3 1/2" DEEP	48" AFF. TO CENTER
SD	DUCT DETECTOR W/RELAY	OP221	4" OCTAGON	CEILING MOUNT
HT	HEAT DETECTOR	FD2402-HR	DUCT MOUNTED	DUCT MOUNTED
HR	HEAT RELAY	HR21	4" SQUARE	CEILING MOUNT
AM	ADDRESSABLE RELAY MODULE	HR-M	4" SQUARE 2-1/8" DEEP	FIELD LOCATE
AS	ADDRESSABLE SINGLE MODULE	HR-M	4" SQUARE 2-1/8" DEEP	FIELD LOCATE
SM	WALL MOUNTED SELECTABLE CANDELA STROBE (WHITE)	ZR-MC-W	4" SQUARE 2-1/8" DEEP	82" AFF. TO CENTER
CS	CEILING MOUNTED SELECTABLE CANDELA STROBE (WHITE)	ST-MC-CW	4" SQUARE 2-1/8" DEEP	CEILING MOUNT
MS	WALL MOUNTED SELECTABLE CANDELA HORN-STROBE (WHITE)	ZR-MC-W	4" SQUARE 2-1/8" DEEP	82" AFF. TO CENTER
CS	CEILING MOUNTED SELECTABLE CANDELA HORN-STROBE (WHITE)	MS-MC-CW	4" SQUARE 2-1/8" DEEP	CEILING MOUNT
SM	WALL MOUNTED SELECTABLE CANDELA SPEAKER STROBE (WHITE)	SE-MC-W	4" SQUARE 2-1/8" DEEP	82" AFF. TO CENTER
CS	CEILING MOUNTED SELECTABLE CANDELA SPEAKER STROBE (WHITE)	SE-MC-CW	4" SQUARE 2-1/8" DEEP	CEILING MOUNT
SP	WALL MOUNTED SPEAKER (WHITE)	SE-W	4" SQUARE 2-1/8" DEEP	82" AFF. TO CENTER
CS	CEILING MOUNTED SPEAKER (WHITE)	SE-CW	4" SQUARE 2-1/8" DEEP	CEILING MOUNT
F.B.O.	FIRE BELL OPERATOR	F.B.O.	N/A	N/A
F.A.C.	FIRE ALARM CONTROL	F.A.C.	N/A	N/A
MR-201/C	CONTROL RELAY	MR-201/C	SELF-CONTAINED	FIELD LOCATE
DRH	DOOR HOLDER	DRH4120FFC	4" SQUARE 2-1/8" DEEP	FIELD LOCATE

NOTE: ALL SYMBOLS MAY NOT APPLY TO THESE DRAWINGS; ALL VISUAL DEVICES TO BE 15/75 UNLESS NOTED ON DRAWINGS.  
 NOTE: "E" DENOTES EXISTING DEVICE

WIRE LEGEND	
---	F/A DETECTION CKT - 1 PAIR #18 FPLR/FPLP
---	F/A STROBE/HORN STROBE CKT - 1 PAIR #14 FPLR/FPLP
---	F/A SPEAKER CKT - 1 PAIR # 16 SHLD FPLR/FPLP

- FIRE ALARM SYSTEM GENERAL NOTES**
- ALL SMOKE DETECTOR LOCATIONS ARE GENERAL. THE FOLLOWING RULES MUST BE OBSERVED FOR SMOKE DETECTOR PLACEMENT.
    - A- SMOKE DETECTORS SHALL NOT BE INSTALLED CLOSER THAN 3' FROM AN AIR CONDITIONING VENT.
    - B- IN ROOMS SMALLER THAN 30'x30' THE DETECTOR SHALL BE CENTERED IN THE ROOM IF POSSIBLE BY OBSERVING THE ABOVE RULE.
    - C- IN ROOMS WHERE MULTIPLE DETECTORS ARE SHOWN, DETECTORS SHALL BE INSTALLED NO FURTHER THAN 30' FROM EACH OTHER NOR ANY FURTHER THAN 15' FROM A SIDE WALL WITHOUT APPROVAL FROM PRIORITY SYSTEMS.
  - DETECTOR AND AUDIBLE CIRCUIT POLARITY SHALL BE OBSERVED.
  - AUDIBLE/VISUAL CIRCUIT WIRING IS SUPERVISED. NO PARALLEL BRANCHING IS PERMISSIBLE.
  - CONDUIT RUNS SHOWN DIAGRAMMATICALLY. EXACT LOCATION IS TO BE DETERMINED IN THE FIELD.
  - INSTALLATION SHALL BE IN STRICT CONFORMANCE WITH THE NATIONAL ELECTRIC CODE, LOCAL CODE(S), AND/OR AUTHORITY HAVING JURISDICTION.
  - INSTALLATION MATERIALS (I.E. CONDUIT, WIRE, FITTINGS, HANGERS, AND STANDARD BOXES) ARE NOT SUPPLIED BY PRIORITY SYSTEMS.
  - WIRING SHALL BE PER PLAN WITH RESPECT TO CONDUCTOR SIZE, TYPE, QUANTITY AND COLOR CODE. CONDUCTORS SHALL BE PERMANENTLY MARKED FOR FUTURE IDENTIFICATION.
  - INSTALLING CONTRACTOR SHALL RETURN ONE SET OF ACCURATELY MARKED DRAWINGS FOR "AS BUILT" PURPOSES.
  - FOR ADDITIONAL INSTALLATION INSTRUCTIONS, REFER TO CATALOG CUT SHEETS AND/OR INSTALLATION INSTRUCTIONS.
  - 120vac POWER SHALL NOT BE APPLIED TO FIRE ALARM PANEL WITHOUT DIRECT SUPERVISION OF TECHNICIAN.
  - INSTALL A DUCT SMOKE DETECTOR IN ALL AHU'S WITH A CFM OF 2000 OR GREATER. ALL AHU'S WITH A CFM OF 2000 OR GREATER TO BE SHUTDOWN BY FIRE ALARM CONTROL PANEL.
  - VERIFY MOUNTING LOCATIONS FOR ALL FACP'S, EVAC'S, PAD'S AND ANN'S WITH ELECTRICAL CONTRACTOR.
  - UNLESS OTHERWISE NOTED ALL SPEAKERS SHOULD BE TAPPED AT 1/4 WATT.

PRIORITY SYSTEMS INC.  
 SPECIAL SYSTEMS CONTRACTOR  
 5221 WEST NAPOLEON AVE.  
 OFFICE: (504)857-8864  
 FAX: (504)888-6542  
 METAIRE, LOUISIANA 70001  
 www.PrioritySystemsInc.net  
 info@PrioritySystemsInc.net



TEXTRON - STONE ROAD ADDITIONS  
 262 STONE ROAD  
 SLIDELL, LA 70460

NOTES: 470018

SHEET TITLE: FIRE ALARM SYSTEM

REV. NO.	DATE	FOR APPROVAL	REMARKS
0	5/15		

DESIGNED BY: M. LEJEUNE, JR.  
 DRAWN BY: T. NEAL  
 APPROVED BY: M. LEJEUNE, JR.  
 DATE: JUNE 2015  
 SCALE: 1/8" = 1'-0"  
 PROJECT NO: 881-11  
 DRAWING NO: FA-1.0