

DAMMON ENGINEERING, INC.

CHIEF ENGINEER
EMMETT DAMMON, P.E.
CHIEF ARCHITECT
ROBERT WILTSE

554 OLD SPANISH TRAIL
SLIDELL, LA, 70458
OFFICE: 985-649-5832
FAX: 985-641-5950

WEBSITE:
WWW.DAMMONENGINEERING.COM
EMAIL:
DAMMONENG@BELL.SOUTH.NET

ARCHITECTURE
ENGINEERING
STUDIES
PLANNING
INVESTIGATION
EXPERT WITNESS

NAVSEA SSC
OFFICE AREA

TEXTRON MARINE
LAND SYSTEMS
19401 CHEF MENTURER HWY
NEW ORLEANS, LA

REFLECTED
CEILING
PLAN

REV:

SCALE: AS NOTED

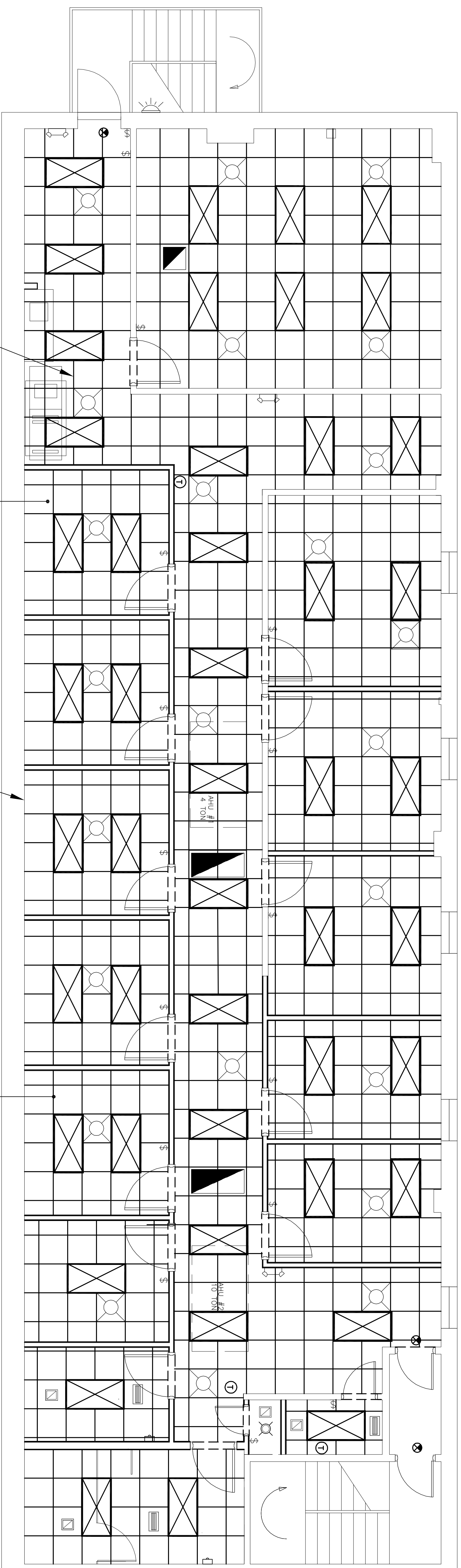
JOB#: 2120

DATE: 9/19/2011

SHEET 5

A-3

OF 8

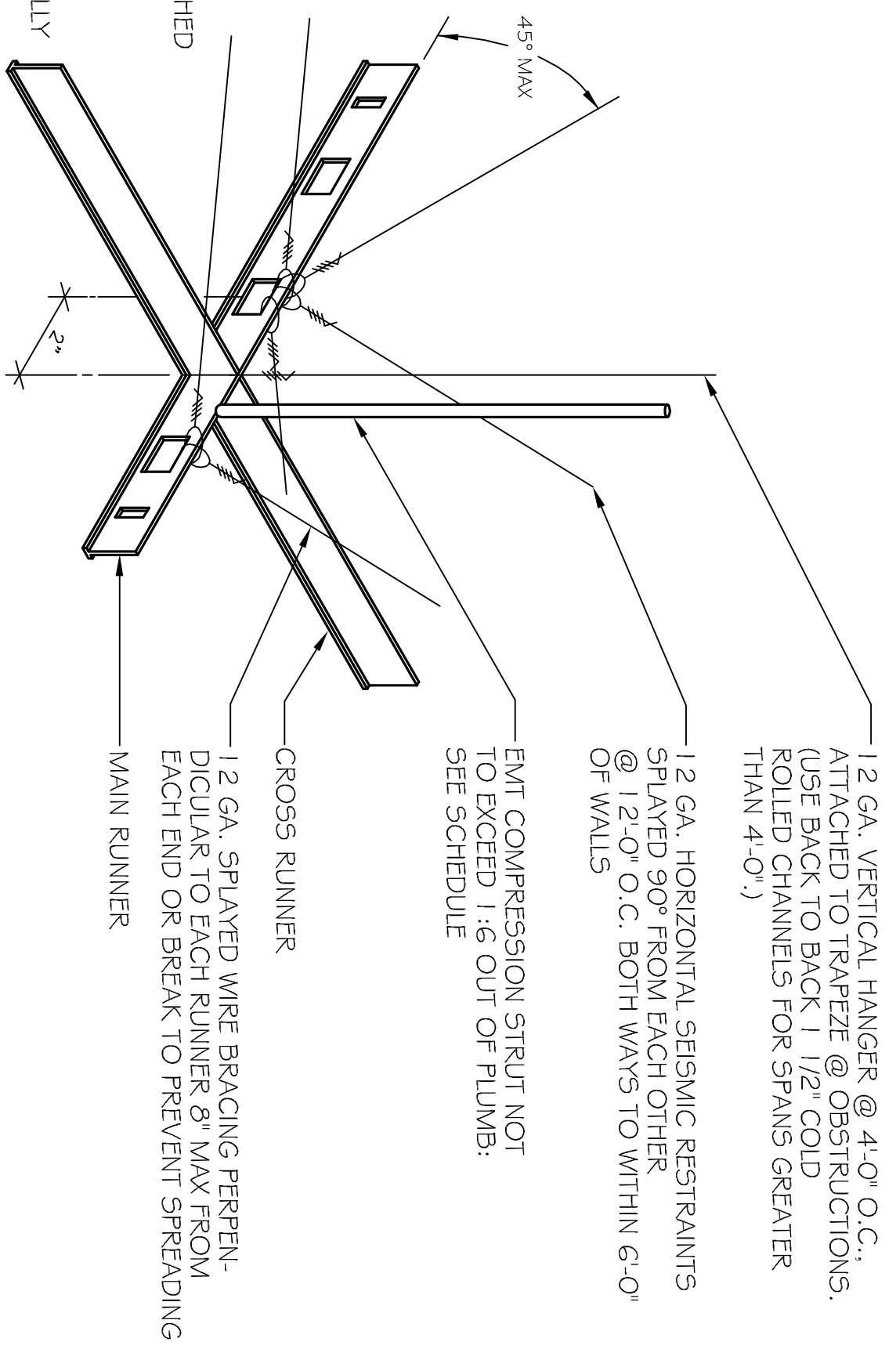


REFLECTED CEILING PLAN
SCALE: 1/4" = 1'-0"

GENERAL NOTES

1. INSULATION AND INSULATION ASSEMBLIES SHALL MEET THE REQUIREMENTS OF THE INTERNATIONAL BUILDING CODE 2009, SECTION 719.
 - A. CONCEALED INSULATION SHALL HAVE A FLAME SPREAD OF 0-25 AND SMOKE DEVELOPED INDEX OF 0-450.
 - B. FACING SHALL COMPLY WITH IBC 2009.
2. ALL BATT INSULATION SHALL HAVE A CLASS "A" (0-25) FLAME SPREAD IN COMPLIANCE WITH APPLICABLE CODE.
3. PROVIDE CLEANUP ON A REGULAR BASIS. NO TRASH STORED IN BUILDING.

COMPRESSION STRUT SCHEDULE	DIAMETER	LENGTH UP TO 4'-0"
5-0"	1"Ø	3/4"Ø
8-0"	1-1/2"Ø	



- NOTES:
1. ALL HANGERS & SUPPORTS TO BE ATTACHED WITH 4 TURNS IN 1/2" (TYP.)
 2. SUPPORT EACH LIGHT FIXTURE INDEPENDENTLY OF CEILING GRID WITH 1 #12 WIRE AT TWO CORNERS DIAGONALLY ACROSS FROM ONE ANOTHER.
 3. ALL MAIN AND CROSS TEES, THEIR SPICES AND INTERSECTING CONNECTIONS SHALL BE ADEQUATE TO RESIST 72 lbs. IN TENSION.

SUSPENDED CEILING SUPPORT

SCALE: N.T.S.

LEGEND

- ⊕ THERMOSTAT.
- ☐ 8"x12" EXHAUST VENT GRILL AND BACK DRAFT DAMPER.
- ⊙ 2x2 SUPPLY AIR DIFFUSER.
- ▨ 8"x16" SUPPLY AIR DIFFUSER.
- ▩ 2x2 RETURN AIR GRILL IN CONFERENCE RM.
- ▧ 2x4 RETURN AIR GRILL.
- ▦ 2x4 FLOURESCENT LIGHTING.
- ▤ 2x2 FLOURESCENT LIGHTING.
- ⚡ EMERGENCY LIGHTING WITH 90 MINUTE BATTERY BACKUP.
- ⊕ WALL OR CEILING MOUNTED EMERGENCY EXIT LIGHT.
- ⊙ WALL MOUNTED LIGHT SWITCH.
- ⊕ 3-WAY WALL MOUNTED LIGHT SWITCH.
- ⊕ MOTION SENSOR, LOCATED IN RESTROOM.