

**DAMMON**  
ENGINEERING, INC.

CHIEF ENGINEER  
EMMETT  
DAMMON, P.E.

CHIEF ARCHITECT  
ROBERT  
WILTSE

554 OLD SPANISH TRAIL  
SLIDELL, LA. 70458  
OFFICE: 985-649-5832  
FAX: 985-641-5950

WWW.DAMMONENGINEERING.COM  
WEBSITE:  
EMAIL:  
DAMMONENG@BELLSOUTH.NET

ARCHITECTURE  
ENGINEERING  
STUDIES  
PLANNING  
INVESTIGATION  
EXPERT WITNESS

TM#15  
NEW ORLEANS  
FACILITY

TEXTRON MARINE  
& LAND SYSTEMS  
19401 CHEF MENTUER HWY  
NEW ORLEANS, LA  
70129

FLOOR PLAN  
EAST SIDE

REV:

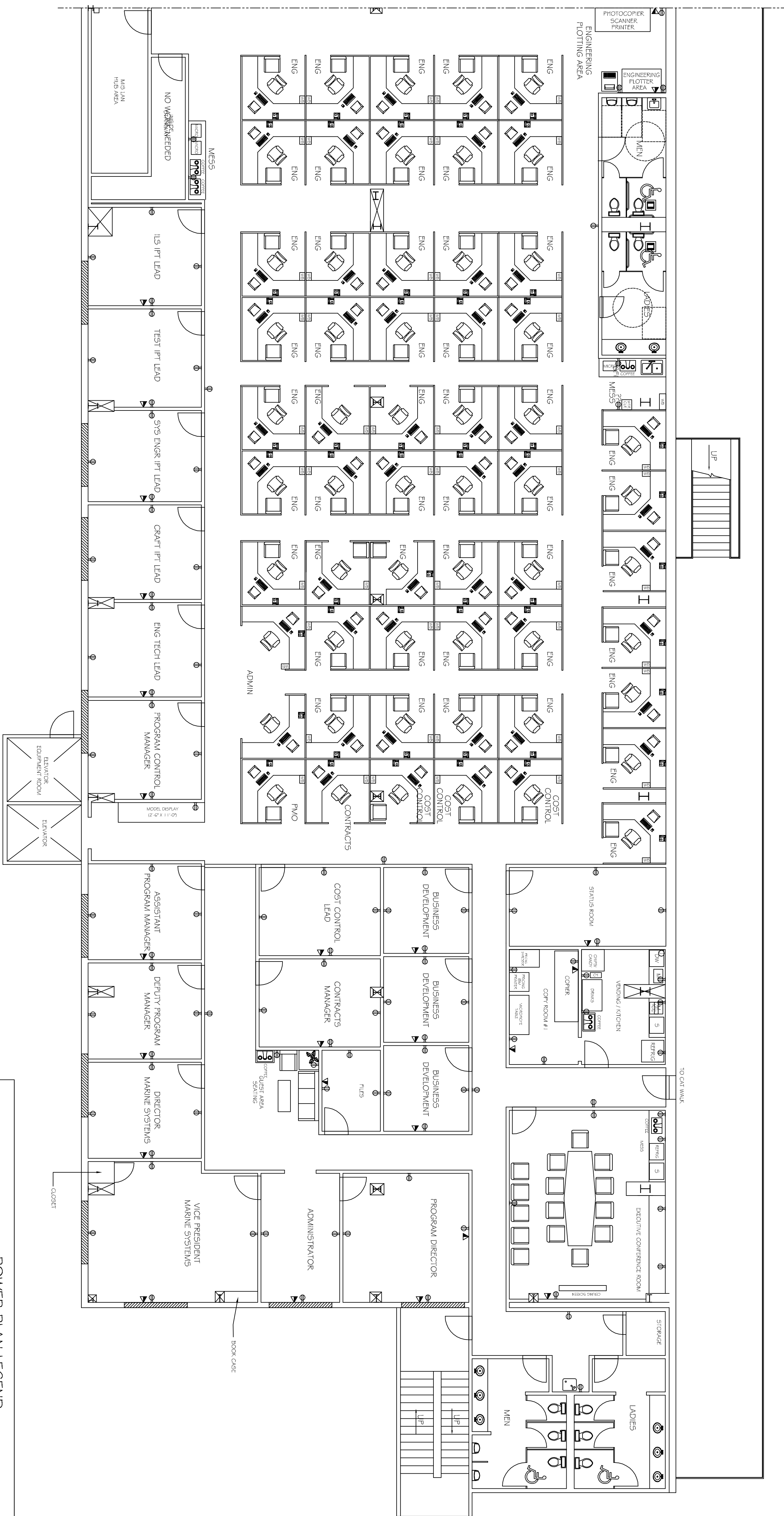
SCALE:

JOB#: 2133

DATE: 04-04-12

SHEET

E-1



POWER PLAN EAST  
SCALE: 1/8" = 1'-0"

POWER PLAN LEGEND

SYML	DESCRIPTION	QTY	EQ. NOTE	COMMENTS
⊖	STANDARD 120V DUPLEX RECEPTACLE @ 18" AFF (UNLESS NOTED)	30		
⊖ <sub>D</sub>	DEDICATED RECEPTACLE SEE PANEL SCHEDULE FOR CIRCUIT SIZE	20	4	
⊖ <sub>GFI</sub>	GFI RECEPTACLE	-		ALL OUTLETS WITHIN 48" OF A WATER SOURCE SHALL BE GFI
⊖ <sub>WP</sub>	WEATHER PROOF 120V DUPLEX RECEPT. @ 30" AFF (UNLESS NOTED)	4		
⊖ <sub>C</sub>	RECEPTACLE @ 6" ABOVE COUNTER	-		
⊖	STANDARD 120V QUAD RECEPTACLE @ 18" AFF (UNLESS NOTED)	11		
⊖	STANDARD 220V DUPLEX RECEPTACLE @ 18" AFF (UNLESS NOTED)			
⊖	STANDARD 120V FLOOR RECEPTACLE @ 18" AFF (UNLESS NOTED)	17		
⊖	STANDARD 120V DUPLEX RECEPTACLE ABOVE DECK	7		
⊖	QUAD CAT 5 JACK WITH FACEPLATE NETWORKING CONNECTION	8		
⊖	POWER DISCONNECT	17		
⊖	ELECTRIC WATER HEATER SIZE AS NOTED	2		
⊖	AIR CONDITIONING COND. UNIT SEE MECH SHEETS FOR UNIT DETAILS	7		

NOTES:  
1. CONNECT ALL EMERGENCY / EXIT LIGHT FIXTURES TO NEAREST CONSTANT POWER SOURCE.

OF