



ENLARGED FLOOR PLANS
STORE NUMBER 2274
FREMAUX TOWN CENTER
SLIDELL, LOUISIANA



DATE:	APRIL 15, 2013
ISSUE:	ISSUE FOR PERMIT
NO.:	

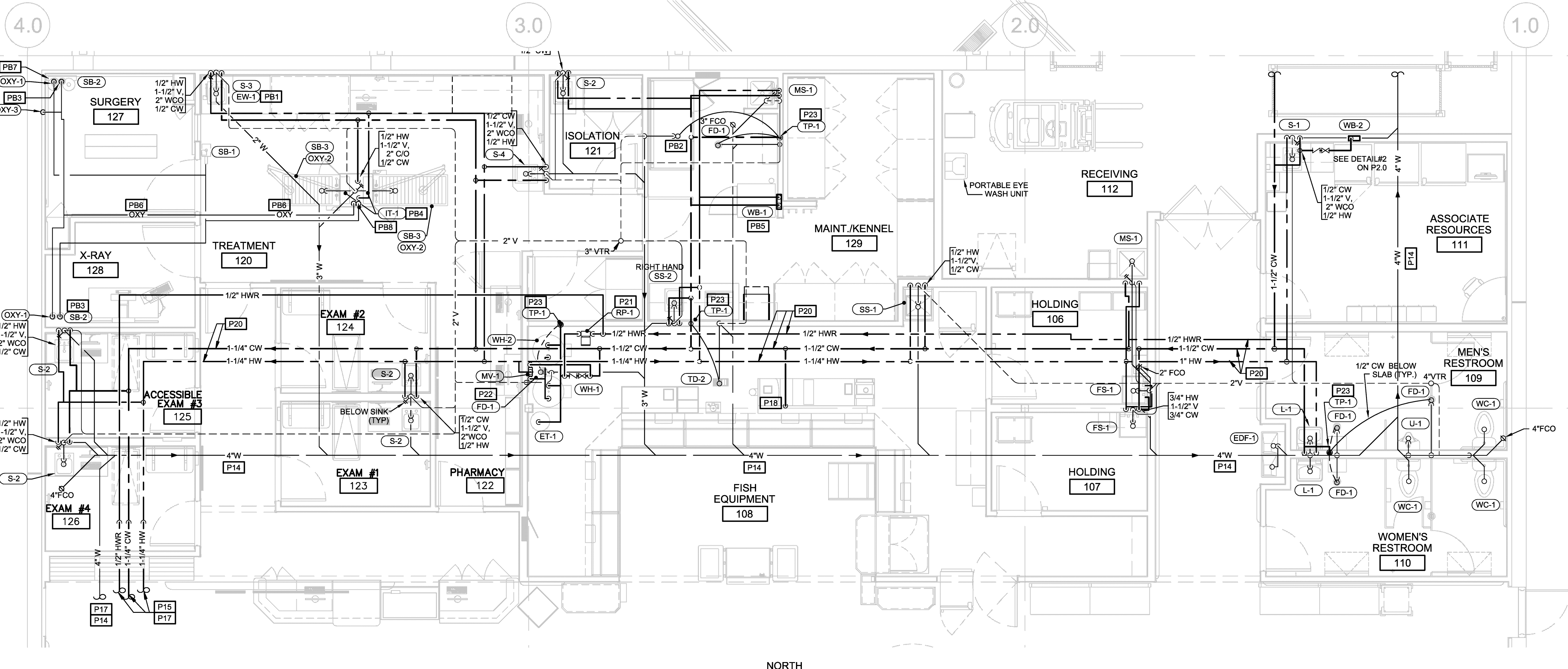
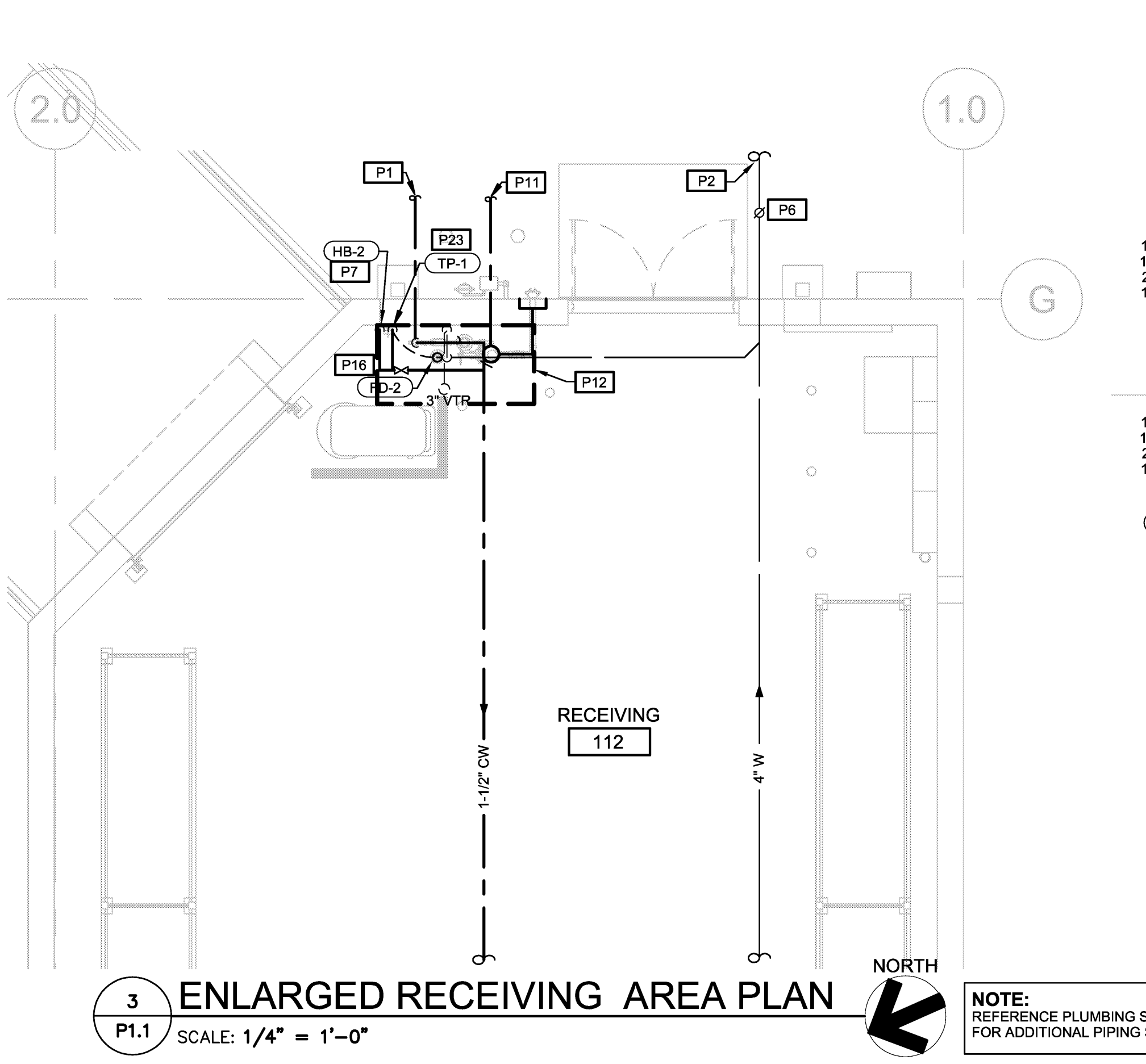
ROBERT M. LUCIUS, ARCHITECT
 1200 Marshall St.
 Metairie, LA 70002
 504.885.8888
 www.rmlucius.com



Job No: 0413995-081
 Scale: 1/4" = 1'-0"
 Drawn: _____
 Checked: _____
P1.1

REFER TO ARCHITECTURAL DRAWINGS FOR DIMENSIONED LOCATIONS OF FLOOR DRAINS AND TRENCH DRAINS.
 SINK CLEANOUT TO BE INSTALLED UNDER THE SINK.

CEILING PLAN @ SURGERY & X-RAY
 (RP-1) MOUNTING ELEVATION
 SCALE: NONE



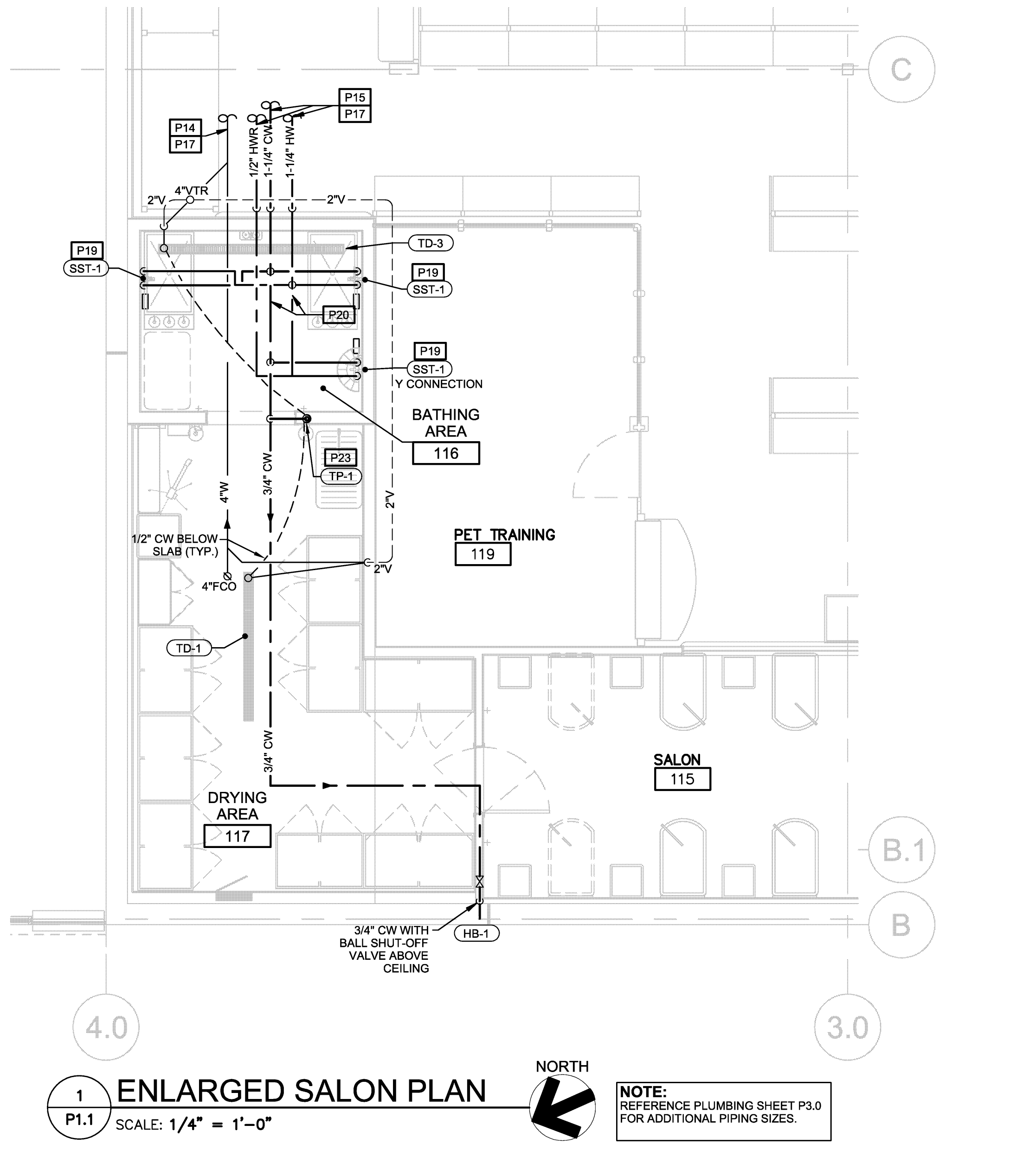
2 ENLARGED SUPPORT AREA PLAN
 SCALE: 1/4" = 1'-0"

NOTE: REFERENCE PLUMBING SHEET P3.0 AND DETAIL #10 ON P2.0 FOR ADDITIONAL PIPING SIZES.

3 ENLARGED RECEIVING AREA PLAN
 SCALE: 1/4" = 1'-0"

PLUMBING FIXTURE SCHEDULE

FIXTURE DATA				FAUCET DATA				DESCRIPTION				
MARK	MANUFACTURER	MODEL	CW	HW	TRAP	WASTE	VENT		MODEL	MANUF.	CW	HW
EDF-1	OASIS	PG8ACSL-U	1/2"	-	1-1/4"-1-1/2"	2"	1-1/2"	-	-	-	-	TWO STATION WALL MOUNT WATER COOLER, BARRIER-FREE ACCESS (ADA), FRONT ONLY EASY TOUCH CONTROL, HIGH UNIT ON LEFT.
ET-1	AMTROL	ST-25V	1"	-	-	-	-	-	-	-	-	PROVIDE ONE AMTROL MODEL ST-25 EXPANSION TANK, INSTALL PER MANUFACTURER'S INSTRUCTIONS, FOR TWO TANK WATER SYSTEM.
EW-1	ENCON	01040128	1/2"	1/2"	-	-	-	-	-	-	-	DECK MOUNTED SWING AWAY EYE WASH @ (S-3) INSTALLED WITH 1/2" THERMOSTATIC MIXING VALVE MODEL No. E8150 BY POWERS, SERVING THE EYE WASH ONLY.
FD-1	ZURN	ZN415-SB-2NH-P	-	-	-	3"	1-1/2"	-	-	-	-	CAST IRON BODY W/ 5% ADJUSTABLE NICKEL BRONZE STRAINER HEAD, PROVIDE 1/2" TRAP PRIMER & DEEP SEAL TRAP.
FD-2	ZURN	Z605-HP-VP	-	-	-	4"	2"	-	-	-	-	12" TOP DRAIN, DURA-COATED CAST IRON BODY WITH BOTTOM OUTLET, SEE PANE AND COMBINATION OF MEMBRANE FLASHING CLAMP AND FRAME FOR HEAVY-DUTY DEEP FLANGE SLOTTED GRATE, VANDAL PROOF SECURED TOP.
FS-1	ZURN	MS2620	-	-	2"	2"	1-1/2"	Z-812M-SB1B	ZURN	1/2"	1/2"	INTERGRAL VACUUM BREAKER, FIBERGLASS ONE COMPARTMENT SINK W/ 3/8" VTR W/ CLEANOUT PLUG, W/OPTIONAL BACK SPLASH, POLY. LEGS, SECURE TO FLOOR.
HB-1	ZURN	Z-1321	3/4"	-	-	-	-	-	-	-	-	CERAMIC CONTROL W/ INTEGRAL VACUUM BREAKER (SEMI RECESSED).
HB-2	ZURN	Z-80502	1/2"	-	-	-	-	-	-	-	-	PROVIDE VACUUM BREAKER AND "Y" CONNECTION.
IT-1	-	-	-	-	-	-	-	Z831C4-HS6-2F	ZURN	1/2"	1/2"	GOOSE NECK FAUCET WITH 8" VINYL HOSE, AERATOR WRIST BLADE HANDLES & HOSE SPRAY
L-1	KOHLER	K-2032 GREENWICH	-	-	2"	1-1/2"	-	Z7443-WF-FC	ZURN	1/2"	1/2"	20"x18" WALL HUNG ADA W/FRONT OVERFLOW, ZURN Z1231-EZ BACK TO BACK FLOOR MOUNTED FIXTURE CARRIER, 4" CENTERS FOR FAUCET AND P-TRAP WITH CLEANOUT PLUG. INSULATE EXPOSED DRAIN & WATER PIPES W/ TRUEBRO LAV GUARD KIT #102, FAUCET W/TEMPERATURE LIMIT STOP.
MS-1	FLORESTONE	30 (LH OR RH)	-	-	-	3"	1-1/2"	Z843M1	ZURN	3/4"	3/4"	TERRAZZO 3/4"x2 1/2" DEEP, 3" DRAIN, W/FLANGE ON TWO SIDES, FAUCET W/ PAL HOOK & INTEGRAL VACUUM BREAKER, 3" CAST IRON TRAP & H453-BB FLAT STAINLESS STEEL STRAINER, PROVIDE ZURN Z8946-1 PROTECTIVE COVERS, SINGLE LEVER SUPPLY. PROVIDE 3" WIDE X 24" LONG S.S. MOP HANGER W/ 3 RUBBER TOOL GRIPS FITTING W/ GRID STRAINER.
MV-1	POWERS	HYDROGUARD MM432	2"	2"	-	-	-	-	-	-	-	PROVIDE ONE POWERS HYDROGUARD MIXING VALVE, SET AT 110°F, FOR TWO TANK WATER HEATER SYSTEM.
OXY-1	HJC (SEE REQUIRED VENDOR SHEET)	OXY-26100-3	-	-	-	-	-	-	-	-	-	CEILING OXYGEN DROP- INCLUDES 30" OXYGEN HOSE & OHMEDA STYLE FEMALE QUICK DISCONNECT / OXY610
OXY-2	HJC (SEE REQUIRED VENDOR SHEET)	OXY-26100-2	-	-	-	-	-	-	-	-	-	OXYGEN CONSOLE OUTLET- DISS / QTY2 / OXY-26100-2, MOUNTED IN CHASE FEEDING WET / DRY TABLE OUTLETS ON SIDE OF TABLES.
OXY-3	HJC (SEE REQUIRED VENDOR SHEET)	OXY-26100-1	-	-	-	-	-	-	-	-	-	OXYGEN WALL OUTLET- DISS / OXY-26100-1 GREEN OXYGEN LINE WITH FEMALE DISS FITTING- 5' LONG / QTY 1 / OXY643-5 OXYGEN REGULATOR- HAND TIGHT / QTY 1 / BAN509
RH-1	WOODFORD	SRH-MS	3/4"	-	-	-	-	-	-	-	-	NON-FREEZE ROOF HYDRANT WITH MOUNTING SYSTEM (CAST IRON HYDRANT SUPPORT, UNDER DECK FLANGE, WELL SEAL, EPDM BOOT AND MOUNTING HARDWARE) AND TESTABLE DUAL CHECK BACKFLOW PREVENTER
RP-1	BELL & GOSSETT	NBF 22U	-	1/2"	-	-	-	-	-	-	-	BRONZE BODY SYSTEM LUBRICATED CIRCULATOR 92 WATTS, 115 V 1 PHASE 3000 RPM 4 GPM @ 12 F.O.W. WITH B&G AQUASTAT MODEL AQ-1/2 AND 1/2" BRONZE UNION SWEAT MODEL # UC-12S.
S-1	ELKAY	PSR1517	-	-	1-1/2"	2"	1-1/2"	Z831C4-2F	ZURN	1/2"	1/2"	20 GAUGE 302 S.S. SINK, 12"x12" x 7-1/4" 3-HOLE PUNCHING, PROVIDE LK-35 ONE PIECE CONICAL STRAINER, P-TRAP W/CLEANOUT PLUG, PROVIDE FAUCET WITH SWING SPOUT & AERATOR.
S-2	ELKAY	PSR1517	-	-	1-1/2"	2"	1-1/2"	Z826B1-4F	ZURN	1/2"	1/2"	20 GAUGE 302 S.S. SINK, 15"x17" x 7-1/4" 4-HOLE PUNCHING, PROVIDE LK-35 ONE PIECE CONICAL STRAINER, PROVIDE FAUCET WITH SWING SPOUT & AERATOR, PROVIDE WRIST BLADE HANDLES WHICH OPERATE "ON" UP AND "OFF" DOWN, IN THE "OFF" POSITION THE HANDLES SHALL BE HORIZONTAL.
S-3	ELKAY	DLR1722-10	-	-	1-1/2"	2"	1-1/2"	Z812S4	ZURN	1/2"	1/2"	18 GAUGE 302 S.S. SINK, 17"x22" x 10" 2-HOLE PUNCHED, PROVIDE LK-35 ONE PIECE CONICAL STRAINER, PROVIDE FAUCET WITH RIGID SPOUT, WINGTIP HANDLES, INSTALL HANDLES PARALLEL WITH WALL. INSTALL EYE WASH PER MANUFACTURERS RECOMMENDATIONS.
S-4	ELKAY	DLR1722-10	-	-	1-1/2"	2"	1-1/2"	Z826B1-4F	ZURN	1/2"	1/2"	18 GAUGE 302 S.S. SINK, 17"x22" x 10" 1-HOLE PUNCHED, PROVIDE LK-35 ONE PIECE CONICAL STRAINER, PROVIDE FAUCET WITH RIGID SPOUT & AERATOR, PROVIDE WRIST BLADE HANDLES WHICH OPERATE "ON" UP AND "OFF" DOWN, IN THE "OFF" POSITION THE HANDLES SHALL BE HORIZONTAL.
SB-1	HJC (SEE REQUIRED VENDOR SHEET)	SCAVENGER	-	-	-	-	2"	N/A	-	-	-	SCAVENGER VACUUM POWER UNIT, MOUNT +12" O.F.F. - FURNISHED AND INSTALLED BY PLUMBING CONTRACTOR. PROVIDE 2" COPPER VTR, SEE DETAIL 5,6&7 ON P2.0 PROVIDE FOUR (4) DROPS, SEE ENLARGED PLAN ON P1.1.
SB-2	HJC (SEE REQUIRED VENDOR SHEET)	SCAVENGER PIPING DROP	-	-	-	-	-	-	-	-	-	1-1/2" PREFINISHED COPPER PIPING DOWN THRU CEILING, PROVIDE LONG RADIIUS ELBOWS AND EXTEND BELOW FINISH CEILING - SEE DETAIL ON SHEET P2.0.
SB-3	HJC (SEE REQUIRED VENDOR SHEET)	WET TABLE OUTLET	-	-	-	-	-	-	-	-	-	WET TABLE EVAC OUTLET KIT WITH 90 DEGREE ELBOW, 22MM WALL OUTLET NIPPLE, 22MM INLET PVC TUBE ATTACHED.
SS-1	GRIFFIN	C60-144-00x14	-	-	2"	2"	1-1/2"	Z843M1-CS	ZURN	1/2"	1/2"	PROVIDE 5/8"x4"-27 MALE THREAD X 3/4" FEMALE HOSE THREAD ADAPTER (CAN BE PURCHASED AT LOWES) AND P-TRAP W/CLEANOUT PLUG.
SS-2	GRIFFIN	TUB-630-CUSTOM (RIGHT)	1/2"	-	1-1/2"	2"	1-1/2"	FG-205	GRIFFIN	1/2"	1/2"	SECURE SINK TO WALL AND CAULK TOP OF BACKSPLASH TO WALL WITH CLEAR SILICONE, PROVIDE P-TRAP WITH CLEANOUT PLUG.
SST-1	-	-	-	-	-	-	-	Z843L1-90-YJ	ZURN	3/4"	3/4"	POLISHED CHROME 8" WASH DOWN FAUCET W/ VACUUM BREAKER SPOUT, INTEGRAL HOSE THREADED SPOUT, VANDAL RESISTANT COLOR CODED LEVER HANDLES.
TD-1	ZURN	PERMA-TRENCH Z-886-HPP-GL-(2) E1-U4-JC	-	-	4"	4"	2"	-	-	-	-	6" WIDE PRE-SLOPED TRENCH DRAIN, W/ INTEGRAL TOP FRAME, INTERLOCKING ENDS & RADIUSSED BOTTOM, P/888HPP HEEL-PROOF POLYETHYLENE GRATE, 4"NH BOTTOM OUTLET, LENGTH OF DRAIN PER DIMENSIONS ON P1.1 DWG
TD-2	ZURN	PERMA-TRENCH Z-886-(2) E1-U3-SPECIAL	-	-	3"	3"	2"	-	-	-	-	8606N SECTION 10" W/ REBAR CLIPS @ CENTER WITHOUT GRATE, 6"x10"x8" DEEP, GRATE TO BE FLUSHED WITH FINISHED FLOOR, NO-LIP.
TD-3	ZURN	PERMA-TRENCH Z-886-HPP-GL-(2) E1-U4-DB	-	-	4"	4"	2"	-	-	-	-	6" WIDE PRE-SLOPED TRENCH DRAIN, W/ INTEGRAL TOP FRAME, INTERLOCKING ENDS & RADIUSSED BOTTOM, 4"NH BOTTOM OUTLET, LENGTH OF DRAIN PER DIMENSIONS ON P1.1 DWG, BOTTOM DOME STRAINER.
TP-1	PPP	P1-500 WITH TAPPED P-TRAP ADAPTER	1/2"	-	-	-	-	-	-	-	-	INTEGRAL BACKFLOW PREVENTER & VACUUM BREAKER PORT & DU-2 DISTRIBUTION UNIT, ROUTE 1/2" PEX POLYETHYLENE TUBING DOWN IN WALL AND BELOW SLAB TO P-TRAP, SEE DETAIL ON P2.0, INCLUDE TAPPED P-TRAP ADAPTER.
WB-1	OATEY	38934	3/4"	3/4"	-	-	-	-	-	-	-	(2) 1/4" BALL VALVES (TOP MOUNTED), SWEAT CONNECTION WITH VACUUM BREAKERS, PLASTIC BOX, REFER TO SHEET P2.0 FOR DRAIN PUNCH-OUT INFORMATION.
WB-2	SILOX CHEIF	696 SERIES 'OX' BOX	1/2"	-	-	-	-	-	-	-	-	ABS OUTLET BOX WITH FRAM AND BRACKET, PROVIDE BALL VALVE WITH HAMMER ARRESTER & 1/4" OUTLET, PROVIDE WATTS SERIES 7 DOUBLE CHECK VALVE IN 1/2" SUPPLY LINE.
WC-1	WALDFIELD	148-122 QUANTUM - ADA	1/2"	-	-	4"	2"	-	-	-	-	FLOOR MOUNTED VITREOUS CHINA 1.6 GALLON FLUSH, WITH POLISHED CHROME PUSH BUTTON ACTUATOR, SMARTHIC ELONGATED FRONT TWO PIECE, PRESSURE-ASSIST OWN WATER CLOSURE, 12" ROUGH-IN, W/ VANDAL RESISTANT KIT, PROVIDED CHURCH OPEN FRONT SEAT
WH-1	BRADFORD WHITE	LD-50-S3-3	3/4"	3/4"	-	-	50	-	-	-	-	ELECTRIC WATER HEATER, WITH A RATED STORAGE CAPACITY NOT LESS THAN 50 GALLONS, (2) 6KW SIMULTANEOUS INPUT OF 12KW, 480 VOLTS/3 PHASE WITH 20 AMP FULL SWITCH, AND A MINIMUM RECOVERY OF 50 GPH @ 100°F TEMPERATURE RISE. THE TANK SHALL BE LINED WITH VITREOUS ENAMEL AND SHALL HAVE A BOLTED HAND CLEANOUT. THE TANK SHALL HAVE EXTRUDED MAGNESIUM ANODE RODS INSTALLED IN SEPARATE HEAD COUPLING AND EXTENDED TO WITHIN 3" OF BOTTOM. THE HEATER SHALL BE INSULATED WITH NO LESS 3" OF NON-CFC FOAM. THIS WATER HEATER SHALL BE EQUIPPED WITH AN ASME RATED T & P RELIEF VALVE. THE ENTIRE INSULATION SHALL BE MADE IN COMPLIANCE WITH STATE AND LOCAL CODES AND ORDINANCES. T&P RELIEF LINE SHALL BE TERMINATED OVER FLOOR DRAIN (PD-1) FLOOR RIM WITH 2" AIR GAP.



1 ENLARGED SALON PLAN
 SCALE: 1/4" = 1'-0"

NOTE: REFERENCE PLUMBING SHEET P3.0 FOR ADDITIONAL PIPING SIZES.