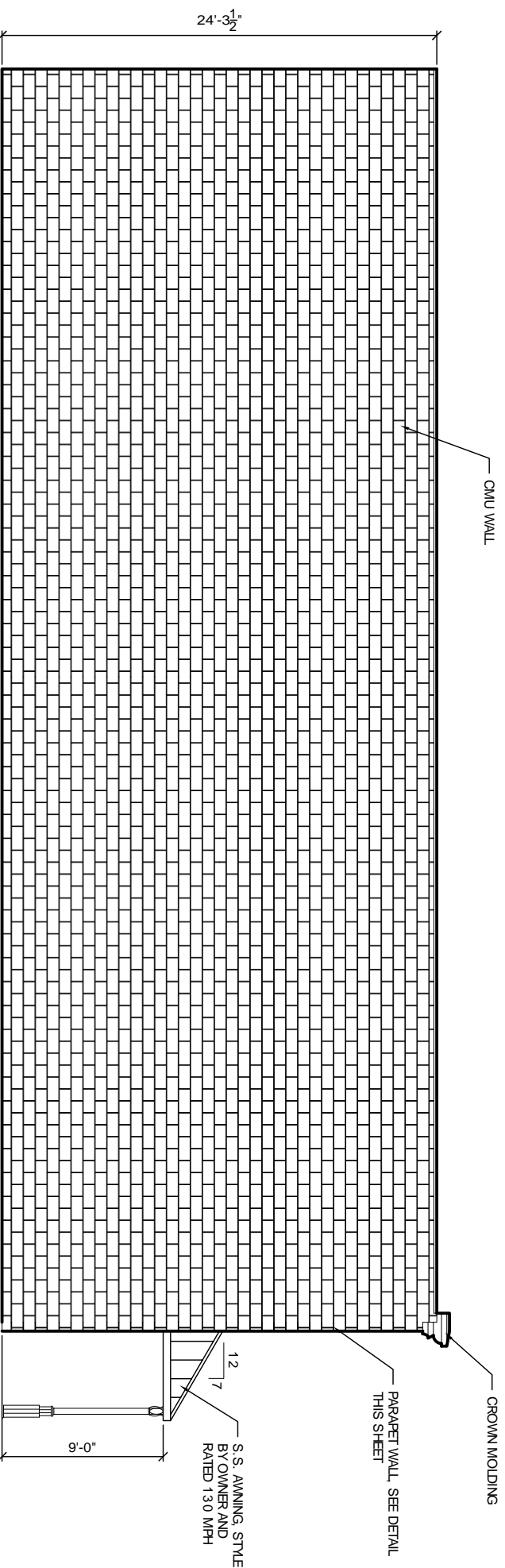
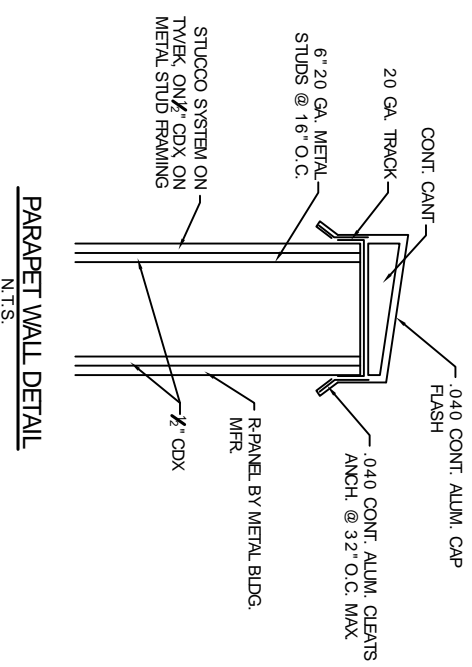


FRONT ELEVATION
SCALE 1/4" = 1'-0"

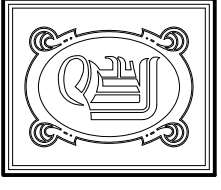


LEFT ELEVATION
SCALE 1/4" = 1'-0"



PARAPET WALL DETAIL
N.T.S.

- EXTERIOR STUCCO SPECIFICATIONS:**
1. COMPLY WITH ASTM C-841 AND C-842. PROVIDE 3/4" OVERALL THICKNESS ON SELF-FURRING DIAMOND MESH GALVANIZED METAL LATH, 3.4 LB. PER SQUARE YARD, ON T/WK. STUCCO WRAP ON 1/2" CDX PLYWOOD SCREWED TO 6" 20 GA. METAL STUDS @ 16" O.C. ATTACH LATH AT DIMPLES ONLY, WITH NON-CORROSIVE SCREWS.
 2. METAL LATH AND ALL ACCESSORIES TO BE EQUAL TO "AMICO", TO INCLUDE CORNER BEADS, CASING BEADS, BASE SCREWS AND CONTROL JOINTS. ALL INSTALLED WITH NON-CORROSIVE SCREWS. ALL ACCESSORIES TO BE ZINC. ALL CORNERS TO BE MITERED.
 3. STUCCO TO BE INSTALLED IN THREE COATS: SCRATCH, BROWN AND FINISH. FINISH COAT TO BE ORIENTAL STUCCO WITH SAND FLOAT FINISH BY U.S. GYPSUM.
 4. COMPLY WITH MANUFACTURERS AND INDUSTRY RECOMMENDATIONS. INSTALL LATH IN ACCORDANCE WITH ASTM C-1063.
 5. SUBMIT DATA / CUT SHEETS FOR ALL ITEMS IF REQUIRED.



DAMMON ENGINEERING, INC.

CHIEF ENGINEER
EMMETT DAMMON, P.E.
CHIEF ARCHITECT
ROBERT WILTSE

1095 FLORIDA AVENUE
SUDDLL, LA 70456
OFFICE: 985-649-5832
FAX: 985-641-3950

WEBSITE:
WWW.DAMMONENGINEERING.COM
EMAIL:
DAMMONENG@BELLOUTH.NET

ARCHITECTURE
ENGINEERING
STUDIES
PLANNING
INVESTIGATION
EXPERT WITNESS

**NEW OFFICE/
WAREHOUSE**

ROSS & MIKE GUASTELLA
LOT #10 TAOS STREET
SUDDLL, LA 70458

**BUILDING
ELEVATIONS**

REV:

SCALE AS NOTED

JOB#: 1572

DATE: 6-20-08

SHEET 11

A-3