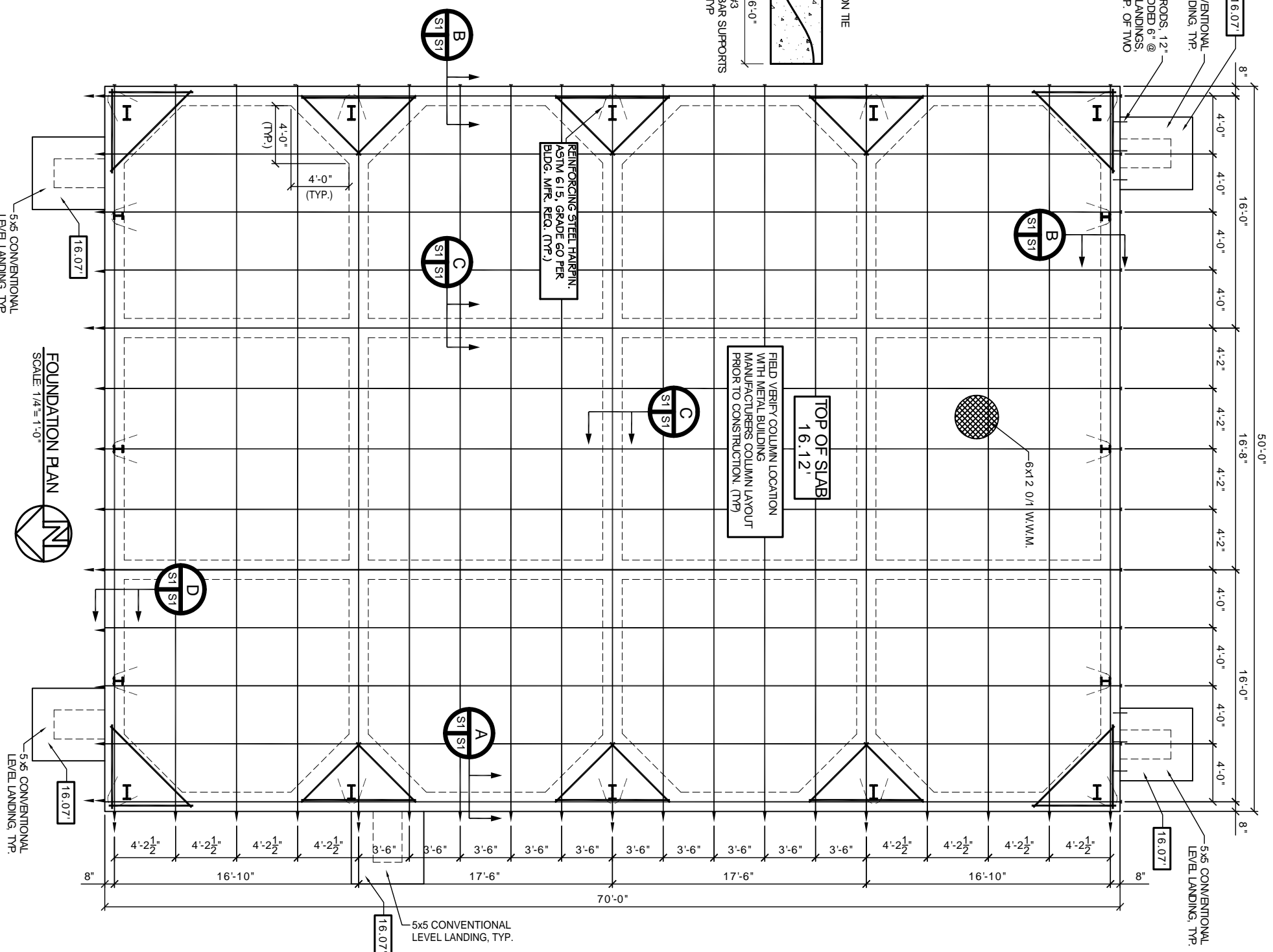
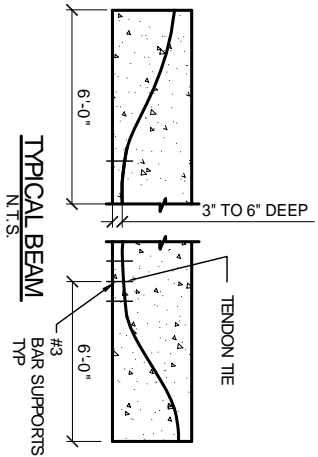
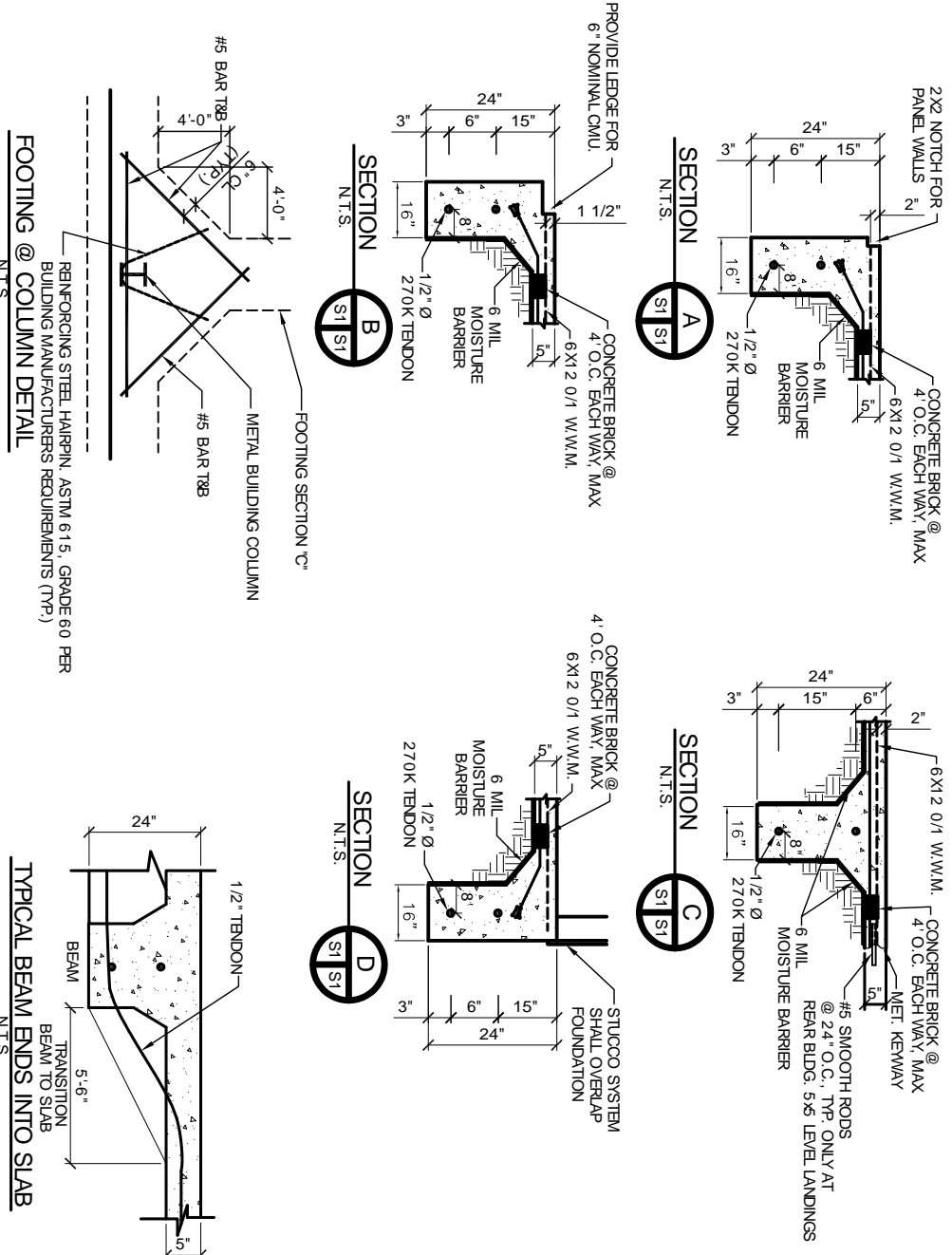


FOUNDATION GENERAL NOTES:

- THE INTENT OF THIS PLAN IS TO PROVIDE INFORMATION FOR PLACEMENT OF POST TENSION SYSTEM TENDONS AND (WHERE SHOWN) PILING. ONLY IT IS THE RESPONSIBILITY OF THE GENERAL CONTRACTOR TO VERIFY ALL DIMENSIONS, BRICK LEDGES, BLOCK OUTS, OFFSETS, ETC., SHOWN ON THESE PLANS. TO ASSURE AGREEMENT WITH ARCHITECTURAL PLANS.
- FILL AS A MINIMUM QUALITY. SHALL BE 4% CLVA AND 6% SANDY MIXTURE PLACED IN 6" LIFTS AND COMPACTED TO MINIMUM 95% STANDARD PROCTOR. FOOTINGS ARE DESIGNED TO USE WITH SOIL PRESSURE OF 2000 LBS. PER SQUARE FOOT OR MORE PRIOR TO PILE DRIVING (WHERE THESE ARE REQUIRED). IT IS RECOMMENDED THAT OWNER VERIFY PILE SIZE AND CAPACITY BY CONTRACTING THE SERVICES OF A SOILS ENGINEERING COMPANY, OR AS AN ALTERNATIVE, THAT OWNER VERIFY PILE SIZE AND CAPACITY BY CONTRACTING THE SERVICES OF A SOILS ENGINEERING COMPANY. REINFORCING STEEL SHALL BE PROVIDED WITH A TENSILE STRENGTH OF 1500 P.S.I. AT THE TIME OF STRESSING. ALL CONVENTIONAL REINFORCING STEEL SHALL BE ASTM DESIGNATION A-615 (GRADE 60) REINFORCING AND SHALL BE DETAILED AND ACCESSORIES PROVIDED IN ACCORDANCE WITH THE LATEST A.C.I. MANUAL OF STANDARD PRACTICE FOR DETAILING REINFORCED CONCRETE STRUCTURES.
- ALL PRESTRESSING STEEL SHALL CONSIST OF SEVERE-WIRE STRESS RELIEVED STRAND CONFORMING TO ASTM A-416. MINIMUM ULTIMATE TENSILE STRENGTH SHALL BE 270,000 P.S.I.. STRANDS SHALL BE COATED WITH A PERMANENT RUST PREVENTATIVE LIBERANT AND A PLASTIC SHEATH.
- REINFORCEMENT SHALL HAVE 3" COVER IN GRADE BEAM BOTTOMS, 2" COVER IN BEAM SIDES AND TOPS, 1 1/2" COVER IN SLAB TOPS AND BOTTOMS, UNLESS OTHERWISE SHOWN.
- DETAILED STRUCTURAL DRAWINGS WITH ARCHITECTURAL AND MECHANICAL DRAWINGS FOR ALL OPENINGS, INSERTS AND ANY OTHER PLANS FOR PIPES, CONDUITS, THIMBLES, ETC. TO PASS THROUGH CONCRETE SLAB OR BEAM, MUST NOT CONFLICT WITH REINFORCING. WHERE A CONFLICT OCCURS, PIPES, CONDUIT, ETC. ARE TO TAKE PRECEDENCE.
- PROVIDE A SINGLE LAYER OF VAPOR BARRIER UNDER CONCRETE SLAB.
- THE TENDON LOCATION AT THE END OF GRADE BEAM IS TO BE A MINIMUM OF 6" FROM THE TOP OF SLAB TO CENTER OF GRAVITY OF TENDONS.
- TENDONS TO BE STRESSED NO EARLIER THAN 7 DAYS AND NOT LATER THAN 14 DAYS AFTER PLACEMENT OF CONCRETE.
- FORMS TO BE STRIPPED NO LATER THAN 6 DAYS AFTER PLACEMENT OF CONCRETE.
- STRESSING:
 - 1/2" TENDON SHALL BE INITIALLY STRESSED TO 3.0K PER STRAND, BUT SHALL BE INITIALLY STRESSED TO 1.84K PER STRAND. 23. LOADING OF SLAB PRIOR TO TENSIONING SHALL NOT BE DONE WITHOUT THE APPROVAL AND DIRECTION OF THE SUPERVISING ENGINEER.
 - 2" TENDON SHALL BE ANCHORED AT 16.1K PER STRAND, BUT SHALL BE INITIALLY STRESSED TO 1.84K PER STRAND.
- PRIOR TO PILE DRIVING (WHERE PILES ARE REQUIRED) AND PROJECTS WHERE THE EXISTING FOUNDATION IS BEING MODIFIED TO USE SPREAD FOOTINGS OR SCREW PILES TO SUPPORT NEW LOADS, IT IS RECOMMENDED THAT THE CONTRACTOR OR OWNER VERIFY ALLOWABLE SOIL PRESSURES BY CONTRACTING THE SERVICES OF A SOILS ENGINEERING COMPANY, TO VERIFY SOIL CAPACITIES AND/OR PILE CAPACITIES. LOAD CAPACITIES ARE BASED ON LOCAL CODES AND HISTORICAL INFORMATION WHERE AVAILABLE, AND THE SOILS INFORMATION AVAILABLE FOR GENERAL AREAS MAY NOT BE COMMENSURATE WITH THIS PARTICULAR PROJECT.



DAMMON ENGINEERING, INC.
 CHIEF ENGINEER
 EMMETT DAMMON, P.E.
 CHIEF ARCHITECT
 ROBERT WILTSE

1095 FLORIDA AVENUE
 SUDELL, LA. 70458
 OFFICE: 985-649-5832
 FAX: 985-641-5950

WWW.DAMMONENGINEERING.COM
 EMAIL: DAMMONENG@DELTAOUTH.NET

ARCHITECTURE
 ENGINEERING
 STUDIES
 PLANNING
 INVESTIGATION
 EXPERT WITNESS

NEW OFFICE/ WAREHOUSE

GUASTELLA CONSTRUCTION
 LOT # 10 TAOS STREET
 SUDELL, LA 70458

FOUNDATION PLAN

SCALE AS NOTED
 JOB#: 1572
 DATE: 6-20-08
 SHEET 8

REV:
 OF 17