

DAMMON
ENGINEERING, INC.

CHIEF ENGINEER
EMMETT
DAMMON, P.E.
CHIEF ARCHITECT
ROBERT
WILTSE

1095 FLORIDA AVENUE
SLIDELL, LA. 70456
OFFICE: 985-649-5832
FAX: 985-641-5950

WEBSITE:
WWW.DAMMONENGINEERING.COM
EMAIL:
DAMMONENG@BLSOUTH.NET

ARCHITECTURE
ENGINEERING
STUDIES
PLANNING
INVESTIGATION
EXPERT WITNESS

J D PLAZA
345 GAUSE
BOULEVARD
WEST
SLIDELL, LA

REFLECTED
CEILING
PLAN

REV:

SCALE: AS NOTED

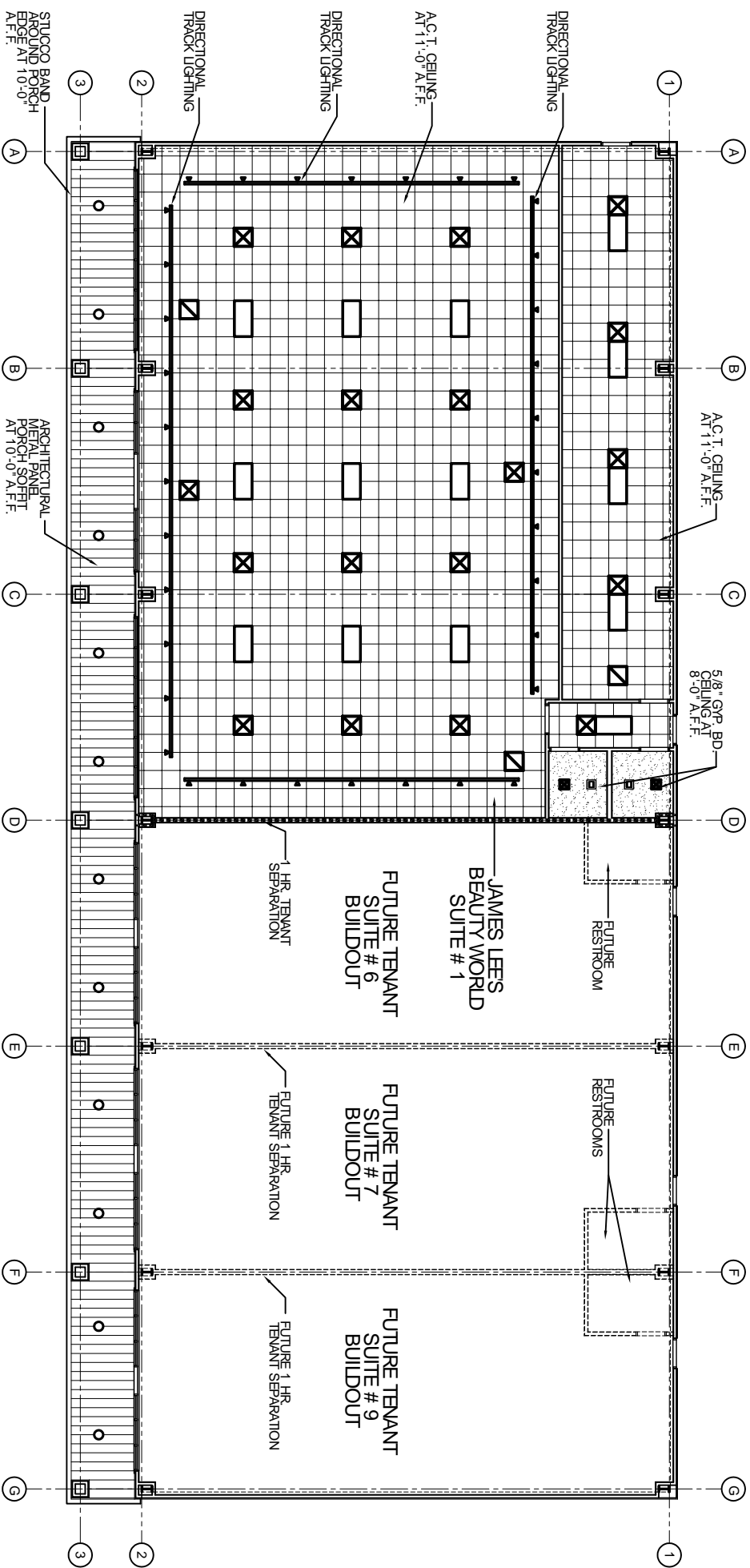
JOB#: 2037

DATE 10-01-09

SHEET 13

A-5

OF 19



REFLECTED CEILING PLAN
SCALE 1/8" = 1'

- LEGEND**
- 2'x4' FLUORESCENT LIGHT
 - DIRECTIONAL TRACK LIGHTING
 - EXHAUST FAN/LIGHT COMBO
 - EXTERIOR CAN LIGHT
 - SUPPLY AIR
 - RETURN AIR
 - A.C.T. CEILING GRID (2'x2')
 - GYPSUM BOARD CEILING