

DAMMON
ENGINEERING, INC.

CHIEF ENGINEER
EMMETT
DAMMON, P.E.

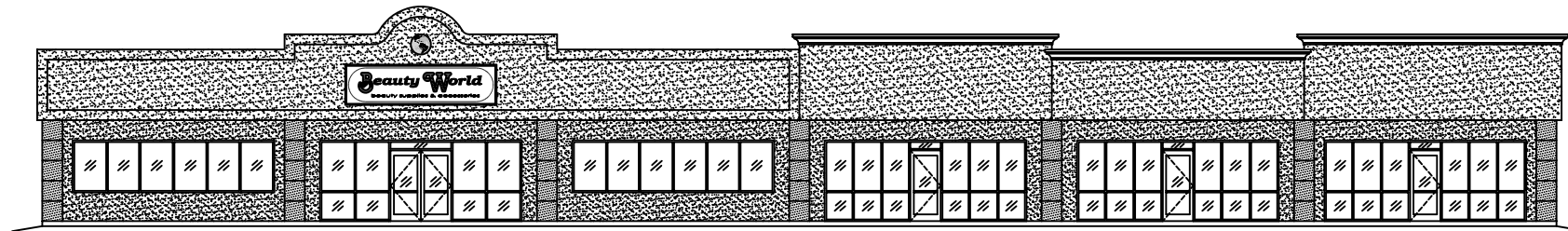
CHIEF ARCHITECT
ROBERT
WILTSE

1095 FLORIDA AVENUE
SLIDELL, LA. 70458
OFFICE: 985-649-5832
FAX: 985-641-5950

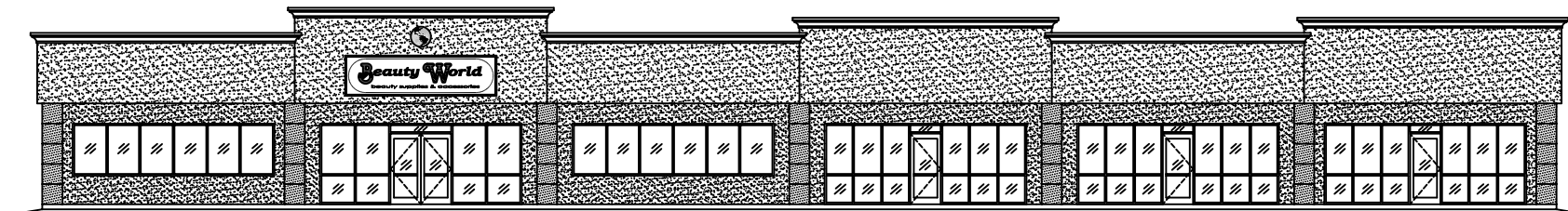
WEBSITE:
WWW.DAMMONENGINEERING.COM

EMAIL:
DAMMONENG@BELLSOUTH.NET

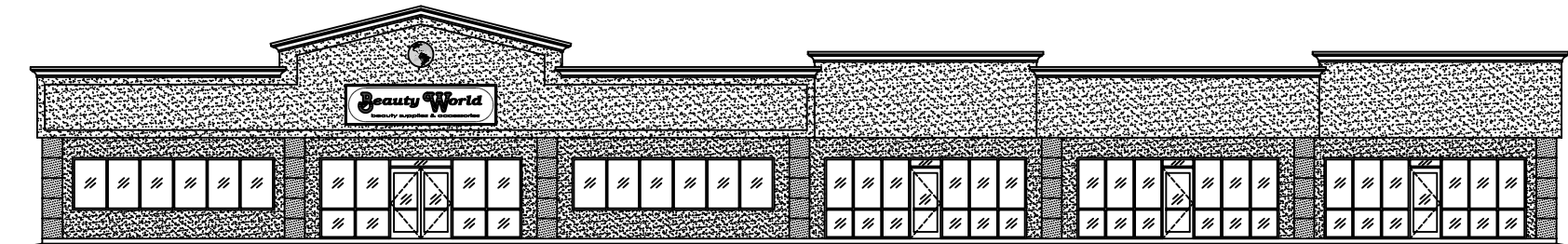
ARCHITECTURE
ENGINEERING
STUDIES
PLANNING
INVESTIGATION
EXPERT WITNESS



NORTH ELEVATION
SCALE: 1/8"=1'



NORTH ELEVATION
SCALE: 1/8"=1'



NORTH ELEVATION
SCALE: 1/8"=1'

JAMES LEE
CENTER
345 GAUSE
BOULEVARD WEST
SLIDELL, LA

EXTERIOR
ELEVATIONS

REV:

SCALE: AS NOTED

JOB#: 2037

DATE: 09-01-09

SHEET

A-3

OF