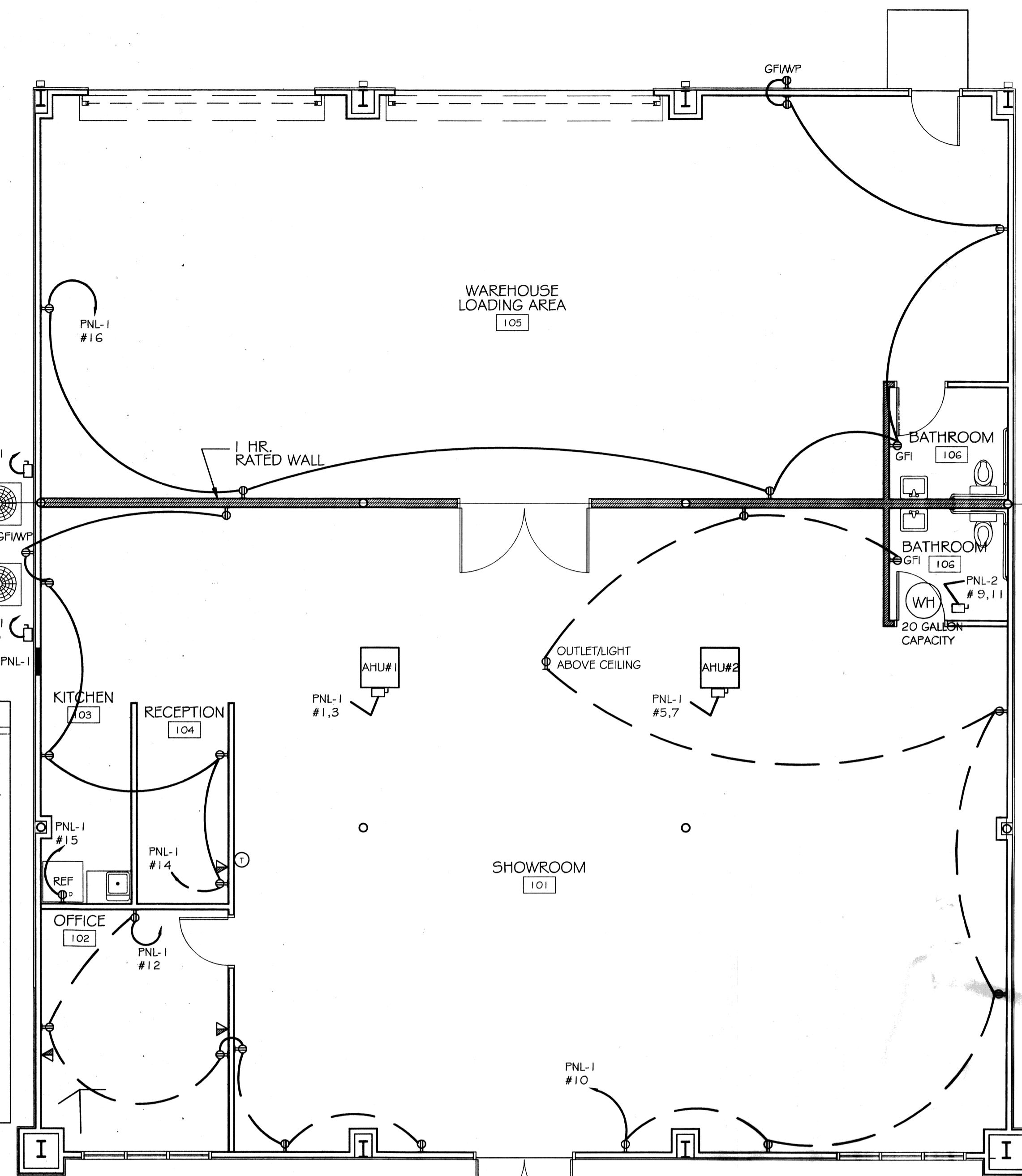


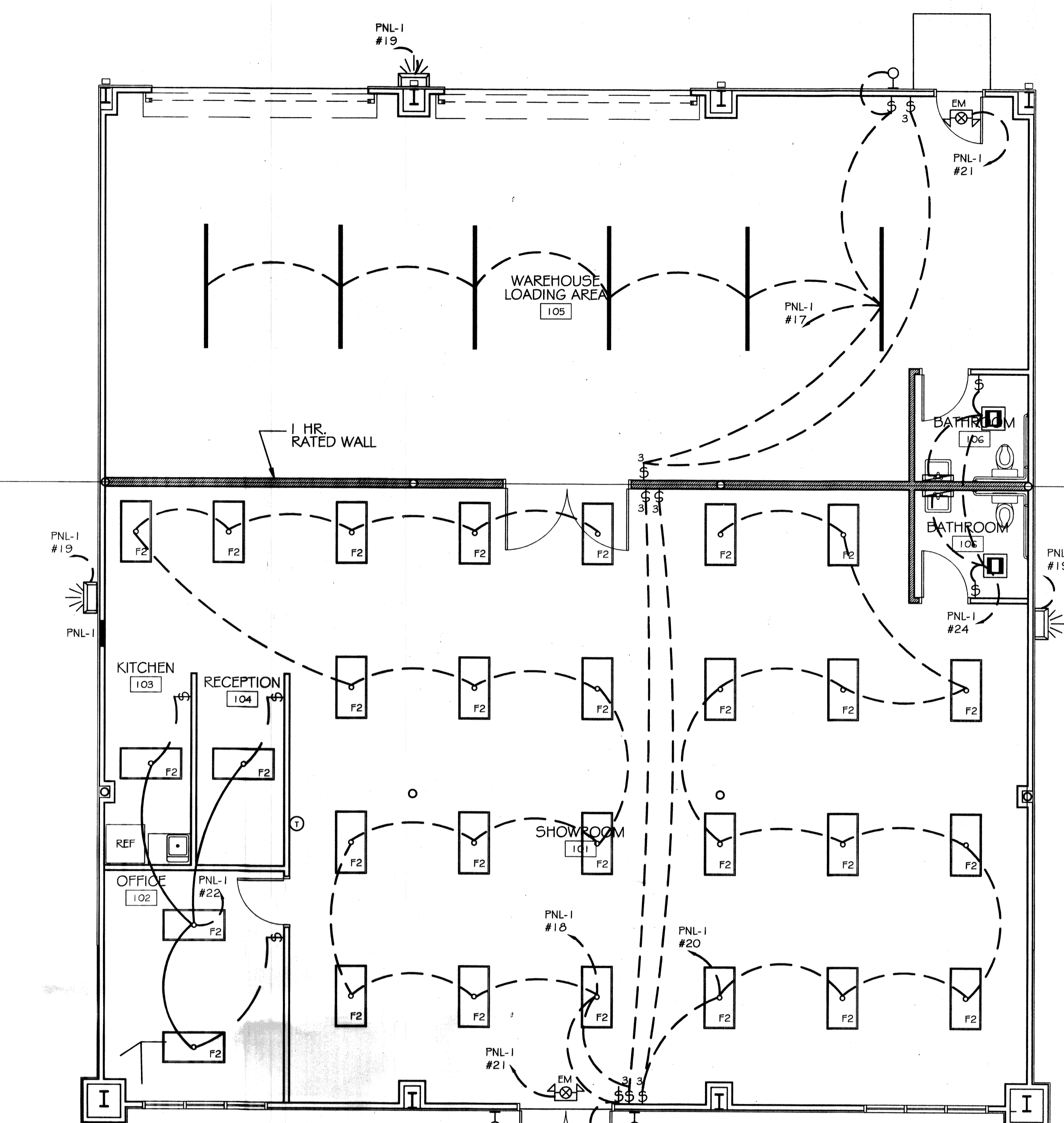
POWER PLAN LEGEND		
SYM	DESCRIPTION	COMMENTS
⊕	STANDARD 120V (UNLESS NOTED) 1 P/1P (UNLESS NOTED)	
⊕	DEDICATED RECEPTACLE SEE PANEL SCHEDULE FOR CIRCUIT SIZE	
⊕	GF RECEPTACLE	ALL OUTLETS WITHIN 40' OF A WATER SOURCE SHALL BE GF
⊕	WATER PROOF 120V (UNLESS NOTED) RECEPT. @ 30' AP (UNLESS NOTED)	
⊕	RECEPTACLE @ 6" ABOVE COUNTER	
⊕	QUAD CAT 5 JACK WITH FACILITATE NETWORKING CONNECTION	
⊕	POWER DISCONNECT	
⊕	ELECTRIC WATER HEATER SEE AS NOTED	
⊕	AIR CONDITIONING COND. UNIT SEE MECH SHEETS FOR UNIT DETAILS	

LIGHTING LEGEND		
SYM	DESCRIPTION	COMMENTS
⊕	VENT / LIGHT COMBINATION	
⊕	2x4 RECESSED FLUORESCENT 4'x8' 32W FLUORESCENT 120V	
⊕	WALL MTD. EMER. EXIT LIGHT W/ 90 MIN. BATT. BACKUP	
⊕	⊕	LIGHT ABOVE SINK
⊕	2 - 4' FLUORESCENT STRIPS	
⊕	WALL PACK 150W METAL HALIDE ON PHOTOCELL	

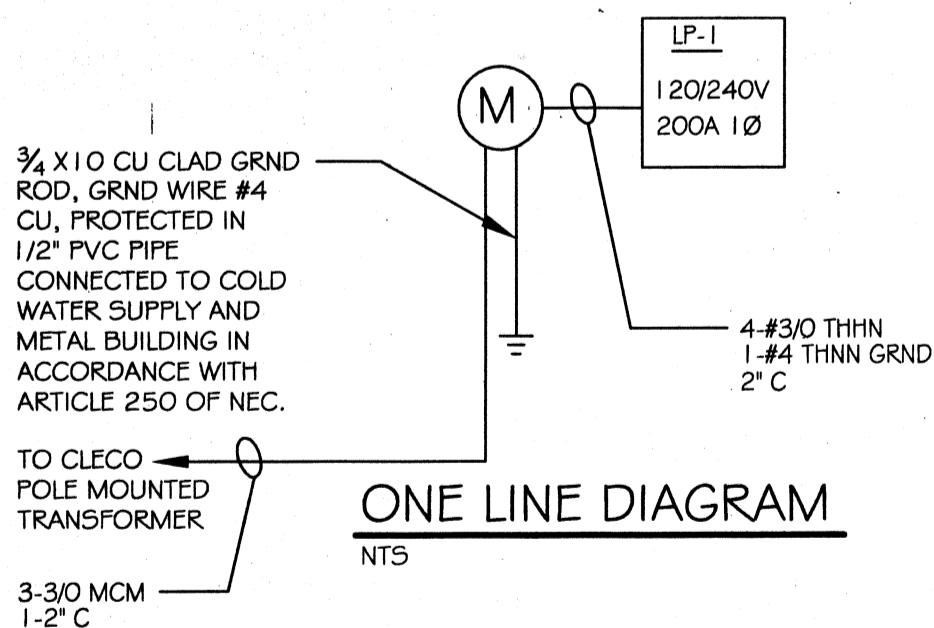
- ELECTRICAL NOTES**
- ALL WORK SHALL CONFORM TO THE LATEST EDITION OF THE NATIONAL ELECTRICAL CODE, THE GOVERNING ELECTRICAL CODE AND ALL OTHER INSPECTION DEPARTMENTS HAVING JURISDICTION. OBTAIN CERTIFICATES OR APPROVAL WHERE REQUIRED.
  - ALL MATERIALS FURNISHED SHALL BE NEW AND SHALL BE U.L. LISTED.
  - THE DRAWINGS INDICATE SIZE AND GENERAL LOCATION OF WORK. SCALE DIMENSIONS SHALL NOT BE USED. THE EXACT LOCATION AND LOCATION OF ALL LIGHTING FIXTURES, RECEPTACLES AND TELEPHONE OUTLETS, ETC. SHALL BE DETERMINED BY ACTUAL CONDITIONS IN THE FIELD.
  - BEFORE BEGINNING WORK, CONTRACTOR SHALL VISIT THE JOB SITE AND FAMILIARIZE THEMSELVES WITH THE EXISTING CONDITIONS. WORK MAY AFFECT THIS INSTALLATION.
  - ELECTRICAL CONTRACTOR SHALL COORDINATE INCOMING ELECTRICAL SERVICE WITH UTILITY COMPANY AND INCLUDE IN HIS BID ALL CHARGES AND FEES INCURRED IN MODIFICATIONS.
  - WHERE MORE THAN ONE SWITCH OCCURS IN THE SAME LOCATION, THEY SHALL BE INSTALLED IN A GANG TYPE BOX UNDER ONE COVER PLATE.
  - ELECTRICAL CONTRACTOR SHALL COORDINATE THE TELEPHONE INSTALLATION WITH THE TELEPHONE COMPANY AND THE GENERAL CONTRACTOR.
  - ELECTRICAL CONTRACTOR, BEFORE INSTALLING ANY OF THE WORK, SHALL SEE THAT IT DOES NOT INTERFERE WITH CLEARANCES REQUIRED FOR FINISH CEILINGS, PLASTER, PARTITIONS, WALLS, ETC. AS SHOWN IN THE ARCHITECTURAL DRAWINGS AND DETAILS. IF ANY WORK IS INSTALLED AND IT LATER DEVELOPS THAT SUCH DETAILS OR DESIGN CANNOT BE FOLLOWED, THE CONTRACTOR, AT HIS OWN EXPENSE, SHALL MAKE SUCH CHANGES IN THE WORK AS DIRECTED BY THE ARCHITECT, AS WELL AS TO PERMIT THE INSTALLATION OF THE ARCHITECTURAL WORK AS SHOWN ON THE PLANS AND DETAILS.
  - PERFORM TEST REQUIRED BY THE OWNER OR THE ENGINEER IN CONNECTION WITH THE OPERATION OF THE ELECTRICAL SYSTEM IN THE BUILDING.
  - ALL TESTS SHALL BE MADE IN ACCORDANCE WITH THE LATEST STANDARD OF THE IEEE AND THE NATIONAL ELECTRICAL CODE.
  - MINIMUM CONDUCTOR SIZE SHALL BE #12, 600V INSULATION. MINIMUM SIZE CONDUIT SHALL BE 3/4" EMT FOR INTERIOR USE AND 1 1/2" RIGID ALUMINUM FOR OUTDOOR USE. USE TYPE BMC COPPER, NON LIGHTS AND RECEPTACLE CIRCUITS. EXTERIOR FITTINGS SHALL BE CAST BRASS AND COVERS, INTERIOR FITTINGS SHALL BE CAST WHEAT BRASS OR WALL MOUNTED BOXES MAY BE USED ABOVE CEILING IN AIR CONDITIONED SPACES. WIRE LAY IN FIXTURES ARE IN USE, USE 1/4" ALLOWED FOR 6" WIDTH.
  - CONTRACTOR SHALL INSTALL WIRING AND OTHER CIRCUIT COMPONENTS TO MATCH EQUIPMENT ACTUALLY INSTALLED.
  - INSTALL GROUND FAULT RECEPTACLES AT RECEPTACLE LOCATIONS WITHIN 5' OF SINKS OR LAVATORIES, AND AT EXTERIOR LOCATIONS. EXTERIOR RECEPTACLES SHALL ALSO BE WEATHERPROOF.
  - BONDING AND GROUNDING SHALL BE IN ACCORDANCE WITH NFPA 70-230-63, NFPA 250-23, 250-71 & 250-72.
  - GROUND NEUTRAL IN ACCORDANCE WITH NFPA 70-250-230.
  - FUSES SHALL BE ITT CLASS KS, 250 VOLT, 250,000 AMP INTERRUPTING CAP.
  - PROVIDE SERVICE OF A FUSEBOX DETECTION AND ALARM COMPANY TO DESIGN AND INSTALL ALARM SYSTEM TO MEET REQUIREMENTS OF THE STATE FIRE MARSHAL.
  - EXTERIOR LIGHTING SHALL BE SHADDED OR DIMMED IN SUCH A MANNER SO THAT NO DIRECT LIGHTING OR GLOW IS CAST BEYOND THE PROPERTY LINE. THE INTENSITY OF SUCH LIGHTING SHALL NOT EXCEED ONE FOOT CANDLE AS MEASURED AT THE ADJUTING PROPERTY LINE.
  - ALL ELECTRICAL, MECHANICAL AND PLUMBING PENETRATING FIRE PARTITIONS SHALL BE FIRE CALKED. (PENETRATIONS THROUGH MASONRY CONSTRUCTION SHALL BE SEALED WITH A MATERIAL CAPABLE OF PREVENTING THE PASSAGE OF FLAMES AND HOT GASES WHEN TESTED IN ACCORDANCE WITH ASTM-6514.)



**POWER PLAN**  
SCALE: 3/16"=1'



**LIGHTING PLAN**  
SCALE: 3/16"=1'



PANEL: LP-1  
LOCATION: WEST WALL OF SHOW ROOM AREA  
FEEDER SOURCE: CLECO

VOLTAGE: 120/240V, 200A 1Ø, 3W, MID  
ENCLOSURE: FLUSH MOUNTED EQUIPMENT GND BAR  
150A MID  
SQUARE D TYPE QO LOAD CENTER

CIR. NO.	TYPE	LOAD DESCRIPTION	AMP	POLE	LOAD (VA)	LOAD (W)	LOAD (VA)	LOAD (W)	LOAD (VA)	LOAD (W)	LOAD (VA)	LOAD (W)
1	AC	ASU #1 15 KW	60	2	5000	5000	4000	2	40	AC COMPRESSOR #1 2 TON	40	2
2	AC	ASU #2 15 KW	60	2	5000	5000	4000	2	40	AC COMPRESSOR #2 2 TON	40	2
3	AC	ASU #3 15 KW	60	2	5000	5000	4000	2	40	AC COMPRESSOR #3 2 TON	40	2
4	AC	ASU #4 15 KW	60	2	5000	5000	4000	2	40	AC COMPRESSOR #4 2 TON	40	2
5	AC	ASU #5 15 KW	60	2	5000	5000	4000	2	40	AC COMPRESSOR #5 2 TON	40	2
6	AC	ASU #6 15 KW	60	2	5000	5000	4000	2	40	AC COMPRESSOR #6 2 TON	40	2
7	AC	ASU #7 15 KW	60	2	5000	5000	4000	2	40	AC COMPRESSOR #7 2 TON	40	2
8	AC	ASU #8 15 KW	60	2	5000	5000	4000	2	40	AC COMPRESSOR #8 2 TON	40	2
9	AC	ASU #9 15 KW	60	2	5000	5000	4000	2	40	AC COMPRESSOR #9 2 TON	40	2
10	AC	ASU #10 15 KW	60	2	5000	5000	4000	2	40	AC COMPRESSOR #10 2 TON	40	2
11	AC	ASU #11 15 KW	60	2	5000	5000	4000	2	40	AC COMPRESSOR #11 2 TON	40	2
12	AC	ASU #12 15 KW	60	2	5000	5000	4000	2	40	AC COMPRESSOR #12 2 TON	40	2
13	AC	ASU #13 15 KW	60	2	5000	5000	4000	2	40	AC COMPRESSOR #13 2 TON	40	2
14	AC	ASU #14 15 KW	60	2	5000	5000	4000	2	40	AC COMPRESSOR #14 2 TON	40	2
15	AC	ASU #15 15 KW	60	2	5000	5000	4000	2	40	AC COMPRESSOR #15 2 TON	40	2
16	AC	ASU #16 15 KW	60	2	5000	5000	4000	2	40	AC COMPRESSOR #16 2 TON	40	2
17	AC	ASU #17 15 KW	60	2	5000	5000	4000	2	40	AC COMPRESSOR #17 2 TON	40	2
18	AC	ASU #18 15 KW	60	2	5000	5000	4000	2	40	AC COMPRESSOR #18 2 TON	40	2
19	AC	ASU #19 15 KW	60	2	5000	5000	4000	2	40	AC COMPRESSOR #19 2 TON	40	2
20	AC	ASU #20 15 KW	60	2	5000	5000	4000	2	40	AC COMPRESSOR #20 2 TON	40	2
21	AC	ASU #21 15 KW	60	2	5000	5000	4000	2	40	AC COMPRESSOR #21 2 TON	40	2
22	AC	ASU #22 15 KW	60	2	5000	5000	4000	2	40	AC COMPRESSOR #22 2 TON	40	2
23	AC	ASU #23 15 KW	60	2	5000	5000	4000	2	40	AC COMPRESSOR #23 2 TON	40	2
24	AC	ASU #24 15 KW	60	2	5000	5000	4000	2	40	AC COMPRESSOR #24 2 TON	40	2
25	AC	ASU #25 15 KW	60	2	5000	5000	4000	2	40	AC COMPRESSOR #25 2 TON	40	2
26	AC	ASU #26 15 KW	60	2	5000	5000	4000	2	40	AC COMPRESSOR #26 2 TON	40	2
27	AC	ASU #27 15 KW	60	2	5000	5000	4000	2	40	AC COMPRESSOR #27 2 TON	40	2
28	AC	ASU #28 15 KW	60	2	5000	5000	4000	2	40	AC COMPRESSOR #28 2 TON	40	2
29	AC	ASU #29 15 KW	60	2	5000	5000	4000	2	40	AC COMPRESSOR #29 2 TON	40	2
30	AC	ASU #30 15 KW	60	2	5000	5000	4000	2	40	AC COMPRESSOR #30 2 TON	40	2
31	AC	ASU #31 15 KW	60	2	5000	5000	4000	2	40	AC COMPRESSOR #31 2 TON	40	2
32	AC	ASU #32 15 KW	60	2	5000	5000	4000	2	40	AC COMPRESSOR #32 2 TON	40	2
33	AC	ASU #33 15 KW	60	2	5000	5000	4000	2	40	AC COMPRESSOR #33 2 TON	40	2
34	AC	ASU #34 15 KW	60	2	5000	5000	4000	2	40	AC COMPRESSOR #34 2 TON	40	2
35	AC	ASU #35 15 KW	60	2	5000	5000	4000	2	40	AC COMPRESSOR #35 2 TON	40	2
36	AC	ASU #36 15 KW	60	2	5000	5000	4000	2	40	AC COMPRESSOR #36 2 TON	40	2
37	AC	ASU #37 15 KW	60	2	5000	5000	4000	2	40	AC COMPRESSOR #37 2 TON	40	2
38	AC	ASU #38 15 KW	60	2	5000	5000	4000	2	40	AC COMPRESSOR #38 2 TON	40	2
39	AC	ASU #39 15 KW	60	2	5000	5000	4000	2	40	AC COMPRESSOR #39 2 TON	40	2
40	AC	ASU #40 15 KW	60	2	5000	5000	4000	2	40	AC COMPRESSOR #40 2 TON	40	2
41	AC	ASU #41 15 KW	60	2	5000	5000	4000	2	40	AC COMPRESSOR #41 2 TON	40	2
42	AC	ASU #42 15 KW	60	2	5000	5000	4000	2	40	AC COMPRESSOR #42 2 TON	40	2

**CLECO Power LLC - Electrical Load Summary**

Project Name: MOREAUS THERMAL SERVICES INC.  
Project Address: 200 JOSEPH STREET  
City / Town: SUDELL, Louisiana

Intended Use: Office/Warehouse Building  
Requested Service: 240 Volts 1 Ø Phase 3 Wires  
Service Entrance Size: 200 Amps  
HVAC Tonnage: 10.00 Tons  
Largest Motor: N/A HP (Note: Motors above 20 hp may require reduced voltage starting and are never recommended for use with 120/240V, 3 Ø, 4W services.)

Total Building Square Footage: 3,800 Square Feet  
Individual Unit Square Footage: N/A Square Feet (Multiple Occupancy)  
Individual Unit Designation: N/A (Multiple Occupancy)

LOAD SOURCE	1Ø - kVA	3Ø - kVA	or	1Ø - kW	3Ø - kW
Building Lighting	9160	-	or	-	-
Electric Water Heating	7200	-	or	-	-
Heat Pumps	-	-	or	-	-
Supplemental Heat System	-	-	or	-	-
Air Conditioning Condensing Units	19200	-	or	-	-
Electrical Heating (Primary) - AHUs	20000	-	or	-	-
Cooking	-	-	or	-	-
Refrigeration	160	-	or	-	-
Receptacles (Standard)	4320	-	or	-	-
Receptacles (Computer)	-	-	or	-	-
Total Motors (Exclude HVAC)	-	-	or	-	-
Exterior Lighting	600	-	or	-	-
Miscellaneous - Ceiling Fans	-	-	or	-	-
Other (Specify)	-	-	or	-	-

423682  
REVIEWED FOR  
STATE FIRE MARSHAL  
AS PER REVIEW LETTER  
BY: WILLIAM D. JONES, ARCHITECT, CBO  
*William D. Jones*

**DAMMON ENGINEERING**  
Architects & Engineers

RAY HORVATH FLOORWORKS AND BLINDS  
RETAIL  
1860 SHORTLIT ROAD  
SUDELL, LA 70459

CHIEF ENGINEER: EMMETT DAMMON, P.E.  
CHIEF ARCHITECT: ROBERT WILDE  
554 OLD SPANISH TRAIL  
SUDELL, LA 70456

DATE: 10-23-12  
CHECKED BY: BSN  
JOB NO: 2152  
DRAWN BY: BSN

REVISIONS

#	DESCRIPTION	DATE

POWER & LIGHTING PLAN

SHEET No: 08 OF 9

E-1