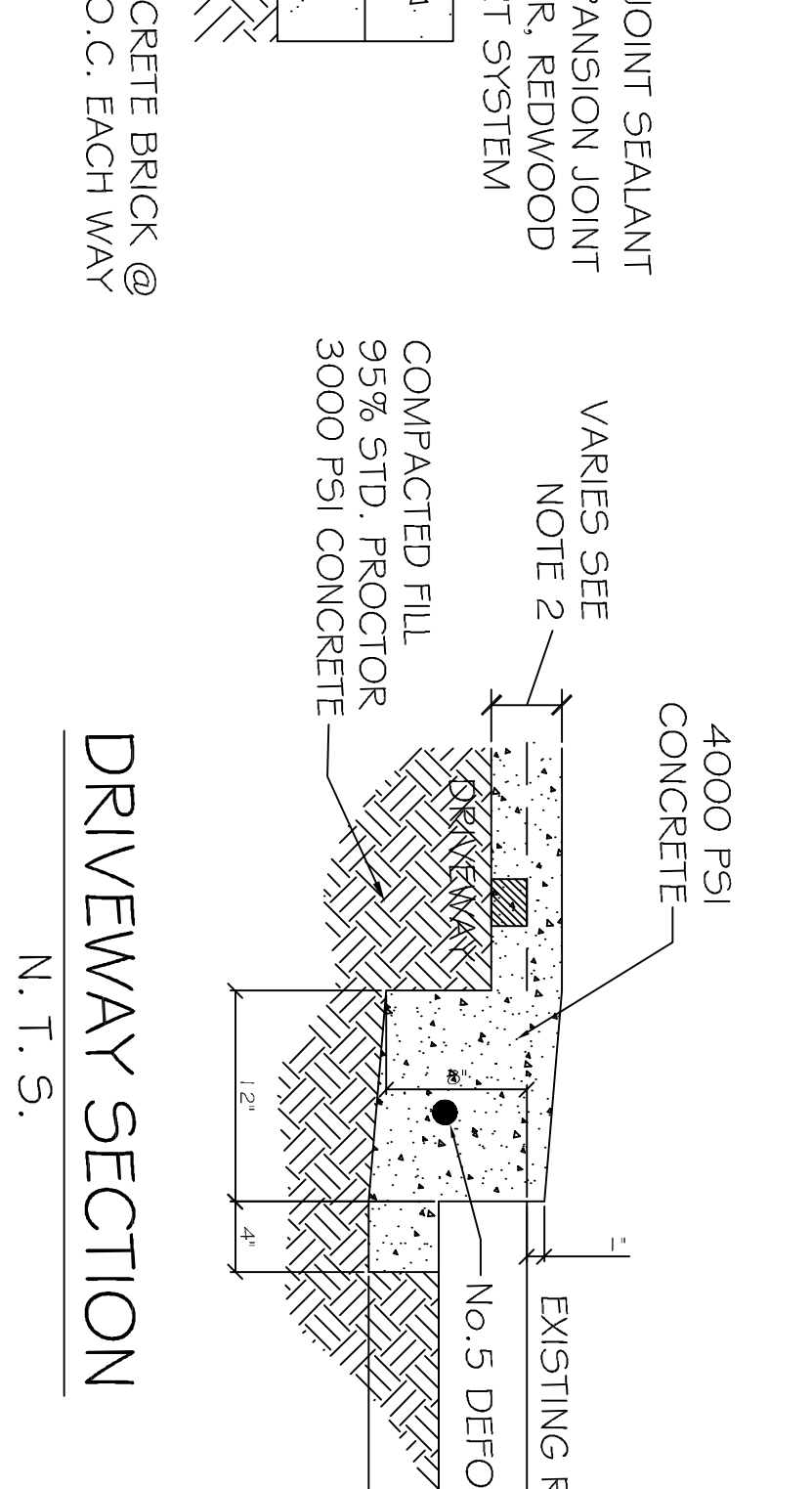
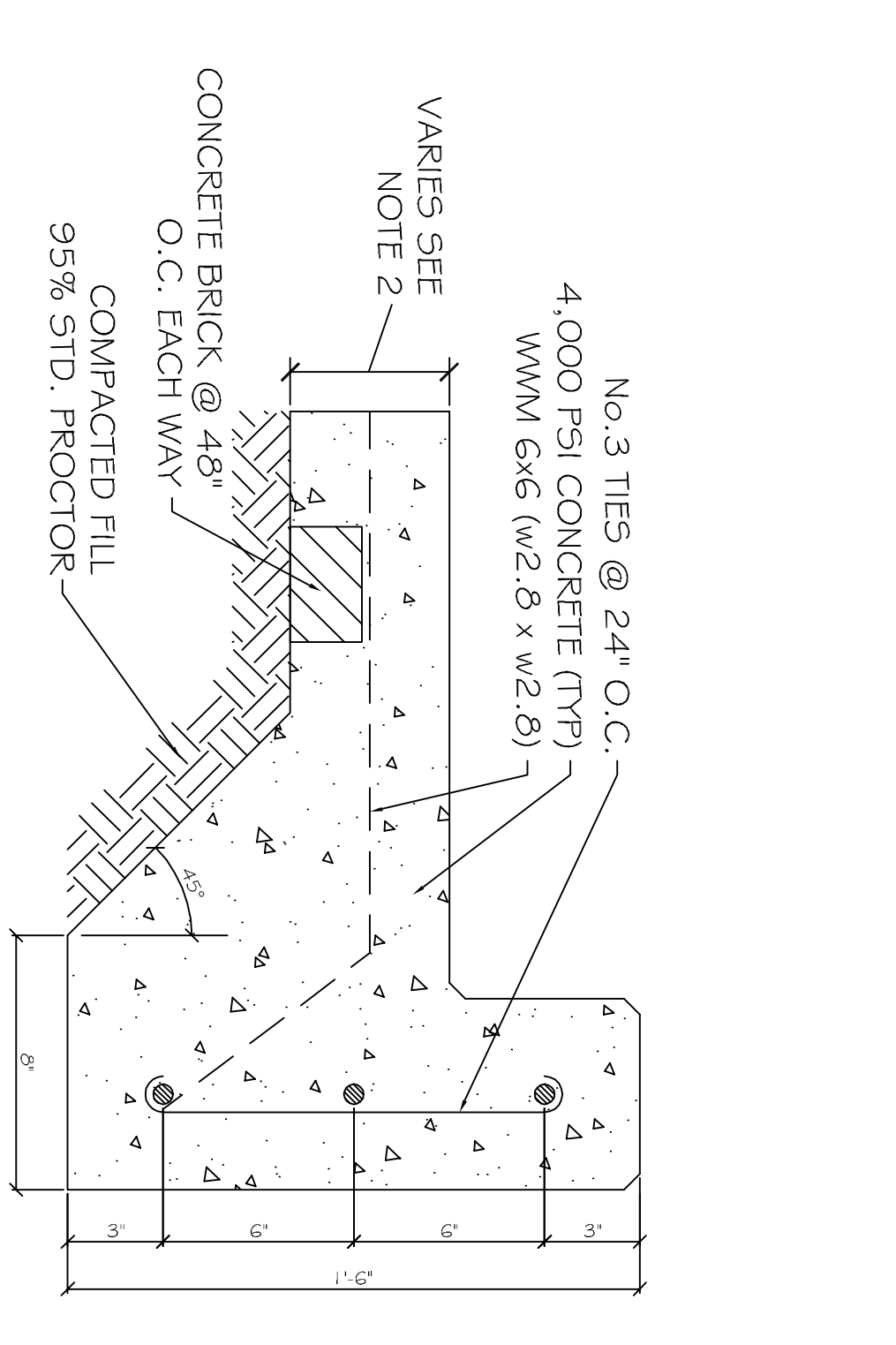
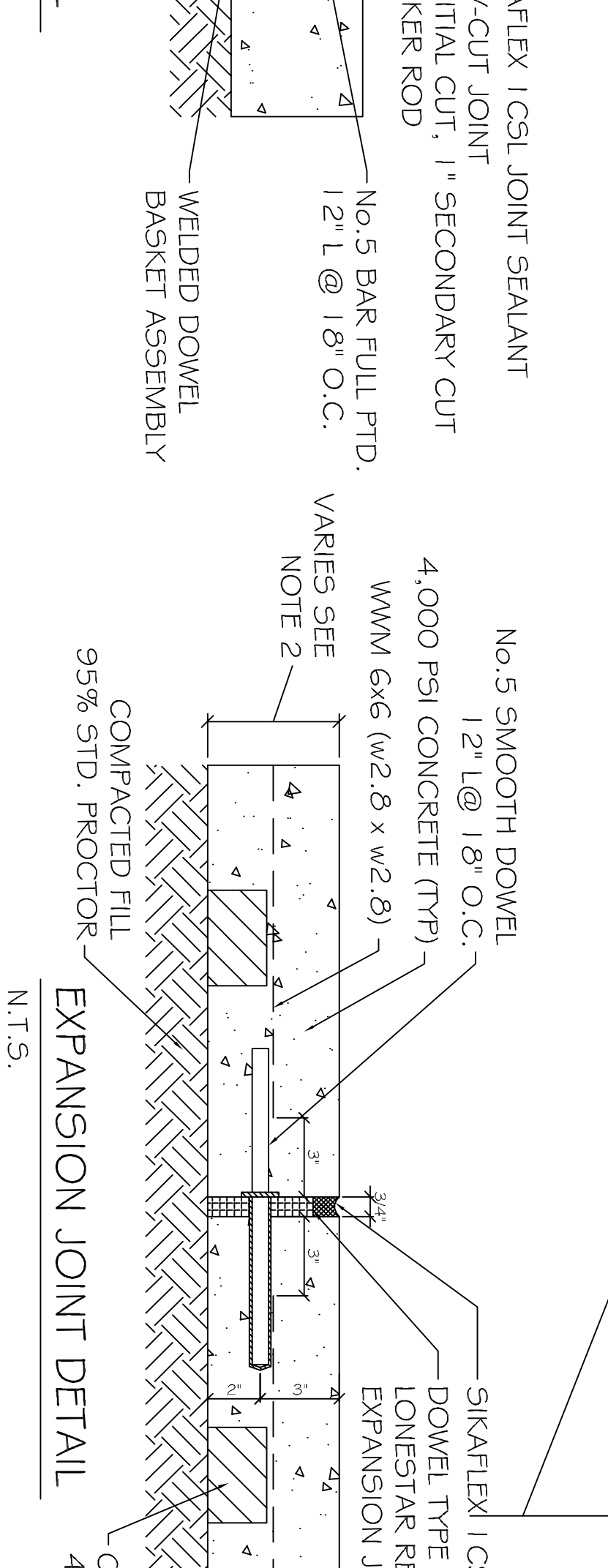
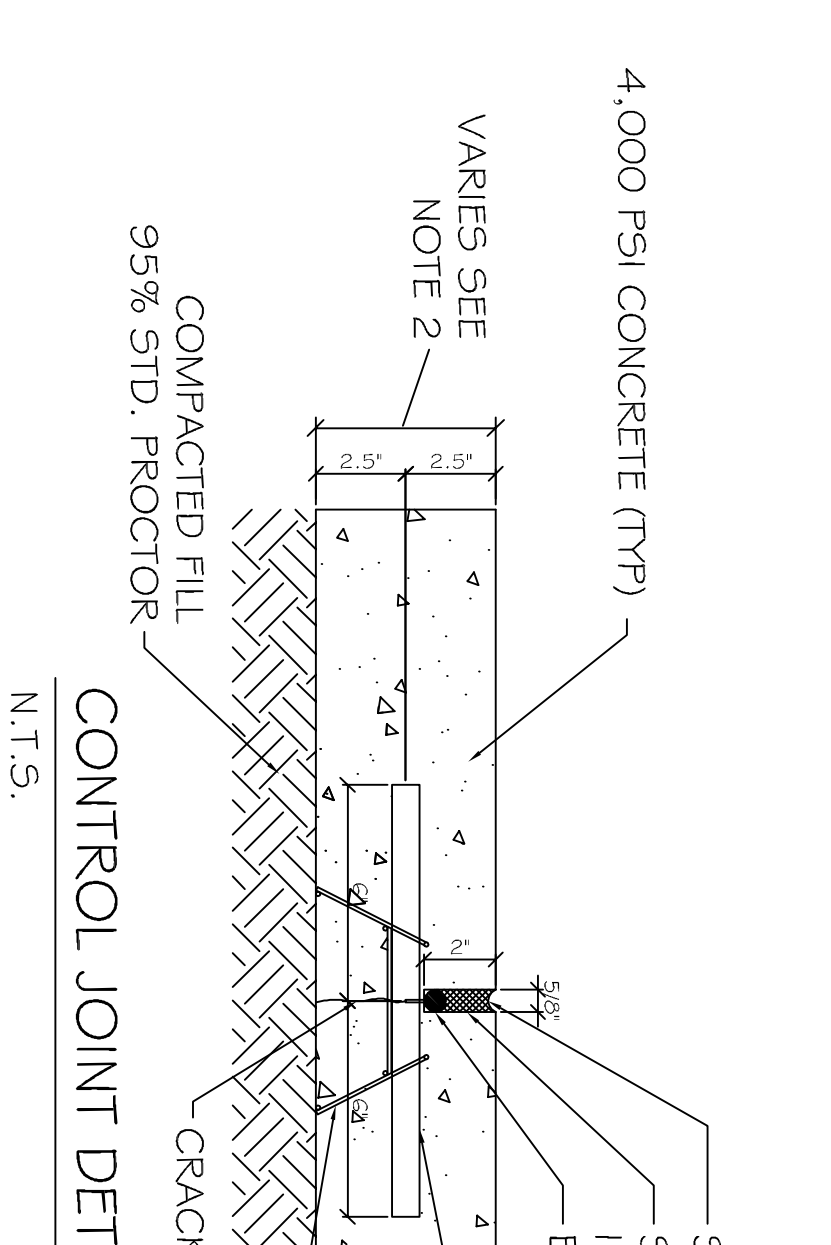
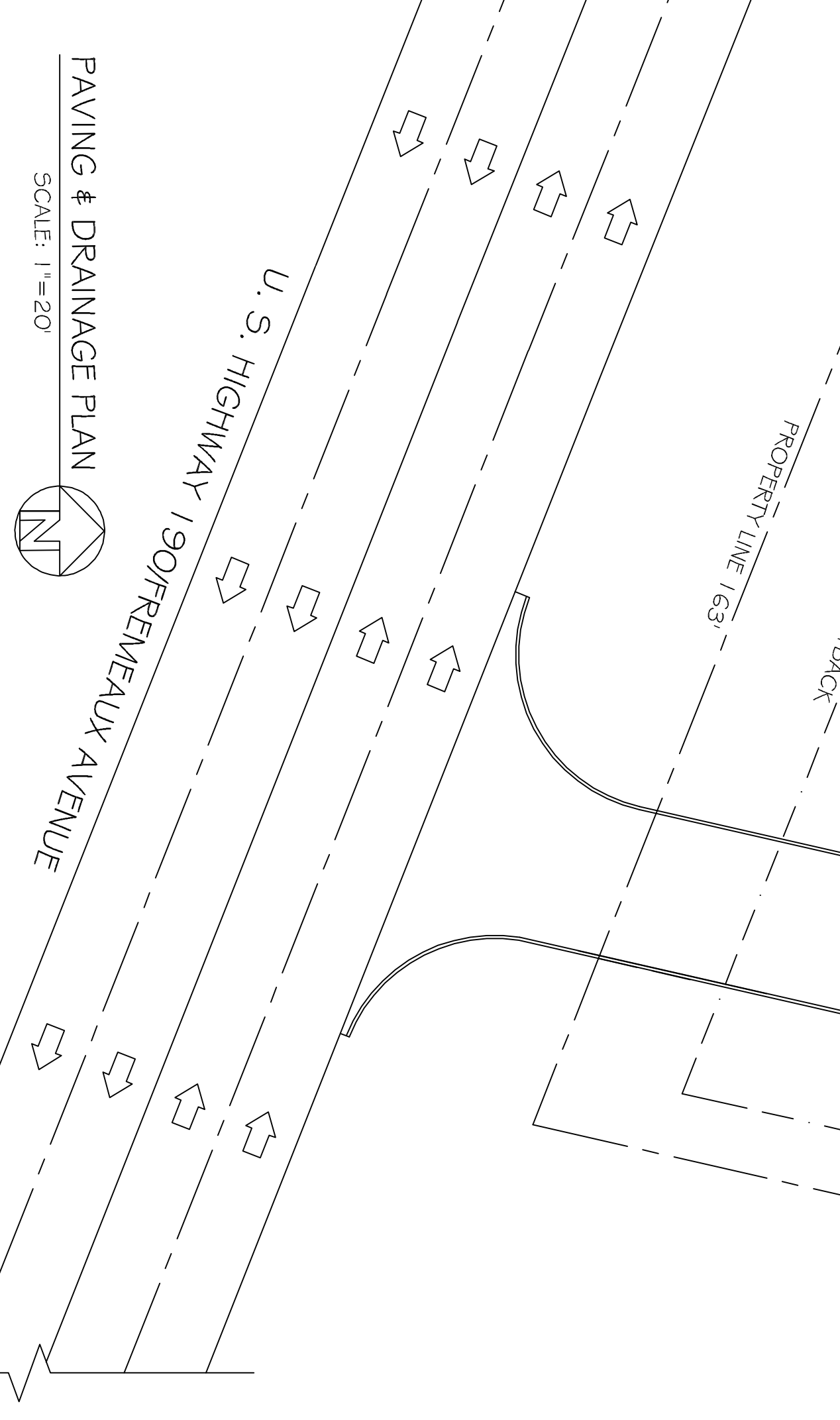
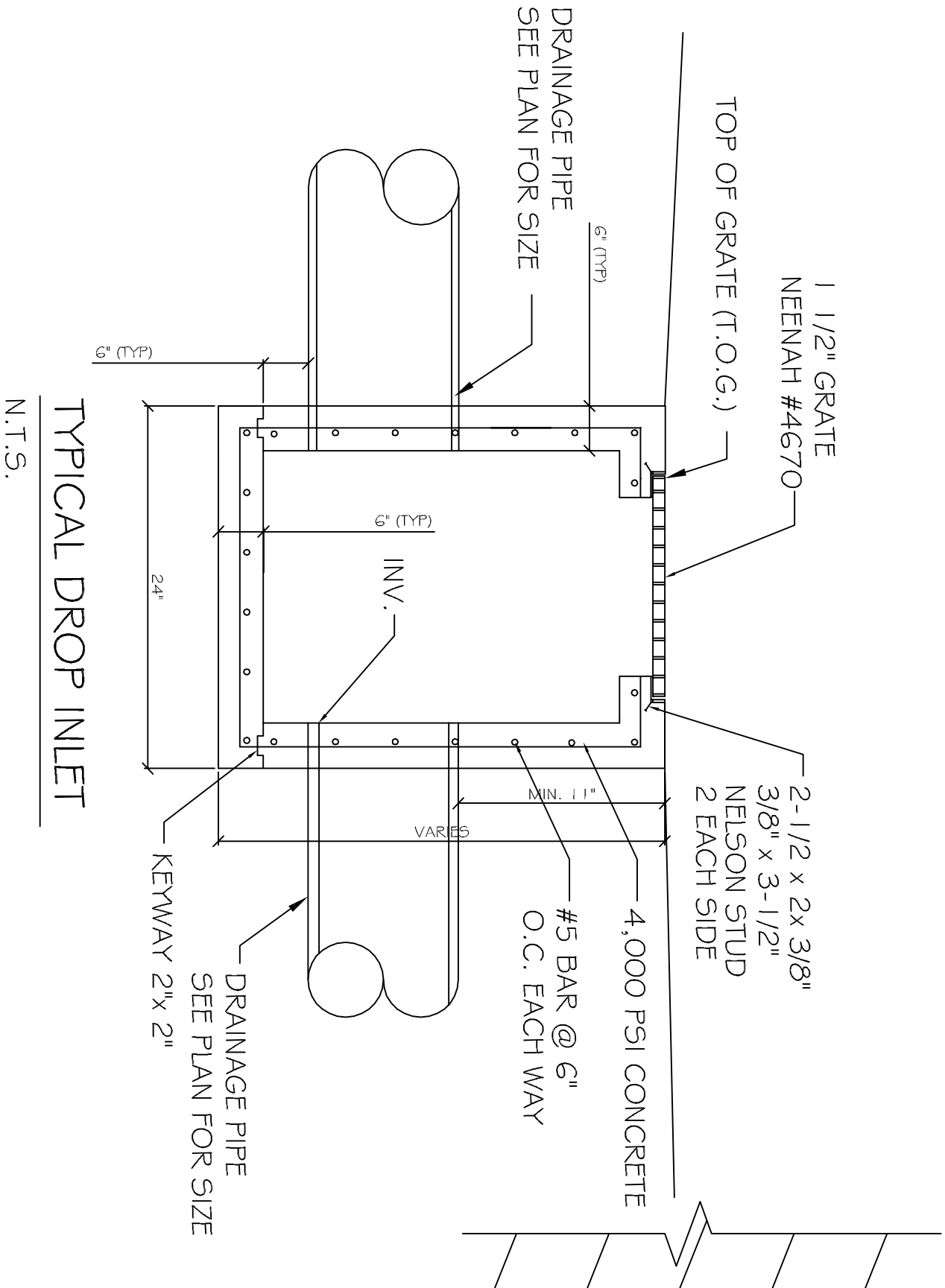


PAVING NOTES:

- 1) ALL NEW CONCRETE SHALL HAVE A MINIMUM COMPRESSIVE STRENGTH OF 4,000 PSI AT 28 DAYS AND A MINIMUM THICKNESS OF 5". CONCRETE MIX SHALL BE IN ACCORDANCE WITH THE LATEST REVISION OF ASTM C-150 TYPE 1.
- 2) CONCRETE PAVING THICKNESS SHALL VARY AS FOLLOWS:
 - a) APRONS = 7" THICKNESS
 - b) DRIVELANES = 6" THICKNESS
 - c) PARKING AREAS = 5" THICKNESS
 - d) ALL REINFORCING STEEL SHALL MEET ASTM-A615 (GRADE 60).
 - e) ALL REINFORCING STEEL SHALL BE SECURELY SUPPORTED TO PREVENT BOTH VERTICAL AND HORIZONTAL MOVEMENT DURING CONCRETE PLACEMENT. ALL CONTROL AND EXPANSION JOINTS SHALL BE LOCATED AND INSTALLED AS SHOWN ON THE PAVING PLAN AND IN ACCORDANCE WITH THE MANUFACTURERS RECOMMENDATIONS.
 - f) ALL SUB GRADE FILL SHALL BE SELECT GRANULAR MATERIAL COMPACTED TO 95% STANDARD PROCTOR DENSITY IN A MAXIMUM OF 6" LIFTS.
 - g) CONTRACTOR SHALL CONTACT THEIR REGULATORY DEPARTMENT OF ENGINEERING PRIOR TO CONDUCTING ANY WORK.
 - h) ANY WORK WITHIN THE ROADWAY OR ADJACENT TO THE ROADWAY CAUSING AN INTERFERENCE TO VEHICULAR TRAFFIC REQUIRES PRIOR APPROVAL FROM THE CITY TRAFFIC ENGINEERING DIVISION, AND MUST CONFORM TO THE REQUIREMENTS SET FORTH BY THE UNIFORM MANUAL OF TRAFFIC CONTROL DEVICES OF THE STATE OF LOUISIANA. THE CONTRACTOR MUST FURNISH ALL NECESSARY TRAFFIC SIGNS AND/OR BARRICADES AND MAINTAIN THEM DURING CONSTRUCTION ACTIVITY.



- LEGEND**
- PROPERTY LINE
 - SETBACK LINE
 - BUFFER ZONE LINE
 - UTIL. EASEMENT LINE
 - CONTROL JT. 10x15'
 - EXPANSION JT. 30x45'
 - SHEET FLOW ARROW
 - INVERT ELEVATION
 - # 0.00 - TOP OF GRATE ELEVATION
 - 00.00 - NEW ELEVATION

REVISIONS	
#	DESCRIPTION

RAY HORVATH FLOORWORKS AND BLINDS
 RETAIL
 13650 SHORTCUT ROAD
 SLIDELL, LA 70458

JOB No: 2152 DATE: 10-23-12
 DRAWN BY: BSN CHECKED BY: BSN

The above drawings and specifications, designs and arrangements represent the property of Dammon Engineering, Inc. and shall remain the property of Dammon Engineering, Inc. and no part thereof shall be copied, reproduced, or used in connection with any work or project other than the specific project for which they have been prepared and distributed without written consent of Dammon Engineering, Inc. All contact with these drawings or specifications shall constitute a contract and no oral or written agreement shall be binding without the written consent of Dammon Engineering, Inc.

DAMMON ENGINEERING, INC.
 Architects & Engineers

CHIEF ENGINEER, EMMETT DAMMON, P.E.
 CHIEF ARCHITECT, ROBERT WILTSE
 554 OLD SPANISH TRAIL
 SLIDELL, LA 70458

dammonengneenna.com
 dammoneng@bellsouth.net
 PHONE: 985-649-5832
 FAX: 985-641-5950