

IBC 2012 SUMMARY

OCCUPANCY CLASSIFICATION:
 BUSINESS, GROUP B (SEC 304.1)
 WAREHOUSE STORAGE, GROUP S-1 (SEC 311.2)

OCCUPANT LOAD: (TBL 1004.1.1)
 BUSINESS AREAS = 100 GROSS SQ.FT. / OCCUPANT
 WAREHOUSE AREAS = 500 GROSS SQ. FT. / OCCUPANT
 2412 S.F. OFFICE = 24.12 OCCUPANTS
 1281 S.F. WAREHOUSE = 14.56 OCCUPANTS
 4642 S.F. GROSS BUILDING
 TOTAL 38.68 OCCUPANTS

EXIT ACCESS REQUIREMENTS: (SEC 1015)
 1 EXIT REQUIRED FOR < 44 OCCUPANTS IN BUSINESS OCCUPANCY (2 EXITS PROVIDED)
 1 EXIT REQUIRED FOR < 24 OCCUPANTS IN STORAGE OCCUPANCY (2 EXITS (EXISTING))

EXIT TRAVEL DISTANCE REQUIREMENTS: (SEC 1016)
 BUSINESS EXIT ACCESS TRAVEL DISTANCE = 200' UNSPRINKLED
 WAREHOUSE EXIT ACCESS TRAVEL DISTANCE = 200' UNSPRINKLED

ALLOWABLE HEIGHT AND BLDG. AREA: (TBL 503)
 B=23,000 SQ.FT. / 3 STORY ALLOWED, THIS PROJECT 1 STORY / 4,642 SQ.FT.

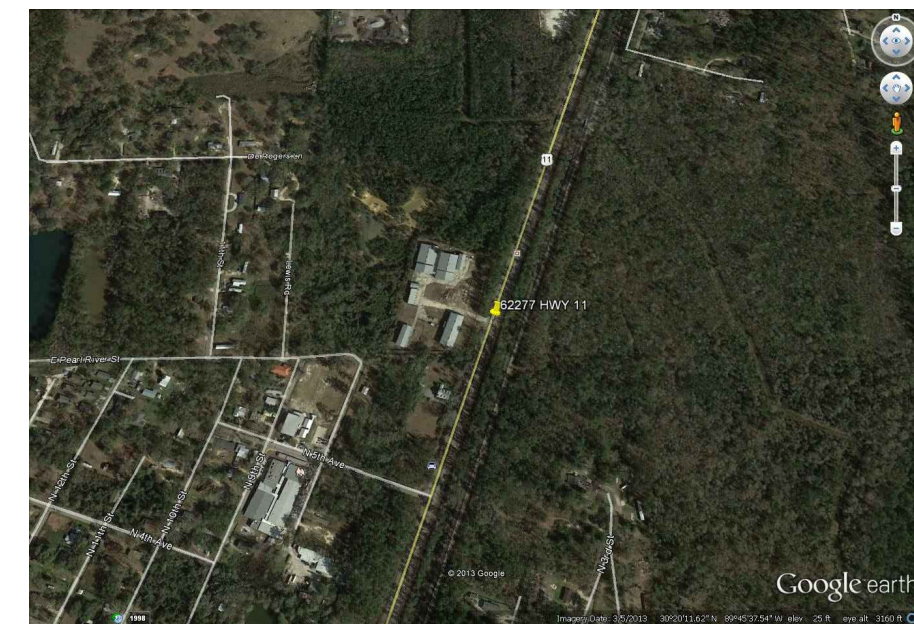
CONSTRUCTION CLASSIFICATION: (SEC 602.2)
 TYPE II B

FIRE RESISTANCE RATING REQUIREMENTS FOR BLDG. ELEMENTS: (TBL 601)
 STRUCTURAL FRAME= 0 HRS.
 BEARING WALLS (INTERIOR AND EXTERIOR)= 0 HRS.
 NON-BEARING WALLS= 0 HRS.
 FLOOR CONSTRUCTION= 0 HRS.
 ROOF CONSTRUCTION= 0 HRS.

FIRE ALARM SYSTEM REQUIREMENTS: (SEC 907)
 THIS BLDG. DOES NOT REQUIRE A FIRE ALARM SYSTEM

FIRE PROTECTION SYSTEM REQUIREMENTS: (SEC 903)
 THIS BLDG. DOES NOT REQUIRE A FIRE PROTECTION SYSTEM IN ACCORDANCE WITH SEC 903.2.B

CONSTRUCTION DOCUMENTS: (SEC 1603)
 THIS BLDG. SHALL BE DESIGNED IN ACCORDANCE WITH IBC SECTION 1609 AS A FULLY ENCLOSED BLDG. USING THE FOLLOWING INFORMATION:
 WIND DESIGN DATA:
 DETERMINATION OF WIND LOADS SHALL BE IN ACCORDANCE WITH IBC SEC 1609.4
 BASIC WIND SPEED (3 SECOND GUSTS) = 130 MPH (FIG 1609)
 IMPORTANCE FACTOR: CATEGORY II BLDG., I=1.00, II=1.00, III=1.00 (TBL 1609.5)
 EXPOSURE B
 DESIGN WIND PRESSURE (ASCE 7-05 FIG. 6-2): 33.6 PSF
 INTERNAL PRESSURE COEFFICIENT (ASCE 7-05 FIG. 6-5): ± 0.18
 LIVE LOADS: (SEC 1607)
 LOBBIES AND 1st FLR. CORRIDOR (TBL 1607.1): 100 PSF
 OFFICE (TBL 1607.1): 50 PSF
 ROOF LIVE LOAD (TBL 1607.1) = 20 PSF UNIFORM, 300 LB. CONCENTRATED
 GROUND SNOW LOAD (FIG. 1609.2) = 5 PSF



AREA OF WORK
 VICINITY MAP
 N.T.S.

NFPA 101 2012 SUMMARY

BUILDING AREA:
 TOTAL BUILDING AREA = 9,642 SQ.FT.

OCCUPANCY CLASSIFICATION:
 BUSINESS, GROUP B
 WAREHOUSE STORAGE, LOW HAZARD

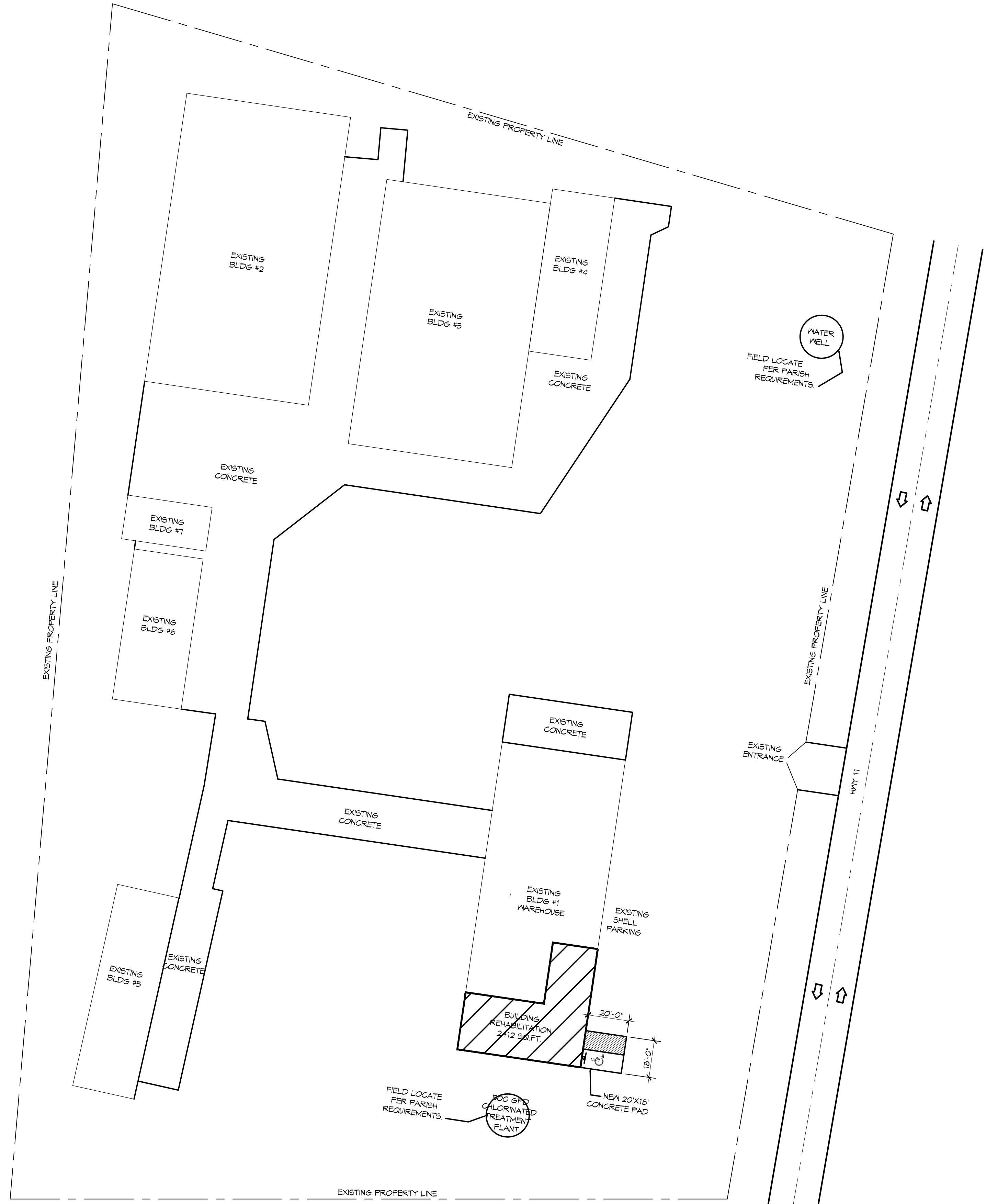
OCCUPANT LOAD: (TBL 1.3.1.2)
 BUSINESS = 100 GROSS SQ.FT. / OCCUPANT = 2,412 / 100 = 25 OCCUPANTS
 WAREHOUSE = 500 GROSS SQ.FT. / OCCUPANT = 1281/500 = 15 OCCUPANTS
 TOTAL 34 OCCUPANTS

SPRINKLER SYSTEM: (SEC 903.2.5)
 THIS BUILDING SHALL NOT BE REQUIRED TO HAVE AN AUTOMATIC SPRINKLER SYSTEM AT THIS TIME.

FIRE ALARM SYSTEM: (SEC 903.4.1)
 A FIRE ALARM SYSTEM IS NOT REQUIRED.

EXIT ACCESS:
 1 EXITS REQUIRED (SEC 903.2.4.3)
 2 EXITS PROVIDED
 ALLOWABLE EXIT ACCESS TRAVEL DISTANCE = 200' (SEC 903.2.6.2)
 LONGEST EGRESS PATH IN AREA OF WORK = 48'-7"

INDEX OF DRAWINGS			
SHT#	DWG#	DRAWING NAME	REVISED
1	C-1	INDEX / SITE PLAN	
2	A-1	FLOOR PLAN	
3	A-2	REFLECTED CEILING PLAN	
4	P/M-1	PLUMBING & MECHANICAL PLAN	
5	E-1	POWER AND LIGHTING PLAN	



1 SITE PLAN
 SCALE: 1" = 32'

DAMMON ENGINEERING, INC.
 Architects & Engineers
 www.dammonengineering.com
 554 Old Spanish Trail
 Slidell, LA 70458
 Ph: 985.649.5832
 Fax: 985.641.5990

#	DESCRIPTION	DATE

SEAL:

 2/16/2014

NEW OFFICES:
STAN ELMORE
 6277 HWY 11
 SLIDELL, LOUISIANA
 JOB No: 2195
 DATE: 01-14-2014
 DRAWN BY: CJK
 CHECKED BY: CJK

SHEET TITLE:
 INDEX / SITE PLAN

DRAWING NUMBER:
C1

SHEET No: C1 of 05