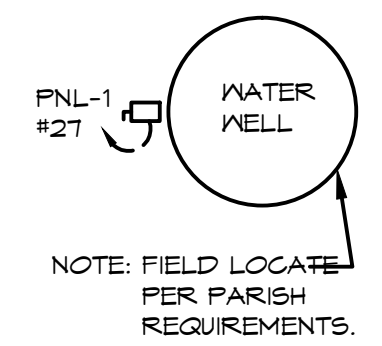
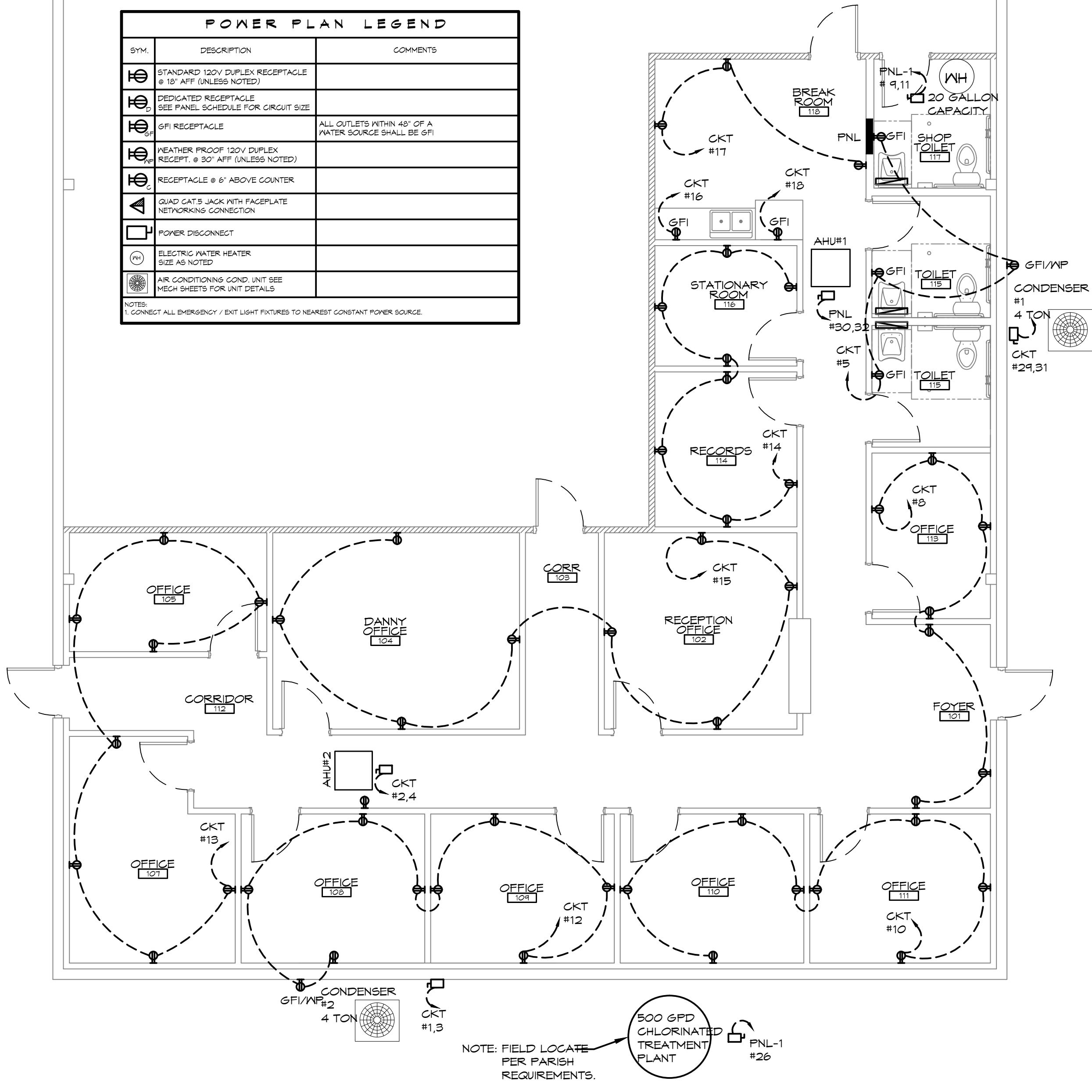


- ELECTRICAL NOTES**
- ALL WORK SHALL CONFORM TO THE LATEST EDITION OF THE NATIONAL ELECTRICAL CODE, THE GOVERNING ELECTRICAL CODE AND ALL OTHER INSPECTION DEPARTMENTS HAVING JURISDICTION. OBTAIN CERTIFICATES OR APPROVAL WHERE REQUIRED.
 - ALL MATERIALS FURNISHED SHALL BE NEW AND SHALL BE U.L. LISTED.
 - THE DRAWINGS INDICATE SIZE AND GENERAL LOCATION OF WORK. SCALE DIMENSIONS SHALL NOT BE USED. THE EXACT LOCATION AND LOCATION OF ALL LIGHTING FIXTURES, RECEPTACLES AND TELEPHONE OUTLETS, ETC. SHALL BE DETERMINED BY ACTUAL CONDITIONS IN THE FIELD.
 - PRIOR TO BIDDING, CONTRACTOR SHALL VISIT THE JOB SITE AND FAMILIARIZE THEMSELVES WITH THE EXISTING CONDITIONS.
 - ELECTRICAL CONTRACTOR SHALL COORDINATE HIS WORK WITH OTHER TRADES AND WITH OTHER CONTRACTORS WHOSE WORK MAY AFFECT THIS INSTALLATION.
 - ELECTRICAL CONTRACTOR SHALL COORDINATE INCOMING ELECTRICAL SERVICE WITH UTILITY COMPANY AND INCLUDE IN HIS BID ALL CHARGES AND FEES INCURRED IN MODIFICATIONS.
 - WHERE MORE THAN ONE SWITCH OCCURS IN THE SAME LOCATION, THEY SHALL BE INSTALLED IN A GANG TYPE BOX UNDER ONE COVER PLATE.
 - ELECTRICAL CONTRACTOR SHALL COORDINATE THE TELEPHONE INSTALLATION WITH THE TELEPHONE COMPANY AND THE GENERAL CONTRACTOR.
 - ELECTRICAL CONTRACTOR, BEFORE INSTALLING ANY OF THE WORK, SHALL SEE THAT IT DOES NOT INTERFERE WITH CLEARANCES REQUIRED FOR FINISHED COLUMNS, HUNG CEILINGS, PLASTER, PARTITIONS, WALLS, ETC. AS SHOWN IN THE ARCHITECTURAL DRAWINGS AND DETAILS. IF ANY WORK IS INSTALLED AND IT LATER DEVELOPS THAT SUCH DETAILS OR DESIGN CANNOT BE FOLLOWED, THE CONTRACTOR, AT HIS OWN EXPENSE, SHALL MAKE SUCH CHANGES IN THE WORK AS DIRECTED BY THE ARCHITECT, AS WELL AS TO PERMIT THE INSTALLATION OF THE ARCHITECTURAL WORK AS SHOWN ON THE PLANS AND DETAILS.
 - PERFORM TEST REQUIRED BY THE OWNER OR THE ENGINEER IN CONNECTION WITH THE OPERATION OF THE ELECTRICAL SYSTEM IN THE BUILDING.
 - ALL TESTS SHALL BE MADE IN ACCORDANCE WITH THE LATEST STANDARD OF THE IEEE AND THE NATIONAL ELECTRICAL CODE.
 - MINIMUM CONDUCTOR SIZE SHALL BE #12, 600V INSULATION. MINIMUM SIZE CONDUIT SHALL BE 3/4" EMT FOR INTERIOR USE AND 3/4" RIGID ALUMINUM FOR EXTERIOR USE. USE TYPE NMC CABLE COPPER, FOR LIGHTS AND RECEPTACLE CIRCUITS. EXTERIOR FITTINGS SHALL BE CAST BOXES AND COVERS. INTERIOR FITTINGS SHALL BE CAST WHERE EXPOSED ON WALLS. STAMPED BOXES MAY BE USED ABOVE CEILINGS IN AIR CONDITIONED SPACES, WHERE LAY IN FIXTURES ARE IN USE, USE 14/2 ALLOWED FOR 6' WIDTH.
 - CONTRACTOR SHALL INSTALL WIRING AND OTHER CIRCUIT COMPONENTS TO MATCH EQUIPMENT ACTUALLY INSTALLED.
 - INSTALL GROUND FAULT RECEPTACLES AT RECEPTACLE LOCATIONS WITHIN 5' OF SINKS OR LAVATORIES, AND AT EXTERIOR LOCATIONS. EXTERIOR RECEPTACLES SHALL ALSO BE WATERPROOF.
 - BONDING AND GROUNDING SHALL BE IN ACCORDANCE WITH NFPA 70:250-63, NFPA 250-23, 250-11 & 250-12.
 - GROUND NEUTRAL IN ACCORDANCE WITH NFPA 70:250-23b.
 - FUSES SHALL BE ITT CLASS K5, 250 VOLT, 200,000 AMP INTERRUPTING CAP.
 - PROVIDE SERVICES OF A FIRE/SMOKE DETECTION AND ALARM COMPANY TO DESIGN AND INSTALL ALARM SYSTEM TO MEET REQUIREMENTS OF THE STATE FIRE MARSHALL.
 - EXTERIOR LIGHTING SHALL BE SHADED OR INWARDLY DIRECTED IN SUCH A MANNER SO THAT NO DIRECT LIGHTING OR GLARE IS CAST BEYOND THE PROPERTY LINE. THE INTENSITY OF SUCH LIGHTING SHALL NOT EXCEED ONE FOOT CANDLE AS MEASURED AT THE ADJUTING PROPERTY LINE.
 - ALL ELECTRICAL, MECHANICAL AND PLUMBING PENETRATING FIRE PARTITIONS SHALL BE FIRE CAULKED. (PENETRATIONS THROUGH RATED CONSTRUCTION SHALL BE SEALED WITH A MATERIAL CAPABLE OF PREVENTING THE PASSAGE OF FLAMES AND HOT GASES WHEN TESTED IN ACCORDANCE WITH ASTM-E814.)

POWER PLAN LEGEND

SYM.	DESCRIPTION	COMMENTS
⊕	STANDARD 120V DUPLEX RECEPTACLE @ 18" AFF (UNLESS NOTED)	
⊕	DEDICATED RECEPTACLE SEE PANEL SCHEDULE FOR CIRCUIT SIZE	
⊕	GFI RECEPTACLE	ALL OUTLETS WITHIN 48" OF A WATER SOURCE SHALL BE GFI
⊕	WEATHER PROOF 120V DUPLEX RECEPT. @ 30" AFF (UNLESS NOTED)	
⊕	RECEPTACLE @ 6" ABOVE COUNTER	
⊕	QUAD CAT5 JACK WITH FACEPLATE NETWORKING CONNECTION	
⊕	FOYER DISCONNECT	
⊕	ELECTRIC WATER HEATER SEE AS NOTED	
⊕	AIR CONDITIONING COND. UNIT SEE MECH SHEETS FOR UNIT DETAILS	

NOTE: 1. CONNECT ALL EMERGENCY / EXIT LIGHT FIXTURES TO NEAREST CONSTANT POWER SOURCE.



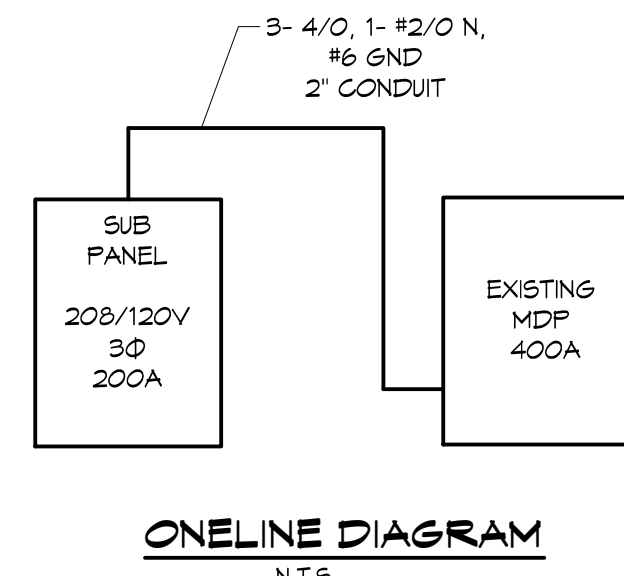
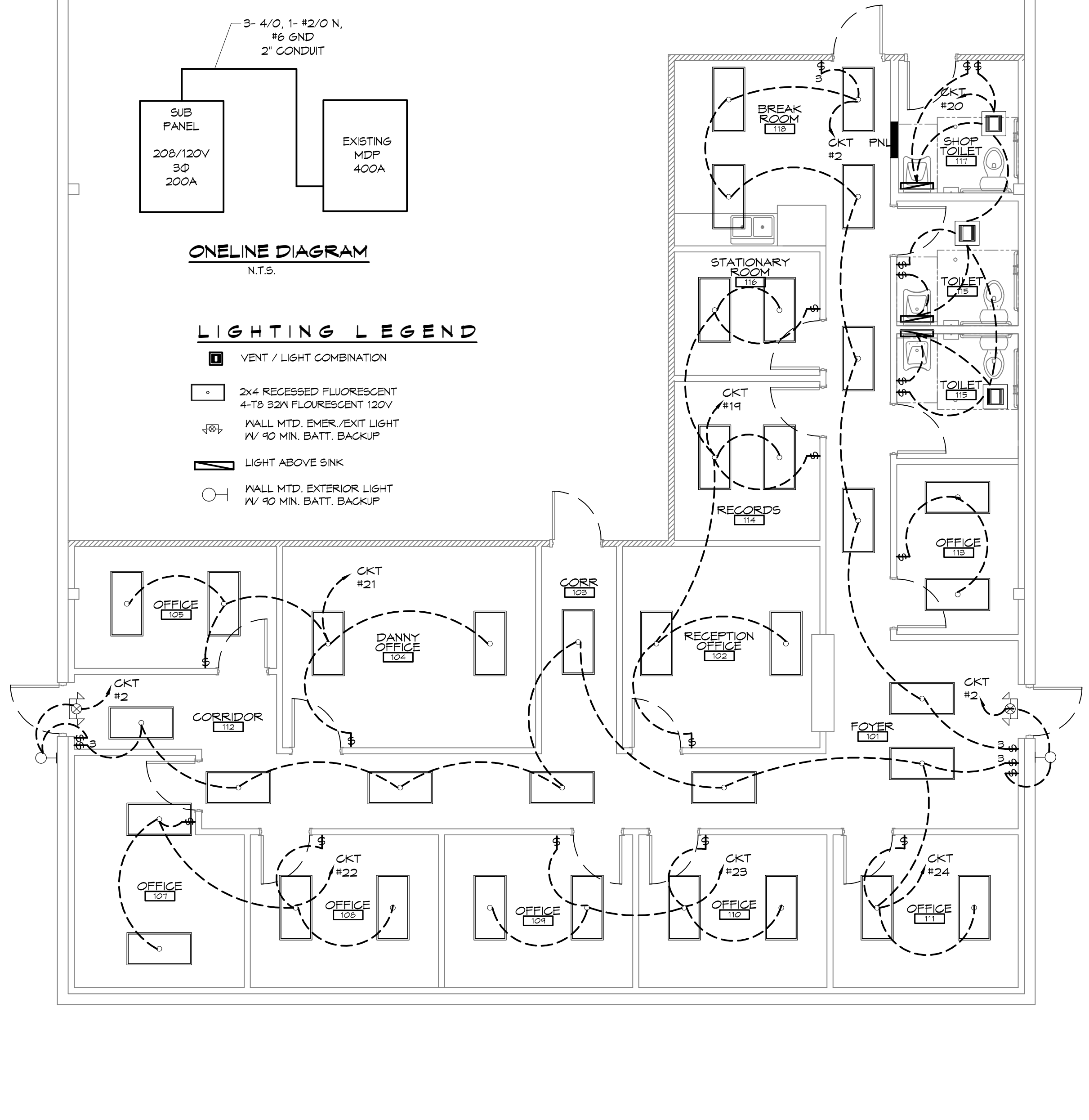
PANEL LP
LOCATION: WAREHOUSE
FEEDER SOURCE: MDP

VOLTAGE: 208/120V, 200A 3Ø, 4W, MLO
WALL MOUNTED IN EQUIPMENT GND BAR
BOLT ON BRK 22000 AC

CKT NO.	THIN WIRE SIZE	LOAD DESCRIPTION	BREAKER	LOAD (VA)	A-B-B-B-G-G		LOAD (VA)	BREAKER	LOAD DESCRIPTION	THIN WIRE SIZE	CKT NO.
					POLE	AMP					
1	#8	A/C CONDENSOR #2 4 TONS	40 2	4800			5000	2 60	AHU (15 kw HEAT)	#6	2
3	#8			4800			5000				4
5	#12	RESTROOM GFI RECEPTACLES	20 1	640			480	1 20	BREAK ROOM RECEPTACLES	#12	6
7	#12	STATIONARY/RECORDS RECEPTACLES	1	1280			1120	1 20	OFFICE/FOYER RECEPTACLES	#12	8
9	#10	ELECTRIC WATER HEATER 20 GALLON	50 2	4500			1280	1 20	OFFICE RECEPTACLES 110/111	#12	10
11	#10			4500			1440	1 20	OFFICE RECEPTACLES 105/109	#12	12
13	#12	OFFICE RECEPTACLES 105/107	20 1	1280			1280	1 20	OFFICE RECEPTACLES 116/114	#12	14
15	#12	OFFICES RECEPTACLES 104/102	20 1	1280			160	1 20	GFI RECEPTACLE / MICRO	#12	16
17	#12	BREAKROOM RECEPTACLES 100	20 1	400			160	1 20	GFI RECEPTACLE / FRIDG	#12	18
19	#12	OFFICE LIGHTS 102/114/116	20 1	1200			1200	1 20	MENS & WOMENS EXHAUST FANS & LIGHTS, UTILITY LIGHTS	#12	20
21	#12	OFFICE LIGHTS 104/105	20 1	800			800	1 20	OFFICE LIGHTS 104/105	#12	22
23	#12	OFFICE LIGHTS 109/110	20 1	800			1800	1 20	OFFICE 111/FOYER/HALL LIGHTS	#12	24
25	#12	FOYER/HALL/BREAK LIGHTS	20 1	1400			200	1 20	TREATMENT PLANT	#12	26
27	#12	BELL MOTOR OUTLET	20 1	200			800	1 20	EXIT LIGHTS	#12	28
29	#8	A/C CONDENSOR #1 4 TONS	40 2	4800			5000	2 60	AHU (15 kw HEAT)	#6	30
31	-	SPARE	20 -	-			-	20	SPARE	-	34
33	-	SPARE	20 -	-			-	20	SPARE	-	36
35	-	SPARE	-	-			-	-	SPARE	-	38
37	-	SPARE	-	-			-	-	SPARE	-	40
41	-	SPARE	-	-			-	-	SPARE	-	42

TOTAL CONNECTED LOAD (VA): 26,760
A-B: 14,760 B-D: 11,560 G-G: 0,000

SOLID NEUTRAL NEUTRAL WIRE (N) GROUND BUS GROUND WIRE (G)



- LIGHTING LEGEND**
- ⊕ VENT / LIGHT COMBINATION
 - ⊕ 2x4 RECESSED FLUORESCENT 4-T8 32W FLUORESCENT 120V
 - ⊕ WALL MTD. EMER. EXIT LIGHT W/ 90 MIN. BATT. BACKUP
 - ⊕ LIGHT ABOVE SINK
 - ⊕ WALL MTD. EXTERIOR LIGHT W/ 90 MIN. BATT. BACKUP

DAMMON
ENGINEERING, INC.

Architects & Engineers

Chief Architect: Kevin J. Kinchen, NCARB
Chief Engineer: Brian W. Martin, PE
554 Old Spanish Trail
Slidell, LA 70459
PH: 985.649.5832
dammoneng@aol.com
www.dammoneng.com
F: 985.641.5990

REVISIONS

#	DESCRIPTION	DATE



NEW OFFICES:

STAN ELMORE

62277 HWY 11
SLIDELL, LOUISIANA

JOB No: 2195 DATE: 01-14-2014 CHECKED BY: CKD
DRAWN BY: KJM

SHEET TITLE:
POWER / LIGHTING PLAN

DRAWING NUMBER:

11

SHEET No: 05 of 05