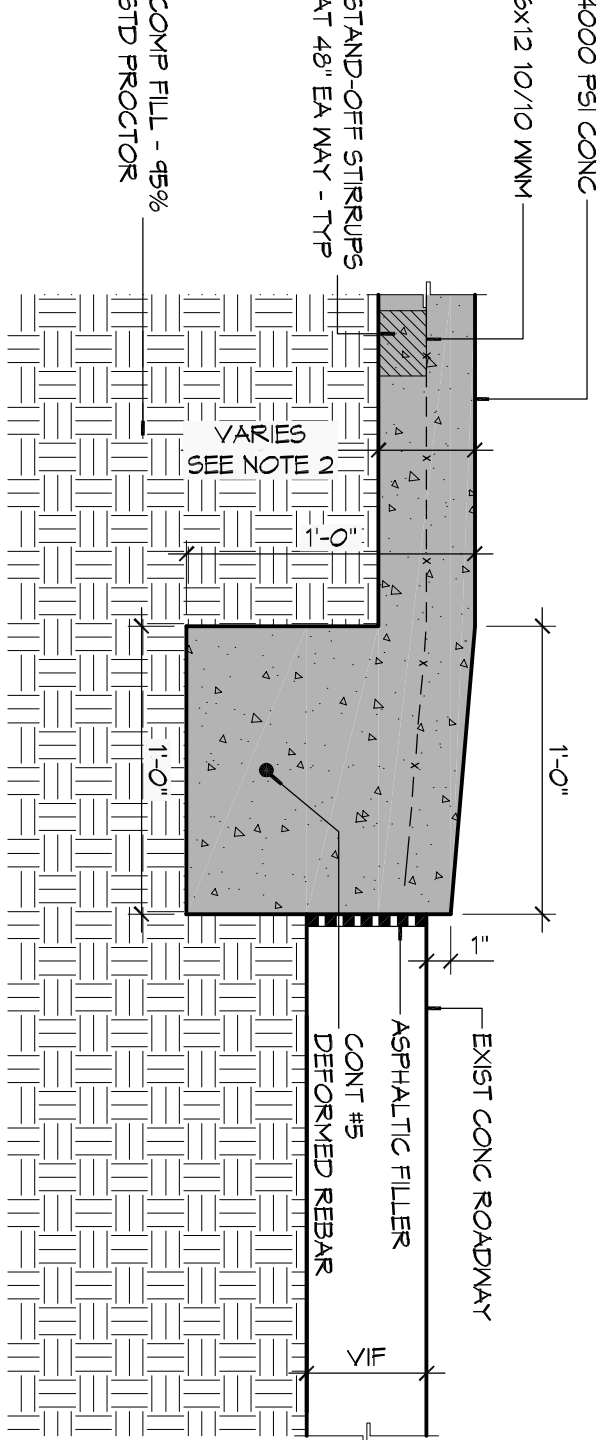
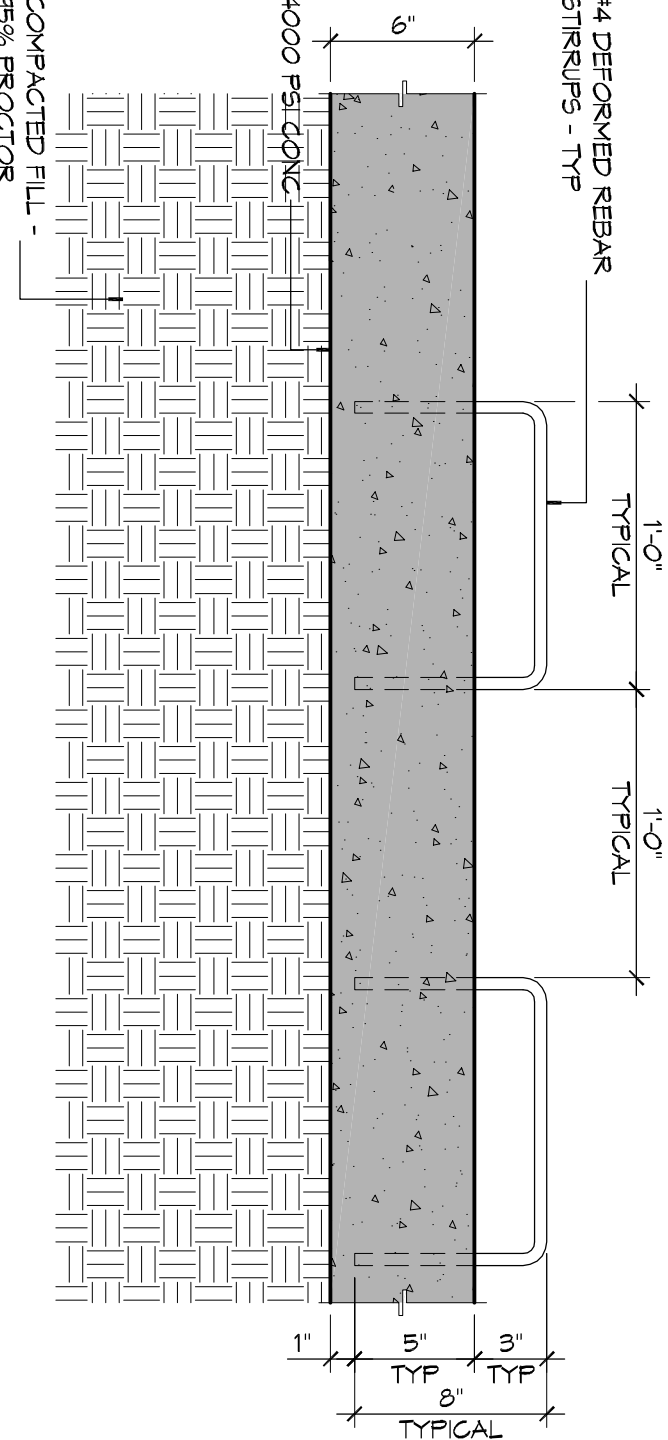


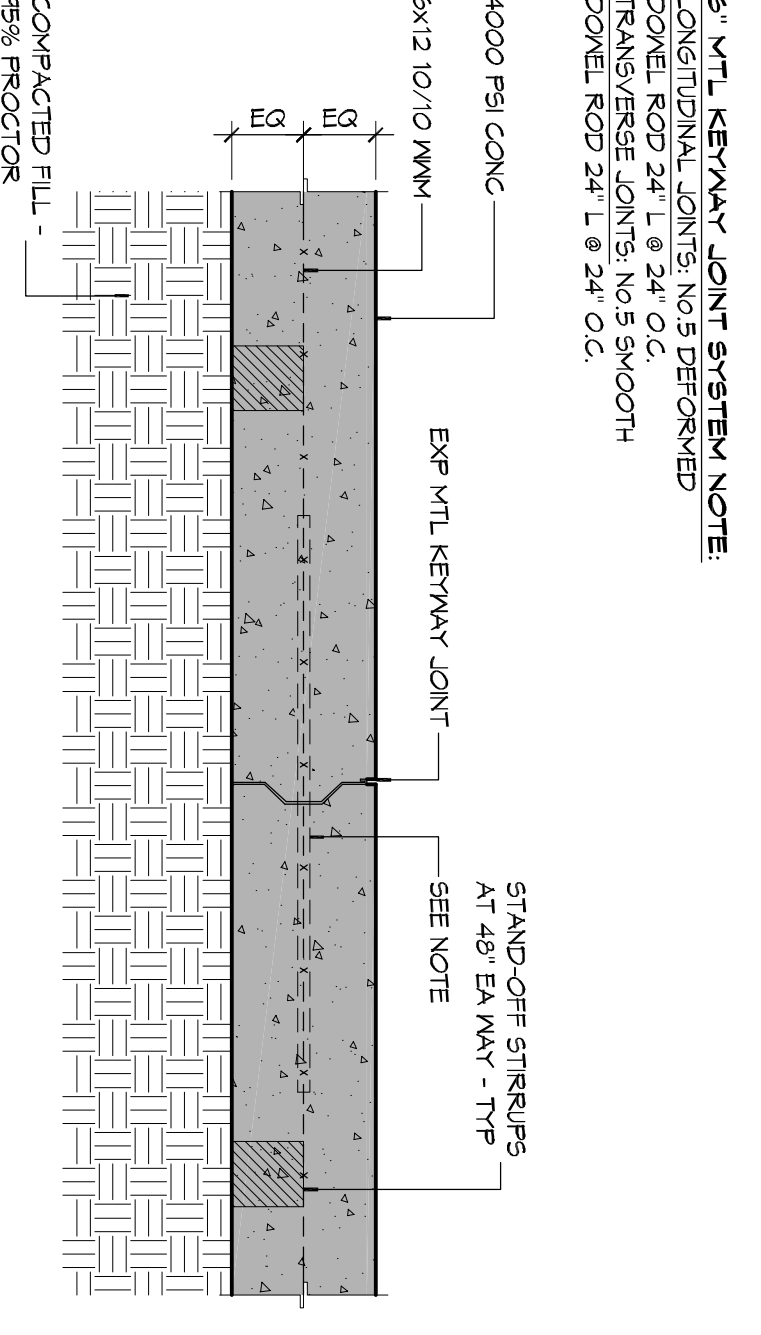
CORAFICE DETAIL
SCALE: 1/2" = 1'-0"



TYPICAL PAVING DETAIL
SCALE: 1/2" = 1'-0"



TYPICAL PAVING DETAIL
SCALE: 1/2" = 1'-0"



TYPICAL PAVING DETAIL
SCALE: 1/2" = 1'-0"

- GENERAL PAVING NOTES**
- ALL NEW CONCRETE SHALL HAVE A MINIMUM COMPRESSIVE STRENGTH OF 4000 PSI AT 28 DAYS AND A MINIMUM THICKNESS OF 6" CONCRETE MIX SHALL BE IN ACCORDANCE WITH THE LATEST REVISION OF ASTM C-150 TYPE 1. DIMENSIONS SHALL VARY AS FOLLOWS:
 - CONCRETS FLOORING AREAS 3" THICKNESS
 - DRIVE LANE & PARKING AREAS 6" THICKNESS
 - ALL REINFORCING STEEL SHALL BE ASTM-A6015 (GRADE 60) ALL REINFORCING STEEL SHALL BE SEPARATELY SUPPORTED TO PREVENT BUCKLING AND COLLAPSE UNDER LOADS. ALL REINFORCING STEEL SHALL BE PLACED AND INSTALLED AS SHOWN ON THE PAVING PLAN AND IN ACCORDANCE WITH THE MANUFACTURERS RECOMMENDATIONS.
 - ALL 6" GRADE FILL SHALL BE SELECT GRANULAR MATERIAL COMPACTED TO 95% STANDARD PROCTOR DENSITY IN A MAXIMUM OF 6" LIFTS.
 - CONTRACTOR SHALL CONTACT THEIR REGULATOR DEPARTMENT OF ENGINEERING PRIOR TO CONDUCTING ANY WORK.
 - ANY WORK WITHIN THE ROADWAY OR ADJACENT TO THE ROADWAY SHALL BE IN ACCORDANCE WITH THE REQUIREMENTS SET FORTH BY THE LINCOLN COUNTY TRAFFIC CONTROL DEVICES OF THE STATE OF LOUISIANA. THE CONTRACTOR MUST FINISH ALL NECESSARY TRAFFIC SIGNS AND/OR BARRICADES AND MAINTAIN THEM DURING CONSTRUCTION ACTIVITIES.

EXISTING

PROJECT: KBR

STORMWATER RUN-OFF CALCULATIONS

RATIONAL METHOD: Q=ACI

where: Q = Peak discharge of watershed in cubic feet per second (cfs) due to maximum storm assumed

A = Area of watershed in acres

C = Coefficient of runoff (C) = 0.25

I = Intensity (I) = 1.14 inches per hour based on concentration time (t_c)

[Q]TC = (1.48 (1000 - 9)^(0.77) (11400 * 0.25) / (1.48 (1000 - 9)^(0.77) (11400 * 0.25)))

where: TC = Time of concentration: time required for rain falling at most remote point to reach distributing point

C = The unit runoff coefficient based on conditions shown

I = Intensity in inches per hour

A = Watershed area in acres

PRIOR DEVELOPMENT

25 Year Frequency

Watershed Subarea	Area (Acres)	Runoff Coefficient (C)	Time of Concentration (TC) (min)	Intensity (I) (in/hr)	Peak Discharge (Q) (cfs)
Watershed Subarea 1	0.9	0.25	1.92	1.14	0.007
Watershed Subarea 2	0.25	0.25	1.92	1.14	0.000
Watershed Subarea 3	0.15	0.15	1.92	1.14	0.001
Watershed Subarea 4	0.37	0.37	1.92	1.14	0.004
Summary	1.67	0.25	1.92	1.14	0.012

POST DEVELOPMENT

25 Year Frequency

Watershed Subarea	Area (Acres)	Runoff Coefficient (C)	Time of Concentration (TC) (min)	Intensity (I) (in/hr)	Peak Discharge (Q) (cfs)
Watershed Subarea 1	0.9	0.25	1.92	1.14	0.007
Watershed Subarea 2	0.25	0.25	1.92	1.14	0.000
Watershed Subarea 3	0.15	0.15	1.92	1.14	0.001
Watershed Subarea 4	0.37	0.37	1.92	1.14	0.004
Summary	1.67	0.25	1.92	1.14	0.012

DETENTION REQUIREMENTS

Duration required: 0.01

ONE HOUR DETENTION

DETENTION DIMENSIONS

DISCHARGE END AREA REQUIREMENTS

10 Year Frequency

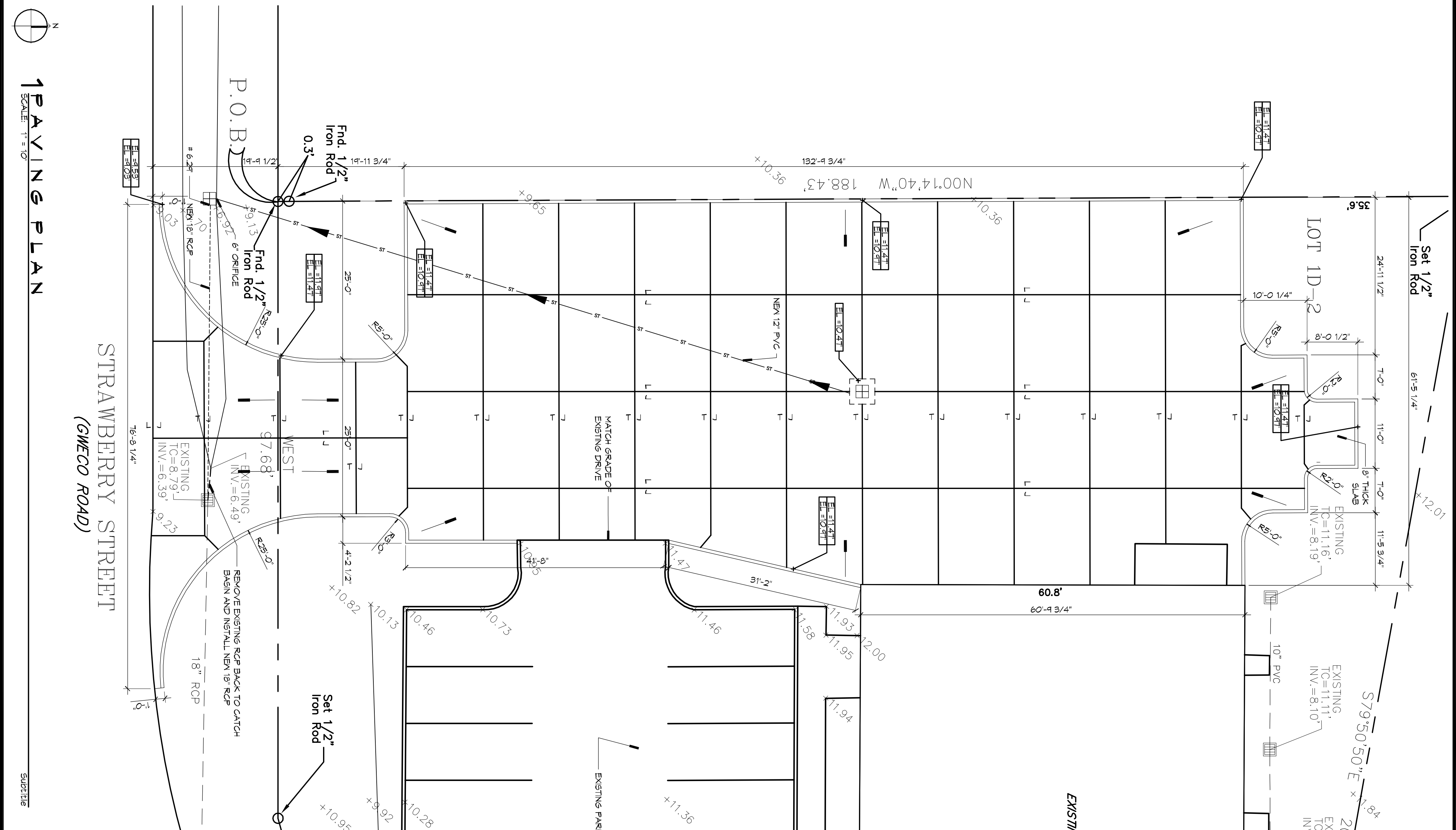
Parameter	Value
Duration (D)	1.00 hr
Area (A)	3941.8 sq ft
Depth (D)	1.00 ft
Volume (V)	3941.8 cu ft
Flow Rate (Q)	1.14 cfs
Peak Discharge (Q _p)	0.012 cfs

SITE LEGEND

PROPERTY LINE

EXISTING ELEVATIONS

DRAINAGE FLOW ARROWS



PAVING PLAN
SCALE: 1" = 1'-0"

DAMMON ENGINEERING, INC.
Architects & Engineers

Chief Architect: Kevin J. Kinchen, NCARB
Chief Engineer: Brian Nistich, PE

176 STRAWBERRY STREET
SLIDELL, LOUISIANA 70460

www.dammoneengineering.com
info@dammoneengineering.com
554 Old Spanish Trail
Slidell, LA 70458
P: 985.649.5832
F: 985.641.5950

PRELIMINARY NOT FOR CONSTRUCTION

REVISIONS

#	DESCRIPTION	DATE

OFFICE BUILDOUT FOR

**176 STRAWBERRY STREET
SLIDELL, LOUISIANA 70460**

JOB NO: 2221 DATE: 01-07-15

DRAWN BY: CKD/KJK CHECKED BY: CKD

C102

SHEET NO: 02 OF 8