

LIFE-SAFETY INFORMATION

APPLICABLE CODES	NFPA 101 LIFE-SAFETY CODE 2012
OCCUPANCY TYPE(S) AND CHAPTER(S)	INDUSTRIAL SPECIAL PURPOSE (CHAPTER 40)
MULTIPLE MIXED, OR SEPARATED OCCUPANCY	N/A
OCCUPANT LOAD FACTOR	5 OCCUPANTS
INDUSTRIAL	560 SF PER OCCUPANT = 5 OCCUPANTS
CLASSIFICATION OF HAZARD OF CONTENTS	REFERENCE OCCUPANCY CHAPTER AND 6.2.2 SPECIFICATION (ORDINARY OR HIGH)
ORDINARY HAZARD	REFERENCE CHAPTERS, TABLE A.8.2.1.2 AND COMMENTARY TABLE 6.1 IN HANDBOOK
MINIMUM EXIT SEPARATION DISTANCE FOR REMOTELY LOCATED EXITS	REFERENCE SECTION 7.5, SECTION 7.2 OR 7.3 DIAGONAL DISTANCE OF AREA SERVED
MINIMUM COMMON PATH OF TRAVEL DISTANCE	REFERENCE OCCUPANCY CHAPTER AND TABLE A.7.6)
INDUSTRIAL = 50 FT	REFERENCE OCCUPANCY CHAPTER AND TABLE A.7.6)
MAXIMUM DEAD-END CORRIDOR DISTANCE	REFERENCE OCCUPANCY CHAPTER AND TABLE A.7.6)
INDUSTRIAL = 50 FT	REFERENCE OCCUPANCY CHAPTER AND TABLE A.7.6)
MAXIMUM TRAVEL DISTANCE TO EXITS	REFERENCE OCCUPANCY CHAPTER AND TABLE A.7.6)
INDUSTRIAL = 300 FT	REFERENCE OCCUPANCY CHAPTER AND TABLE A.7.6)
EXTINGUISHMENT REQUIREMENTS	NOT SPRINKLED (NOT REQUIRED)
DETECTION, ALARM, AND COMMUNICATION SYSTEMS	ABOVE LEVEL OF DISCHARGE
ALLOWABLE HEIGHT AND BUILDING AREA	PER IBC EQUIVALENT CONSTRUCTION TYPE

BUILDING CODE INFORMATION

APPLICABLE CODES:	IBC 2012
CHAPTER 3 USE AND OCCUPANCY CLASSIFICATION	CAR WASH
BUSINESS GROUP B	
OCCUPANT LOAD	(TABLE 1004.1.2)
OCCUPANT LOAD	100 SF PER OCCUPANT (6802.5)
BUSINESS CONSTRUCTION TYPE(S)	(TABLE 602)
IB (SECTION 503)	ALLOWABLE HEIGHT AND BUILDING AREA LIMITED BY TYPE OF CONSTRUCTION
GROUP	MAXIMUM HEIGHT IN STORES
B	MAXIMUM AREA
	23,000

WIND SPEED DESIGN REQUIREMENTS

THIS BUILDING SHALL BE DESIGNED WITH IBC SEC. 1604 AS A PARTIALLY ENCLOSED BLDG USING THE FOLLOWING INFORMATION:

WIND DESIGN DATA	
DETERMINATION OF WIND LOADS SHALL BE IN ACCORDANCE WITH IBC SEC. 1604.3 (A), (B), OR (C) DEPENDING ON THE RISK CATEGORY	
V. ULTIMATE WIND SPEED (3 SECOND GUST) =	130 MPH (IBC FIG. 1604C)
V. NOMINAL WIND SPEED (1604.3.1)	101 MPH
RISK FACTOR:	CATEGORY I BLDG
TOPOGRAPHIC FACTOR =	EXPOSURE = C
DESIGN WIND PRESSURE (ASCE 7-10 TABLE 29.6-1):	45.7 PSF
INTERNAL PRESSURE COEFFICIENT (ASCE 7-10 TABLE 29.6-1-1):	± 0.18
LIVE LOADS (IBC SEC. 1607)	250 PSF
STORAGE WAREHOUSE	
ROOF LIVE LOADS (IBC TABLE 1607.1):	20 PSF ± 300 LB CONCENTRATED
SNOW LOADS (IBC TABLE 1608):	
GROUND SNOW LOAD (IBC FIG. 1608.2):	5 PSF

FLOOD ZONE INFORMATION

FLOOD ZONE:	AE	BASE FLOOD ELEVATION	11.0 NSVD
ELEVATIONS REFER TO NAVD 1989 DATUM			

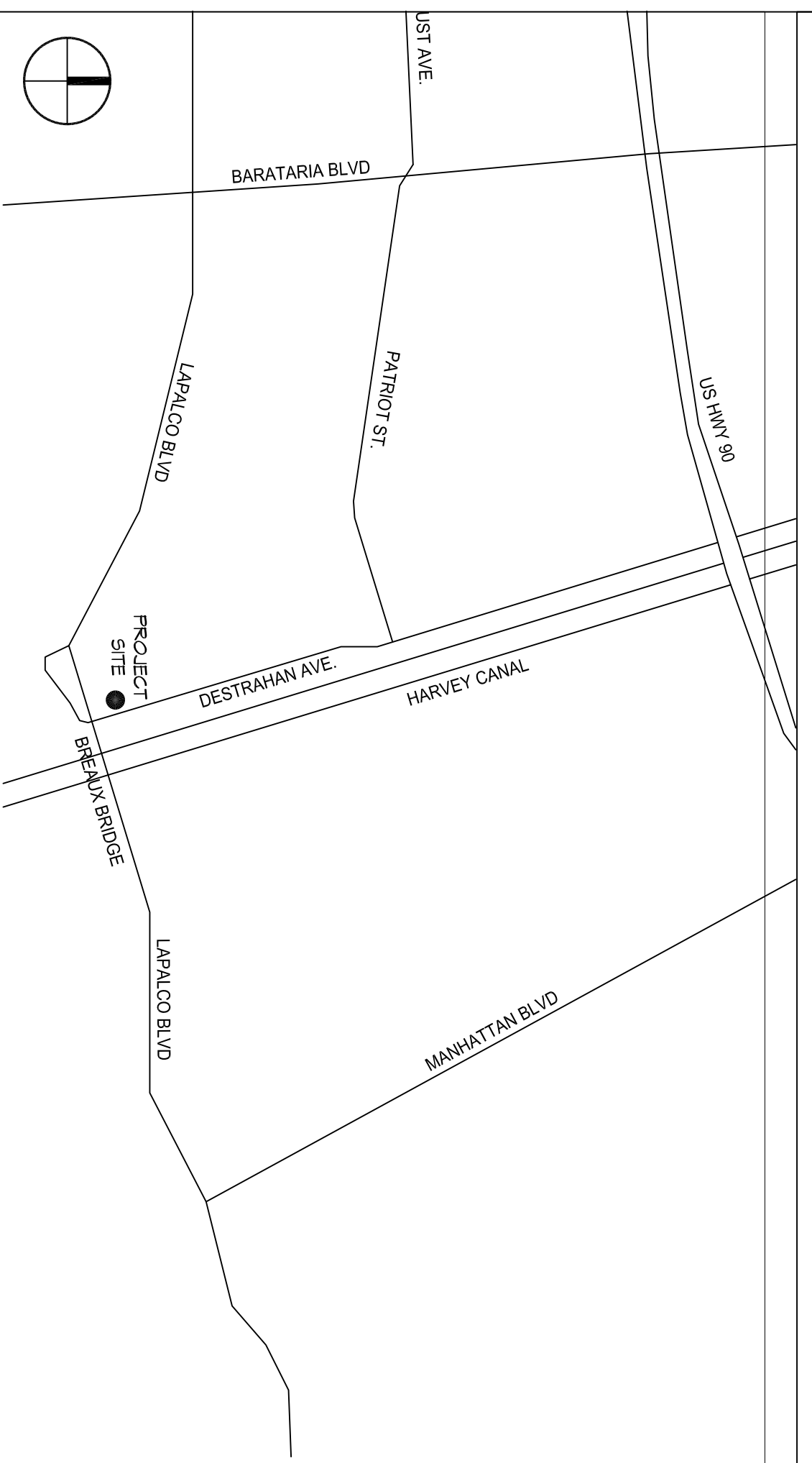
BLUELINE RENTALS

NEW WASH RACK BLDG

LIFE-SAFETY LEGEND

SYMBOL	DESCRIPTION
➤	EXITS
45	DOOR FIRE RATING (MINUTES)
130	DOOR WIDTH/EGRESS CAPACITY
⊗	EXIT LIGHT
⚡	FIRE EXTINGUISHER AND CABINET
⚡	FIRE EXTINGUISHER W/ WALL MTD BRACKET
•••••	COMMON PATH OF TRAVEL
•	TRAVEL DISTANCE
•	DEBISON POINT
---	SMOKE PARTITION
---	ONE-HOUR FIRE RATED PARTITION
---	TWO-HOUR FIRE RATED PARTITION
---	TWO-HOUR FIRE/SMOKE PARTITION
---	FOUR-HOUR RATED PARTITION

VICINITY MAP



SHEET INDEX

SHEET #	SHEET TITLE	SHEET #	SHEET TITLE
6001	GENERAL INFORMATION SHEET	A104	SCHEDULES
6002	ADA INFORMATION	A105	WALL TYPES
C101	SITE PLAN 1 OF 2	A106	COLD FORMED STEEL NOTES & DETAILS
C102	SITE PLAN 2 OF 2	A107	COLD FORMED STEEL DETAILS
S101	STRUCTURAL PLAN	M101	MECHANICAL PLANS
D101	1ST FLOOR DEMO PLAN	E101	ELECTRICAL POWER PLANS
D102	2ND FLOOR DEMO PLAN	E102	ELECTRICAL LIGHTING PLANS
A101	1ST FLOOR PLAN	E103	PANEL SCHEDULES
A102	2ND FLOOR PLAN	P101	PLUMBING-SANITARY SERVER PLANS
A103	REFLECTED CEILING PLAN		

PROJECT STATISTICS

EXISTING SQUARE FOOTAGE	8,690 SF. PER FLOOR	8,690 S.F.
2ND FLOOR RENOVATION		
PROJECT LOCATION:	2450 DESTREHAN AVENUE HARVEY, LOUISIANA 70058	2,344 S.F.

PROJECT LOCATION:
2450 DESTREHAN AVENUE
HARVEY, LOUISIANA 70058
OWNER:
BLUELINE RENTALS
7401 NEW TRAILS DRIVE SUITE 150
DUNWOODY, GA 30338
CONTACT:
BILL MINAT
(228) 301-4425



DAMMON ENGINEERING, INC.
554 Old Spanish Trail Slidell, LA 70458 (985) 649-5832

Chief Engineer: Brian Mistich, PE
554 Old Spanish Trail
Slidell, LA 70458

www.dammonengineering.com
info@dammonengineering.com
PH: 985.649.5832

REVISIONS		DATE
#	DESCRIPTION	

GOO1

2450 DESTREHAN AVENUE
HARVEY, LOUISIANA 70058

JOB No: 2279 DATE: 25 FEBRUARY 2016
DRAWN BY: KJK CHECKED BY: CKD

These drawings and specifications, designs and engineering, registered hereby and shall remain the property of Dammon Engineering, and no part thereof shall be copied, reproduced, or used in connection with any work or project other than that for which the same have been prepared and intended, without the written consent of Dammon Engineering, Inc. Any contract with these drawings or specifications shall constitute an agreement to the terms and conditions of the contract.

GOO1

SHEET TITLE:
GENERAL INFORMATION SHEET

DRAWING NUMBER:

SHEET No: 1 of 5