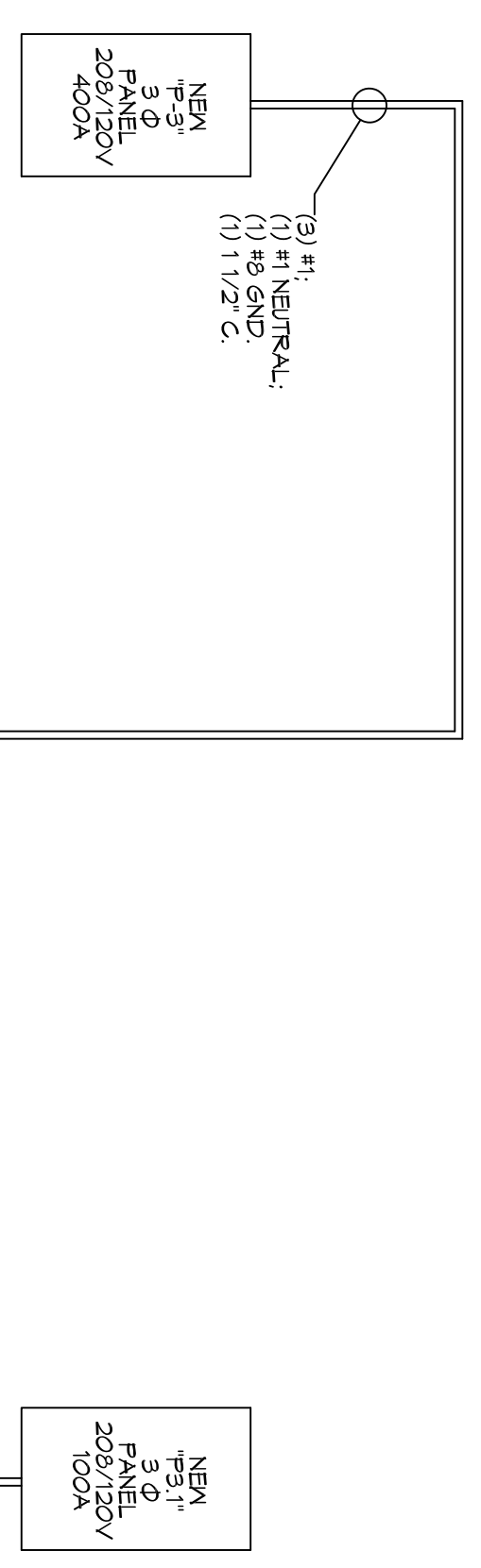


PANEL P3 (NEW PANEL)
LOCATION: WASH BACK
FEEDER SOURCE: P3

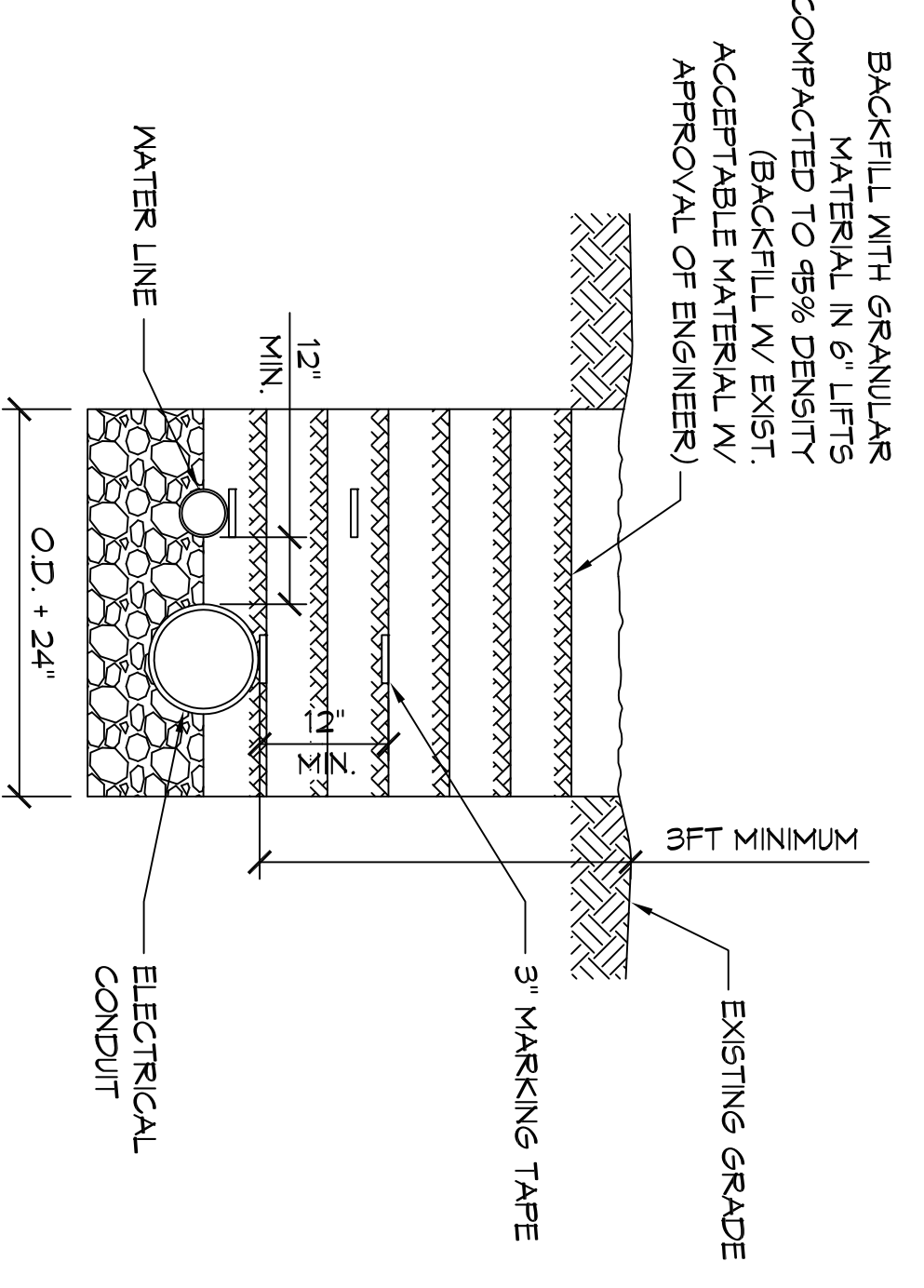
VOLTAGE: 208/120V / 3Ø / 4W
ENCLOSURE: SURFACE MOUNTED 100A PANELBOARD
NEVA SR, 22K ALC, EQUIPMENT GND BAR

CCT NO.	THIN SIZE	LOAD DESCRIPTION	LOCATION	AMP	ROLE	LOAD (VA)	AMP	LOAD (VA)	LOCATION	THIN SIZE	CCT NO.	
1	#0	EDS Closed Loop Recipe System		40	2	3328		3328		4	2	
3	#6	High Volume Water Cannon		50	2	4160		4160		6	6	
5	#6	High Volume Water Cannon		50	2	4160		4160		6	6	
7	#6	High Volume Water Cannon		50	2	4160		4160		6	6	
9	#6	High Volume Water Cannon		50	2	4160		4160		6	6	
11	#6	High Volume Water Cannon		50	2	4160		4160		6	6	
13	#6	High Volume Water Cannon		50	2	4160		4160		6	6	
15	#6	High Volume Water Cannon		50	2	4160		4160		6	6	
17	#6	High Volume Water Cannon		50	2	4160		4160		6	6	
						TOTAL CONNECTED LOAD (VA) = 22,832						
						40-7' 400						
						80-7' 650						
						120-7' 7400						
						GROUND BUS (GROUND WIRE (0))						



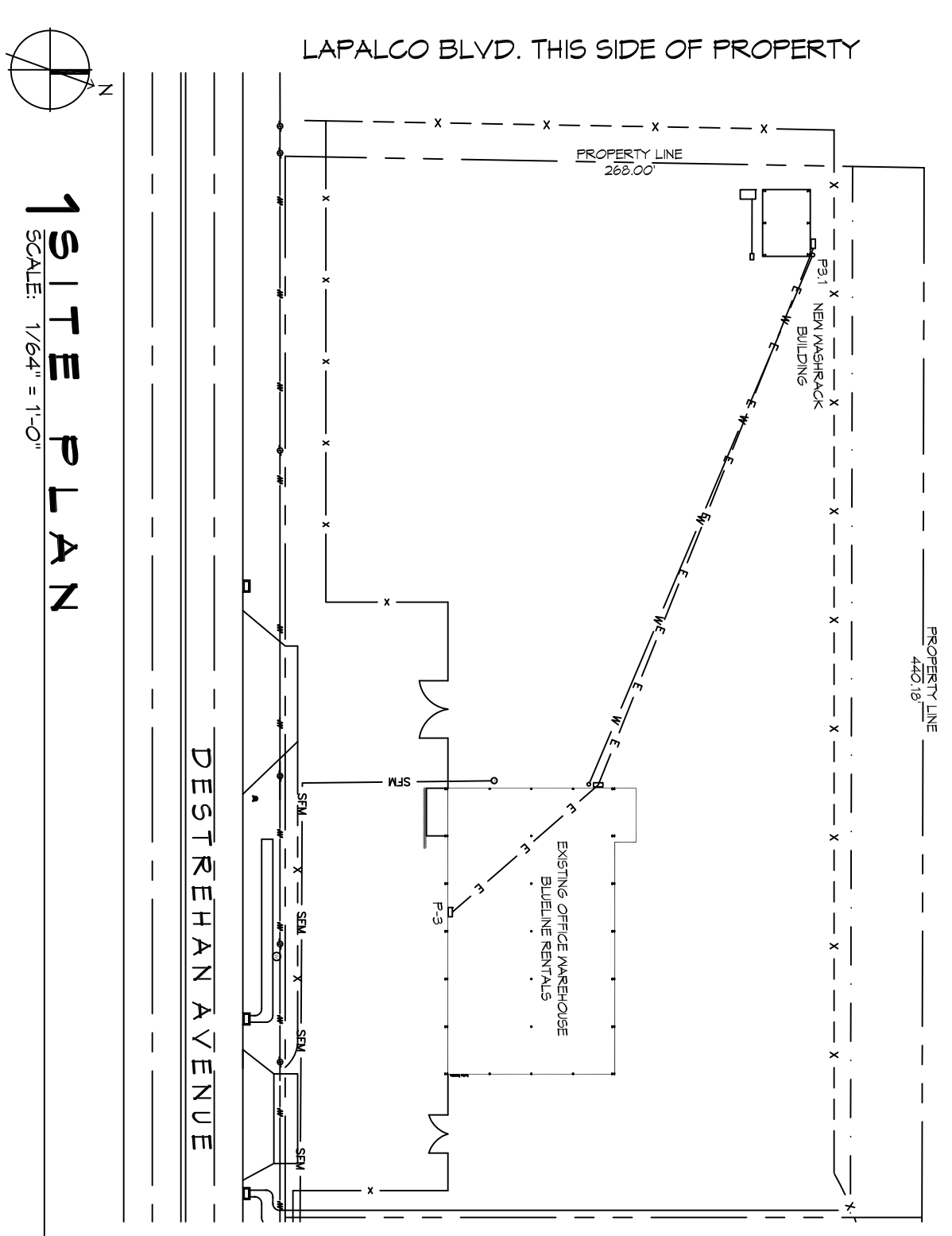
ONE-LINE DIAGRAM

SCALE: N.T.S.



PIPE TRENCH DETAIL

SCALE: 3/8" = 1'-0"



SITE PLAN

SCALE: 1/64" = 1'-0"

LIGHTING FIXTURE SCHEDULE

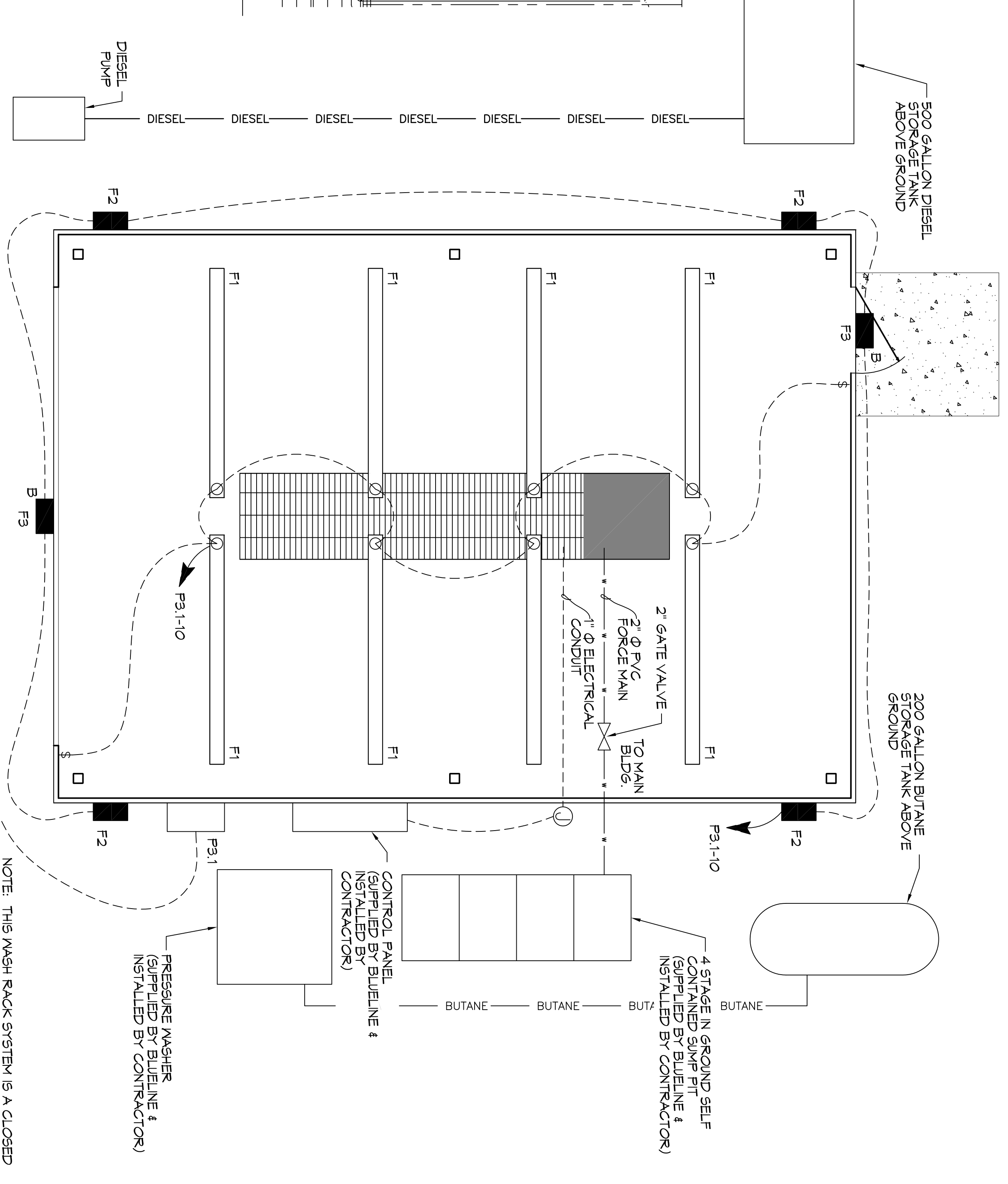
EXAMPLE	LABEL	DESCRIPTION	MANUFACTURER PRODUCT #	LAMPS	QTY
	F1	1XØ CEILING MOUNT FIXTURE	LITHONIA LIGHTING	2-T8, 32W FLUORESCENT W/VOLT	8
	F2	WALL MOUNTED FIXTURE	LITHONIA LIGHTING - TMR1 LED 3 40K M/VOLT PE	LED-55W V/VOLT	4
	F3	WALL MOUNTED FIXTURE	LITHONIA LIGHTING - TMR1 LED 3 40K M/VOLT PE	LED-55W V/VOLT	2

NOTES: 1. PROVIDE PRODUCTS BY LISTED MANUFACTURER OR EQUAL.

ELECTRICAL LEGEND

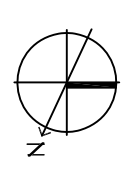
WATER MAIN
ELECTRICAL CONDUIT
DIESEL LINE
BUTANE LINE
HOSE BIB

- ### GENERAL LIGHTING NOTES
- ALL WORK SHALL COMPLY WITH APPLICABLE NATIONAL, STATE, AND LOCAL CODES, RULES, REGULATIONS, AND REQUIREMENTS OF THE SERVICE UTILITY COMPANY.
 - GENERAL CONTRACTOR SHALL NOTIFY THE ENGINEER IMMEDIATELY IF ANY CONFLICTS OCCUR BETWEEN LIGHTING AND ANY OTHER TRADE. DO NOT PROCEED WITH INSTALLATION IN THAT AREA UNTIL CONFLICT HAS BEEN RESOLVED TO THE SATISFACTION OF THE ENGINEER.
 - REFER TO ARCHITECTURAL DRAWINGS FOR EXACT LOCATION AND MOUNTING INSTRUCTIONS FOR ALL LIGHT FIXTURES. NOTIFY THE ARCHITECT AND ENGINEER OF ANY DISCREPANCIES BETWEEN THESE PLANS AND THE ARCHITECTURAL PLANS RELATING TO QUANTITY, TYPE AND LOCATION OF DEVICES AND/OR FIXTURES.
 - WHEN SPECIFIC LIGHT FIXTURE HAS BEEN SPECIFIED IN THE FIXTURE SCHEDULE, ELECTRICAL SHALL PROVIDE COMPLETE ASSEMBLY INCLUDING ALL PARTS AND HARDWARE TO INSURE PROPER FUNCTIONING FIXTURE.
 - ALL CONDUCTORS SHALL BE #12 AWG UNLESS NOTED OTHERWISE.
 - ALL 120V RINGS LONGER THAN 60 FEET SHALL BE #10 AWG AND 277V RINGS LONGER THAN 150 FEET SHALL BE #10 AWG UNLESS NOTED OTHERWISE.
 - ALL CONDUCTORS SHALL BE COPPER.
 - WHERE CONDUCTOR SIZES ARE NOTED ON DRAWINGS, THAT WIRE SIZE SHALL BE THROUGH THE ENTIRE RUN UNLESS OTHERWISE NOTED.
 - MOUNTED LIGHT SWITCHES, 4Ø, A/F, UNLESS NOTED OTHERWISE ON ARCHITECTURAL DRAWINGS.
 - NUMBER MORE THAN ONE SWITCH OCCURS IN THE SAME LOCATION, THEY SHALL BE INSTALLED IN A GANGE TYPE BOX UNDER ONE COVER PLATE. ALL GANGED SWITCHES SHALL HAVE A COMMON SEPARABLE RECEPTACLE. EACH MULTIGANGED BOX SHALL BE NO MORE THAN SIX (6) SWITCHES, UNLESS MORE THAN SIX (6) SWITCHES ARE SHOWN AT ONE (1) LOCATION. ADDITIONAL MULTIGANGED BOXES SHALL BE STACKED VERTICALLY AND THE BOTTOM OF THE MULTIGANGED SHALL BE AS EVEN AS POSSIBLE.
 - EACH DIMMER SWITCH SHALL HAVE A RATING RATINGS 25% HIGHER THAN THE TOTAL WATTAGE OF ALL LIGHTS TO BE CONTROLLED BY THE DIMMER. DIMMER SIZES 600, 1000, 1500, 2000 WATTS. LITRON NOVA T-5TAR, FLUORESCENT AND LOW VOLTAGE DIMMERS SHALL BE LITRON NOVA T-5TAR.
 - WHERE FLUORESCENT FIXTURES ARE SHOWN TO BE DIMMED, THE DIMMERS SHALL HAVE DIMMING TYPE BALLASTS WHICH ARE COMPATIBLE WITH THE SPECIFIED DIMMERS.
 - WHERE LED FIXTURES/LAMPS ARE SHOWN TO BE DIMMED, THE DIMMER SHALL BE COMPATIBLE WITH THE FIXTURE/LAMP SPECIFIED OR PROVIDED.
 - ALL FLUORESCENT FIXTURES THAT UTILIZE DOUBLE-ENDED LAMPS AND CONTAIN BALLASTS SHALL BE PROVIDED WITH A DISCONNECTING MEANS IN ACCORDANCE WITH NEC 410.75G.
 - MINIMUM CONDUCTOR SIZE SHALL BE #12 600V INSULATION. MINIMUM SIZE CONDUIT SHALL BE 3/4" ELECTRICAL. METALLIC TRUNGS (E/M) FOR INTERIOR USE 3/4" RIGID ALUMINUM FOR EXTERIOR USE ABOVE GRADE AND 1" SCHEDULE 40 PVC BURNED MINIMUM OF 16" FOR NON-FIRE-RATED TRAFFIC AREAS FOR CONDUITS BELOW GRADE. BUT SHALL BE USED WITH METAL STUD CONSTRUCTION. 6 FT LENGTH MC CABLE IS ALLOWED ABOVE PROFFED CEILING. INTERIOR FITTINGS SHALL BE CAST WHERE EXPOSED ON WALLS AND EXTERIOR FITTINGS SHALL BE CAST BOXES WITH NEVA SR COVERS(S).



ELECTRICAL PLAN

SCALE: 3/8" = 1'-0"



JACOBY ENGINEERS

2450 DESTREHAN AVENUE
HARVEY, LOUISIANA 70058

JOB No: 2272 DATE: 25 FEBRUARY 2016
DRAWN BY: DPD CHECKED BY: JAC

1 of 5

PRELIMINARY

REVISIONS

#	DESCRIPTION	DATE
1	ADD STRUCTURAL SHEET TO PLAN SET	1/29/2015

SCALE:

DAMMON ENGINEERING, INC.
554 Old Spanish Trail Slidell, LA 70458 (985) 649-5832

Chief Engineer: Brian Mistich, PE
554 Old Spanish Trail
Slidell, LA 70458

www.dammonengineering.com
info@dammonengineering.com
PH: 985.649.5832