

**L I F E - S A F E T Y I N F O R M A T I O N**

|                                                                              |                                                                                                      |
|------------------------------------------------------------------------------|------------------------------------------------------------------------------------------------------|
| <b>APPLICABLE CODES</b>                                                      | NFPA 101 LIFE-SAFETY CODE 2012                                                                       |
| OCCUPANCY TYPE(S) AND CHAPTER(S)                                             |                                                                                                      |
| INDUSTRIAL SPECIAL PROPOSE (CHAPTER 40)                                      |                                                                                                      |
| MULTIPLE MIXED, OR SEPARATED OCCUPANCY                                       | (REFERENCE CHAPTER 611.4)                                                                            |
| N/A                                                                          |                                                                                                      |
| <b>OCCUPANT LOAD FACTOR</b>                                                  | (REFERENCE TABLE 73.1.2)                                                                             |
| INDUSTRIAL                                                                   | 560 SF PER OCCUPANT = 5 OCCUPANTS                                                                    |
| <b>CLASSIFICATION OF HAZARD OF CONTENTS</b>                                  |                                                                                                      |
| (REFERENCE OCCUPANCY CHAPTER AND 6.2.2 SPECIFICATION ORDINARY, OR HIGH)      |                                                                                                      |
| <b>ORDINARY HAZARD</b>                                                       | (REFERENCE CHAPTERS, TABLE A.8.2.1.2 AND COMMENTARY TABLE 8.1 IN HANDBOOK)                           |
| CONSTRUCTION TYPE(S)                                                         |                                                                                                      |
| I (100)                                                                      |                                                                                                      |
| <b>MINIMUM EXIT SEPARATION DISTANCE FOR REMOTELY LOCATED EXITS</b>           |                                                                                                      |
| (REFERENCE SECTION 7.5, SPECIFY 1/2 OR 1/3 DIAGONAL DISTANCE OF AREA SERVED) |                                                                                                      |
| 1/2 DIAGONAL =                                                               |                                                                                                      |
| <b>MAXIMUM COMMON PATH OR TRAVEL DISTANCE</b>                                | (REFERENCE OCCUPANCY CHAPTER AND TABLE A.7.6)                                                        |
| INDUSTRIAL = 50 FT                                                           | (REFERENCE OCCUPANCY CHAPTER AND TABLE A.7.6)                                                        |
| <b>MAXIMUM DEAD-END CORRIDOR DISTANCE</b>                                    | (REFERENCE OCCUPANCY CHAPTER AND TABLE A.7.6)                                                        |
| INDUSTRIAL = 50 FT                                                           |                                                                                                      |
| <b>MAXIMUM TRAVEL DISTANCE TO EXITS</b>                                      | (REFERENCE OCCUPANCY CHAPTER AND TABLE A.7.6)                                                        |
| INDUSTRIAL = 300 FT                                                          |                                                                                                      |
| <b>EXTINGUISHMENT REQUIREMENTS</b>                                           | NOT SPRINKLED (NOT REQUIRED)                                                                         |
| <b>DETECTION, ALARM, AND COMMUNICATION SYSTEMS</b>                           | NOT REQUIRED BUILDING OCCUPANT LOAD < 100 OCCUPANTS, LESS THAN 25 OCCUPANTS ABOVE LEVEL OF DISCHARGE |
| <b>ALLOWABLE HEIGHT AND BUILDING AREA</b>                                    | PER IBC EQUIVALENT CONSTRUCTION TYPE                                                                 |

**B U I L D I N G C O D E I N F O R M A T I O N**

|                                                                           |                                      |
|---------------------------------------------------------------------------|--------------------------------------|
| <b>APPLICABLE CODES: IBC 2012</b>                                         |                                      |
| CHAPTER 9 USE AND OCCUPANCY CLASSIFICATION                                |                                      |
| <b>BUSINESS GROUP B</b>                                                   | CAR WASH                             |
| <b>OCCUPANT LOAD</b>                                                      | (TABLE 1004.1.2)                     |
| <b>BUSINESS</b>                                                           | 100 SF PER OCCUPANT (68025) 560 S.F. |
| <b>CONSTRUCTION TYPE(S)</b>                                               | (TABLE 603) 5 OCCUPANTS              |
| <b>IBC (SECTION 503)</b>                                                  |                                      |
| <b>ALLOWABLE HEIGHT AND BUILDING AREA LIMITED BY TYPE OF CONSTRUCTION</b> |                                      |
| <b>GROUP</b>                                                              | MAXIMUM HEIGHT IN STORES             |
| B                                                                         | MAXIMUM AREA                         |
|                                                                           | 23,000                               |

**M I N D S P E E D D E S I G N R E Q U I R E M E N T S**

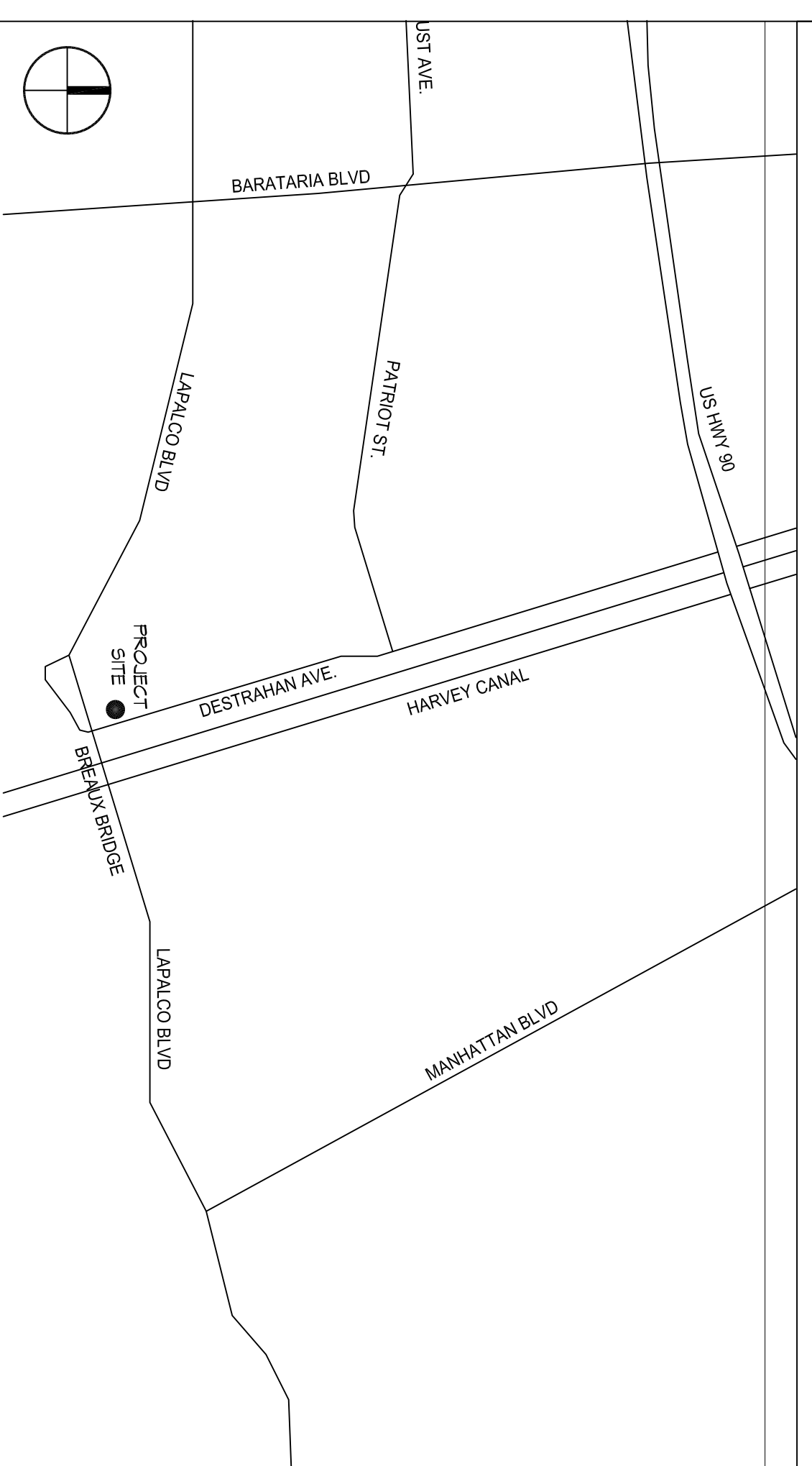
THIS BUILDING SHALL BE DESIGNED WITH IBC SEC. 1609 AS A PARTIALLY ENCLOSED BLDG USING THE FOLLOWING INFORMATION:

|                                                                                                                                |                                |
|--------------------------------------------------------------------------------------------------------------------------------|--------------------------------|
| <b>WIND DESIGN DATA</b>                                                                                                        |                                |
| <b>DETERMINATION OF WIND LOADS SHALL BE IN ACCORDANCE WITH IBC SEC. 1609.3 (A), (B), OR (C) DEPENDING ON THE RISK CATEGORY</b> |                                |
| V ULTIMATE WIND SPEED (3 SECOND GUST) =                                                                                        | 130 MPH (IBC FIG. 1609C)       |
| V NOMINAL WIND SPEED (1609.3.1)                                                                                                | 101 MPH                        |
| <b>RISK FACTOR:</b>                                                                                                            | CATEGORY I BLDG                |
| <b>TOPOGRAPHIC FACTOR =</b>                                                                                                    | EXPOSURE = C                   |
| <b>DESIGN WIND PRESSURE (ASCE 7-10 TABLE 26.6-1):</b>                                                                          | 45.1 PSF                       |
| <b>INTERNAL PRESSURE COEFFICIENT (ASCE 7-10 TABLE 26.11-1):</b>                                                                | ± 0.18                         |
| <b>LIVE LOADS (IBC SEC. 1607)</b>                                                                                              | 250 PSF                        |
| <b>STORAGE WAREHOUSE</b>                                                                                                       |                                |
| <b>ROOF LIVE LOADS (IBC TABLE 1607.1):</b>                                                                                     | 20 PSF ± 300 LB CONCENTRATED   |
| <b>SNOW LOADS (IBC TABLE 1608):</b>                                                                                            |                                |
| <b>GROUND SNOW LOAD (IBC FIG. 1608.2):</b>                                                                                     | 5 PSF                          |
| <b>FLOOD ZONE INFORMATION</b>                                                                                                  |                                |
| <b>FIRM: COMMUNITY MAP NO 2205(C) 0199 E, REVISED 3/23/1995</b>                                                                |                                |
| <b>FLOOD ZONE:</b>                                                                                                             | AE                             |
| <b>ELEVATIONS REFER TO NGVD 1989 DATUM</b>                                                                                     | BASE FLOOD ELEVATION 11.0 NGVD |

**B L U E L I N E R E N T A L S**

**N E W W A S H R A C K B L D G**

**V I C I N I T Y M A P**



| S H E E T I N D E X |                             |
|---------------------|-----------------------------|
| SHEET #             | SHEET TITLE                 |
| 0001                | GENERAL INFORMATION SHEET   |
| C101                | SITE PLAN                   |
| S101                | FOUNDATION PLAN             |
| A101                | BUILDING PLAN AND ELEVATION |
| E101                | ELECTRICAL PLAN             |
| P101                | PLUMBING PLAN               |

**P R O J E C T S T A T I S T I C S**

SQUARE FOOTAGE 560 S.F.  
**P R O J E C T L O C A T I O N :**  
 2450 DESTREHAN AVENUE  
 HARVEY, LOUISIANA 70058  
**C A N E R**  
 BLUELINE RENTALS  
 5401 NEW TRAILS DRIVE, SUITE 180  
 THE WOODLANDS, TX 77380  
 CHIEF ENGINEER  
 BILL MISTIK  
 (828) 301-4425

554 Old Spanish Trail Slidell, LA 70458 (985) 649-5832

Chief Engineer: Brian Mistik, PE  
 554 Old Spanish Trail Slidell, LA 70458  
 www.dammonengineering.com  
 info@dammonengineering.com  
 PH: 985.649.5832

| REVISIONS |             | DATE |
|-----------|-------------|------|
| #         | DESCRIPTION |      |
|           |             |      |
|           |             |      |
|           |             |      |
|           |             |      |
|           |             |      |
|           |             |      |
|           |             |      |
|           |             |      |
|           |             |      |

**S U B M I T T A L S**

2450 DESTREHAN AVENUE  
 HARVEY, LOUISIANA 70058

JOB No: 2274 DATE: 25 FEBRUARY 2016  
 DRAWN BY: KJK CHECKED BY: CKD

The above drawings and specifications, designs and engineering, registered hereby and shall remain the property of Dammon Engineering, and no part thereof shall be copied, reproduced, or used in connection with any work or project other than the specific project for which the same have been prepared and intended without written consent of Dammon Engineering, Inc. Please contact with those covering in specific cases that conditions are subject to change without notice.

SHEET TITLE: GENERAL INFORMATION SHEET  
 DRAWING NUMBER:

THESE PLANS HAVE BEEN PREPARED BY ME OR UNDER MY SUPERVISION AND TO THE BEST OF MY KNOWLEDGE COMPLY WITH ALL LOCAL, STATE AND FEDERAL REQUIREMENTS.

SHEET No: 1 of 5