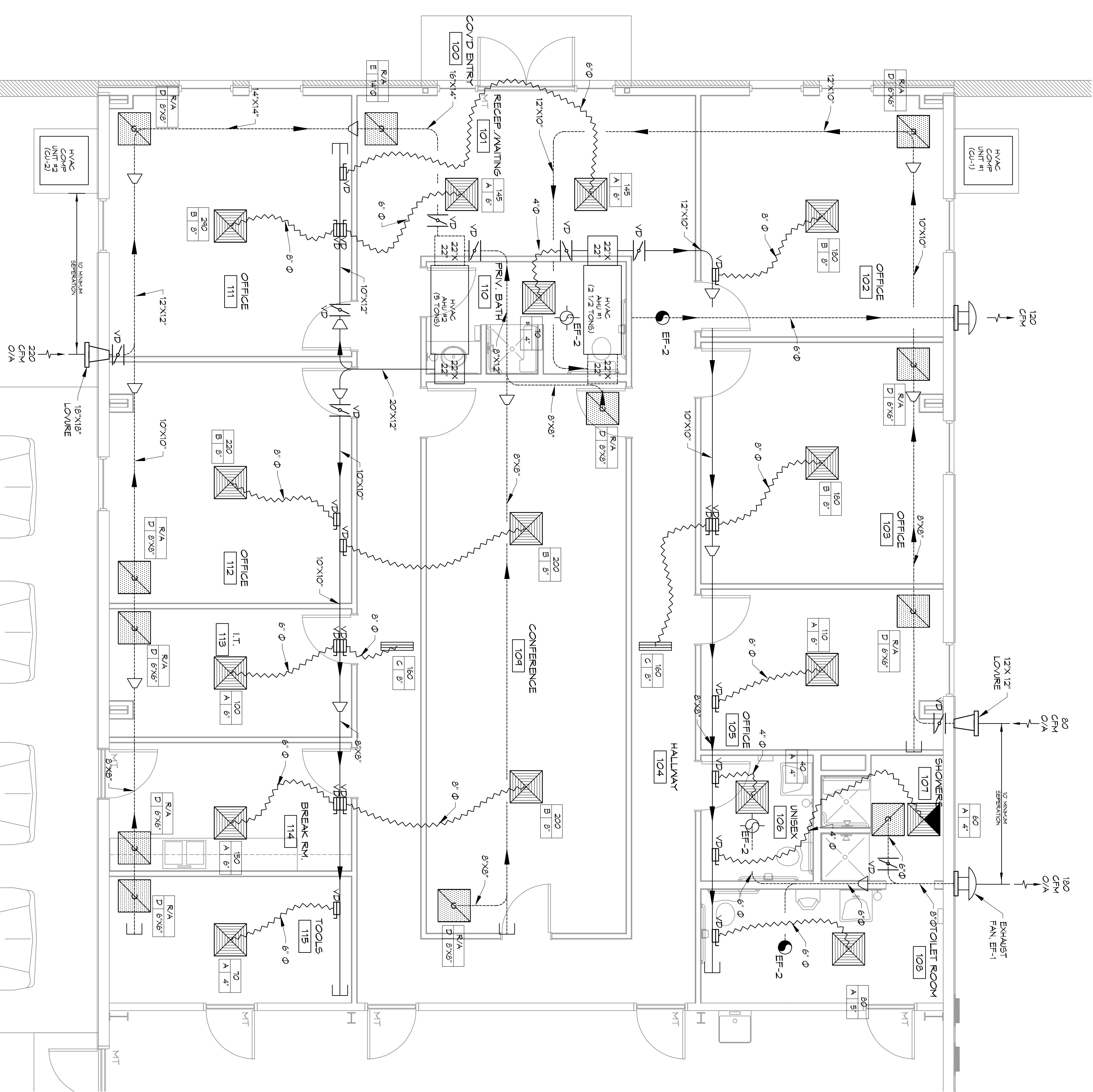




17 MECHANICAL PLAN
SCALE: 1/4" = 1'-0"



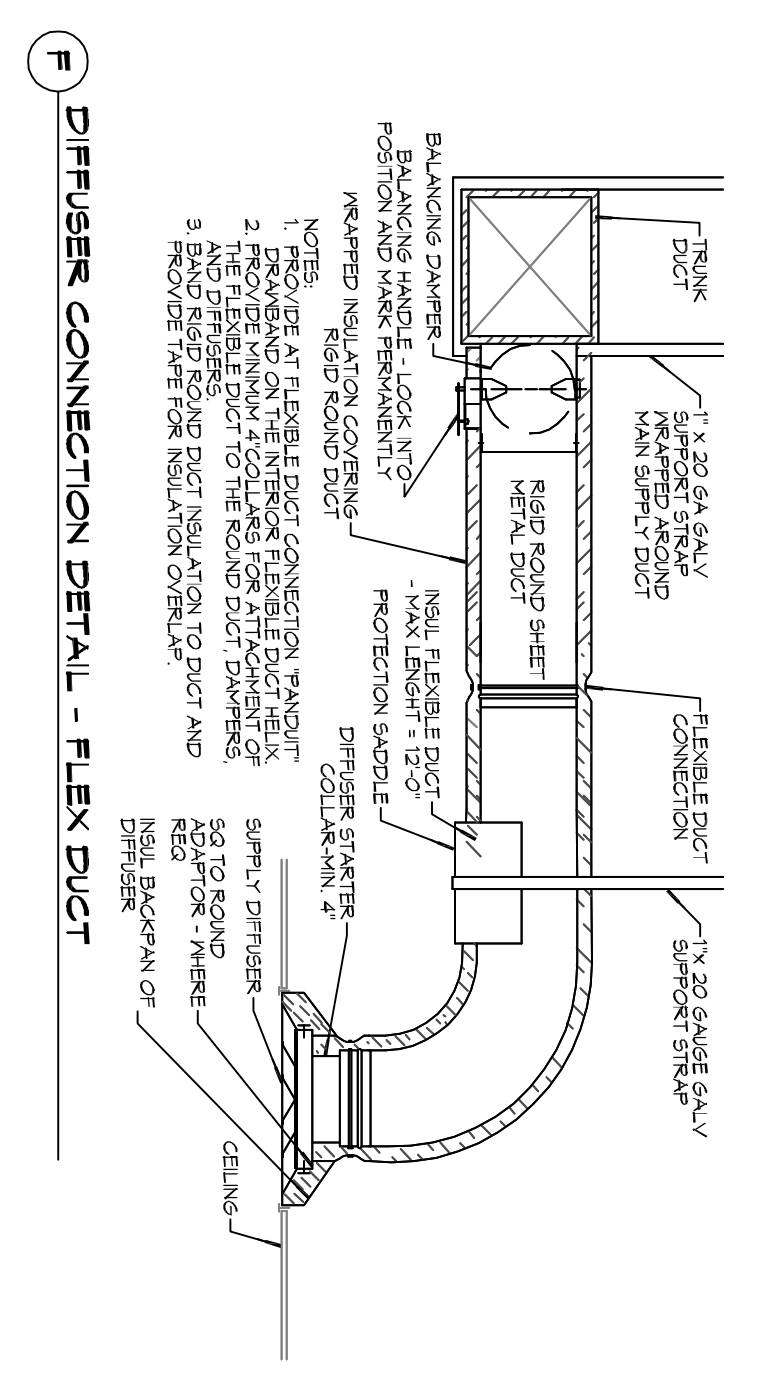
AIR HANDLER				DX SPLIT SYSTEM SCHEDULE				CONDENSER				REMARKS				
TAG NO.	TRADE MODEL	NOMINAL TONS	OA CFM	COOLING TMBH SHH	Motor HP	ESP (T WC)	HEAT KW	POWER VAC PH/MCA	TAG MODEL NO.	TRADE	POWER VAC PH/MCA	TAG MODEL NO.	TRADE	POWER	REMARKS	
AHU-1	TE66A030	2.5	880	28.4	22	1/3	0.04	3.8	240	1	24	CU-1	4TRR309E1	240	1	1, 2, 3, 4
AHU-2	TE66A030	5	1680	54.8	41.5	3/4	0.05	4.8	240	1	34	CU-2	4TRR309E1	240	1	1, 2, 3, 4

- NOTES:
1. Provide inlet filter box, single point power connection, expansion valve, check valve, condensate overflow switch & programmable 7/24 thermostat with lockable cover.
 2. Cooling capacities to be rated in accordance with AHRI standard 210/280 for ASHRAE standard design weather conditions in New Orleans, LA.
 3. Install units in accordance with manufacturer's recommendations.
 4. Provide new filters after commissioning and final acceptance.

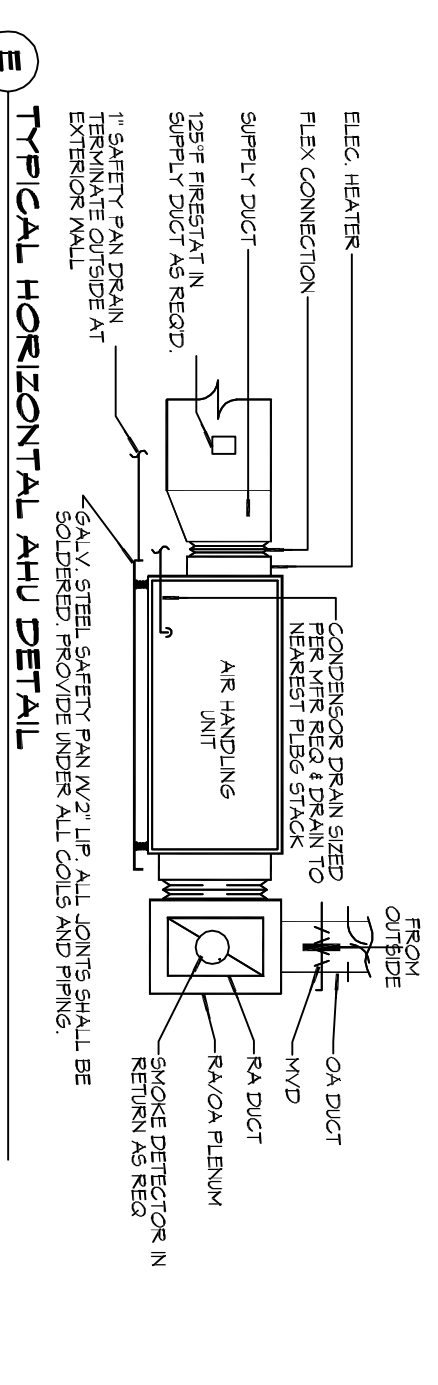
TAG	SERVICE	NECK SIZE	DESCRIPTION
A	SUPPLY AIR REF. PLANT 24" X 24" FIXED PATTERN PLIQUEE TUDS 20MIN WITH DAMPER		
B	SUPPLY AIR REF. PLANT 24" X 24" FIXED PATTERN PLIQUEE TUDS 20MIN WITH DAMPER		
C	SUPPLY AIR REF. PLANT 24" X 24" FIXED PATTERN PLIQUEE TUDS 20MIN WITH DAMPER		
D	RETURN AIR REF. PLANT 24" X 24" PERFORATED RETURN TUDS PAR WITH DAMPER		
E	RETURN AIR REF. PLANT 24" X 24" PERFORATED RETURN TUDS PAR WITH DAMPER		

TAG	MODEL	TYPE	POWER	REMARKS
EF-1	180	01	NA	118 1180 CENTRIFUGAL FINE DIRECT DRIVE
EF-2	120	01	NA	120 1200 CENTRIFUGAL FINE DIRECT DRIVE

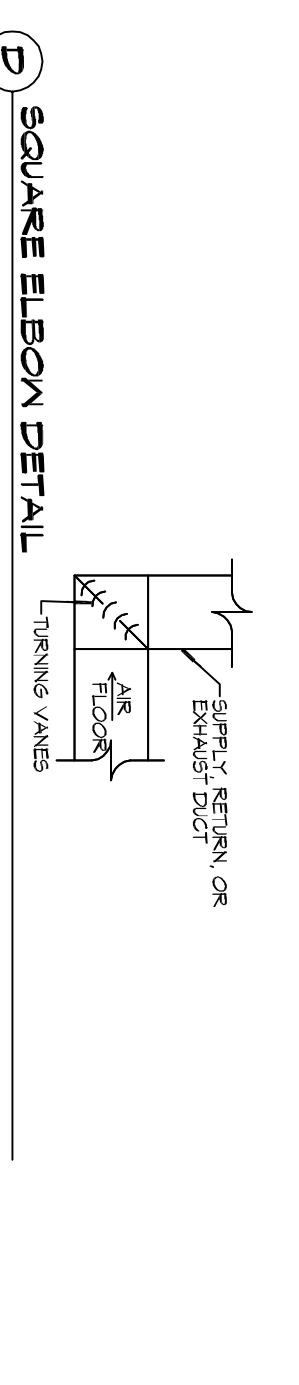
- EXHAUST FAN SCHEDULE
1. INSTALL PER MANUFACTURER'S RECOMMENDATIONS.
 2. MANUAL BALANCING DAMPER
 3. INTERLOCK WITH LIGHT SWITCH



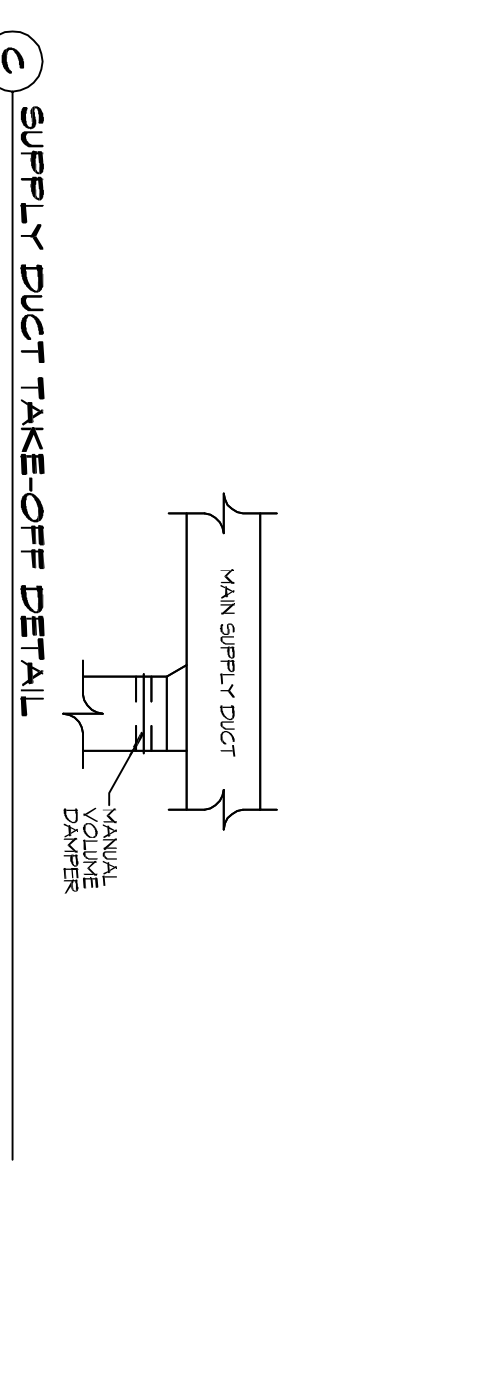
F DIFFUSER CONNECTION DETAIL - FLEX DUCT



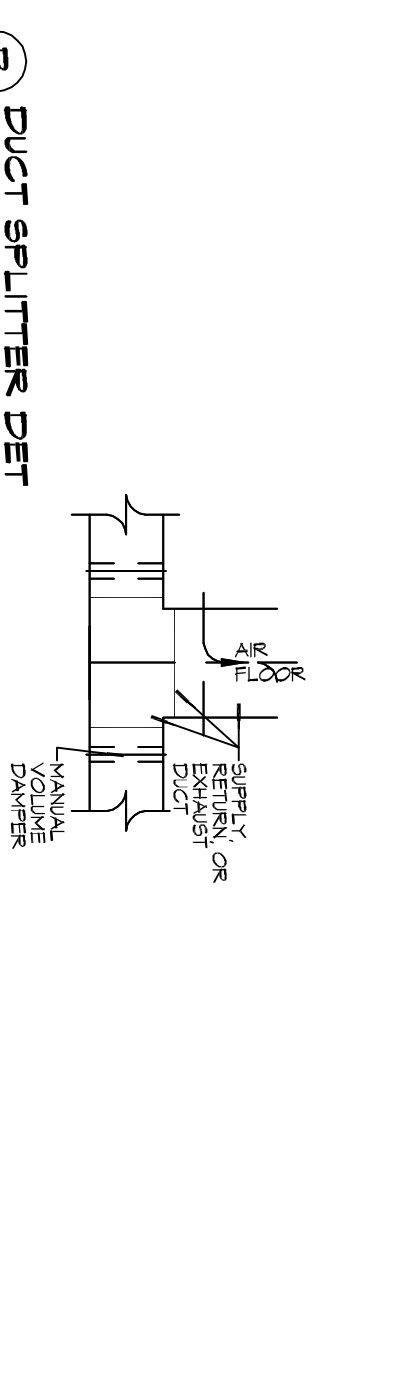
E TYPICAL HORIZONTAL AHU DETAIL



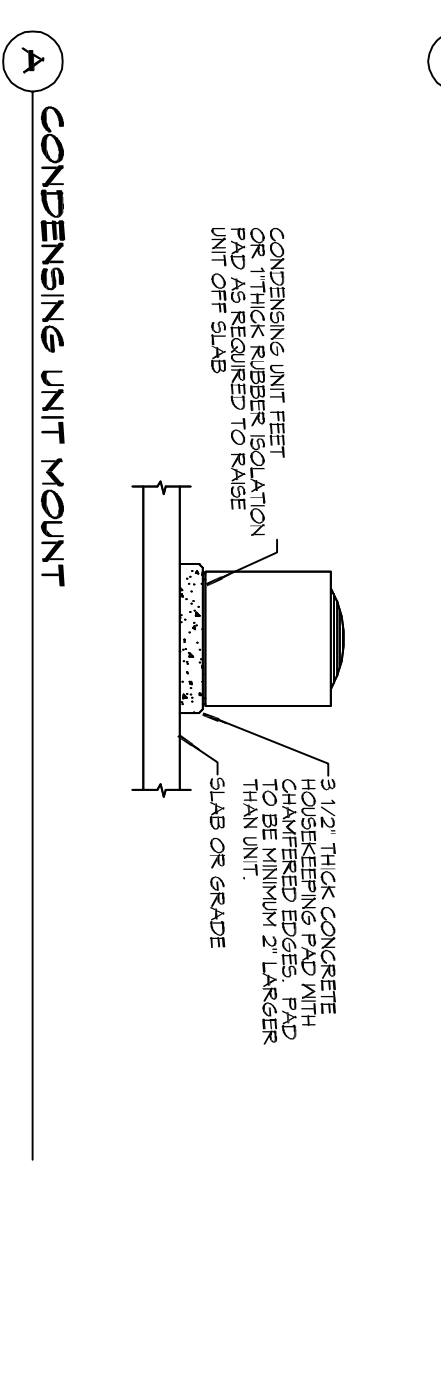
D SQUARE ELBOW DETAIL



C SUPPLY DUCT TAKE-OFF DETAIL



B DUCT SPLITTER DET



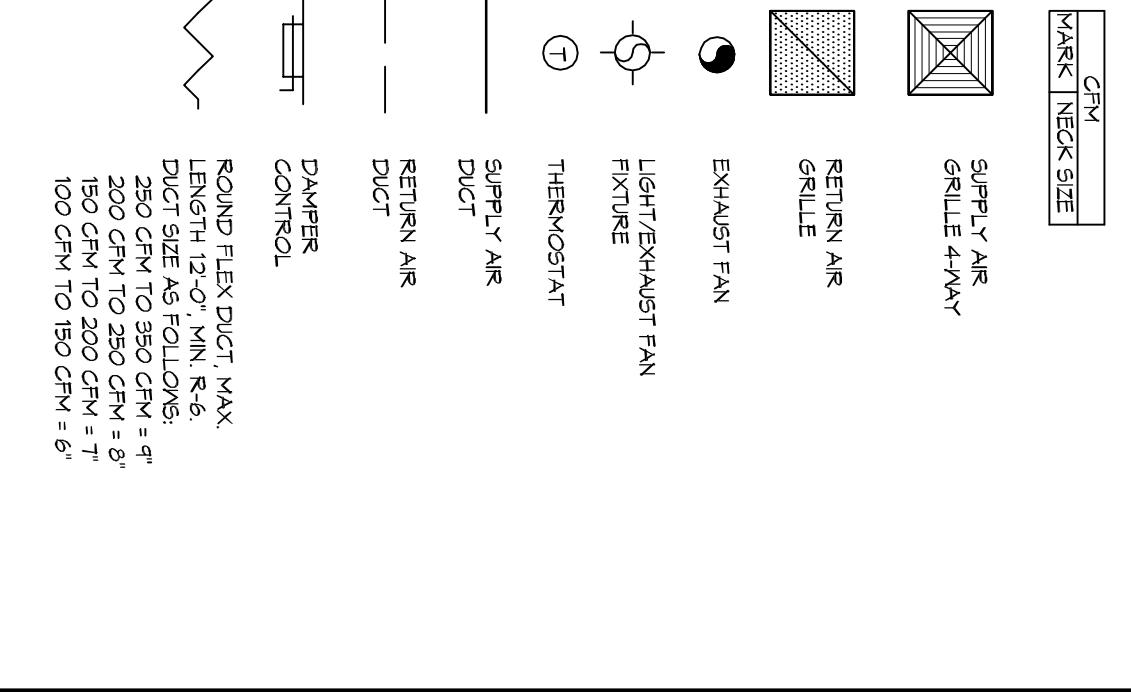
A CONDENSING UNIT MOUNT

18 DETAILS
SCALE: NTS

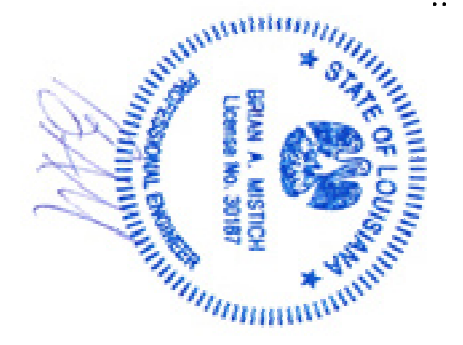
GENERAL HVAC NOTES

1. CONCEALED DUCTWORK TO BE GALVANIZED SHEET METAL, MEASURED WITH FIBERGLASS GLASS DUCT TAP WITH FSK VAPOR BARRIER, MIN R-6 INSTALLED PER SHADCON STANDARDS. DUCT WORK UNDEVELOPED DOWNSTREAM FROM RTU SHALL BE LINED FOR SOUND ATTENUATION.
2. EXPOSED DUCTWORK TO BE GALVANIZED SHEET METAL, LINED WITH FIBERGLASS GLASS DUCT LINER, MIN R-6, INSTALLED PER SHADCON STANDARDS.
3. ROUND FLEXIBLE DUCT TO BE UL-181, CLASS 1, AIR DUCT MATERIALS.
4. DUCT SIZES SHOWN ARE CLEAR INSIDE DIMENSIONS.
5. IN ALL SYSTEMS OVER 2000 CFM AND LESS THAN 15,000 CFM, SMOKE DETECTORS SHALL BE INSTALLED IN ACCORDANCE WITH NFPA 72E IN THE RETURN DUCT DOWNSTREAM OF THE AIR HANDLING UNIT AND ALL FILTERS TO AUTOMATICALLY STOP THE FAN.
6. PROVIDE UL LISTED 125 F° FRESH AIR RETURN AIR OF EACH SYSTEM UNDER 2000 CFM TO SHUT DOWN THE FAN IN THE EVENT OF FIRE.
7. PROVIDE UL RATED FIRE RATED ASSEMBLIES WHERE REQUIRED AT ALL DUCT PENETRATIONS OF FIRE RATED ASSEMBLIES AND WHERE REQUIRED BY CODE, INCLUDING OUTSIDE AIR INTAKES AND EXHAUST FANS.
8. CONDENSATE DRAINS TO BE PVC PIPE RUN TO PLUMBERS P-TAP WITHIN FIVE FEET OF AIR HANDLING UNITS.
9. ALL AIR HANDLING SYSTEMS TO BE BALANCED TO ASSURE PROPER AIR FLOWS PER PLANS.
10. ALL THERMOSTATS TO BE AUTOMATIC CHANGEOVER WITH HEAT SWITCH.
11. EXHAUST FAN SHALL BE CONTROLLED BY A SWITCH ON THE WALL IN THE SAME LOCATION AS LIGHT SWITCHES. PROVIDE BACK DRAHT DAMPER.
12. PROVIDE AND INSTALL WATER PROOF GRILLE VENT IN ROOFER ROOF LOCATION FOR PLUMBING EXHAUST.
13. ALL SUPPLY AIR VENTS SHALL BE EQUIPPED WITH AIR CONTROL DAMPERS AT THE REGISTER.
14. LOCATE OUTDOOR UNITS AS SHOWN ON ARCHITECTURAL DRAWINGS, REFRIGERANT LINES SHALL BE SIZED BY UNIT MANUFACTURER AND INSTALLED ACCORDING TO MANUFACTURER'S INSTRUCTIONS.
15. FRESH AIR SHALL BE SUPPLIED TO EACH AIR HANDLER THROUGH EXTERIOR WALL DUCT SUPPLIED WITH A CONTROL DAMPER.
16. ALL ELECTRICAL, MECHANICAL, AND PLUMBING PENETRATING FIRE WALLS SHALL BE FIRE CALKED / PENETRATIONS THROUGH RATED PENETRATIONS SHALL BE SEaled WITH A MATERIAL CAPABLE OF WITHSTANDING FIRE AND NOT GREASE WHEN TESTED IN ACCORDANCE WITH ASTM E-814.
17. ALL MECHANICAL SYMBOLS ARE DRAWN, DIMENSIONED, AND IDENTIFIED TO VERIFY WITH OWNER LOCATIONS OF VENTS, DAMPERS, REGISTER, ETC.
18. FLEXIBLE DUCTWORK LENGTH NOT TO EXCEED 12'-0".
19. REFER TO REELECTED CEILING PLAN FOR FAN GRILLE AND DIFFUSER LOCATIONS AND COORDINATE AS REQUIRED.
20. FINAL LOCATION OF TEMPERATURE CONTROLS TO BE COORDINATED WITH OWNER AT JOB SITE.
21. PROVIDE AND INSTALL SMOKE DETECTORS, AS APPROVED BY LOCAL AHJ'S, PLACE NEAR R/A AND S/A OPENINGS OF AHU AND PROVIDE WITH ACCESS PANEL, MARKING BY ELECTRICAL CONTRACTOR.
22. FRESH AIR INTAKES ARE REQUIRED TO HAVE NOTICED OR GRAVITY DAMPERS TO SHUT OFF WHEN SYSTEM IS NOT RUNNING.
23. PROVIDE BRD SCREENS AT ALL EXTERIOR MECHANICAL PENETRATIONS, FINISHED TING EITHER WALL MOUNTED OR FLOOR MOUNTED AGAINST PARTITIONS. REFER TO ARCHITECTURAL DRAWINGS.
24. SEE ROOF PLAN FOR ALL ROOF PENETRATIONS.
25. PROVIDE MIN. 16 GA GALVANIZED SHEET METAL TO BLANK-OFF GABLE VENTS WHERE MAKE/EXHAUST DUCTS OCCUR.

LEGEND



DAMMON ENGINEERING INC.
LOUISIANA & MISSISSIPPI
Chief Engineer: Brian Misch, PE
554 Old Spanish Trail
Slidell, LA 70458
www.dammonengineering.com
info@dammonengineering.com
PH: 985.649.5832



NEW OFFICE WAREHOUSE
ZEIGLER TREE COMPANY
LA HWY 1095 DEER CROSS DRIVE
MADISONVILLE, LA 70447
JOB No: 2389 DATE: 7-25-2019
DRAWN BY: CKD CHECKED BY: BAM

M101
DRAWING NUMBER:
SHEET NO. 1 OF 3