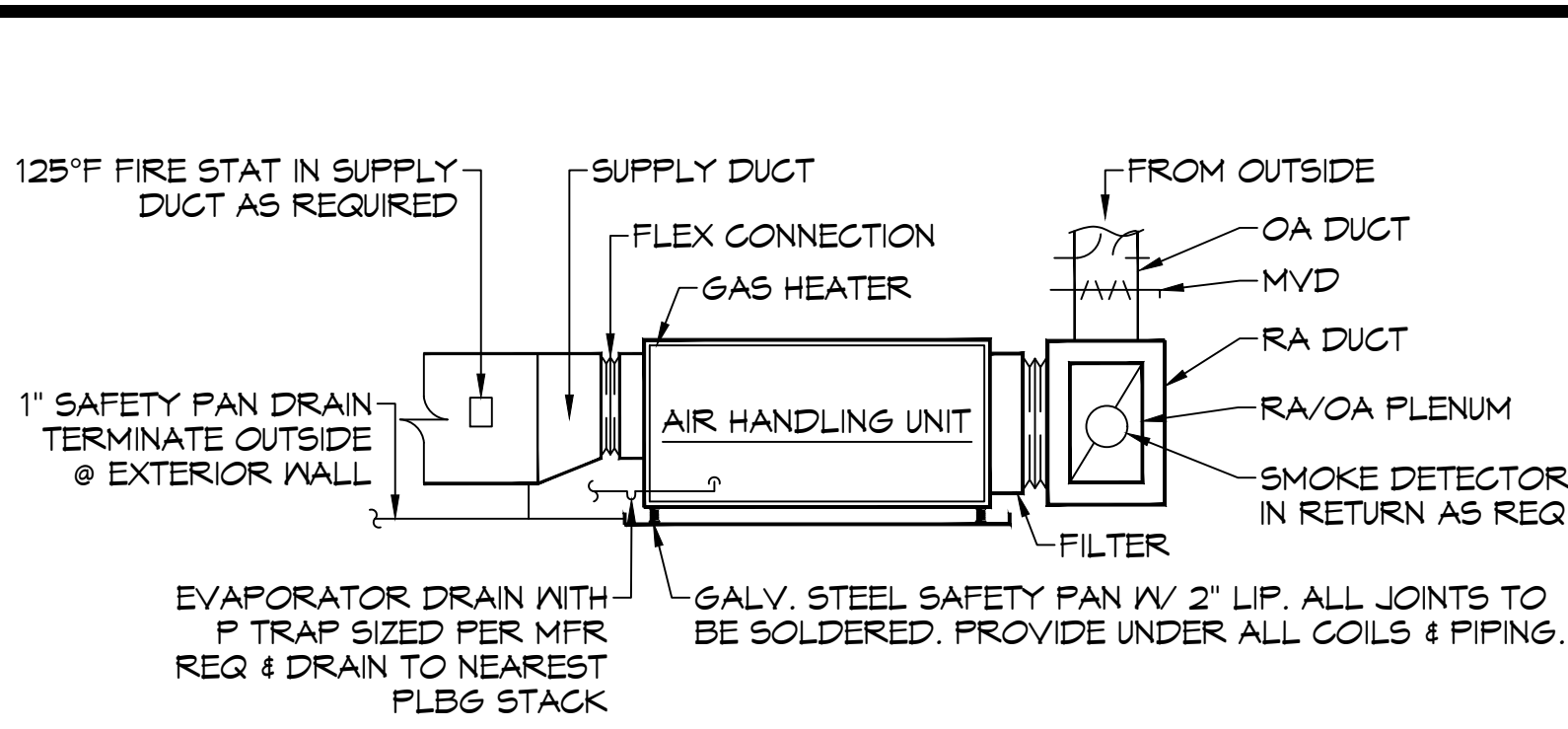
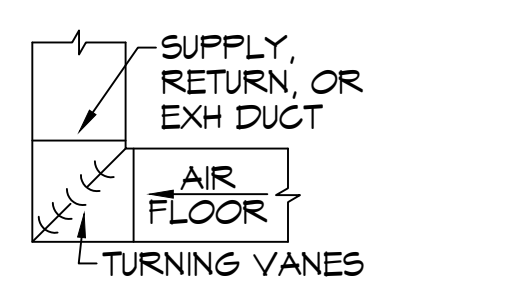


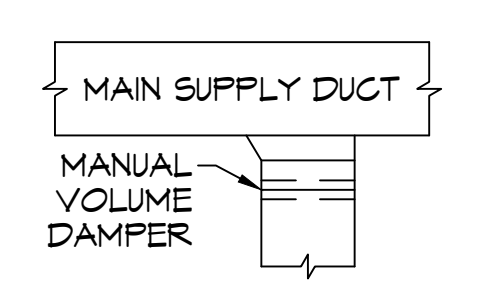
A DIFFUSER CONNECTION DETAIL - FLEX DUCT



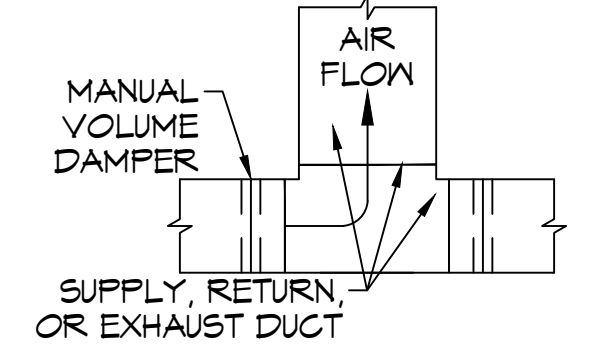
B TYPICAL HORIZONTAL AHU DETAIL



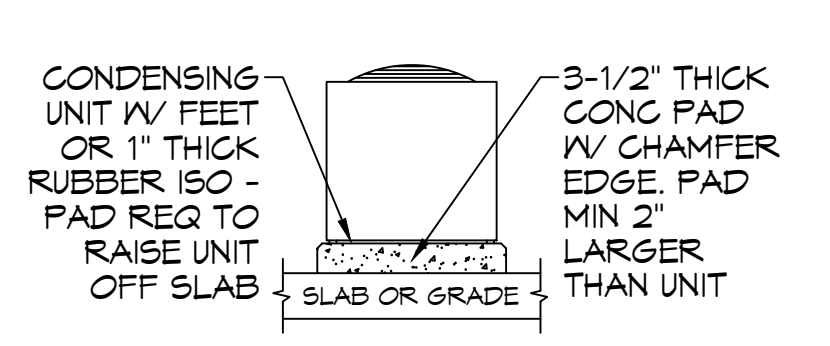
C SQUARE ELBOW



D SUPPLY DUCT TAKE-OFF



E DUCT SPLITTER



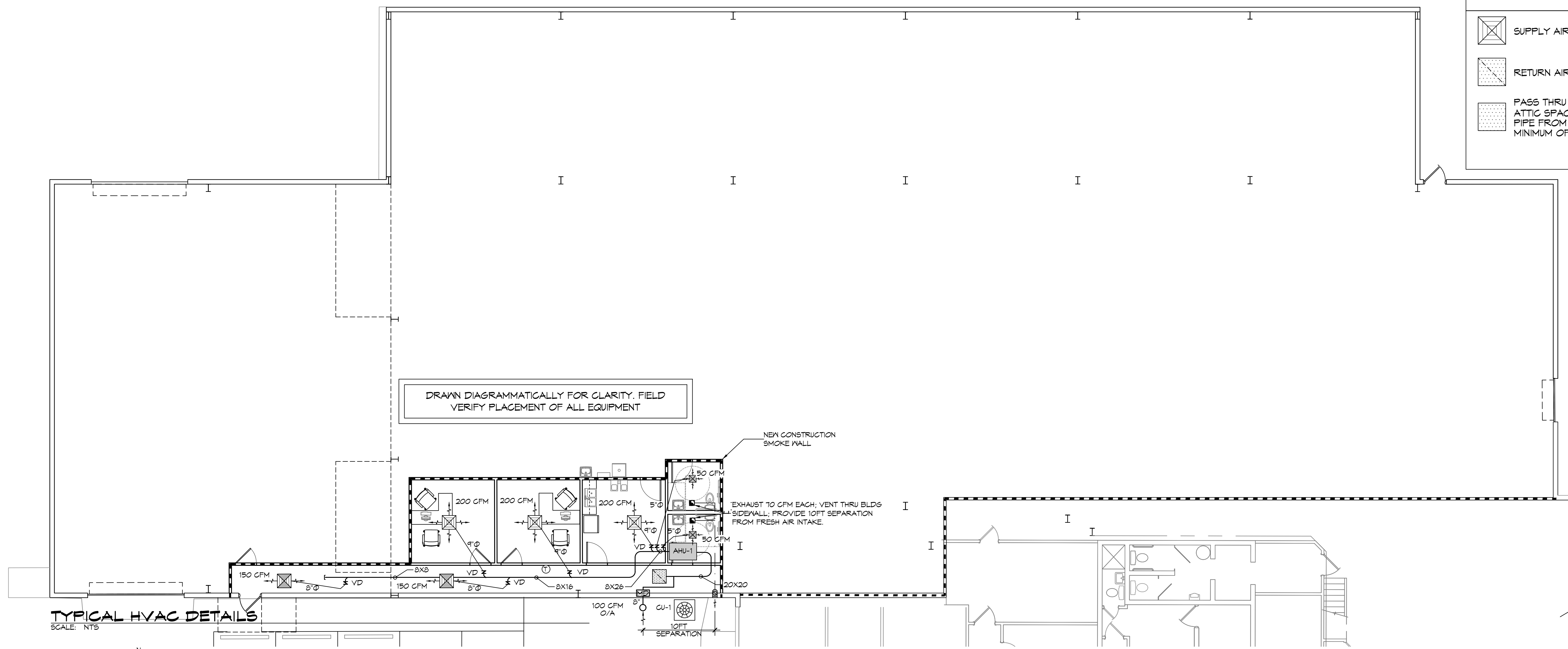
F CONDENSING UNIT MOUNT

12 TYPICAL HVAC DETAILS
SCALE: NTS

| SPLIT SYSTEMS SCHEDULE | | | | | | | | | | | | | | | |
|------------------------|-------|--------------|-----------|--------|-------------------|------------|-----------|-----|-----|-----------|--------|-------------|-----------|-----|-----|
| AIR HANDLER | | | | | | | | | | CONDENSER | | | | | |
| TAG | MAKE | NOMINAL TONS | TOTAL CFM | OA CFM | COOLING TOTAL MBH | HEATING KW | POWER | MCA | MOP | TAG | MAKE | NORMAL TONS | POWER | MCA | MOP |
| AHU-1 | TRANE | 2.5 | 1,000 | 100 | 30,000 | 7.2 | 208/11/60 | 41 | 50 | CU-1 | TRAN E | 2.5 | 208/11/60 | 15 | 25 |

MECHANICAL LEGEND

- SUPPLY AIR GRILLE
- RETURN AIR GRILLE
- PASS THRU GRILL; USED TO HEAT THE ATTIC SPACE. (TO KEEP SPRINKLER PIPE FROM FREEZING. INSTALL MINIMUM OF ONE.
- EXHAUST FAN
- T THERMOSTAT
- Z DAMPER CONTROL



11 MECHANICAL PLAN
SCALE: 1/8" = 1'-0"

- GENERAL NOTES**
- ALL WORK AND MATERIAL SHALL CONFORM STRICTLY TO THE LATEST LOCAL CITY, PARISH, STATE AND NATIONAL GOVERNING CODES. MUST MEET IMC 2021 REQUIREMENTS.
 - CONCEALED DUCTWORK TO BE GALVANIZED SHEET METAL WRAPPED WITH FIBROUS GLASS DUCT WRAP WITH FBK VAPOR BARRIER, MIN R-6. INSTALLED PER SMACNA STANDARDS. DUCT WORK IMMEDIATELY DOWNSTREAM FROM RTU SHALL BE LINED FOR SOUND ATTENUATION.
 - EXPOSED DUCTWORK TO BE GALVANIZED SHEET METAL LINED WITH FIBROUS GLASS DUCT LINER, MIN R-6. INSTALLED PER SMACNA STANDARDS.
 - ROUND FLEXIBLE DUCT TO BE UL-181, CLASS 1, AIR DUCT MATERIALS.
 - DUCT SIZES SHOWN ARE CLEAR INSIDE DIMENSIONS.
 - IN ALL SYSTEMS OVER 2000 CFM AND LESS THAN 15,000 CFM, SMOKE DETECTORS SHALL BE INSTALLED IN ACCORDANCE WITH NFPA 72E IN THE RETURN DUCT DOWNSTREAM OF THE AIR HANDLING UNIT AND ALL FILTERS TO AUTOMATICALLY STOP THE FAN.
 - PROVIDE UL LISTED 125°F FIRESTAT IN RETURN AIR OF EACH SYSTEM UNDER 2000 CFM TO SHUT DOWN THE FAN IN THE EVENT OF FIRE.
 - PROVIDE UL RATED FIRE DAMPERS WHERE REQUIRED AT ALL DUCT PENETRATIONS OF FIRE-RATED ASSEMBLIES AND WHERE REQUIRED BY CODE, INCLUDING OUTSIDE AIR INTAKES AND EXHAUST FANS.
 - CONDENSATE DRAINS TO BE PVC PIPE RUN TO PLUMBERS P-TRAP WITHIN FIVE FEET OF AIR HANDLING UNITS.
 - ALL AIR HANDLING SYSTEMS TO BE BALANCED TO ASSURE PROPER AIR FLOWS PER PLANS.
 - ALL THERMOSTATS TO BE AUTOMATIC CHANGEOVER WITH HEAT SWITCH.
 - EXHAUST FAN SHALL BE CONTROLLED BY A SWITCH ON THE WALL IN THE SAME LOCATION AS LIGHT SWITCH(S). PROVIDE BACK DRAFT DAMPER.
 - PROVIDE AND INSTALL WATER PROOF GRILLE VENT IN PROPER ROOF LOCATION FOR PLUMBING FIXTURE EXHAUST.
 - ALL SUPPLY AIR VENTS SHALL BE EQUIPPED WITH AIR CONTROL DAMPERS AT THE REGISTER.
 - LOCATE OUTDOOR UNITS AS SHOWN ON ARCHITECTURAL DRAWINGS.
 - REFRIGERANT LINES SHALL BE SIZED BY UNIT MANUFACTURER AND INSTALLED ACCORDING TO MANUFACTURER'S INSTRUCTIONS.
 - FRESH AIR SHALL BE SUPPLIED TO EACH AIR HANDLER THROUGH EXTERIOR WALL DUCT SUPPLIED WITH A CONTROL DAMPER.
 - ALL ELECTRICAL, MECHANICAL, AND PLUMBING PENETRATING FIRE WALLS SHALL BE FIRE CAULKED. (PENETRATIONS THROUGH RATED CONSTRUCTION SHALL BE SEALED WITH A MATERIAL CAPABLE OF PREVENTING THE PASSAGE OF FLAMES AND HOT GASES WHEN TESTED IN ACCORDANCE WITH ASTM-E8-14).
 - ALL MECHANICAL SYMBOLS ARE DRAWN DIAGRAMMATICALLY. CONTRACTOR TO VERIFY WITH OWNER LOCATIONS OF VENTS, DAMPERS, REGISTERS, ETC.
 - FINAL LOCATION OF TEMPERATURE CONTROLS TO BE COORDINATED WITH OWNER AT JOB SITE.
 - PROVIDE AND INSTALL SMOKE DETECTORS AS APPROVED BY LOCAL A.H.J.S. PLACE NEAR R/A AND S/A OPENINGS OF AHU AND PROVIDE, WITH ACCESS PANEL. WIRING BY ELECTRICAL CONTRACTOR.

DAMMON ENGINEERING, INC.
554 Old Spanish Trail, Suite 111, Slidell, LA 70458
(888) 649-5832
www.dammonengineering.com
info@dammonengineering.com
PH: 985-649-5832

Chief Engineer: Brian Mestich, PE
554 Old Spanish Trail, Suite 111, Slidell, LA 70458

| REVISIONS | DATE | DESCRIPTION |
|-----------|------|-------------|
| | | |
| | | |
| | | |
| | | |

SEAL:

OFFICE BUILD-OUT INSIDE WAREHOUSE
CARPENTRIES, L.L.C.
646 CARNATION ST
SLIDELL, LA

JOB No: 2474 DATE: 9/29/2023
DRAWN BY: TNT CHECKED BY: DFD

SHEET TITLE: MECHANICAL PLAN
DRAWING NUMBER: M101
SHEET No: 6 of 8