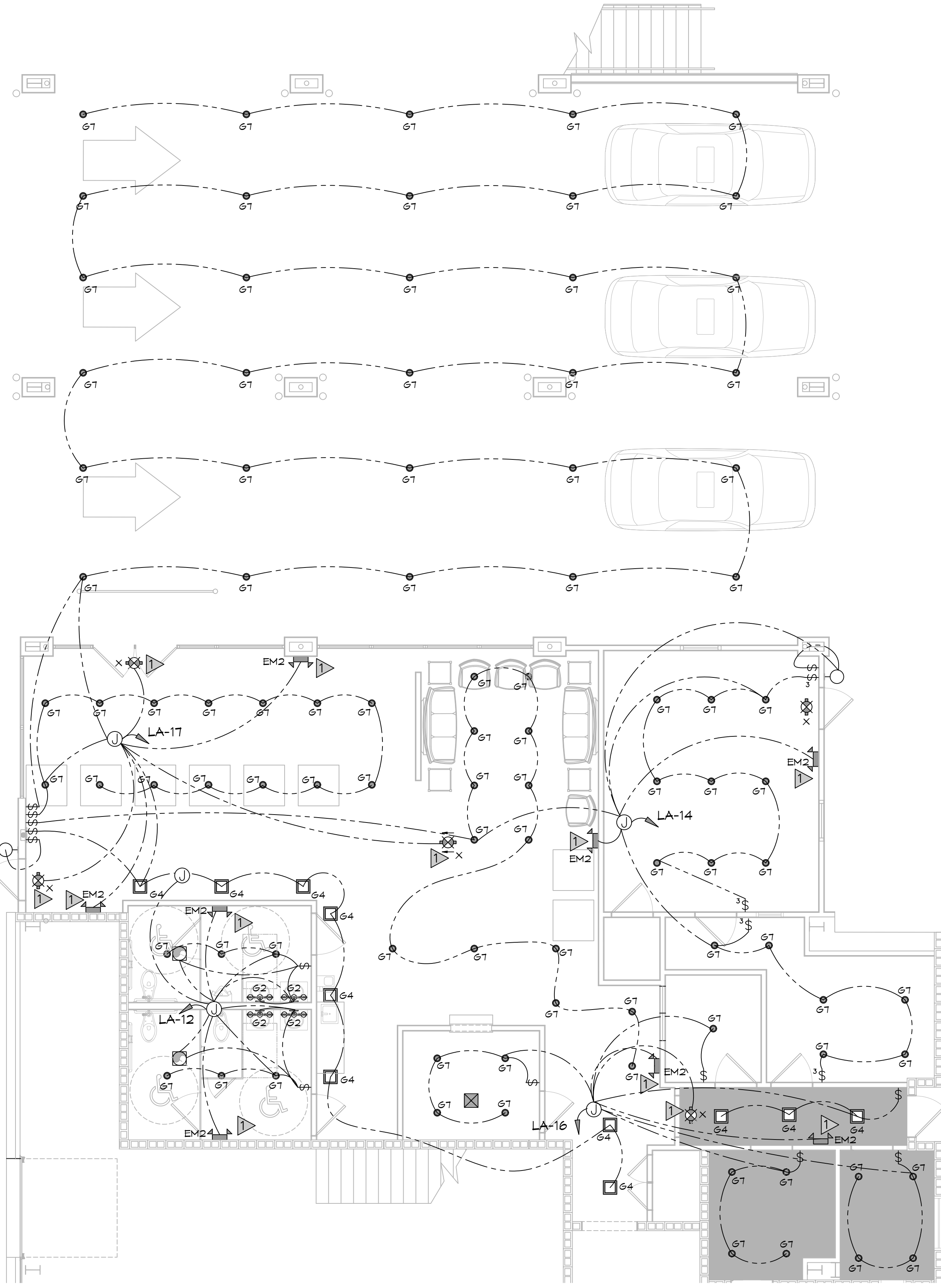
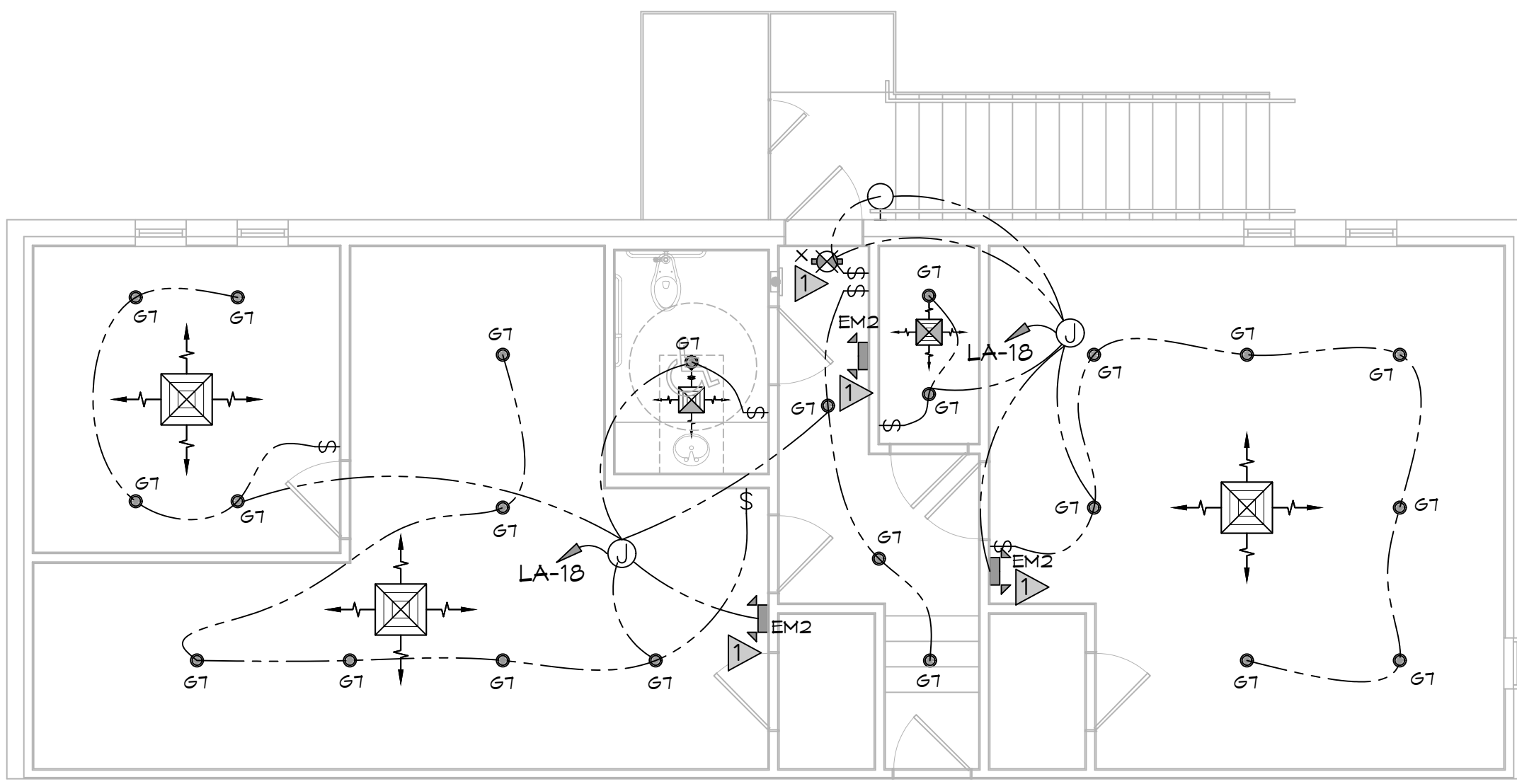


FILE NAME: A:_Office\Bismillah\377 - Legacy Buick GMC Slidell - Electrical Lighting Schedule - Electrical Lighting Schedule.dwg DATE: 8/25/2024 10:23:05 AM



37 LIGHTING PLAN
SCALE: 3/16"=1'-0"

FIRST FLOOR



38 LIGHTING PLAN
SCALE: 3/16"=1'-0"

SECOND FLOOR

LIGHTING FIXTURE SCHEDULE				
NO.	LOCATION	STYLE	MANUFACTURER	PART
G2	CUSTOMER RESTROOMS	DIRECT SPOT	RSA LIGHTING	G2N0T0T6ME(VOLT) TGAB
G4	HALL	12" SQUARE SURFACE MOUNT LED	FLL LIGHTING	GFS01T
G7	CUSTOMER LOUNGE & SERVICE AREA	DOWN LIGHT, 6" RECESSED CAN	HALO	HT50TGPDO10MLT12 840TUNVDO1049BHS 06
EM2	OFFICE, BATHROOMS, CUSTOMER AREAS	SURFACE EMERGENCY LIGHT	SURE-LITES	CC3
X	EXIT LIGHTS AT EXITS	EXIT LIGHTS	SURE-LITES	EJ5TOR

GENERAL LIGHTING NOTES

- ALL WORK SHALL COMPLY WITH APPLICABLE NATIONAL, STATE, AND LOCAL CODES, RULES, REGULATIONS, AND REQUIREMENTS OF THE SERVICE UTILITY COMPANY.
- GENERAL CONTRACTOR SHALL NOTIFY THE ARCHITECT IMMEDIATELY IF ANY CONFLICTS OCCUR BETWEEN LIGHTING AND ANY OTHER TRADE. DO NOT PROCEED WITH INSTALLATION IN THAT AREA UNTIL CONFLICT HAS BEEN RESOLVED TO THE SATISFACTION OF THE ARCHITECT AND ENGINEER.
- REFER TO ARCHITECTURAL DRAWINGS FOR EXACT LOCATION AND MOUNTING INSTRUCTIONS FOR ALL LIGHT FIXTURES. NOTIFY THE ARCHITECT AND ENGINEER OF ANY DISCREPANCIES BETWEEN THESE PLANS AND THE ARCHITECTURAL PLANS RELATING TO QUANTITY, TYPE AND LOCATION OF DEVICES AND/OR FIXTURES.
- WHEN SPECIFIC LIGHT FIXTURE HAS BEEN SPECIFIED IN THE FIXTURE SCHEDULE, ELECTRICAL CONTRACTOR SHALL PROVIDE COMPLETE ASSEMBLY INCLUSIVE ALL PARTS AND HARDWARE TO INSURE PROPER FUNCTIONING FIXTURE.
- ALL CONDUCTORS SHALL BE A MINIMUM OF #12 AWG UNLESS NOTED OTHERWISE.
- ALL 120V RUNS LONGER THAN 60 FEET SHALL BE #10 AWG AND 277V RUNS LONGER THAN 150 FEET SHALL BE #10 AWG UNLESS NOTED OTHERWISE.
- ALL CONDUCTORS SHALL BE COPPER.
- WHERE CONDUCTOR SIZES ARE NOTED ON DRAWINGS, THAT WIRE SIZE SHALL BE THROUGH THE ENTIRE RUN UNLESS OTHERWISE NOTED.
- MOUNTED LIGHT SWITCHES 48" AFF UNLESS NOTED OTHERWISE ON ARCHITECTURAL DRAWINGS.
- WHERE MORE THAN ONE SWITCH OCCURS IN THE SAME LOCATION, THEY SHALL BE INSTALLED IN A GANG TYPE BOX UNDER ONE COVER PLATE. ALL GANGED SWITCHES SHALL HAVE A COMMON SEAMLESS FACEPLATE. EACH MULTI-GANGED BOX SHALL BE NO MORE THAN SIX (6) SWITCHES WIDE. WHERE MORE THAN SIX (6) SWITCHES ARE SHOWN AT ONE (1) LOCATION, ADDITIONAL MULTI-GANGED BOXES SHALL BE STACKED VERTICALLY AND THE WIDTH OF THE MULTI-GANGS SHALL BE AS EVEN AS POSSIBLE.
- MINIMUM CONDUCTOR SIZE SHALL BE #12, 600V INSULATION. MINIMUM SIZE CONDUIT SHALL BE 3/4" ELECTRICAL METALLIC TUBING (EMT) FOR INTERIOR USE, 3/4" RIGID ALUMINUM FOR EXTERIOR USE ABOVE GRADE AND 1" SCHEDULE 40 PVC, BURIED A MINIMUM OF 18" FOR NON-VEHICULAR TRAFFIC AREAS. FOR CONDUITS BELOW GRADE, EMT SHALL BE USED WITH METAL STUD CONSTRUCTION AND ALL ASSEMBLY OCCUPANCIES. INTERIOR FITTINGS SHALL BE CAST WHERE EXPOSED ON WALLS, AND EXTERIOR FITTINGS SHALL BE CAST BOXES WITH NEMA 3R COVER(S).
- DROP/SUSPENDED CEILINGS - ALL WIRING ABOVE DROP/SUSPENDED CEILINGS SHALL BE PROTECTED FROM PHYSICAL DAMAGE WITH EMT, IN METAL STUD CONSTRUCTION, OR SCHEDULE 40 PVC, IN WOOD FRAME CONSTRUCTION. 6 FT LENGTH OF MC CABLE FOR EQUIPMENT WHIP(S) IS ALLOWED ABOVE DROPPED CEILING FROM A J-BOX TO LIGHT FIXTURES.
- EACH DIMMER SWITCH SHALL HAVE A WATTAGE RATING 25% HIGHER THAN THE TOTAL WATTAGE OF ALL LIGHTS TO BE CONTROLLED BY THE DIMMER. DIMMER SIZES 600, 1000, 1500, AND 2000 WATTS, LUTRON NOVA T-STAR. WHERE SWITCHES ARE GANGED WITH DIMMERS, THE SWITCHES SHALL ALSO BE LUTRON NOVA T-STAR. FLUORESCENT AND LOW VOLTAGE DIMMERS SHALL BE LUTRON NOVA T-STAR.
- ALL EMERGENCY EXIT LIGHT FIXTURES SHALL HAVE 90 MINUTE BATTERY BACKUP WITH INTEGRAL TEST BUTTON AND SHALL BURN CONTINUOUSLY.
- ALL FLUORESCENT FIXTURES THAT UTILIZE DOUBLE-ENDED LAMPS AND CONTAIN BALLASTS SHALL BE PROVIDED WITH A DISCONNECTING MEANS IN ACCORDANCE WITH NEC 410.736.

LIGHTING LEGEND

- RECESSED LIGHT FIXTURE
- EXTERIOR LIGHT FIXTURE W/90 MIN BACKUP
- ⊗ CEILING MOUNTED EXIT SIGN W/90 MIN BACKUP
- ⬆ WALL MOUNTED EMERGENCY LIGHT W/90 MIN BACKUP
- \$ SINGLE POLE LIGHT SWITCH
- 3\$ 3-WAY LIGHT SWITCH

LIGHTING KEY NOTES

- ▶ PROVIDE CONNECTION TO UN-SWITCHED HOT OF LIGHTING CIRCUIT AND SHALL HAVE 90 MINUTE EMERGENCY BATTERY BACKUP

DAMMON ENGINEERING, INC.
LOUISIANA & MISSISSIPPI

Chief Engineer: Brian Mistich, PE
554 Old Spanish Trail
Slidell, LA 70458
www.dammonengineering.com
info@dammonengineering.com
PH: 985.649.5832

REVISIONS	DATE	DESCRIPTION



NEW SERVICE AREA
LEGACY BUICK GMC SLIDELL

2477 DATE: 02/15/2024
JOB No: 2477
DRAWN BY: TMT
CHECKED BY: GCP

SHEET TITLE:
FIRST FLOOR
SECOND FLOOR
LIGHTING PLAN

DRAWING NUMBER:
E102

SHEET No: 17 of 18