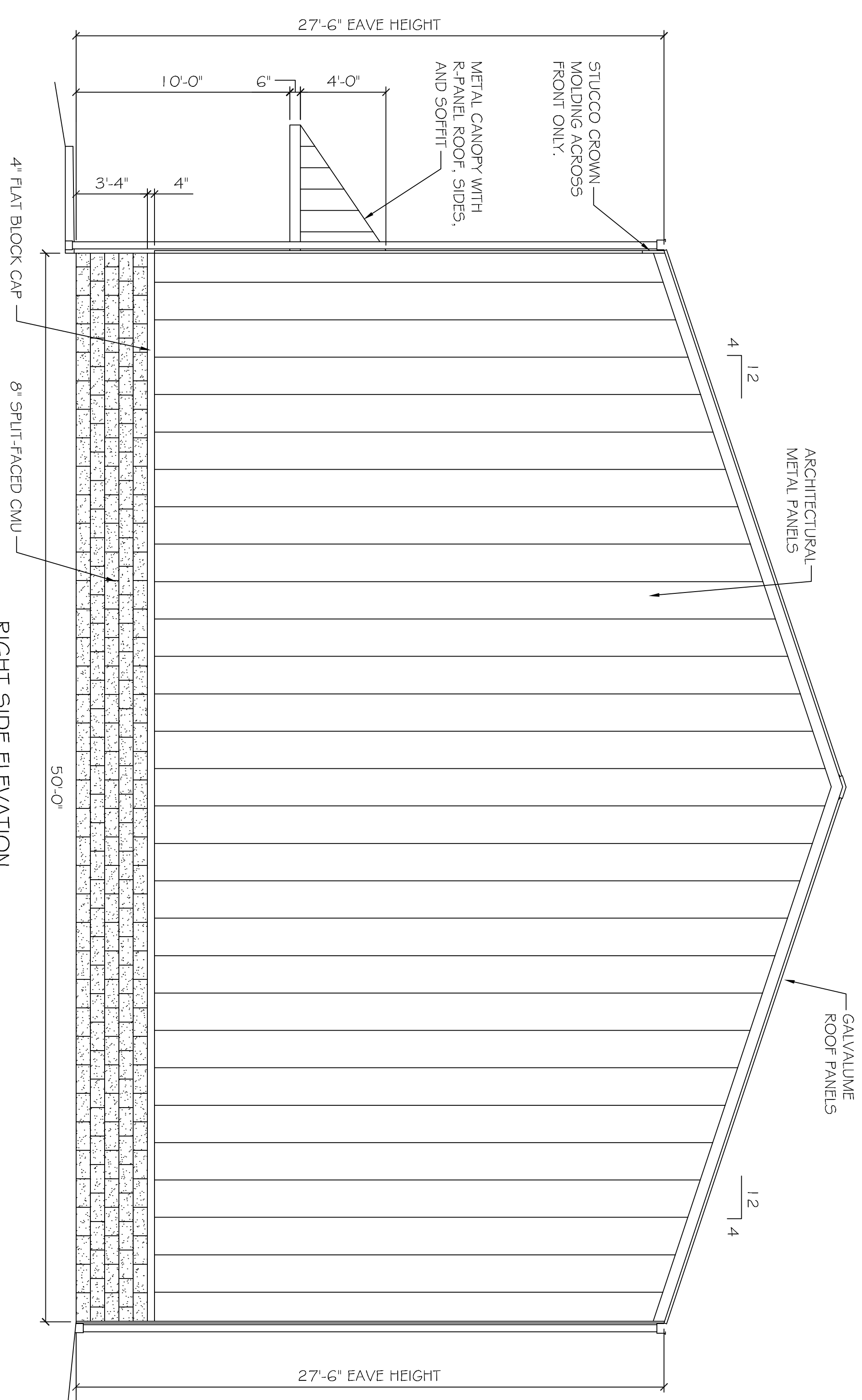


FRONT ELEVATION  
SCALE: 1/4" = 1'-0"



RIGHT SIDE ELEVATION  
SCALE: 1/4" = 1'-0"

REVISIONS		
#	DESCRIPTION	DATE

**BULK SYSTEM'S NEW OFFICE/WAREHOUSE BUILDING**  
 1226 FREMEXIX AVENUE  
 SLIDELL, LOUISIANA 70458

JOB No: 2173      DATE: 04-23-2013  
 DRAWN BY: JTL      CHECKED BY:

**DAMMON**  
ENGINEERING, INC.  
*Architects & Engineers*

The above drawings and specifications, design and arrangements represent the property of Dammon Engineering, Inc. and shall remain the property of Dammon Engineering, Inc. and no part thereof shall be copied, altered, or used in connection with any work or project other than the specific project for which they have been prepared and distributed without written consent of Dammon Engineering, Inc. All drawings and specifications shall constitute a contract and shall be subject to the terms and conditions of the contract.

CHIEF ENGINEER, EMMETT DAMMON, P.E.  
 CHIEF ARCHITECT, KEVIN KINCHEN  
 554 OLD SPANISH TRAIL  
 SLIDELL, LA 70458

dammoneng@bellsouth.net  
 PHONE: 985-649-5832  
 FAX: 985-641-5950

EXTERIOR ELEVATIONS

SHEET No: 11 OF 20

A3