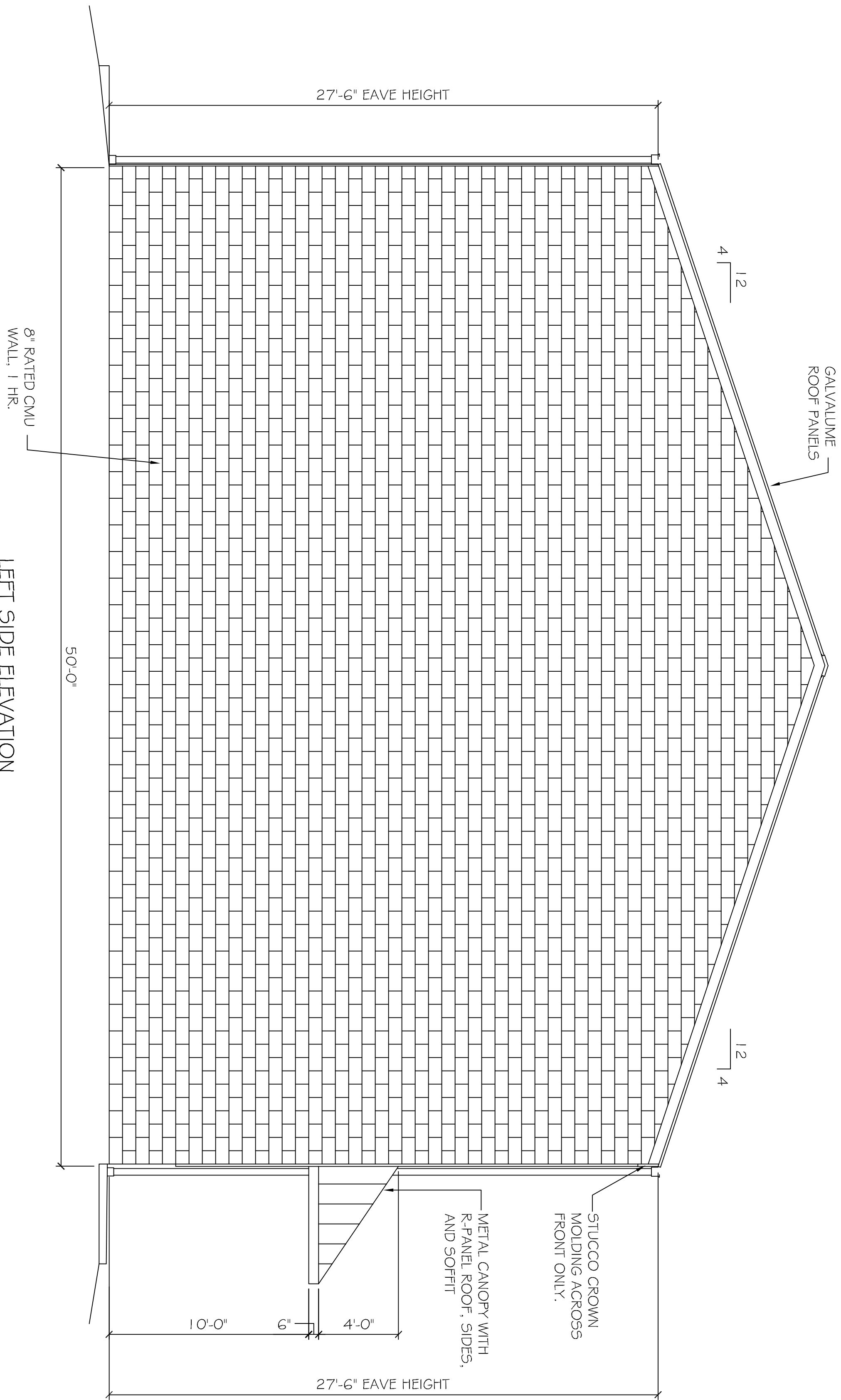


REAR ELEVATION
SCALE: 1/4" = 1'-0"



LEFT SIDE ELEVATION
SCALE: 1/4" = 1'-0"

REVISIONS		
#	DESCRIPTION	DATE

BULK SYSTEM'S NEW OFFICE/WAREHOUSE BUILDING
 1226 FREMEXLN AVENUE
 SLIDELL, LOUISIANA 70458

JOB No: 2173 DATE: 04-23-2013
 DRAWN BY: JTL CHECKED BY:

DAMMON
ENGINEERING, INC.
Architects & Engineers

The above drawings and specifications, design and arrangements represented hereby are and shall remain the property of Dammon Engineering, and no part thereof shall be copied, exhibited to others, or used in connection with any work or project other than the specific project for which they have been prepared and approved without written consent of Dammon Engineering. Visual contact with these drawings or specifications shall constitute conclusive evidence of acceptance of these restrictions.

CHIEF ENGINEER, EMMETT DAMMON, P.E.
 CHIEF ARCHITECT, KEVIN KINCHEN
 554 OLD SPANISH TRAIL
 SLIDELL, LA 70458
 dammonengr.com
 dammoneng@bellsouth.net
 PHONE: 985-649-5832
 FAX: 985-641-5950

EXTERIOR ELEVATIONS

SHEET No: 12 OF 20

A4